

Table of Contents

INTRODUCTION TO GEORGE MASON UNIVERSITY

Overview	3
Mission Statement.....	3
1996-97 Facts and Figures Summary.....	4-5
Highlights of George Mason University's History	6-7
Virginia Higher Education	7
State Council of Higher Education for Virginia	8
Board of Visitors.....	8
University Administration, January 1997	9
Administrative Organization of George Mason University	10

STUDENT ENROLLMENT INFORMATION

A Note About Definitions	11
Admissions/New Enrollees Information	12-16
Overall Student Enrollment Information	17-27
Student Financial Aid	28-29
Student Housing.....	30
Hourly Classroom Population.....	30

ACADEMIC PROGRAM INFORMATION

University and Program Accreditation	31
Academic Deans, Directors and Department Chairs.....	32
Degree Programs Offered, CIP Code and Year Initiated	33-36
Degrees Conferred	37-43

FACULTY AND STAFF

Job Classification	45
Demographic Information.....	46
Faculty by Years of Service	47
Faculty Salaries	48
Faculty Rank and Tenure Status	49-50
Distinguished Faculty	51-53
SCHEV Peer List for George Mason University	53

BUDGET AND FINANCE

Overview	55
Educational and General Fund.....	56-58
Auxiliary Enterprises Fund.....	59-61
Student Tuition and Fees.....	62
Campus Buildings by First Year of Occupancy.....	63
Net Assignable Square Footage by Fund.....	64

RESEARCH, SERVICE AND DEVELOPMENT

Overview	65-67
University Development	68
Library Resources	69

GLOSSARY OF TERMS

Admissions, Student Enrollment and Academic Program Data	71-73
Definitions for Faculty and Staff	74

APPENDIX

Contributing Data Sources	75
Glimpse of Student Enrollment.....	76
Glimpse of Course Enrollment	77

table of contents

List of Tables

INTRODUCTION TO GEORGE MASON UNIVERSITY

1.1 Public Four-Year Colleges and Universities in Virginia	7
--	---

STUDENT ENROLLMENT INFORMATION

2.1 University Admissions Summary—Fall 1996	12
2.2 New Enrollees by Academic Division—Fall 1996	13
2.3 Demographic Characteristics of New Enrollees—Fall 1996	14
2.4 Residency Status of New Enrollees—Fall 1996	15
2.5 Undergraduate Transfers from Virginia Institutions	15
2.6 New Enrollees by Location of Last Institution Attended—Fall 1996	16
2.7 Trends in Student Demographics	17
2.8 Student Demographics by Academic Division—Fall 1996	18
2.9 Undergraduate Student Enrollment by Academic Division—Fall 1996	19
2.10 Graduate Student Enrollment by Academic Division—Fall 1996	20
2.11 Law School Enrollment—Fall 1996	20
2.12 Student Enrollment by Division, Department and Degree—Fall 1996	21
2.13 Enrolled International Students by Country of Origin—Fall 1996	27
2.14 Student Financial Aid by Type of Award, AY 94-95 through 96-97	28
2.15 Students in Housing by Admissions Status, Level, Origin—Fall 1996	30
2.16 Hourly Classroom Population—Fall 1996	30

ACADEMIC PROGRAM INFORMATION

3.1 Academic Program Accreditation	31
3.2 Academic Deans, Directors and Department Chairs	32
3.3 Degree Programs Offered, CIP Code and Year Initiated	33
3.4 Degrees and Certificates Conferred by Academic Division	37
3.5 Degrees Conferred in Academic Year 1995-96	38

FACULTY AND STAFF

4.1 Total University Personnel by Job Classification	45
4.2 University Personnel FTE and Headcount by Gender and Mean Age	46
4.3 Ethnic Distribution of University Personnel	46
4.4 Full-time Instructional Faculty Age and Years of Service, by Rank	47
4.5 Full-time Instructional Faculty Salary	48
4.6 Full-time Faculty by Division/Department/Rank/Tenure Status/Type	49
4.7 Distinguished Faculty, Academic Year 1996-97	51
4.8 SCHEV Peer List for George Mason University	53

BUDGET AND FINANCE

5.1 E&G Expenditures by Program Area	56
5.2 E&G Fund Revenues by Source	57
5.3 1996-97 E&G Base Budget Summary by Major Unit	58
5.4 Auxiliary Enterprises Fund—Budgeted Revenues/Expenditures	59
5.5 Tuition and Fees Rates of Full-time Students	62
5.6 Campus Buildings by First Year of Occupancy	63
5.7 Net Assignable Square Footage by Fund	64

RESEARCH, SERVICE AND DEVELOPMENT

6.1 Sponsored Program Activity, Proposals Developed/Funded/Active	65
6.2 Sponsored Programs Expenditures by Department	66
6.3 Library Statistics	69

Introduction to George Mason University

OVERVIEW

With the nation's capital nearby, George Mason University is in the mainstream of the political, artistic, and professional life of the country. A young, vigorous institution building toward the future, George Mason University has acquired a national reputation for innovation, yet it is rooted in the academic traditions of Virginia.

The university's reputation for innovation results from its intent to be a world-class university built on a regional base. George Mason is committed to meeting the needs of a highly sophisticated Northern Virginia community often characterized as a prototype of the high-tech, information/service-based economy of a post-industrial, knowledge-driven era.

Rooted in the past, but understanding the needs of the region and the future development of the commonwealth, George Mason is poised to meet the challenges of the approaching new century. The university is exploring new approaches to a variety of needs: new curricula for undergraduates, new advanced degrees supportive of the Information Age, new openings on the cutting edge of telecommunications, new arrangements between the corporate world and higher education, new ways to serve the region's network of urban centers, and new cooperative arrangements with state government agencies and the private sector.

George Mason continues to explore innovations that will enable its students to be full citizens in a new century. The university realizes that aspects of the future are currently unknown and strives to position itself to meet unanticipated needs quickly when the opportunity arises. George Mason is committed to assuring that each new program undertaken to serve those needs will meet the university standard of excellence—a world-class teaching and research faculty for a region that demands and deserves the best.

This introductory section provides a summative view of the institution, as well as some contextual information on the region and the state it serves.

MISSION STATEMENT

George Mason University will be an institution of international academic reputation providing superior education enabling students to develop critical, analytical, and imaginative thinking and to make well-founded ethical decisions. The university will respond to the call for interdisciplinary research and teaching not simply by adding programs, but by rethinking the traditional structure of the academy.

The university will prepare students to address the complex issues facing them in society and to discover meaning in their own lives. George Mason will encourage diversity in its student body and will meet the needs of students by providing undergraduate, graduate, and professional courses of study that are interdisciplinary and innovative. The university will energetically seek ways to interact with and serve the needs of the student body.

The university will nurture and support a faculty that is diverse, innovative, and excellent in teaching, active in pure and applied research, and responsive to the needs of students and the community. The faculty will embody the university's interactive approach to change both in the academy and in the world.

The university will be a resource of the commonwealth of Virginia serving private and public sectors and will be an intellectual and cultural nexus between Northern Virginia, the nation, and the world.

—Approved by Board of Visitors in January 1995

introduction

1996-97 FACTS AND FIGURES SUMMARY

History	1957	George Mason University founded as a two-year branch of the University of Virginia.
	1964	The Fairfax Campus opened.
	1966	Virginia General Assembly authorized the college to become a four-year, degree-granting institution.
	1972	George Mason University established as a separate public institution by the commonwealth of Virginia on April 17.
	1979	George Mason University established the School of Law at the Arlington Campus and received doctoral status approval.
Campus Size	Fairfax Campus	677 acres
	Arlington Campus	5.2 acres
	Prince William Campus	120 acres
Academic Divisions	College of Arts and Sciences	
	College of Nursing and Health Science	
	Graduate School of Education	
	Institute of Graduate and Professional Business Studies	
	Institute for Computational Sciences and Informatics	
	Institute for Conflict Analysis and Resolution	
	Institute of the Arts	
	International Institute	
	Molecular Bioscience Technology Institute	
	National Center for Community College Education	
	New Century College	
	School of Business Administration	
School of Information Technology and Engineering		
School of Law		
The Institute of Public Policy		
Degree Programs Offered	Undergraduate	55
	Graduate	54 (Master's-41; Doctoral-13)
	Professional (Law)	1
	Total	110
Total Operating Budget	\$243.5 million	
Buildings	Academic/Administration Facilities	55
	Student Unions/Sports and Recreation Facilities	6
	Student Housing	64
	Total	125
Buildings Under Construction	Krasnow Institute for Advanced Study: Cost: \$4,000,000; Square Feet: 30,000	
Buildings Planned	Arlington Campus (Phase 1): Cost: \$18,000,000; Square Feet: 230,000	
	Prince William Campus: Cost: \$16,000,000; Square Feet: 100,000	
	Swimming Pool-Fairfax Campus: Cost: \$10,006,000; Square Feet: 66,000	

Facilities Open to the Public

George W. Johnson Center: The Center is eight acres of floor space housing a 25,000-volume book collection, media center, computer labs, bank, bookstore, convenience store, and food services. New Century College classes meet there, and specially outfitted spaces provide opportunities for film, dance, meetings and private study.

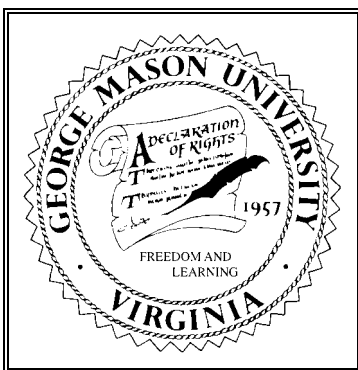
Center for the Arts: The complex includes a 2,000-seat Concert Hall, two experimental theaters, three dance studios, and music and fine arts studios.

Patriot Center: A 10,000-seat sports and entertainment arena designed for basketball, concerts, other sports and entertainment.

Sports and Recreation Complex: The complex features 115,000 square feet indoors, including 200-meter track, six basketball courts, seven tennis courts, seven volleyball courts, a baseball and softball field, eight handball/racquetball courts, locker rooms, a weight room, and saunas. A 400-meter outdoor track, soccer field, baseball diamond, and other athletic fields complete the amenities.

Fall 1996 Enrollment	Undergraduate Degree Seeking	13,292
	Graduate Degree Seeking	
	Master's	5,824
	Doctoral	1,254
	Professional (Law)	691
	Extended Studies	
	Undergraduate	539
	Graduate	2,768
	Total Enrollment	24,368
	Full-time Enrollment	11,959 (49.1%)
	Part-time Enrollment	12,409 (50.9%)
	In-State Students	21,342 (87.5%)
	Out-of-State Students	3,026 (12.5%)
	African American	1,851 (7.6%)
	Asian American	2,812 (11.5%)
	Hispanic	1,143 (4.7%)
	Native American	86 (0.4%)
	Non-Resident Alien	1,071 (4.4%)
1996 Freshman Class	First-time Freshman	1,953
1996-97 Tuition and Fees	In-State Students	\$4,248/yr—\$177.00 /credit hour
	Out-of-State Students	\$11,952/yr—\$498.00/credit hour
	<i>(School of Law rates differ)</i>	
Room and Board <i>(Average Per Year)</i>	Room	\$3,300 (per year)
	Board (15 meals per week)	\$1,780
	Residential Population	2,466
Financial Aid Profile	Students Receiving Aid	7,750 (37% of fall enrollment)
	Average Grants	\$3,358
	Average Loans	\$5,923
	Average Work Study	\$1,930
	Average Aid Package	\$7,012

HIGHLIGHTS OF GEORGE MASON UNIVERSITY'S HISTORY



George Mason University's growing reputation as an innovative educational leader is rooted in Virginia's strong educational tradition. By emphasizing the needs of its region, high technology, public policy, and the fine and performing arts, George Mason has created a curriculum and mission to meet the needs of Northern Virginia's extraordinary cosmopolitan constituency.

The university began as the Northern Virginia branch of the University of Virginia in 1957, offering courses in engineering and the liberal arts. Called University College, it opened in a renovated elementary school in Bailey's Crossroads with an enrollment of 17 students.

Eager to support the fledgling institution, the Town (now City) of Fairfax purchased 150 acres in 1958 and donated it to the University of Virginia for a permanent branch campus. The following year, the University of Virginia Board of Visitors selected the name George Mason College. Construction of the campus's first four buildings was completed in 1964. In September of that year, 356 students began their studies in the new classrooms.

In March 1966, the General Assembly authorized the expansion of George Mason College into a four-year, degree-granting institution and gave it the long-range mandate to expand into a major regional university. The first senior class received degrees in June 1968. Graduate programs began in September 1970, with the first master's degrees conferred in June 1971. The George Mason College Board of Control, supported by citizens of Alexandria, Falls Church, Arlington, and Fairfax counties, acquired an additional 442 acres. By the end of 1970, the college's Fairfax Campus reached 571 acres; it is now 677 acres.

In 1972, the Board of Visitors of the University of Virginia recommended that the college separate from its parent institution. On April 7, the governor signed the General Assembly legislation that established George Mason University as an independent member of the commonwealth's system of colleges and universities.

Since 1972, the university's development has been marked by rapid growth and innovative planning. In 23 years, enrollment has risen from 4,166 to 24,368 in Fall 1996. In 1979, George Mason was given the authority to grant doctoral degrees and began offering programs at this level. In the same year, the university acquired George Mason University School of Law located at the Arlington Campus.

In 1984, the first Robinson Professors, a group of outstanding scholars committed to undergraduate teaching and interdisciplinary scholarship, joined the faculty as the result of a generous bequest from Clarence J. Robinson.

Drawing prominent scholars from all fields, George Mason's outstanding faculty also includes James M. Buchanan, Nobel laureate in economics, Pulitzer Prize winners, IEEE Centennial Medalists, and recipients of numerous grants and awards including Fulbrights, National Science Foundation, and National Endowment of the Arts, among others. Endowed chairs have also brought many artists and scholars to campus.

In 1985, George Mason, in partnership with area businesses, developed an engineering program geared toward the emerging information technology field and started the School of Information Technology and Engineering (SITE). Through SITE, George Mason was also the first in the country to offer a doctoral degree in information technology.

The establishment of the Institute of the Arts in 1990 solidified the university's commitment to make the arts a pervasive part of students' lives. The Center for the Arts and the arts complex, which includes an art gallery, studio and rehearsal space, and performing venues such as TheaterSpace, are all components of the institute.

George Mason has expanded its presence to serve the entire Northern Virginia region by employing the revolutionary concept of the "distributed" university. In collaboration with county and state governments, the university established the Prince William Institute in Prince William County. A partnership with American Type Culture Collection, the world's foremost archive of living cultures, will lead to academic programs focusing on bioinformatics and make Prince William County a center for medical technology. Construction of the new campus began in 1995. The university is also expanding its presence in Arlington, home of the George Mason

University School of Law. Plans are underway for a new building and an increase in programming, ranging from business to international transactions.

The innovative George W. Johnson Center opened in April 1996. By combining student life resources with educational support facilities like an interactive library, George Mason has created the learning workspace of the future. Educational administrators from around the world have already come to tour the center.

George Mason University has achieved national distinction in many areas. Its reputation continues to grow as the university provides for an educational, cultural, and economic resource for the people of Northern Virginia, the commonwealth of Virginia, and the nation.

VIRGINIA HIGHER EDUCATION

The commonwealth of Virginia has chartered or statutorily established 71 degree-granting institutions, including 39 state-supported colleges and universities, 31 independent nonprofit institutions, and one proprietary college. Among the state-supported institutions, six offer doctoral programs, nine conduct four-year programs, and 24 are two-year colleges. Three of the six senior doctoral institutions are located in the state's urban areas: George Mason University (GMU) in Northern Virginia near Washington D.C., Old Dominion University (ODU) in the southeastern Tidewater area in Norfolk, and Virginia Commonwealth University (VCU) in Richmond. Two of the state's other doctoral universities, the University of Virginia (UVA) and Virginia Polytechnic Institute and State University (VPI), are located in the less densely populated central and southwestern parts of Virginia, while The College of William and Mary (CWM), founded by Royal Charter in 1693, is located in Colonial Williamsburg.

Table 1.1
PUBLIC FOUR-YEAR COLLEGES AND UNIVERSITIES IN VIRGINIA

Virginia Institutions	Headcount Fall 1996	Estimated Annual FTE 1996-97
George Mason University	24,368	17300
College of William and Mary	7,722	7594
Old Dominion University	17,800	13984
University of Virginia	21,488	20710
Virginia Commonwealth University	21,681	17736
Virginia Polytechnic Institute	26,645	25860
Christopher Newport University	4,565	3500
Clinch Valley College	1,416	1314
James Madison University	13,209	13191
Longwood College	3,325	3506
Mary Washington College	3,745	3558
Norfolk State University	8,352	7550
Radford University	8,270	8407
Virginia Military Institute	1,218	1546
Virginia State University	4,006	3812
Total	167,810	149,568

STATE COUNCIL OF HIGHER EDUCATION FOR VIRGINIA

The State Council of Higher Education for Virginia (SCHEV) was established in 1956. The council is both the coordinator of and the advocate for higher education in the commonwealth of Virginia. SCHEV is composed of 11 members appointed by the governor to four-year terms; no member may serve more than two consecutive four-year terms.

As of August 1996, the members and officers of SCHEV are:

James W. Beamer <i>Richmond, VA</i>	H. Lynn Hopewell, Jr. <i>Fairfax, VA</i>	John D. Padgett <i>(Vice Chairman) Norfolk, VA</i>
Jeffrey Brown <i>Richmond, VA</i>	Alan I. Kirshner <i>Glen Allen, VA</i>	Donald N. Patten <i>Newport News, VA</i>
William M. Dudley <i>Lynchburg, VA</i>	Elizabeth McClanahan <i>(Chairman) Abingdon, VA</i>	George G. Phillips, Jr. <i>Norfolk, VA</i>
Kate Obenshain Griffin <i>Winchester, VA</i>	Val S. McWhorter <i>Vienna, VA</i>	

BOARD OF VISITORS

The Board of Visitors (BOV) of George Mason University was created by an act of the General Assembly when the university became an independent institution. The act which established the Board of Visitors became effective April 7, 1972. The BOV is a corporate body serving under the leadership of a rector, vice rector, and secretary. The 16 members of the Board are appointed by the governor of Virginia on a rotating basis to serve four-year terms. A student representative (nonvoting member) is appointed by the Board of Visitors each year at the May meeting to serve a one-year term. The Board of Visitors, as of July 1996, are listed below:

Mr. Marvin Murray (Rector) <i>Alexandria, VA</i>	Mr. James Hazel <i>Richmond, VA</i>
Dr. Alam Hammad (Vice Rector) <i>Alexandria, VA</i>	Ms. Dianne G. Kay <i>McLean, VA</i>
Ms. Janice S. Golec (Secretary) <i>Arlington, VA</i>	Mr. M. Scott McGearry <i>Arlington, VA</i>
Ms. Constance M. Bedell <i>Springfield, VA</i>	The Honorable Edwin Meese, III <i>McLean, VA</i>
Mr. Larry Brown <i>Potomac, MD</i>	Mr. Jay H. Nussbaum <i>Great Falls, VA</i>
Ms. Sharon E. Davis <i>Arlington, VA</i>	Mr. David N. Olson <i>Ashburn, VA</i>
Joann P. DiGennaro, Esq. <i>McLean, VA</i>	The Honorable Lilla Richards <i>McLean, VA</i>
The Honorable Paula Dobriansky <i>Alexandria, VA</i>	Ms. Marguerite Beach (Student Rep) <i>Burke, VA</i>
Dr. Edwin J. Feulner, Jr. <i>Alexandria, VA</i>	

UNIVERSITY ADMINISTRATION, JANUARY 1997**PRESIDENT, ALAN G. MERTEN**

Vice President, University Relations	Helen J. Ackerman
Vice President and University Equity	Earl G. Ingram
Vice President for University Life	Karen Rosenblum
President, GMU Foundation	F. Duke Perry
Chief of Staff	Lawrence D. Czarda

PROVOST, DAVID L. POTTER

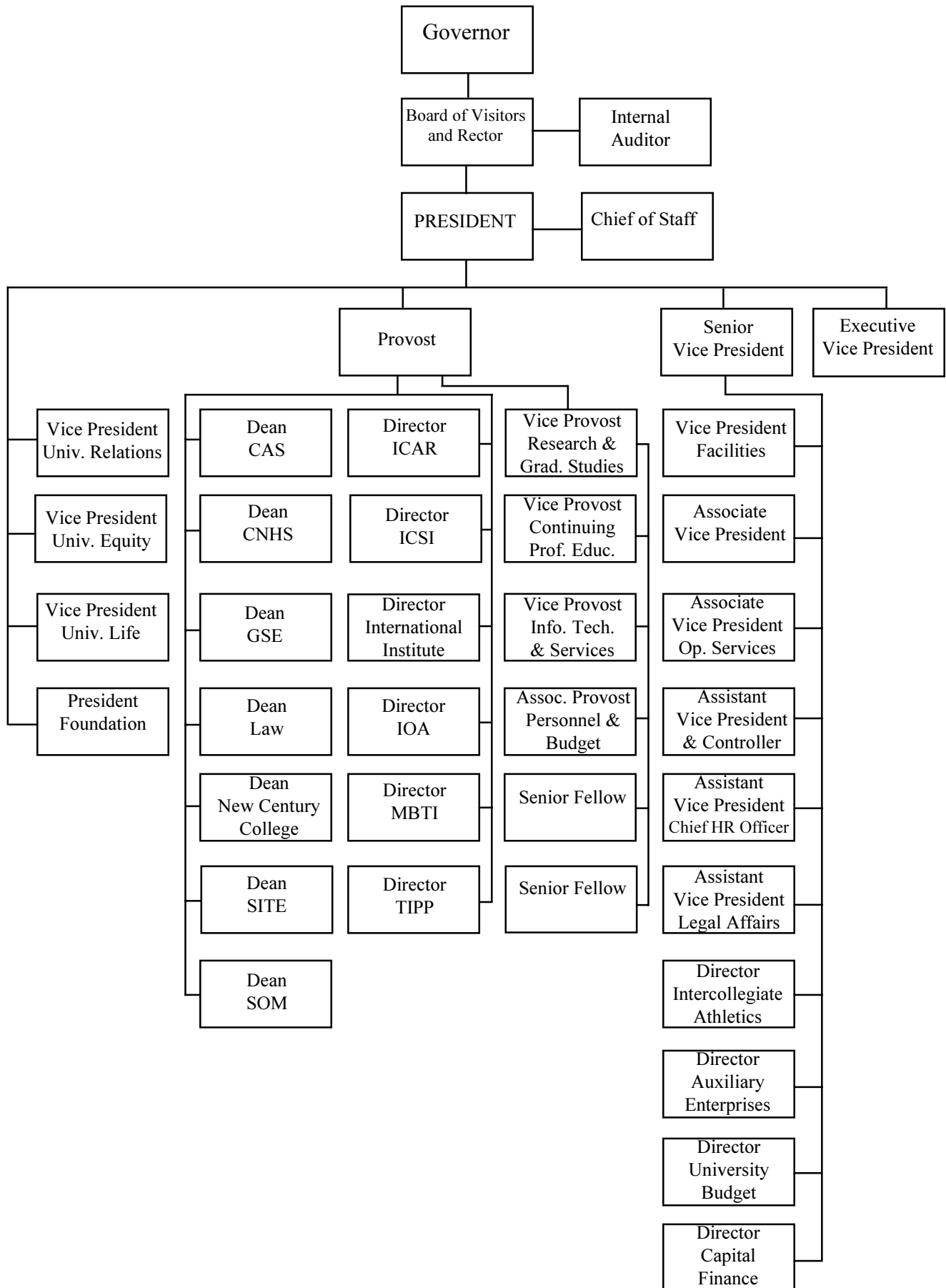
Vice Provost for Research and Graduate Studies	Deborah Boehm-Davis
Vice Provost for Information Technology and Services	John S. O'Connor
Vice Provost for Continuing Professional Education	Peter Denning
Associate Provost for Personnel and Budget	David W. Rossell
Senior Fellow	Lorna M. Irvine
Senior Fellow	Linda A. Schwartzstein

SENIOR VICE PRESIDENT, MAURICE W. SCHERRENS

Vice President for Facilities	Reid Herlichy
Associate Vice President	Suzanne Swope
Associate Vice President for Operational Services	Stanley E. Taylor
Assistant Vice President and Controller	Elizabeth Brock
Assistant Vice President and Chief Human Resource Officer	Keith Bushey
Assistant Vice President for Legal Affairs	Jeffrey A. Brandwine
Director of Intercollegiate Athletics	Thomas J. O'Connor
Director of Auxiliary Enterprises	David H. Swanson
Director of University Budget	Donna Kidd
Director of Capital Finance	James A. Stamp

EXECUTIVE VICE PRESIDENT, H. RANDALL EDWARDS

ADMINISTRATIVE ORGANIZATION OF GEORGE MASON UNIVERSITY



Student Enrollment Information

This section presents student enrollment information. A summary page is also presented in the “Glimpse” sheet located at the back of the Factbook. Further information on academic programs and degrees conferred can be found in Chapter 3.

A NOTE ABOUT DEFINITIONS

- Student enrollment in higher education is described in terms of both headcount and *FTE* (Full-Time Equivalence).

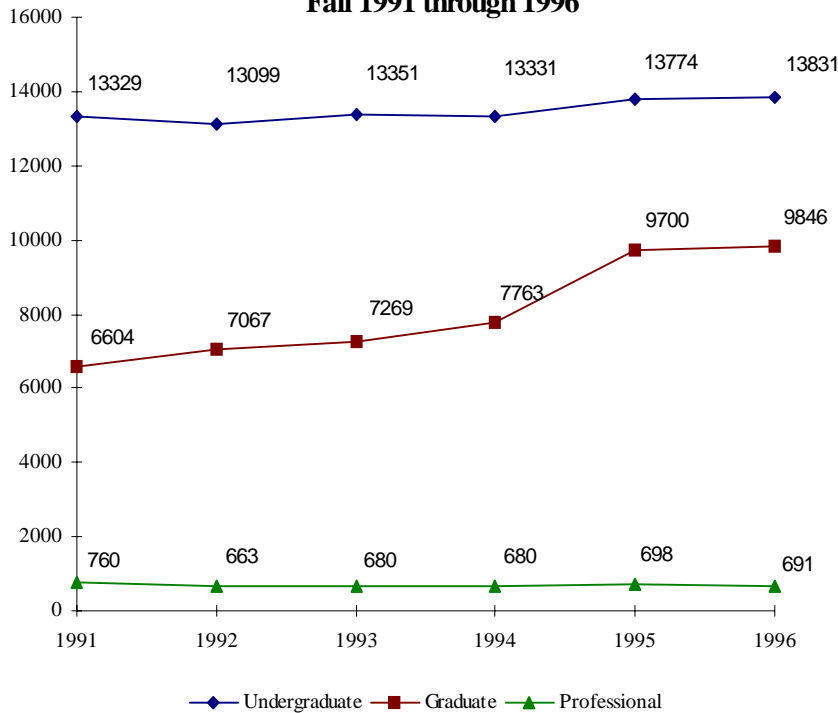
- *Student Headcount* is the count of individual students whose administrative records indicate that they were registered in a credit-bearing course as of the university’s opening enrollment census date for each semester.

- *Student FTE* is calculated by dividing students’ total credit hours by a nationally accepted full-time credit load. The divisor is 15 for undergraduate and law students and 12 for graduate students.

- Except in the School of Law, an individual student is classified as full-time if he or she maintains at least 75% of the standard full-time course load (i.e., 12 undergraduate credits, 9 graduate credits). Law students are classified according to whether they enroll in the full-time or the part-time program, regardless of how many credit hours they maintain.

For additional definitions, see the Glossary of Terms, pages 70-73.

Figure 2.1
Trends in Student Headcount Enrollment
Fall 1991 through 1996



student information

Table 2.1

	Applied	Approved		Enrolled (*1)		% Change from Fall 1995		
		Number	% of	Number	% of	Applied	Approved	Enrolled
			Applied		Approved			
First Time Freshmen								
Northern VA	3,017	2,197	72.8	1,295	58.9	2.9	-5.5	2.0
Other VA	1,189	775	65.2	394	50.8	-2.1	-12.0	5.9
Out of State	1,243	780	62.8	264	33.8	-7.9	-23.9	-7.4
Total	5,449	3,752	68.9	1,953	52.1	-0.9	-11.3	1.4
Transfer								
Northern VA CC	1,632	1,443	88.4	981	68.0	-9.8	-10.1	-13.4
Other VA Col	698	586	84.0	360	61.4	-5.5	-7.4	-2.4
Out of State Col	1,147	938	81.8	502	53.5	-6.1	-9.3	-6.0
Total	3,477	2,967	85.3	1,843	62.1	-7.7	-9.3	-9.5
UNDERGRADUATE TOTAL	8,926	6,719	75.3	3,796	56.5	-3.7	-10.5	-4.2
Masters								
Candidate	2,944	1,972	66.9	1,189	60.2	-2.8	-5.2	-7.7
Provisional	475	473	99.6	340	72.3	-3.6	-3.2	8.1
Special	558	462	82.8	263	56.9	23.5	17.9	13.9
Total	3,977	2,907	73.1	1,792	61.6	0.1	-1.8	-2.2
Certificate	64	51	79.7	16	31.4	25.5	15.9	-11.1
Doctoral	894	453	50.7	240	53.0	-10.2	-0.7	-5.9
GRADUATE TOTAL	4,935	3,411	69.1	2,048	60.0	-1.7	-1.4	-2.8
SCHOOL OF LAW	2,064	781	37.8	218	27.9	-21.5	3.9	1.9
UNIVERSITY TOTAL	15,925	10,911	68.5	6,062	55.6	-5.9	-6.9	-3.5

*Effective this reporting year, the definition of regional breakdown has been modified slightly to conform to definitions used for SCHEV reporting purposes. The figures for % change from Fall '95 are based on the Fall '95 breakdown using the modified definitions.

Figure 2.2
FIVE-YEAR ADMISSIONS TRENDS: APPLICATIONS, APPROVALS, AND NEW ENROLLEES

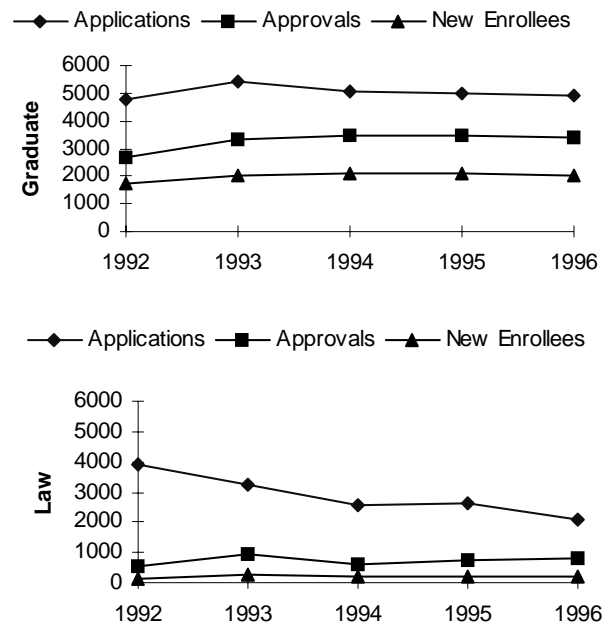
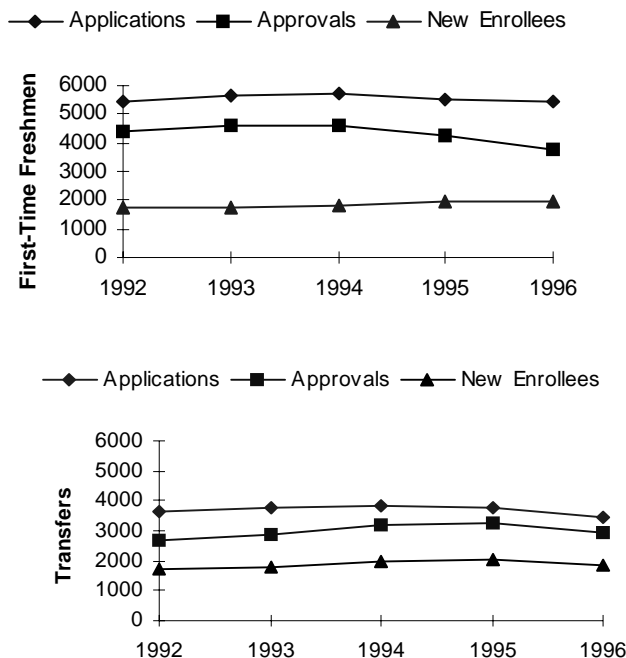


Table 2.2

New Enrollees by Academic Division -- Fall 1996

		Academic Division															
		CAS	SBA	GSE	SITE	NCC	NURS	IART	CCCE	ICSI	ICAR	INTL	PWI	IPP	IET	INDV	INTS
Total																	
Undergraduate Total	3,796	1,337	657	74	342	221	190	63	0	0	0	0	76	0	0	56	6
Freshmen																	
First-Time	1,953	570	257	21	155	212	45	36	-	-	-	-	8	-	-	1	1
Transfer	263	108	50	17	23	2	12	5	-	-	-	-	2	-	-	5	1
<i>Subtotal</i>	<i>2,216</i>	<i>678</i>	<i>307</i>	<i>38</i>	<i>178</i>	<i>214</i>	<i>57</i>	<i>41</i>	-	-	-	-	<i>10</i>	-	-	<i>6</i>	<i>2</i>
Sophmores																	
	664	281	154	16	61	3	52	10	-	-	-	-	14	-	-	18	1
Juniors																	
	676	278	154	15	71	4	50	8	-	-	-	-	42	-	-	21	3
Seniors																	
	240	100	42	5	32	-	31	4	-	-	-	-	10	-	-	11	-
Graduate Total	2,048	411	275	449	465	0	74	8	25	21	30	85	0	14	147	0	30
Masters																	
Candidate	1,188	265	262	267	155	-	63	3	-	-	15	64	-	-	57	-	24
Provisional	340	40	13	102	58	-	6	5	-	-	-	19	-	-	90	-	6
Certificate	16	6	-	1	5	-	-	-	2	-	-	2	-	-	-	-	-
Non-Degree	264	0	-	67	197	-	-	-	-	-	-	-	-	-	-	-	-
<i>Subtotal</i>	<i>1,808</i>	<i>311</i>	<i>275</i>	<i>437</i>	<i>415</i>	-	<i>69</i>	<i>8</i>	<i>2</i>	-	<i>15</i>	<i>85</i>	-	-	<i>147</i>	-	<i>30</i>
Doctoral																	
	240	100	-	12	50	-	5	-	23	21	15	-	-	14	-	-	-
Law	218																
University Total	6,062	1,748	932	523	807	221	264	71	25	21	30	85	76	14	147	56	36
CAS	College of Arts and Sciences					IART	Institute of the Arts					TIPP	Institute of Public Policy				
SBA	School of Business Administration					CCCE	Center for Community College Education					IET	Institute for Educational Transformation				
GSE	Graduate School of Education					ICSI	Institute for Computational Sciences and Informatics					INDV	Individualized Studies				
SITE	School of Information Technology and Engineering					ICAR	Institute for Conflict Analysis and Resolution					SOCW	Social Work				
NCC	New Century College					INTL	International Institute					TELE	Telecommunications				
NURS	College of Nursing and Health Science					PWI	Prince William Institute					UNDE	Undeclared Majors				

Table 2.3
New Enrollees Fall 1996
Demographic Characteristics

	Total	Gender		Ethnicity						Mean Age
		Female	Male	Afric Amer	Asian Amer	Hisp Amer	Native Amer	Non-Res Alien	White Amer	
Undergraduate Total	3,796	2,162	1,634	348	557	230	18	138	2,505	22.4
Freshmen										
First-Time	1,953	1,079	874	207	313	134	13	59	1,227	18.5
Transfer	263	154	109	27	24	20	1	9	182	22.3
<i>Subtotal</i>	2,216	1,233	983	234	337	154	14	68	1,409	19
Sophomores	664	383	281	52	80	41	1	32	458	25.3
Juniors	676	404	272	48	105	26	2	26	469	27.9
Seniors	240	142	98	14	35	9	1	12	169	30.6
Graduate Total	2,048	1,157	891	122	173	57	4	193	1,499	32.4
Master's										
Candidate	1,188	718	470	48	91	36	1	90	922	31.5
Provisional	340	228	112	36	23	6	1	35	239	32.6
Non-Degree	264	104	160	22	44	7	1	18	172	33.1
<i>Subtotal</i>	1,792	1050	742	106	158	49	3	143	1333	32
Certificate	16	9	7	1	1	1	0	2	11	37.6
Doctoral	240	98	142	15	14	7	1	48	155	35
Law	218	82	136	4	9	3	2	1	199	27.8
University Total	6,062	3,401	2,661	474	739	290	24	332	4,203	26

Figure 2.3

UNDERGRADUATE TRANSFERS BY LAST INSTITUTION TYPE

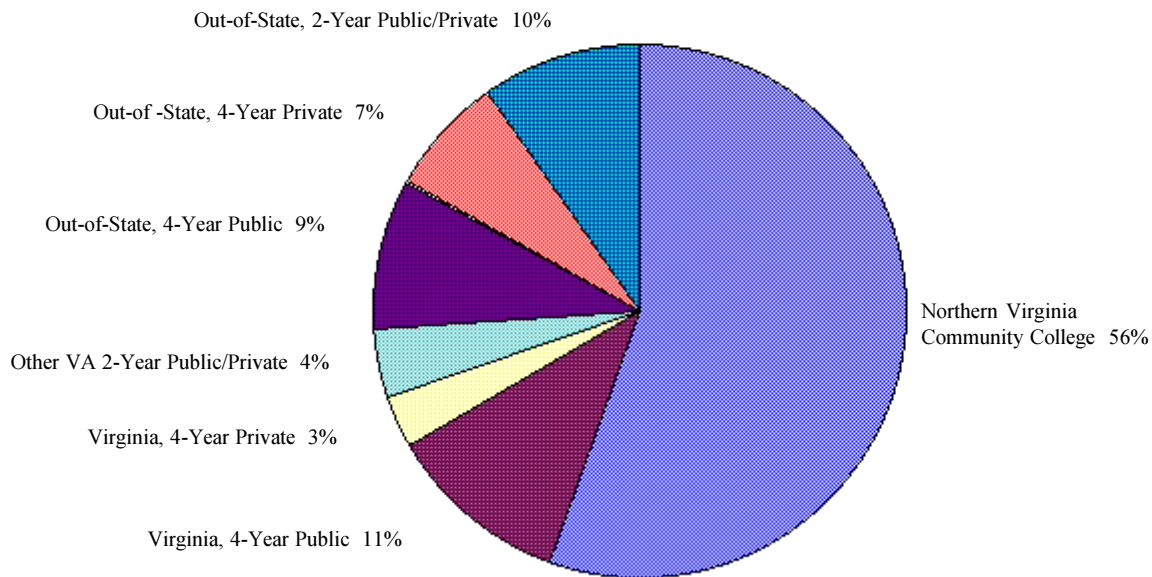


Table 2.4
NEW ENROLLEES BY RESIDENCY STATUS
FALL 1996

	Total		First-time Freshmen		Undergraduate Transfer		Graduate		Law	
	No.	%*	No.	%*	No.	%*	No.	%*	No.	%*
Virginia	5,091	84.0	1,689	86.5	1,676	90.9	1,549	75.6	177	81.2
Northern Virginia	4,339	71.6	1,292	66.2	1,493	81.0	1,392	68.0	162	74.3
Arlington	439	7.2	75	3.8	112	6.1	191	9.3	61	28.0
Fairfax County	2,277	37.6	750	38.4	790	42.9	677	33.1	60	27.5
Fauquier	56	0.9	10	0.5	24	1.3	22	1.1	-	-
Loudoun	173	2.9	51	2.6	67	3.6	54	2.6	1	0.5
Prince William	376	6.2	122	6.2	154	8.4	96	4.7	4	1.8
Alexandria	292	4.8	49	2.5	109	5.9	116	5.7	18	8.3
Fairfax City	262	4.3	72	3.7	82	4.4	102	5.0	6	2.8
Falls Church	234	3.9	80	4.1	80	4.3	65	3.2	9	4.1
Manassas City/Park	230	3.8	83	4.2	75	4.1	69	3.4	3	1.4
Other Virginia	752	12.4	397	20.3	183	9.9	157	7.7	15	6.9
Out-of-State	971	16.0	264	13.5	167	9.1	499	24.4	41	18.8
Maryland	134	2.2	58	3.0	7	0.4	68	3.3	1	0.5
Washington, DC	43	0.7	14	0.7	2	0.1	24	1.2	3	1.4
Other	794	13.1	192	9.8	158	8.6	407	19.9	37	17.0
University Total	6,062		1,953		1,843		2,048		218	

* Percent of University Total for the column.

Table 2.5
UNDERGRADUATE TRANSFERS FROM VIRGINIA INSTITUTIONS
WITH TEN OR MORE TRANSFER STUDENTS TO GMU
FALL 1992 THROUGH FALL 1996

	1992	1993	1994	1995	1996
Four-Year Institutions	239	276	264	285	269
Public	200	237	228	227	220
George Mason University*	67	83	81	79	69
James Madison University	18	16	16	12	20
Longwood College	8	10	7	6	10
Mary Washington College	9	4	9	6	11
Old Dominion University	18	21	14	13	16
Radford University	19	26	26	28	21
Virginia Commonwealth University	17	16	21	26	29
Virginia Polytechnic Institute	25	34	28	39	29
Other Four-Year Public	10	16	13	9	15
Private	39	39	36	58	49
Marymount University	14	7	13	13	14
Other Four-Year Private	25	32	23	45	35
Two-Year Institutions	1,053	1,032	1,149	1,217	1,072
Public	1,052	1,030	1,142	1,213	1,070
Germanna Community College	11	16	12	17	25
Lord Fairfax Community College	10	9	15	9	20
Northern Virginia Community College	970	963	1,066	1,133	979
Other Two-Year Public	61	42	49	54	46
Private	1	2	7	4	2
University Total	1,292	1,308	1,413	1,502	1,341

* Students returning to GMU after graduation to pursue an additional undergraduate program are counted among undergraduate transfer students.

Table 2.6

NEW ENROLLEES by LOCATION of LAST INSTITUTIONS ATTENDED * -- FALL 1996

	First-time Undergraduate				Total
	Freshmen	Transfer	Law	Graduate	
Alabama	1	7	2	16	26
Alaska	-	1	-	-	1
Arizona	1	8	4	11	24
Arkansas	-	4	-	4	8
California	6	28	8	56	98
Colorado	2	7	4	17	30
Connecticut	12	5	3	22	42
Delaware	2	2	-	10	14
District of Columbia	11	51	14	78	154
Florida	10	22	8	38	78
Georgia	1	9	4	7	21
Hawaii	1	5	-	3	9
Idaho	-	6	-	2	8
Illinois	5	11	4	21	41
Indiana	2	7	2	30	41
Iowa	1	2	-	9	12
Kansas	-	6	-	10	16
Kentucky	-	2	-	4	6
Louisiana	-	10	-	10	20
Maine	3	-	-	5	8
Maryland	63	49	3	89	204
Massachusetts	9	11	2	36	58
Michigan	2	5	2	20	29
Minnesota	3	2	-	10	15
Mississippi	-	-	-	7	7
Missouri	-	4	3	4	11
Montana	1	1	1	-	3
Nebraska	1	2	-	5	8
Nevada	-	1	-	-	1
New Hampshire	-	2	-	7	9
New Jersey	28	10	5	19	62
New Mexico	2	1	1	1	5
New York	39	27	13	105	184
North Carolina	6	34	7	41	88
Ohio	3	18	1	34	56
Oklahoma	-	3	-	5	8
Oregon	-	3	1	4	8
Pennsylvania	33	33	17	135	218
Rhode Island	1	1	2	10	14
South Carolina	2	9	-	11	22
South Dakota	1	2	-	4	7
Tennessee	3	3	1	7	14
Texas	1	22	4	30	57
Utah	-	2	-	2	4
Vermont	2	3	-	5	10
Virginia	1644	1341	91	620	3696
Washington	2	1	-	6	9
West Virginia	1	16	3	30	50
Wisconsin	1	2	-	6	9
Puerto Rico	-	1	-	1	2
Virgin Islands	-	1	-	-	1
Foreign	34	33	1	251	319
Unknown	13	7	7	190	217
Total	1953	1843	218	2048	6062

Table 2.7
TRENDS IN STUDENT DEMOGRAPHICS

	1992	1993	1994	1995	1996	Average Percent Change*
Total Headcount	20,829	21,300	21,774	24,172**	24,368**	4.08%
Gender						
Female	11,310	11,482	11,687	13,676	13,781	5.27%
Male	9,519	9,818	10,087	10,496	10,587	2.70%
Ethnicity						
African American	1,158	1,237	1,409	1,674	1,851	12.53%
Asian American	2,045	2,295	2,453	2,649	2,812	8.31%
Hispanic American	761	857	938	1,114	1,143	10.86%
Native American	102	99	81	92	86	-3.52%
Non-Resident Alien	752	776	822	950	1,071	9.36%
White American	16,011	16,036	16,071	17,693	17,405	2.21%
Residency						
Northern Virginia	16,847	17,325	17,147	19,115	18,517	2.54%
Other Virginia	1,636	1,651	2,211	2,166	2,825	15.81%
Out-of-State	2,346	2,324	2,416	2,891	3,026	6.84%
Age						
<i>Undergraduate</i>						
Under 25	9,713	9,484	9,898	9,783	9,873	0.44%
25 to 30	1,481	1,736	1,433	1,700	1,719	4.88%
Over 30	1,896	2,124	1,998	2,287	2,230	4.52%
Unknown	9	7	2	4	9	
<i>Graduate</i>						
Under 25	1,073	1,015	1,559	1,145	1,136	5.21%
25 to 30	2,165	2,257	2,334	2,776	2,759	6.50%
Over 30	3,810	3,977	3,861	5,742	5,932	13.37%
Unknown	19	20	9	37	19	
<i>Law</i>						
Under 25	169	214	272	158	149	1.53%
25 to 30	267	236	215	301	302	4.96%
Over 30	225	227	193	239	240	2.54%
Unknown	2	3	0	0	0	

* Average Annual Growth Rate

** Contract course work included

Table 2.8

STUDENT DEMOGRAPHICS BY ACADEMIC DIVISION--FALL 1996

	Student Level	Total	Gender		Ethnicity						Mean Age
			Female	Male	Afric Amer	Asian Amer	Hisp Amer	Nativ Amer	N-Res Alien	White Amer	
College of Arts and Sciences	Undergraduate	5,895	3,629	2,266	496	690	384	25	163	4,137	24.1
	Graduate	1,372	765	607	49	48	32	1	77	1,165	32.5
	<i>Total</i>	7,267	4,394	2,873	545	738	416	26	240	5,302	25.7
School of Business Admin.	Undergraduate	2,515	1,220	1,295	180	641	146	7	126	1,415	24.4
Graduate School of Education	Undergraduate	411	201	210	32	19	10	.	6	344	23.6
	Graduate	1,552	1,259	293	107	44	67	2	15	1,317	35.1
	<i>Total</i>	1,963	1,460	503	139	63	77	2	21	1,661	32.7
School of Information Technology and Engineering	Undergraduate	1,148	229	919	95	316	58	5	73	601	25.3
	Graduate	1,691	451	1,240	83	282	39	5	302	980	33.2
	<i>Total</i>	2,839	680	2,159	178	598	97	10	375	1,581	30.1
School of Law	Professional	691	251	440	25	32	4	2	1	627	29.9
New Century College	Undergraduate	365	203	162	52	36	27	2	4	244	19.0
College of Nursing and Health Science	Undergraduate	633	581	52	60	63	21	2	16	471	30.1
	Graduate	278	265	13	19	16	3	1	6	233	40.2
	<i>Total</i>	911	846	65	79	79	24	3	22	704	33.2
Institute of the Arts	Undergraduate	249	159	90	16	36	17	.	9	171	23.4
	Graduate	22	16	6	2	1	1	.	2	16	34.1
	<i>Total</i>	271	175	96	18	37	18	.	11	187	24.3
Center for Community College Education	Graduate	143	55	88	22	5	3	2	1	110	46.5
Institute for Computational Sciences & Informatics	Graduate	115	20	95	4	17	5	.	20	69	35.8
Institute for Conflict Analysis & Resolution	Graduate	99	65	34	9	3	3	1	10	73	34.3
Graduate Business Institute	Graduate	838	340	498	36	55	20	1	52	674	31.5
International Institute	Graduate	293	164	129	18	20	24	.	44	187	30.9
Prince William Institute	Undergraduate	211	72	139	20	12	20	3	2	154	25.3
The Institute of Public Policy	Graduate	90	20	70	4	5	1	.	14	66	39.4
Institute for Educational Transformation	Graduate	354	310	44	33	3	6	.	.	312	39.5
Individualized Studies	Undergraduate	239	158	81	24	9	10	4	.	192	40.1
Interdisciplinary Studies	Undergraduate	20	15	5	1	19	26.6
	Graduate	159	122	37	7	7	2	1	2	140	38.5
	<i>Total</i>	179	137	42	8	7	2	1	2	159	37.2
Social Work	Undergraduate	190	174	16	22	8	12	1	2	145	27.4
Telecommunications	Graduate	72	34	38	8	5	1	.	1	57	34.8
Undeclared Majors	Undergraduate	1,416	768	648	110	258	101	9	34	904	20.2
Extended Studies	Undergraduate	412	243	169	45	34	20	3	34	276	31.2
	Graduate	2,734	1,911	823	265	125	103	8	52	2,181	37.6
	<i>Total</i>	3,146	2,154	992	310	159	123	11	86	2,457	36.8
Guest Matriculants	Undergraduate	127	64	63	5	16	2	1	2	101	21.3
	Graduate	34	17	17	2	6	1	.	1	24	31.8
	<i>Total</i>	161	81	80	7	22	3	1	3	125	23.5
University Total	Undergraduate	13,831	7,716	6,115	1,158	2,138	828	62	471	9,174	24.5
	Graduate	9,846	5,814	4,032	668	642	311	22	599	7,604	35.2
	Professional	691	251	440	25	32	4	2	1	627	29.9
	<i>Total</i>	24,368	13,781	10,587	1,851	2,812	1,143	86	1,071	17,405	29.0

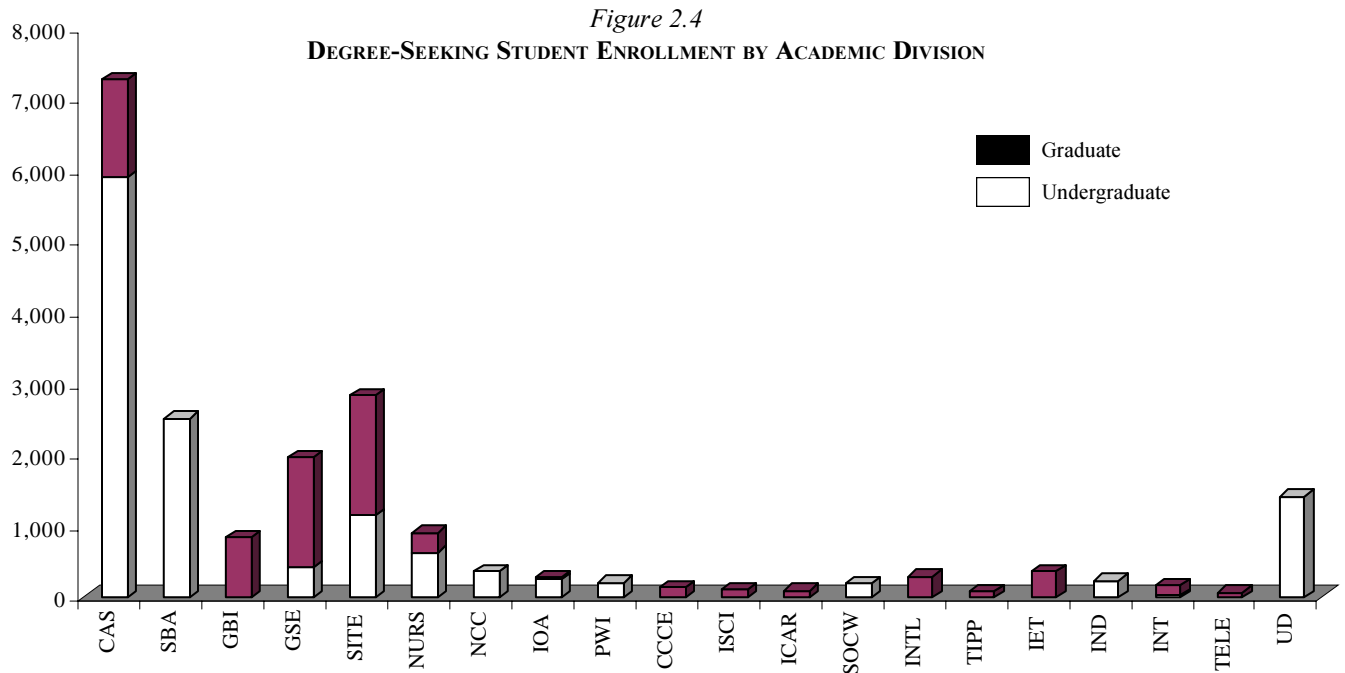


Table 2.9

UNDERGRADUATE STUDENT ENROLLMENT BY ACADEMIC DIVISION--FALL 1996

	Headcount		Course Load		Class Level				Non-Degree	FTE	
	No.	% of Total	Full-Time	Part-Time	Fresh	Soph	Jr	Sr		Total	% of Total
College of Arts and Sciences	5,895	42.6%	4,372	1,523	1,011	1,211	1,669	2,004	-	4852.3	44.1%
School of Business Admin.	2,515	18.2%	1,782	733	495	499	711	810	-	2015.6	18.3%
Graduate School of Education*	411	3.0%	346	65	60	100	115	136	-	356.9	3.2%
School of Information Technology and Engineering	1,148	8.3%	774	374	244	208	267	429	-	884.3	8.0%
New Century College	365	2.6%	359	6	235	124	5	1	-	379.9	3.5%
College of Nursing and Health Science	633	4.6%	379	254	90	112	140	291	-	460.7	4.2%
Institute of the Arts	249	1.8%	192	57	65	49	74	61	-	215.1	2.0%
Prince William Institute	211	1.5%	143	68	11	20	82	98	-	160.9	1.5%
Individualized Studies	239	1.7%	51	188	11	31	89	108	-	107.9	1.0%
Interdisciplinary Studies	20	0.1%	14	6	3	3	8	6	-	15.4	0.1%
Social Work	190	1.4%	116	74	26	42	53	69	-	138.2	1.3%
Undeclared Majors	1,416	10.2%	1,205	211	970	340	87	19	-	1227.9	11.2%
Extended Studies	412	3.0%	20	392	-	-	-	-	412	133.5	1.2%
Guest Matriculants	127	0.9%	13	114	-	-	-	-	127	42.6	0.4%
Undergraduate Total	13,831	100%	9,766	4,065	3,221	2,739	3,300	4,032	539	10991.3	100%

*Beginning in 1995 the undergraduate programs in health science and human services were moved to the Graduate School of Education. These programs represent all of the undergraduate enrollment reported under GSE.

Table 2.10

GRADUATE STUDENT ENROLLMENT BY ACADEMIC DIVISION--FALL 1996

	Headcount		Course Load		Class Level					FTE	
	No.	% of Total	Full-Time	Part-Time	Doc. Cand.	Pre-Cand.	Masters	Cert.	Non-Degree	Total	% of Total
College of Arts and Sciences	1,372	13.9%	368	1,004	85	303	964	15	5	665.4	15.6%
Graduate School of Education	1,552	15.8%	467	1,085	16	114	1,317	1	104	841.1	19.8%
School of Information Technology and Engineering	1,691	17.2%	240	1,451	47	251	987	10	396	668.3	15.7%
College of Nursing and Health Science	278	2.8%	72	206	2	43	230	2	1	128.3	3.0%
Institute of the Arts	22	0.2%	6	16	-	-	22	-	-	11.8	0.3%
Center for Community College Education	143	1.5%	19	124	14	118	-	10	1	55.2	1.3%
Institute for Computational Sciences and Informatics	115	1.2%	20	95	1	113	-	-	1	50.1	1.2%
Institute for Conflict Analysis and Resolution	99	1.0%	47	52	5	40	54	-	-	60.9	1.4%
Graduate Business Institute	838	8.5%	264	574	-	-	838	-	-	489.7	11.5%
International Institute	293	3.0%	77	216	-	-	288	3	2	151.8	3.6%
The Institute of Public Policy	90	0.9%	12	78	13	76	-	-	1	37.8	0.9%
Institute for Educational Transformation	354	3.6%	111	243	-	-	354	-	-	180	4.2%
Interdisciplinary Studies	159	1.6%	13	146	-	-	159	-	-	63.7	1.5%
Telecommunications	72	0.7%	4	68	-	-	72	-	-	24.3	0.6%
Extended Studies	2,734	27.8%	95	2,639	-	-	-	-	2,734	816.8	19.2%
Guest Matriculants	34	0.3%	4	30	-	-	-	-	34	13.2	0.3%
Graduate Total	9,846	100%	1,819	8,027	183	1,058	5,285	41	3,279	4258.4	100%

Table 2.11

LAW SCHOOL ENROLLMENT--FALL 1996

	Headcount		Course Load		Class Level				FTE	
	No.	% of Total	Full-Time	Part-Time	1st Year	2nd Year	3rd Year	4th Year	Total	% of Total
Day	374	54.1%	374	-	152	109	113	-	366.3	61.6%
Evening	317	45.9%	-	317	69	93	79	76	228.3	38.4%
School of Law	691	100%	374	317	221	202	192	76	594.5	100%

Table 2.12

STUDENT ENROLLMENT BY DIVISION, DEPARTMENT, AND DEGREE--FALL 1996

Division/ Department/Program	Degree	Gender		Ethnicity						
		Total	Female	Male	Afric Amer	Asian Amer	Hisp Amer	Nativ Amer	N-Res Alien	White Amer
College of Arts and Sciences										
Area Studies	BA Area Studies (European)*	1	0	1	0	0	0	0	0	1
Art History	BA Art (History)	31	25	6	2	4	1	0	1	23
Biology	BA Biology	172	117	55	15	34	15	1	6	101
	BS Biology	709	409	300	55	184	29	2	26	413
	BS Medical Technology	53	28	25	8	17	1	0	3	24
	MS Biology	61	34	27	3	0	0	0	0	58
	PHD Environmental Science and Public Policy	106	52	54	3	5	3	0	11	84
	CERT Environmental Management	2	1	1	0	0	0	0	0	2
	<i>Subtotal</i>	1,103	641	462	84	240	48	3	46	682
Chemistry	BA Chemistry	22	16	6	1	6	1	0	1	13
	BS Chemistry	89	51	38	11	24	4	0	3	47
	MS Chemistry	26	10	16	1	5	2	0	3	15
	<i>Subtotal</i>	137	77	60	13	35	7	0	7	75
Communications	BA Communication	766	472	294	94	55	50	3	23	541
Cultural Studies	PHD Cultural Studies	26	19	7	1	0	0	0	3	22
Economics	BA Economics	96	29	67	9	20	7	0	7	53
	BS Economics	83	24	59	1	13	6	0	8	55
	MA Economics	38	10	28	0	1	1	0	5	31
	PHD Economics	126	31	95	6	6	3	0	30	81
	<i>Subtotal</i>	343	94	249	16	40	17	0	50	220
English	BA English	614	426	188	44	44	28	6	8	484
	MA English (Linguistics)	31	26	5	1	3	0	0	2	25
	MA English (Literature)	61	39	22	0	0	1	0	1	59
	MA English (Professional Writing/Editing)	44	36	8	0	1	1	0	0	42
	MA English (Teaching of Writing and Literature)	37	26	11	1	2	1	0	0	33
	MFA Creative Writing	78	51	27	3	1	1	0	1	72
	CERT Teaching English as a Second Language	11	9	2	0	2	0	0	1	8
	<i>Subtotal</i>	876	613	263	49	53	32	6	13	723
	Modern and Classical Languages	BA Classical Studies	5	3	2	1	0	1	0	0
BA Foreign Languages		1	1	0	0	0	0	0	0	1
BA Foreign Languages (French)		26	21	5	1	3	3	0	3	16
BA Foreign Languages (German)		10	7	3	0	0	0	0	0	10
BA Foreign Languages (Russian)		3	3	0	0	0	0	0	1	2
BA Foreign Languages (Spanish)		72	56	16	2	3	27	0	2	38
MA Foreign Languages		34	25	9	1	3	6	0	2	22
CERT Translation		4	3	1	0	0	2	0	0	2
<i>Subtotal</i>	155	119	36	5	9	39	0	8	94	

Table 2.12 (continued)

STUDENT ENROLLMENT BY DIVISION, DEPARTMENT, AND DEGREE--FALL 1996

Division/ Department/Program	Degree	Total	Gender		Ethnicity					
			Female	Male	Afric Amer	Asian Amer	Hisp Amer	Nativ Amer	N-Res Alien	White Amer
Geography and Earth Systems Sciences	BA Geography	48	15	33	6	4	3	0	1	34
	BA Geology	6	3	3	0	0	0	0	0	6
	BS Earth Systems Science	46	23	23	1	2	3	0	0	40
	BS Geology*	10	5	5	0	0	0	0	0	10
	MS Geographic & <i>Cartographic Sciences</i>	59	21	38	0	0	0	0	2	57
	<i>Subtotal</i>	169	67	102	7	6	6	0	3	147
History	BA History	340	150	190	28	11	14	1	2	284
	MA History	109	48	61	3	1	1	1	0	103
	<i>Subtotal</i>	449	198	251	31	12	15	2	2	387
Mathematical Sciences	BA Mathematics	45	30	15	3	10	2	0	0	30
	BS Mathematics	69	34	35	6	15	5	0	1	42
	MS Mathematics	27	13	14	2	3	0	0	4	18
	<i>Subtotal</i>	141	77	64	11	28	7	0	5	90
Music	BA Music	36	22	14	2	9	2	0	1	22
	BM Music	122	72	50	7	7	5	1	2	100
	MA Music	42	25	17	2	2	2	0	2	34
	<i>Subtotal</i>	200	119	81	11	18	9	1	5	156
Philosophy and Religious Studies	BA Philosophy	59	21	38	3	4	2	1	0	49
Physics	BA Physics	3	1	2	0	1	0	0	0	2
	BS Physics	33	6	27	0	2	0	0	2	29
	MS Applied and Engineering Physics	13	5	8	0	0	0	0	0	13
	<i>Subtotal</i>	49	12	37	0	3	0	0	2	44
Program for Social & Organizational Learning	MS Professional Studies: Organizational Learning	16	9	7	1	2	0	0	0	13
Psychology	BA Psychology	719	600	119	54	59	63	2	17	524
	BS Psychology	418	306	112	30	29	16	3	9	331
	MA Psychology (Experimental Neuropsychology)	13	8	5	0	0	1	0	0	12
	MA Psychology (Human Factors Engr)	14	8	6	0	0	0	0	0	14
	MA Psychology (Indust/Organizational)	25	14	11	0	0	0	0	1	24
	MA Psychology (Life-Span Dev)	13	9	4	0	0	0	0	0	13
	MA Psychology (School)	22	21	1	2	2	0	0	1	17
	PhD Psychology	10	8	2	0	0	0	0	0	10
	PhD Psychology (Applied Experimental)	2	0	2	0	0	0	0	1	1
	PhD Psychology (Clinical)	43	33	10	0	5	1	0	0	37
	PhD Psychology (Developmental)	23	19	4	0	0	1	0	1	21
	PhD Psychology (Human Factors Engr)	13	7	6	1	1	0	0	0	11
	PhD Psychology (Indust/Organ)	36	26	10	1	0	1	0	0	34
	<i>Subtotal</i>	1,351	1,059	292	88	96	83	5	30	1,049

Table 2.12 (continued)

STUDENT ENROLLMENT BY DIVISION, DEPARTMENT, AND DEGREE--FALL 1996

Division/ Department/Program	Degree	Total	Gender		Ethnicity					
			Female	Male	Afric Amer	Asian Amer	Hisp Amer	Nativ Amer	N-Res Alien	White Amer
Public and International Affairs	BA Government and Politics	405	186	219	50	33	16	1	5	300
	BA International Studies	359	201	158	18	64	51	1	27	198
	BS Public Administration	144	65	79	16	9	7	2	0	110
	MPA Public Administration	169	89	80	13	2	4	0	4	146
	DPA Public Administration*	3	2	1	0	0	0	0	0	3
	<i>Subtotal</i>	1,080	543	537	97	108	78	4	36	757
Russian Studies	BA Russian Studies	14	8	6	0	0	1	0	0	13
Sociology and Anthropology	BA Anthropology	84	58	26	2	5	3	0	0	74
	BA Sociology	169	127	42	24	19	13	1	4	108
	MA Sociology	37	29	8	4	1	0	0	2	30
	<i>Subtotal</i>	290	214	76	30	25	16	1	6	212
Study of the Americas	BA Study of the Americas	11	7	4	2	0	5	0	0	4
CAS Total		7,267	4,394	2,873	545	738	416	26	240	5,302
School of Business Administration										
	BPRES Business Administration	2	1	1	0	1	0	0	0	1
	BPRES Finance	1	1	0	0	0	0	0	0	1
	BPRES Marketing	1	0	1	0	0	0	0	1	0
	<i>Subtotal</i>	4	2	2	0	1	0	0	1	2
	BS Accounting	657	384	273	63	175	46	2	25	346
	BS Business Administration	744	345	399	52	144	51	3	33	461
	BS Decision Sciences and Management Information Systems	438	195	243	24	197	13	2	25	177
	BS Finance	251	80	171	12	56	16	0	21	146
	BS Management	192	92	100	20	27	7	0	10	128
	BS Marketing	229	122	107	9	41	13	0	11	155
	<i>Subtotal</i>	2,511	1,218	1,293	180	640	146	7	125	1,413
SBA Total		2,515	1,220	1,295	180	641	146	7	126	1,415
Graduate School of Education										
Education	BPRES Education*	1	1	0	0	0	0	0	0	1
	MEd Curriculum and Instruction (Biling/Multicult Education)	15	13	2	0	5	5	0	1	4
	MEd Curriculum and Instruction (Early Childhood Education)	187	173	14	9	10	9	0	0	159
	MEd Curriculum and Instruction (Middle Education)	170	131	39	11	6	8	0	0	145
	MEd Curriculum and Instruction (Reading)	33	33	0	0	1	0	0	0	32
	MEd Curriculum and Instruction (Secondary Education)	236	156	80	12	5	17	1	0	201
	MEd Curriculum and Instruction (Teach Engl as a Second Language)	26	25	1	0	1	2	0	1	22
	MEd Counseling and Development	178	150	28	10	4	8	0	2	154
	MEd Education Leadership	182	141	41	31	2	7	0	1	141
	MEd Instructional Technology	50	36	14	3	0	1	0	1	45
	MEd Special Education	327	288	39	15	7	5	1	6	293
	PhD Education	130	100	30	15	3	4	0	1	107
	<i>Subtotal</i>	1,535	1,247	288	106	44	66	2	13	1,304

Table 2.12 (continued)

STUDENT ENROLLMENT BY DIVISION, DEPARTMENT, AND DEGREE--FALL 1996

Division/ Department/Program	Degree	Gender			Ethnicity					
		Total	Female	Male	Afric Amer	Asian Amer	Hisp Amer	Nativ Amer	N-Res Alien	White Amer
Health and Human Services	BS Health, Fitness & Recreation Resources	242	127	115	24	16	7	0	5	190
	BSEd Physical Education	167	72	95	7	3	3	0	1	153
	MS Exercise, Fitness & Health Promotion	17	12	5	1	0	1	0	2	13
	CERT Gerontology	2	2	0	1	0	0	0	0	1
	<i>Subtotal</i>	428	213	215	33	19	11	0	8	357
GSE Total		1,963	1,460	503	139	63	77	2	21	1,661
School of Information Technology and Engineering										
Applied and Engineering Statistics	MS Statistical Science	50	19	31	1	5	0	0	6	38
	CERT Federal Statistics	3	1	2	0	0	1	0	0	2
	<i>Subtotal</i>	53	20	33	1	5	1	0	6	40
Civil, Environmental and Infrastructure Engineering	BS Urban Systems Engineering	92	20	72	9	17	9	0	3	54
	MS Urban Systems Engineering	26	4	22	2	5	1	0	3	15
	<i>Subtotal</i>	118	24	94	11	22	10	0	6	69
Computer Science	BS Computer Science	636	138	498	41	193	26	2	40	334
	MS Computer Science	340	96	244	9	74	4	2	97	154
	<i>Subtotal</i>	976	234	742	50	267	30	4	137	488
Electrical and Computer Engineering	BS Electrical Engineering	346	52	294	39	87	20	3	19	178
	MS Electrical Engineering	196	30	166	11	41	5	0	30	109
	CERT Communications & Networking	1	0	1	0	0	0	0	0	1
	<i>Subtotal</i>	543	82	461	50	128	25	3	49	288
Information and Software Systems Engineering	MS Information Systems	407	146	261	23	81	11	1	58	233
	MS Software Systems Engineering	191	46	145	10	21	7	1	11	141
	CERT Software Engineering	2	0	2	0	0	0	0	1	1
	CERT Software Systems Engr.	1	0	1	0	0	0	0	0	1
	<i>Subtotal</i>	601	192	409	33	102	18	2	70	376
Operations Research and Engineering	MS Operations Research and Management Science	63	20	43	5	1	0	0	2	55
Information Technology	PHD Information Technology	309	62	247	17	43	5	1	82	161
Systems Engineering	BS Systems Engineering	74	19	55	6	19	3	0	11	35
	MS Systems Engineering	98	27	71	5	11	5	0	11	66
	CERT C3I	2	0	2	0	0	0	0	1	1
	CERT Syst Engr for Comp, Info, & Soft Int Sys	2	0	2	0	0	0	0	0	2
	<i>Subtotal</i>	176	46	130	11	30	8	0	23	104
SITE Total		2,839	680	2,159	178	598	97	10	375	1,581
School of Law										
Law Total	JD Law	436	188	248	21	21	3	2	1	388
	JD Law (Corporate & Securities)	34	13	21	1	1	0	0	0	32
	JD Law (International Business Transactions)	32	11	21	0	3	0	0	0	29
	JD Law (Litigation)	45	16	29	2	1	1	0	0	41
	JD Law (Patent)	116	16	100	1	6	0	0	0	109
	JD Law (Regulatory)	28	7	21	0	0	0	0	0	28
	<i>Subtotal</i>	691	251	440	25	32	4	2	1	627

Table 2.12 (continued)

STUDENT ENROLLMENT BY DIVISION, DEPARTMENT, AND DEGREE--FALL 1996

Division/ Department/Program	Degree	Total	Gender		Ethnicity					
			Female	Male	Afric Amer	Asian Amer	Hisp Amer	Nativ Amer	N-Res Alien	White Amer
New Century College										
	BAIN Integrative Studies	288	166	122	35	26	19	2	2	204
	BSIN Integrative Studies	77	37	40	17	10	8	0	2	40
NCC Total		365	203	162	52	36	27	2	4	244
College of Nursing and Health Science										
	BPRE Nursing	219	202	17	24	22	12	0	7	154
	BSN Nursing	414	379	35	36	41	9	2	9	317
	MSN Advanced Clinical Nursing	39	39	0	1	0	0	1	1	36
	MSN Nurse Practitioner	90	84	6	2	7	2	0	0	79
	MSN Nursing	56	55	1	6	3	1	0	1	45
	MSN Nursing Administration	42	38	4	6	3	0	0	1	32
	MSN/BA Nursing/Business Admin.	4	4	0	0	2	0	0	0	2
	PHD Nursing	11	11	0	1	0	0	0	0	10
	PHD Nursing Administration	34	33	1	3	1	0	0	3	27
	CERT Nursing Education	2	1	1	0	0	0	0	0	2
Nursing Total		911	846	65	79	79	24	3	22	704
Institute of the Arts										
Division of Studio Art	BA Art (Studio)	158	94	64	10	29	15	0	6	98
Division of Dance	BA Dance	16	16	0	1	1	0	0	1	13
	BFA Dance	21	19	2	1	1	0	0	0	19
	MFA Dance	10	10	0	1	0	1	0	1	7
	<i>Subtotal</i>	47	45	2	3	2	1	0	2	39
Visual Information Technology	MA Visual Information Technology	8	3	5	1	1	0	0	1	5
	MFA Visual Information Technology	4	3	1	0	0	0	0	0	4
	<i>Subtotal</i>	12	6	6	1	1	0	0	1	9
Division of Theater	BA Theater	53	29	24	3	5	2	0	2	41
	BFA Theater	1	1	0	1	0	0	0	0	0
	<i>Subtotal</i>	54	30	24	4	5	2	0	2	41
IOA Total		271	175	96	18	37	18	0	11	187
Center for Community College Education										
	DA Community College Education	132	51	81	22	5	3	2	1	99
	CERT Community College Education	11	4	7	0	0	0	0	0	11
CCCE Total		143	55	88	22	5	3	2	1	110
Institute for Computational Sciences and Informatics										
	PHD Computational Sciences and Informatics	115	20	95	4	17	5	0	20	69
Institute for Conflict Analysis and Resolution										
	MS Conflict Analysis and Resolution	54	39	15	6	2	2	1	2	41
	PHD Conflict Analysis and Resolution	45	26	19	3	1	1	0	8	32
ICAR Total		99	65	34	9	3	3	1	10	73

Table 2.12 (continued)

STUDENT ENROLLMENT BY DIVISION, DEPARTMENT, AND DEGREE--FALL 1996

Division/ Department/Program	Degree	Gender			Ethnicity					
		Total	Female	Male	Afric Amer	Asian Amer	Hisp Amer	Nativ Amer	N-Res Alien	White Amer
Graduate Business Institute										
	MS Accounting	63	36	27	3	6	1	0	8	45
	MBA Business Administration	595	228	367	30	38	13	1	44	469
	MBA Exec Business Admin	61	22	39	1	1	0	0	0	59
	MBA Fast Track									
	Business Administration	75	26	49	2	5	1	0	0	67
	MS Taxation	44	28	16	0	5	5	0	0	34
GBI Total		838	340	498	36	55	20	1	52	674
International Institute										
	MA International Transactions	290	162	128	17	20	24	0	43	186
	CERT International Trade	3	2	1	1	0	0	0	1	1
International Institute Total		293	164	129	18	20	24	0	44	187
Prince William Institute										
	BS Administration of Justice	211	72	139	20	12	20	3	2	154
The Institute of Public Policy										
	PHD Public Policy	90	20	70	4	5	1	0	14	66
Institute for Educational Transformation										
	MA Professional Studies: Teaching Track	147	131	16	14	3	2	0	0	128
	MED Curriculum and Instruction (Reflective Practicum with Subject Specification)	207	179	28	19	0	4	0	0	184
IET Total		354	310	44	33	3	6	0	0	312
Individualized Studies										
	BPRE Individualized Studies	98	66	32	10	3	6	2	0	77
	BIS Individualized Studies	141	92	49	14	6	4	2	0	115
Individualized Studies Total		239	158	81	24	9	10	4	0	192
Interdisciplinary Studies										
Undergraduate	BPRE Interdisciplinary Studies	15	13	2	1	0	0	0	0	14
	BAIS Interdisciplinary Studies	5	2	3	0	0	0	0	0	5
	<i>Subtotal</i>	20	15	5	1	0	0	0	0	19
Graduate	MAIS Interdisciplinary Studies (Liberal)	10	6	4	1	1	0	0	0	8
	MAIS Interdisciplinary Studies (Individualized)	149	116	33	6	6	2	1	2	132
	<i>Subtotal</i>	159	122	37	7	7	2	1	2	140
Interdisciplinary Studies Total		179	137	42	8	7	2	1	2	159
Social Work										
	BS Social Work	190	174	16	22	8	12	1	2	145
Telecommunications										
	MA Telecommunications	72	34	38	8	5	1	0	1	57
Undeclared Majors										
	BPRE Undergraduate Undeclared	1,416	768	648	110	258	101	9	34	904
Extended Studies and Guest Matriculants										
	Extended Studies	3,146	2,154	992	310	159	123	11	86	2,457
	Guest Matriculant	161	81	80	7	22	3	1	3	125
University Total Enrollment		24,368	13,781	10,587	1,851	2,812	1,143	86	1,071	17,405

*Degree program is being phased out and no longer accepts new students.

Table 2.13

ENROLLED INTERNATIONAL STUDENTS BY COUNTRY OF ORIGIN -- FALL 1996			
Country	Number of Students	Country	Number of Students
Afghanistan	4	Lithuania	1
Albania	1	Malaysia	3
Algeria	1	Malta	2
Angola	1	Mauritania	1
Argentina	6	Mauritius	2
Australia	9	Mexico	5
Austria	3	Morocco	8
Bahrain	3	Nepal	5
Bangladesh	9	Netherlands	5
Benin	1	Netherlands Antilles	1
Bolivia	6	New Zealand	2
Botswana	1	Nicaragua	1
Brazil	14	Nigeria	10
Bulgaria	10	Norway	4
Burma	1	Oman	5
Byelarus	1	Pakistan	31
Cameroon	4	Panama	1
Canada	17	Paraguay	1
Chile	4	Peru	21
China	90	Philippines	23
Colombia	6	Poland	3
Costa Rica	3	Portugal	1
Croatia	1	Qatar	1
Cyprus	6	Republic of Korea	56
Czechoslovakia	2	Romania	3
Denmark	1	Russia	13
Dominica	1	Saudi Arabia	31
Ecuador	5	Senegal	1
Egypt	16	Sierra Leone	1
El Salvador	2	Singapore	1
Estonia	4	Somalia	7
Ethiopia	14	South Africa	2
Finland	2	Spain	8
France	7	Sri Lanka	2
Germany	10	St Lucia	1
Ghana	5	Sudan	2
Greece	10	Sweden	11
Grenada	1	Switzerland	3
Guatemala	1	Syria	2
Guyana	1	Taiwan	41
Honduras	1	Tanzania	2
Hong Kong	5	Thailand	36
Hungary	7	Togo	1
Iceland	2	Trinidad and Tobago	3
India	152	Trust Terr. of the Pacific	1
Indonesia	6	Tunisia	1
Iran	13	Turkey	22
Iraq	1	U.S.S.R.	1
Ireland	2	Uganda	4
Israel	4	Ukraine	2
Italy	6	United Arab Emirates	3
Ivory Coast	1	United Kingdom	15
Jamaica	11	Uzbekistan	1
Japan	50	Venezuela	14
Jordan	14	Vietnam	9
Kenya	6	Yemen	3
Kuwait	3	Yugoslavia	3
Lebanon	4	Zaire	1
Liberia	1	Zimbabwe	4
Libya	2	Unknown	48
Total Students	1071	Total Countries	120

Table 2.14

**STUDENT FINANCIAL AID BY TYPE OF AWARD
ACADEMIC YEARS 1994-95 THROUGH 1996-97**

	1994-95	1995-96	Estimated 1996-97
STUDENT AID GRAND TOTAL	\$48,593,605	\$52,596,773	\$58,365,618
Number of Students	7,688	8,016	8,698
Average Award	\$6321	\$6,561	\$6,710
FEDERAL AID TOTAL	\$36,762,400	\$41,688,121	\$45,707,510
Pell Grant			
Total Aid Awarded	\$3,147,883	\$3,301,133	\$3,878,860
Number of Awards	2,223	2,343	2,558
Average Award	\$1,416	\$1,409	\$1,516
Federal Perkins Loan			
Total Aid Awarded	\$522,519	\$486,759	\$424,183
Number of Awards	278	262	224
Average Award	\$1,880	\$1,858	\$1,894
Supplemental Grants			
Total Aid Awarded	\$420,817	\$472,560	\$495,100
Number of Awards	1,688	2,048	2,068
Average Award	\$249	\$231	\$239
Federal Work-Study			
Total Aid Awarded	\$490,042	\$364,535	\$599,186
Number of Awards	288	263	327
Average Award	\$1,702	\$1,386	\$1,832
Federal Stafford Loan*			
Total Aid Awarded	\$21,913,811	\$23,982,876	\$25,674,272
Number of Awards	5,316	5,899	6,275
Average Award	\$4,122	\$4,066	\$4,091
Parent Loan			
Total Aid Awarded	\$2,105,062	\$3,366,575	\$3,555,247
Number of Awards	385	602	650
Average Award	\$5,468	\$5,592	\$5,470
Unsubsidized Stafford Loans**			
Total Aid Awarded	\$8,162,266	\$9,713,683	\$11,080,662
Number of Awards	1,797	2,164	2,374
Average Award	\$4,542	\$4,489	\$4,668
STATE AID TOTAL	\$4,187,158	\$5,282,558	\$5,211,865
Undergraduate			
Total Aid Awarded	\$3,265,091	\$4,359,389	\$4,469,791
Number of Awards	1,583	1,874	1,876
Average Award	\$2,063	\$2,188	\$2,383
College Scholarship Assistance			
Total Aid Awarded	\$262,000	\$253,000	\$223,000
Number of Awards	158	159	136
Average Award	\$1,658	\$1,591	\$1,640
Tuition Remission			
Total Aid Awarded	\$448,920	\$500,900	\$395,864
Number of Awards	130	148	106
Average Award	\$3,453	\$3,384	\$3,735

(table continues on next page)

Table 2.14 (continued)
STUDENT FINANCIAL AID BY TYPE OF AWARD
ACADEMIC YEARS 1994-95 THROUGH 1996-97

	1994-95	1995-96	Estimated 1996-97
Virginia Transfer Grant			
Total Aid Awarded	\$132,500	\$133,269	\$124,108
Number of Awards	68	39	52
Average Award	\$1,949	\$3,417	\$2,387
Undergraduate Student Financial Assistance Program			
Total Aid Awarded	\$36,000	\$36,000	\$15,500
Number of Awards	42	40	16
Average Award	\$857	\$900	\$969
Virginia Work-Study			
Total Aid Awarded	\$42,647	***	***
Number of Awards	23	***	***
Average Award	\$1,854		
OTHER AID TOTAL	\$7,644,047	\$7,617,182	\$7,446,243
Institutional Scholarships****			
Total Aid Awarded	\$6,131,536	\$6,243,522	\$6,110,988
Number of Awards	1390	1402	1223
Average Award	\$4,411	\$4,453	\$4,997
Other Grants and Scholarships			
Total Aid Awarded	\$827,817	\$881,749	\$876,659
Number of Awards	545	576	544
Average Award	\$1,519	\$1,539	\$1,612
Other Loan Program			
Total Aid Awarded	\$684,694	\$491,911	\$458,596
Number of Awards	89	77	68
Average Award	\$7,693	\$6,388	\$6,744

*Program changed to Federal Direct Stafford Loan for 1995-96

**Program changed to Federal Direct Unsubsidized Stafford Loan for 1995-96

***Funds were not allocated for this program in 1995-96 1996-97

****Awarded on merit

Table 2.15
Students in Housing by Admissions Status, Class Level
and Geographic Origin -- Fall 1996

		No. VA	Other VA	Out-of-State	Total	% of Total
Freshman	First Time	319	359	214	892	37
	New	21	23	11	55	2.3
	Returning	115	104	60	279	11.6
	Total	455	486	285	1,226	50.8
Sophomore	New	32	19	18	69	2.9
	Returning	209	200	101	510	21.1
	Total	241	219	119	579	24
Junior	New	10	13	7	30	1.2
	Returning	122	123	56	301	12.5
	Total	132	136	63	331	13.7
Senior	New	3	1	-	4	0.2
	Returning	87	87	34	208	8.6
	Total	90	88	34	212	8.8
Other	New	5	10	42	57	2.4
	Returning	3	-	5	8	0.3
	Total	8	10	47	65	2.7
Total New		390	425	292	1,107	45.9
<i>% of Total</i>		35.2	38.4	26.4	100	
Total Return		536	514	256	1,306	54.1
<i>% of Total</i>		41	39.4	19.6	100	
Grand Total in Housing		926	939	548	2,413	100.0
<i>% of Total</i>		38.4	38.9	22.7	100	

Table 2.16
Hourly Classroom Population
Fairfax and Arlington Campuses -- Fall 1996

	Fairfax Campus						Arlington Campus					
	Mon.	Tues.	Wed.	Thurs.	Fri.	Sat.	Mon.	Tues.	Wed.	Thurs.	Fri.	Sat.
8 a.m.	943	1,093	1,067	1,043	469	17	-	-	-	-	-	-
9 a.m.	2,606	4,796	2,688	4,721	1,391	334	35	41	35	41	59	59
10 a.m.	4,630	4,944	4,656	4,850	3,269	631	184	184	178	203	55	59
11 a.m.	4,151	5,481	4,128	5,441	3,355	620	149	143	143	162	86	59
12 Noon	3,460	4,129	3,406	4,075	2,648	353	26	-	26	34	-	59
1 p.m.	2,789	4,011	2,846	3,943	1,716	150	26	-	26	-	104	-
2 p.m.	3,547	4,728	3,831	4,628	1,181	133	276	268	276	271	-	-
3 p.m.	3,019	3,169	3,380	2,985	746	103	282	268	282	271	-	-
4 p.m.	2,530	2,921	2,879	2,720	545	44	112	79	112	79	-	-
5 p.m.	2,916	2,925	3,019	2,609	208	25	140	82	140	82	39	-
6 p.m.	2,759	2,698	3,009	2,432	245	-	422	417	307	393	43	-
7 p.m.	2,721	2,663	2,904	2,329	242	-	634	520	488	488	90	-
8 p.m.	2,924	3,757	2,796	3,008	112	-	589	455	458	414	34	-
9 p.m.	2,884	3,557	2,732	2,746	98	-	309	255	337	248	-	-
10 p.m.	2,801	3,412	2,670	2,661	98	-	-	-	14	-	-	-
All Day	44,680	54,284	46,011	50,191	16,323	2,410	3,184	2,712	2,822	2,686	510	236

Academic Program Information

University and Program Accreditation

George Mason University is accredited by the Commission on Colleges of the Southern Association of Colleges and Schools to award bachelor's, master's and doctoral degrees. In addition, some programs are accredited by specialized accrediting bodies.

Table 3.1

ACADEMIC PROGRAM ACCREDITATION

School/Programs	Accrediting Body	Date of Most Recent Accreditation
Specialized National Accreditation:		
School of Law	American Bar Association	1993
School of Business Administration	American Assembly of Collegiate Schools of Business	1989
Accounting Department	American Assembly of Collegiate Schools of Business	1991
<i>College of Nursing and Health Science</i>		
Nursing	National League for Nursing	1988
Social Work Program	Council on Social Work Education	1994
<i>Graduate School of Education</i>		
Unit Accreditation at the Basic and Advanced Levels	National Council for Accreditation of Teacher Education	1994
<i>School of Information Technology and Engineering</i>		
B.S. in Electrical Engineering	Accreditation Board for Engineering and Technology	1989
<i>Music Department</i>		
B.A./B.M./M.M.	National Association of Schools of Music	1993
B.A./B.M./M.M. Music Education Concentration	National Council for Accreditation Teacher Education	1994
<i>Psychology Department</i>		
Doctoral Clinical Program	American Psychological Association	1990
<i>Public and International Affairs Department</i>		
Master's of Public Administration Program	National Association of Schools of Public Affairs and Administration	1990
Specialized State Accreditation:		
College of Nursing and Health Science	Virginia State Board of Nursing	1987
Graduate School of Education Teacher Education Programs	Virginia State Board of Education	1994
Special Recognition:		
Chemistry Department	American Chemical Society	1993

program information

Table 3.2

ACADEMIC DEANS, INSTITUTE DIRECTORS, AND DEPARTMENT CHAIRS (As of July 1, 1997)

	Dean or Director	Department Chair
College of Arts and Sciences	Hans Bergmann*	
Art History		Sheila ffolliott
Biology		Larry Rockwood
Chemistry		George Mushrush
Communications		Don Boileau
Economics		Walter Williams
English		Rosemary Jann & Barbara Melosh
Foreign Languages and Literatures		Dick Gerdes
Geography and Earth Systems Science		Richard Diecchio
History		Jack Censer
Mathematical Sciences		Robert Sachs
Music		Joseph Shirk
Philosophy and Religious Studies		Wayne Froman
Physics and Astronomy		Joseph Lieb
Psychology		Robert Smith
Public and International Affairs		Louise White
Social and Organizational Learning, Program on		Mark Addleson
Sociology and Anthropology		Joseph Scimecca
School of Business Administration	Jack High*	
Graduate School of Education	Gary Galluzzo	
School of Information Technology and Engineering	Lloyd Griffiths	
Applied and Engineering Statistics		Edward Wegman
Computer Science		Henry Hamburger
Electrical and Computer Engineering		Gerald Cook
Information and Software Systems Engineering		Edgar Sibley
Operations Research and Engineering		Karla Hoffman
Systems Engineering		Alexander Levis
School of Law	Mark F. Grady	
New Century College	John S. O'Connor	
College Of Nursing and Health Science	Rita Carty	
Institute of the Arts	Sarah Lawless	
National Center for Community College Education	Gustavo Mellander	
Institute for Computational Sciences and Informatics	Murray Black	
Institute for Conflict Analysis and Resolution	Kevin P. Clements	
Institute of Graduate and Professional Business Studies	Jack High*	
The Institute of Public Policy	Kingsley E. Haynes	
Other Degree Programs		
Educational Transformation, Institute for		Hugh Sockett
Individualized Study Program		Randolph Lytton
Interdisciplinary Studies		Catherine McCormick & Donna Bafundo
Telecommunications		Cynthia Lont

*Interim

Table 3.3

DEGREE PROGRAMS OFFERED, CIP CODE AND YEAR INITIATED (AS OF FALL 1996)

	CIP Code	Year Initiated
College of Arts and Sciences		
Art History		
BA Art (History)	50.0701	1974
Biology		
BA Biology	26.0101	1966
BS Biology	26.0101	1966
BS Medical Technology	51.1005	1975
MS Biology	26.0101	1970
PhD Envir. Science and Public Policy	26.9999	1982
Chemistry		
BA Chemistry	40.0501	1967
BS Chemistry	40.0501	1967
MS Chemistry	40.0501	1988
Communication		
BA Speech Communication	23.1001	1980
Cultural Studies		
PhD Cultural Studies	24.0103	1994
Economics		
BA Economics	45.0601	1969
BS Economics	45.0601	1969
MA Economics	45.0601	1973
PhD Economics	45.0601	1982
English		
BA English	23.0101	1966
MA English	23.0801	1973
MFA Creative Writing	23.0501	1980
Foreign Languages and Literatures		
BA Foreign Languages	16.0101	1990
Classical Studies	16.0101	1988
French	16.0101	1968
German	16.0101	1971
Russian	16.0101	1992
Spanish	16.0101	1968
MA Foreign Languages	16.0101	1981
Geography and Earth Systems Science		
BA Geography	45.0701	1975
BA Geology	40.0601	1989
BS Earth Systems Science	40.0601	1992
MS Geography and Cartographic Sciences	45.0701	1979
History		
BA History	45.0801	1966
MA History	45.0801	1971
Mathematical Sciences		
BA Mathematics	27.0101	1967
BS Mathematics	27.0101	1967
MS Mathematics	27.0101	1970

Table 3.3 (continued)

DEGREE PROGRAMS OFFERED, CIP CODE AND YEAR INITIATED (AS OF FALL 1996)		
	CIP Code	Year Initiated
Music		
BA Music	50.0903	1972
BM Music	50.0903	1972
MA Music	50.0101	1982
Philosophy and Religious Studies		
BA Philosophy	38.0101	1971
Physics		
BA Physics	40.0808	1968
BS Physics	40.0808	1968
MS Applied and Engineering Physics	40.0899	1982
Psychology		
BA Psychology	42.0101	1969
BS Psychology	42.0101	1969
MA Psychology	42.0101	1972
PhD Psychology	42.0101	1990
Public and International Affairs		
BA Government and Politics	45.1001	1971
BA International Studies	45.0901	1976
BS Public Administration	44.0401	1973
MPA Public Administration	44.0401	1976
DPA Public Administration	44.0401	1980
Russian Studies		
BA Russian Studies	5.0199	1979
Sociology and Anthropology		
BA Anthropology	45.0201	1981
BA Sociology	45.1101	1970
MA Sociology	45.1101	1982
Study of the Americas		
BA Study of the Americas (American Canadian, Latin)	5.0102	1973
School of Business Administration		
BS Accounting	52.0301	1980
BS Business Administration	52.0101	1972
BS Decision Sciences and MIS	52.9999	1980
BS Finance	52.0801	1980
BS Management	52.0201	1980
BS Marketing	52.1401	1980
Graduate School of Education		
Education		
MEd Curriculum and Instruction	13.0301	1989
Bi-Lingual/Multicultural Education	13.0301	1989
Early Childhood Education	13.0301	1970
Instructional Technology	13.0301	1989
Middle Education	13.0301	1990
Reading Education	13.0301	1973
Secondary Education	13.0301	1971

Table 3.3 (continued)

DEGREE PROGRAMS OFFERED, CIP CODE AND YEAR INITIATED (AS OF FALL 1996)

	CIP Code	Year Initiated
Teaching English as a Second Language	13.0301	1989
MEd Counseling and Dev	13.1101	1972
MEd Education Leadersh	13.0401	1972
MEd Special Education	13.1001	1975
PhD Education (formerly DAEd)	13.0101	1980
Health and Human Services		
BS Health, Fitness and Rec. Resources	13.1307	1994
BS Parks, Rec., and Leisure Studies*	31.0101	1983
BSEd Physical Education	13.1314	1972
MS Exercise, Fitness and Health Promotion	13.1314	1982
MEd Health Education	13.1307	1983
School of Information Technology and Engineering		
Applied and Engineering Statistics		
MS Statistical Science	14.1301	1989
Civil, Environmental & Infrastructure Engineering		
BS Urban Systems Engineering	14.2798	1991
MS Urban Systems Engineering	14.2798	1994
Computer Sciences		
BS Computer Sciences	11.0101	1980
MS Computer Sciences	11.0101	1982
Electrical and Computer Engineering		
BS Electrical Engineering	14.1001	1981
MS Electrical Engineering	14.1001	1982
Information Systems and Software Systems Engineering		
MS Information Systems	11.0401	1982
MS Software Systems Engineering	14.2799	1989
Information Technology		
PhD Information Technology	14.9999	1985
Operations Research Engineering		
MS Oper. Research and Mgmt. Science	14.1701	1982
Systems Engineering		
BS Systems Engineering	14.2701	1987
MS Systems Engineering	14.2701	1984
School of Law		
JD Law	22.0101	1979
New Century College		
BAIN Integrative Studies	24.0199	1995
BSIN Integrative Studies	24.0199	1995
College of Nursing and Health Science		
BSN Nursing	51.1601	1974
MSN Nursing	51.1601	1979
Advanced Clinical Nursing	51.1601	1979
Nursing Administration	51.1601	1979
Nurse Practitioner	51.1601	1979
PhD Nursing	51.1602	1993
PhD Nursing Administration	51.1602	1986

Table 3.3 (continued)

DEGREE PROGRAMS OFFERED, CIP CODE AND YEAR INITIATED (AS OF FALL 1996)		
	CIP Code	Year Initiated
Institute of the Arts		
Division of Dance		
BA Dance	50.0301	1986
BFA Dance	50.0301	1988
MFA Dance	50.0101	1992
Division of Studio Art		
BA Art (Studio)	50.0701	1974
BFA Art (Studio)	50.0701	1996
Division of Theater		
BA Theater	50.0501	1975
Visual Information Technology		
MA Visual Information Technology	50.0101	1990
MFA Visual Information Technology	50.0101	1990
The Center for Community College Education		
DA Community College Education	13.1299	1990
Institute for Computational Sciences and Informatics		
PhD Computational Sciences & Informatics	30.0801	1992
Institute for Conflict Analysis and Resolution		
MS Conflict Analysis and Resolution	30.0501	1982
PhD Conflict Analysis and Resolution	30.0501	1988
Graduate Business Institute		
MS Accounting	52.0301	1985
MBA Business Administration	52.0201	1972
MBA Business Administration (Fast Track)	52.0201	1996
MBA Executive Business Administration	52.0201	1991
MS Taxation	52.1601	1991
The International Institute		
MA International Transactions	45.0901	1990
Prince William Institute		
BS Administration of Justice	43.0107	1971
The Institute of Public Policy		
PhD Public Policy	44.0501	1991
Other Academic Programs		
MEd Curriculum and Instruction (Reflective Practices w/ Subject Specialization)	13.0301	1989
BIS Individualized Study	24.0101	1975
BAIS Interdisciplinary Studies	24.0199	1994
MAIS Interdisciplinary Studies	30.9999	1982
MA Professional Studies: Organizational Learning	30.9999	1996
MA Professional Studies: Teaching Track	30.9999	1996
MA Professional Studies: Technology Management	30.9999	1996
BS Social Work	44.0701	1971
MA Telecommunications	09.9999	1990

* Degree Program is being phased out and no longer accepts new students

Figure 3.1
Number of Degrees Conferred
Academic Years 1990-91 through 1995-96

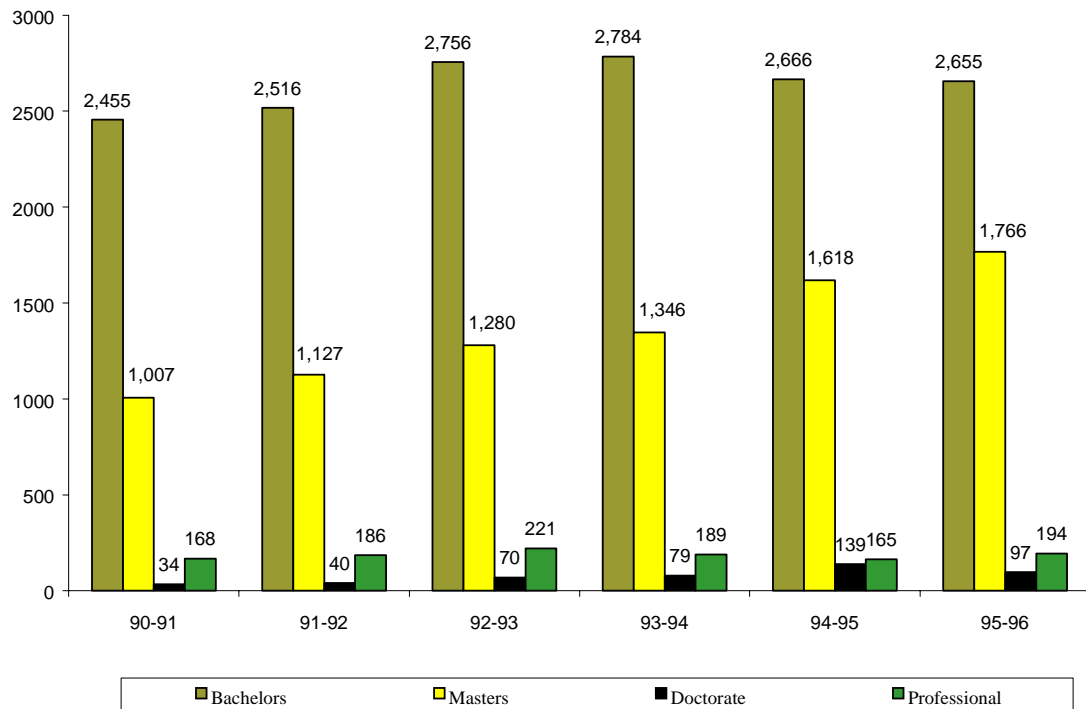


Table 3.4
DEGREES AND CERTIFICATES CONFERRED BY ACADEMIC DIVISION
ACADEMIC YEAR 1995-96

	Total	Degrees				
		Bachelors	Masters	Doctorate	Certificate	Professional
College of Arts and Sciences	2,068	1,562	396	42	68	-
School of Business Administration	385	385	-	-	-	-
Graduate School of Education	578	64	490	17	7	-
School of Info Technology and Engineering	572	180	334	19	39	-
School of Law	194	-	-	-	-	194
College of Nursing and Health Science	338	248	79	8	3	-
Institute of the Arts	44	41	3	-	-	-
Center for Community College Education	21	-	-	6	15	-
Institute for Conflict Analysis & Resolution	14	-	12	2	-	-
Graduate Business Institute	239	-	239	-	-	-
International Institute	153	-	151	-	2	-
Prince William Institute	47	47	-	-	-	-
The Institute of Public Policy	3	-	-	3	-	-
Individualized Studies	97	97	-	-	-	-
Interdisciplinary Studies	40	2	38	-	-	-
Social Work	29	29	-	-	-	-
Telecommunications	24	-	24	-	-	-
Total	4,846	2,655	1,766	97	134	194

Table 3.5
DEGREES CONFERRED IN ACADEMIC YEAR 1995-96

Division	Department/Program	Degree	Gender		Ethnicity						
			Total	Female	Male	African Amer	Asian Amer	Hispanic Amer	Native Amer	N-Res Alien	White Amer
College of Arts and Sciences											
Art History		BA Art (History)	15	13	2	-	-	1	-	1	13
Biology		BA Biology	33	21	12	1	4	2	-	3	23
		BS Biology	105	70	35	3	27	6	-	3	66
		BS Medical Technology	7	4	3	1	4	-	-	-	2
		MS Biology	30	17	13	-	1	-	-	1	28
		PHD Environmental Science and Public Policy	6	3	3	-	-	-	-	-	6
	CERT Environmental Management	14	10	4	-	-	-	-	-	14	
		<i>Subtotal</i>	195	125	70	5	36	8	-	7	139
Chemistry		BA Chemistry	4	1	3	-	2	-	-	-	2
		BS Chemistry	13	7	6	1	1	1	-	-	10
		MS Chemistry	8	4	4	1	1	-	-	2	4
		<i>Subtotal</i>	25	12	13	2	4	1	-	2	16
Communications		BA Communication	187	126	61	22	13	10	1	7	134
Economics		BA Economics	49	18	31	2	13	6	-	4	24
		BS Economics	46	14	32	2	11	2	-	-	31
		MA Economics	23	7	16	-	1	-	-	4	18
		PHD Economics	11	2	9	-	-	1	-	1	9
		<i>Subtotal</i>	129	41	88	4	25	9	-	9	82
English		BA English	237	171	66	19	16	9	-	3	190
		MA English: Linguistics	24	17	7	-	1	-	-	1	22
		MA English (Literature)	23	15	8	-	1	-	-	1	21
		MA English (Professional Writing and Editing)	13	10	3	1	-	1	-	-	11
		MA English (Teaching Writing and Literature)	16	15	1	-	-	1	-	-	15
		MFA Creative Writing	21	9	12	-	-	1	-	-	20
		CERT Teaching English as a Second Language	39	30	9	1	-	1	-	4	33
		<i>Subtotal</i>	373	267	106	21	18	13	-	9	312
Modern Classical Languages		BA Classical Studies	4	2	2	-	1	-	-	-	3
		BA Modern and Classical Languages (French)	10	8	2	-	1	-	-	-	9
		BA Modern and Classical Languages (German)	4	4	-	-	-	-	-	-	4
		BA Modern and Classical Languages (Spanish)	24	17	7	1	2	10	-	1	10
		MA Modern & Classical Lang	12	10	2	1	-	3	-	2	6
		CERT Translation	3	3	-	1	-	-	-	1	1
		<i>Subtotal</i>	57	44	13	3	4	13	-	4	33

Table 3.5 (continued)

DEGREES CONFERRED IN ACADEMIC YEAR 1995-96

Division	Department/Program	Degree	Total	Gender		Ethnicity					
				Female	Male	African Amer	Asian Amer	Hispanic Amer	Native Amer	N-Res Alien	White Amer
Geography and Earth Systems Sciences	BA Geography		19	7	12	1	-	-	-	-	18
	BA Geology		2	1	1	-	-	-	-	-	2
	BS Earth Systems Science		9	3	6	-	1	-	-	-	8
	BS Geology*		1	-	1	-	-	-	-	-	1
	MS Geographic & Cartographic Sciences		12	3	9	-	-	-	-	-	12
	CERT Cartography		5	3	2	1	-	-	-	-	4
	<i>Subtotal</i>		48	17	31	2	1	-	-	-	45
History	BA History		103	55	48	4	4	4	-	-	91
	MA History		48	18	30	-	-	-	-	-	48
	<i>Subtotal</i>		151	73	78	4	4	4	-	-	139
Mathematical Sciences	BA Mathematics		13	9	4	-	7	-	-	-	6
	BS Mathematics		16	10	6	3	2	1	-	-	10
	MS Mathematics		2	1	1	-	-	-	-	-	2
	<i>Subtotal</i>		31	20	11	3	9	1	-	-	18
Music	BA Music		3	3	-	-	-	-	-	-	3
	BM Music		16	9	7	-	-	2	-	-	14
	MA Music		14	5	9	1	-	-	-	-	13
	<i>Subtotal</i>		33	17	16	1	-	2	-	-	30
Philosophy and Religious Studies	BA Philosophy		14	6	8	1	-	-	-	-	13
Physics	BS Physics		5	1	4	-	-	1	-	-	4
	MS Applied and Eng. Physics		9	2	7	-	-	-	-	2	7
	<i>Subtotal</i>		14	3	11	-	-	1	-	2	11
Psychology	BA Psychology		155	127	28	8	16	18	1	1	111
	BS Psychology		112	80	32	9	12	1	-	3	87
	MA Psychology		13	8	5	-	3	-	-	-	10
	MA Psychology (Exper Neuropsychology)		11	6	5	-	-	1	-	-	10
	MA Psychology (Human Factors Engineering)		4	3	1	-	-	-	-	-	4
	MA Psychology (Indust/Organ)		6	3	3	-	-	-	-	-	6
	MA Psychology (Life-Span Devel)		1	1	-	-	-	-	-	-	1
	MA Psychology (School)		13	13	-	-	-	-	-	-	13
	PHD Psychology		9	6	3	1	-	1	-	-	7
	PHD Psychology (Clinical)		6	4	2	1	-	1	-	-	4
	PHD Psychology (Developmental)		2	2	-	-	-	-	-	-	2
	PHD Psychology (Indust/Organ)		4	2	2	-	-	-	-	-	4
	CERT Psychology Technician		6	5	1	-	-	-	-	-	6
	<i>Subtotal</i>		342	260	82	19	31	22	1	4	265

Table 3.5 (continued)

DEGREES CONFERRED IN ACADEMIC YEAR 1995-96

Division	Department/Program	Degree	Gender			Ethnicity					
			Total	Female	Male	African Amer	Asian Amer	Hispanic Amer	Native Amer	N-Res Alien	White Amer
Public and International Affairs	BA Government and Politics		111	52	59	10	7	7	-	-	87
	BA International Studies		99	53	46	4	9	10	-	5	71
	BS Public Administration		64	24	40	1	10	3	-	-	50
	MPA Public Administration		82	43	39	8	2	1	1	-	70
	DPA Public Administration		4	-	4	-	-	-	-	2	2
	<i>Subtotal</i>		360	172	188	23	28	21	1	7	280
Russian Studies	BA Russian Studies		7	2	5	-	-	-	-	-	7
Sociology and Anthropology	BA Anthropology		24	13	11	1	2	2	-	-	19
	BA Sociology		42	37	5	4	2	3	-	1	32
	MA Sociology		11	6	5	1	1	-	-	1	8
	CERT Applied Archeology		1	1	-	-	-	-	-	-	1
	<i>Subtotal</i>		78	57	21	6	5	5	-	2	60
Study of the Americas	BA Study of the Americas		9	8	1	1	-	2	-	-	6
CAS Total			2068	1263	805	117	178	113	3	54	1603
School of Business Administration											
	BS Accounting		150	89	61	7	29	3	-	4	107
	BS Business Administration		23	13	10	-	4	-	-	2	17
	BS Decision Science & MIS		93	40	53	2	37	2	-	2	50
	BS Finance		53	23	30	4	6	2	1	4	36
	BS Management		27	17	10	3	3	1	-	1	19
	BS Marketing		39	22	17	2	7	2	-	2	26
SBA Total			385	204	181	18	86	10	1	15	255
Graduate School of Education											
Education	MED C&I (Biling/Multicult Ed)		11	10	1	-	1	1	-	-	9
	MED C&I (Early Childhood Ed)		65	62	3	1	2	3	-	-	59
	MED C&I (Instructional Tech)		15	13	2	-	-	-	-	-	15
	MED C&I (Middle Education)		54	45	9	1	-	-	1	-	52
	MED C&I (Reading)		9	9	-	-	-	-	-	-	9
	MED C&I (Secondary Education)		78	55	23	1	3	2	-	-	72
	MED C&I (Teaching English as a Second Language)		13	12	1	-	1	-	-	2	10
	MED Counseling and Development		44	37	7	4	-	2	-	1	37
	MED Education Leadership		100	65	35	19	2	6	1	1	71
	MED Special Education		82	74	8	3	-	-	-	1	78
	PHD Education		17	12	5	2	1	-	-	-	14
	<i>Subtotal</i>		488	394	94	31	10	14	2	5	426

Table 3.5 (continued)

DEGREES CONFERRED IN ACADEMIC YEAR 1995-96

Division	Department/Program	Degree	Gender		Ethnicity						
			Total	Female	Male	African Amer	Asian Amer	Hispanic Amer	Native Amer	N-Res Alien	White Amer
Human Services		BS Health, Fitness & Recreation Resources	34	21	13	-	1	1	1	-	31
		BSED Physical Education	30	15	15	2	2	1	-	-	25
		MS Exercise Science and Health	19	11	8	-	-	-	-	-	19
		CERT Gerontology	7	7	-	-	1	-	-	-	6
		<i>Subtotal</i>	90	54	36	2	4	2	1	-	81
GSE Total			578	448	130	33	14	16	3	5	507
School of Information Technology & Engineering											
Applied and		MS Statistical Science	13	4	9	1	1	-	-	1	10
Engineering Statistics		CERT Federal Statistical System	3	1	2	-	-	-	-	-	3
		<i>Subtotal</i>	16	5	11	1	1	-	-	1	13
Civil,Environmental		BS Urban Systems Engineering	15	5	10	-	1	1	-	1	12
Infrastructure Engr		MS Urban Systems Engineering	4	1	3	-	1	-	-	-	3
		<i>Subtotal</i>	19	6	13	-	2	1	-	1	15
Computer Science		BS Computer Science	104	26	78	2	47	-	3	9	43
		MS Computer Science	74	24	50	-	19	1	-	20	34
		<i>Subtotal</i>	178	50	128	2	66	1	3	29	77
Electrical and		BS Electrical Engineering	52	8	44	4	14	-	-	2	32
Computer		MS Electrical Engineering	44	3	41	-	7	1	-	9	27
Engineering		<i>Subtotal</i>	96	11	85	4	21	1	-	11	59
Information and		MS Information Systems	106	39	67	5	25	3	-	12	61
Software Systems		MS Software Systems Engineering	45	12	33	2	9	-	-	5	29
Engineering		CERT Information Engineering	8	2	6	-	3	-	-	1	4
		CERT Software Engineering	20	4	16	-	6	1	-	3	10
		<i>Subtotal</i>	179	57	122	7	43	4	-	21	104
Operations		MS Operations Research									
Research and		and Management Science	25	7	18	2	-	-	-	3	20
Engineering		CERT Operations Research									
		and Engineering	2	2	-	-	-	-	-	-	2
		<i>Subtotal</i>	27	9	18	2	-	-	-	3	22
Office of the Dean		PHD Information Technology	19	-	19	-	2	1	1	3	12
Systems		BS Systems Engineering	10	3	7	-	3	1	1	3	2
Engineering		MS Systems Engineering	22	5	17	-	3	-	-	4	15
		CERT C3I	4	1	3	-	-	-	-	1	3
		CERT Syst Engr for Comp,									
		Info, & Soft Int Sys	2	1	1	-	-	-	-	-	2
		<i>Subtotal</i>	38	10	28	-	6	1	1	8	22
SITE Total			572	148	424	16	141	9	5	77	324

Table 3.5 (continued)
DEGREES CONFERRED IN ACADEMIC YEAR 1995-96

Division	Department/Program	Degree	Total	Gender		Ethnicity					
				Female	Male	African Amer	Asian Amer	Hispanic Amer	Native Amer	N-Res Alien	White Amer
School of Law											
		JD Law	164	71	93	10	4	3	2	-	145
		JD Law (Corporate & Securities)	2	-	2	-	-	-	-	-	2
		JD Law (International Business Transactions)	10	5	5	4	2	-	-	-	4
		JD Law (Litigation)	5	2	3	-	-	-	-	-	5
		JD Law (Patent)	13	2	11	-	1	-	-	-	12
Law Total			194	80	114	14	7	3	2	-	168
College of Nursing and Health Science											
		BSN Nursing	248	223	25	19	21	10	3	5	190
		MSN Advanced Clinical Nursing	15	15	-	-	-	-	-	1	14
		MSN Nurse Practitioner	38	37	1	1	3	-	-	-	34
		MSN Nursing	6	6	-	-	-	-	-	-	6
		MSN Nursing Administration	20	19	1	1	-	-	-	2	17
		PHD Nursing	8	8	-	-	-	1	-	-	7
		CERT Nursing Education	3	3	-	1	-	-	-	1	1
CNHS Total			338	311	27	22	24	11	3	9	269
Institute of the Arts											
Division of Dance		BA Dance	3	3	-	-	-	-	-	-	3
		BFA Dance	4	3	1	-	1	-	-	-	3
		<i>Subtotal</i>	7	6	1	-	1	-	-	-	6
Division of Studio Art		BA Art (Studio)	29	18	11	1	4	1	-	1	22
Division of Theater		BA Theater	5	2	3	-	-	1	-	-	4
Visual Information Technology		MA Visual Information Technology	3	1	2	-	-	-	-	2	1
IOA Total			44	27	17	1	5	2	-	3	33
Center for Community College Education											
		DA Community College Education	6	5	1	-	-	-	-	-	6
		DIPL Community College Education	15	6	9	-	-	1	-	-	14
CCCE Total			21	11	10	-	-	1	-	-	20
Institute for Conflict Analysis & Resolution											
		MS Conflict Analysis and Resolution	12	7	5	-	-	-	-	2	10
		PHD Conflict Analysis and Resolution	2	1	1	-	-	-	-	-	2
ICAR Total			14	8	6	-	-	-	-	2	12

Table 3.5 (continued)
DEGREES CONFERRED IN ACADEMIC YEAR 1995-96

Division Department/Program Degree	Total	Gender		Ethnicity					
		Female	Male	African Amer	Asian Amer	Hispanic Amer	Native Amer	N-Res Alien	White Amer
Graduate Business Institute									
MS Accounting	17	5	12	-	2	1	-	1	13
MBA Business Administration	172	59	113	9	12	4	-	9	138
MBA Executive Business Admin.	28	10	18	-	-	-	-	-	28
MS Taxation	22	7	15	2	-	-	-	-	20
GBI Total	239	81	158	11	14	5	-	10	199
International Institute									
MA International Transactions	151	76	75	5	9	14	-	9	114
CERT International Trade	2	2	-	-	-	-	-	1	1
Int'l Institute Total	153	78	75	5	9	14	-	10	115
Prince William Institute									
BS Administration of Justice	47	15	32	2	2	3	-	-	40
The Institute of Public Policy									
PHD Public Policy	3	-	3	-	-	-	-	1	2
Individualized Studies									
BIS Individualized Studies	97	67	30	9	2	2	-	1	83
Interdisciplinary Studies									
BAIS Interdisciplinary Studies	2	2	-	-	-	-	-	-	2
MAIS Interdisciplinary Studies, (Individualized)	35	25	10	1	1	3	-	3	27
MAIS Interdisciplinary Studies, (Liberal)	3	2	1	-	-	-	-	-	3
Interdis. Studies Total	40	29	11	1	1	3	-	3	32
Social Work									
BS Social Work	29	27	2	-	1	-	-	-	28
Telecommunications									
MA Telecommunications	24	10	14	2	1	1	-	3	17
University Total	4846	2807	2039	251	485	193	17	193	3707

*Degree program is being phased out and no longer accepts new students.

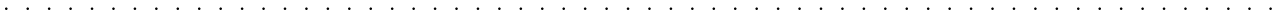


Table 4.1

TOTAL UNIVERSITY PERSONNEL BY JOB CLASSIFICATION

FALL 1992 THROUGH 1996

	1992	1993	1994	1995	1996	Avg % of Change * 1992-96
Instructional and Research						
Full-Time Faculty	665	707	742	760	765	3.6%
Part-Time Faculty	449	556	504	516	543	5.5%
Graduate Assistants	423	456	423	446	475	3.1%
Total	1,537	1,719	1,669	1,722	1,783	3.9%
Administrators and Staff						
Administrative Faculty	253	285	289	280	304	4.9%
Professional/Technical	371	421	449	409	471	6.6%
Office/Clerical	221	214	208	158	152	-8.5%
Skilled/Service	182	190	194	180	175	-0.9%
Total	1,027	1,110	1,140	1,027	1,102	2.0%
Faculty and Staff Total	2,564	2,829	2,809	2,749	2,885	3.1%
Temporaries	1,282	1,380	1,432	1,641	1,619	6.2%
Total w/Temporaries**	3,846	4,209	4,241	4,390	4,504	4.1%

*Average annual growth rate.

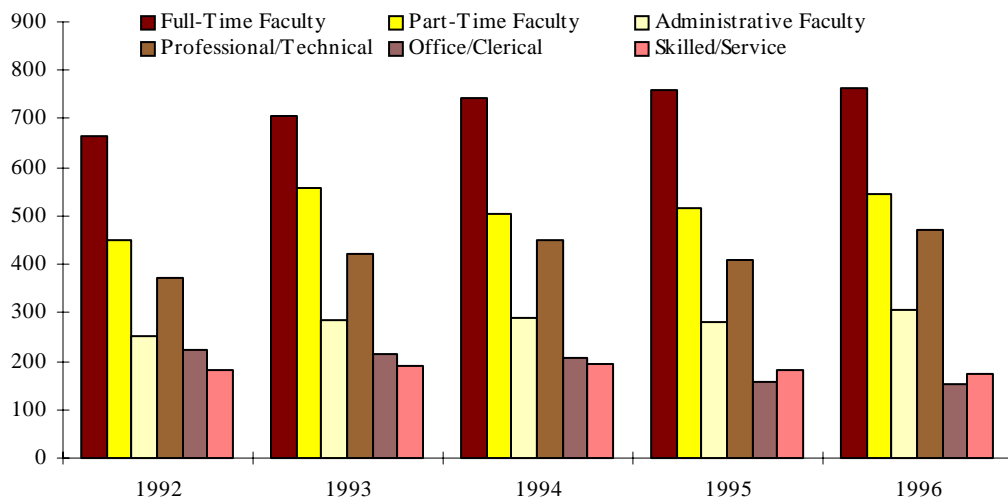
**Includes wage employees and student wages, excludes college work study.

Note: The university president is included in administrative faculty.

Figure 4.1

PERSONNEL BY CLASSIFICATION

FALL 1992 THROUGH 1996



faculty & staff

Table 4.2
**UNIVERSITY PERSONNEL FTE AND HEADCOUNT
 BY GENDER AND MEAN AGE
 FALL 1996**

	Total FTE	Total Headcount	No. Female	% Female	No. Male	% Male	Mean Age
Instructional and Research							
Full-Time Faculty	760.0	765	262	34.2%	503	65.8%	48.4
Part-Time Faculty	176.0	543	261	48.1%	282	51.9%	44.0
Graduate Assistants	52.3	475	218	45.9%	257	54.1%	30.5
Subtotal	988.3	1783	741	41.6%	1,042	58.4%	42.3
Administrators and Staff							
Administrative Faculty	298.2	304	165	54.3%	139	45.7%	45.1
Professional/Technical	461.6	471	307	65.2%	164	34.8%	41.9
Office/Clerical	143.9	152	134	88.2%	18	11.8%	41.4
Skilled/Service	175.0	175	26	14.9%	149	85.1%	41.1
Subtotal	1078.7	1,102	632	57.4%	470	42.6%	42.6
Faculty & Staff Total	2067.0	2,885	1,373	47.6%	1,512	52.4%	42.4

Table 4.3
**ETHNIC DISTRIBUTION OF UNIVERSITY PERSONNEL
 FALL 1996**

	Total	African American	Asian American	Hispanic American	Native American	Non-Res Alien	White American
Instructional and Research							
Full-Time Faculty	765	30	53	20	0	26	636
<i>% of total</i>		3.9%	6.9%	2.6%	0.0%	3.4%	83.1%
Part-Time Faculty	543	14	21	16	1	5	486
<i>% of total</i>		2.6%	3.9%	2.9%	0.2%	0.9%	89.5%
Graduate Assistants	475	20	32	11	1	141	270
<i>% of total</i>		4.2%	6.7%	2.3%	0.2%	29.7%	56.8%
Administrators and Staff							
Administrative Faculty	304	30	9	4	0	2	259
<i>% of total</i>		9.9%	3.0%	1.3%	0.0%	0.7%	85.2%
Professional/Technical	471	63	24	12	1	2	369
<i>% of total</i>		13.4%	5.1%	2.5%	0.2%	0.4%	78.3%
Office/Clerical	152	13	9	6	0	2	122
<i>% of total</i>		8.6%	5.9%	3.9%	0.0%	1.3%	80.3%
Skilled/Service	175	34	15	12	2	2	110
<i>% of total</i>		19.4%	8.6%	6.9%	1.1%	1.1%	62.9%
Faculty/Staff Total	2,885	204	163	81	5	180	2,252
<i>% of total</i>		7.1%	5.6%	2.8%	0.2%	6.2%	78.1%

Table 4.4
FULL-TIME INSTRUCTIONAL FACULTY
AGE AND YEARS OF SERVICE, BY RANK
FALL 1996

	Total	Age 29 or Less	Age 30-39	Age 40-49	Age 50-59	Age 60 or More	Mean Age	Mean Years of GMU Service
Professor	244	0	3	62	109	70	54.7	12.8
<i>% of total</i>		0.0%	1.2%	25.4%	44.7%	28.7%		
Associate Professor	289	0	37	120	111	21	48.9	11.7
<i>% of total</i>		0.0%	12.8%	41.5%	38.4%	7.3%		
Assistant Professor	143	3	76	39	21	4	40.9	4.2
<i>% of total</i>		2.1%	53.1%	27.3%	14.7%	2.8%		
Instructor	89	4	35	31	19	0	41.2	3.6
<i>% of total</i>		4.5%	39.3%	34.8%	21.3%	0.0%		
Total	765	7	151	252	260	95	48.3	9.7
<i>% of total</i>		0.9%	19.7%	32.9%	34.0%	12.4%		

Figure 4.2
FALL 1996 FULL-TIME INSTRUCTIONAL FACULTY
MEAN YEARS OF AGE AND SERVICE, BY RANK

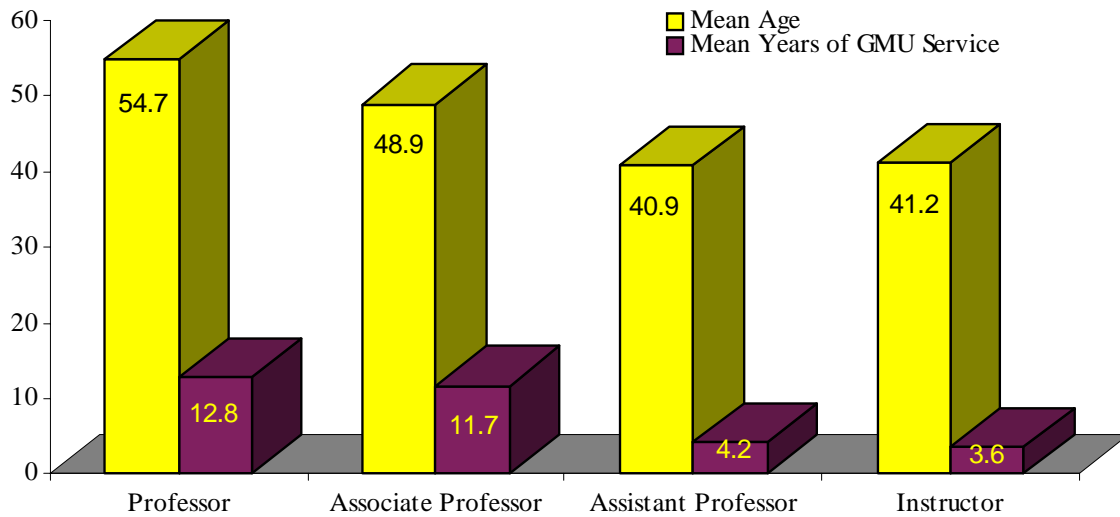


Table 4.5
FULL-TIME INSTRUCTIONAL FACULTY SALARY
ACADEMIC YEARS 1995-96 AND 1996-97

	1995-96 State Salary	1995-96 Total Salary	1996-97 State Salary	1996-97 Total Salary	% Change State Salary	% Change Total Salary
Professor	\$76,915	\$80,617	\$79,398	\$83,523	3.2%	3.6%
Associate Professor	55,502	55,502	\$57,124	\$57,124	2.9%	2.9%
Assistant Professor	43,912	43,912	\$45,323	\$45,323	3.2%	3.2%
Instructor	34,810	34,810	\$36,925	\$36,925	6.1%	6.1%
University Total	\$58,778	\$60,003	\$61,150	\$62,601	4.0%	4.3%

NOTE: All salaries have been converted to a 9/10 month contract equivalent and 1.0 FTE.

Figure 4.3
FULL-TIME INSTRUCTIONAL FACULTY AVERAGE SALARIES
(TOTAL SALARY WITH EMINENT SCHOLAR STIPEND)

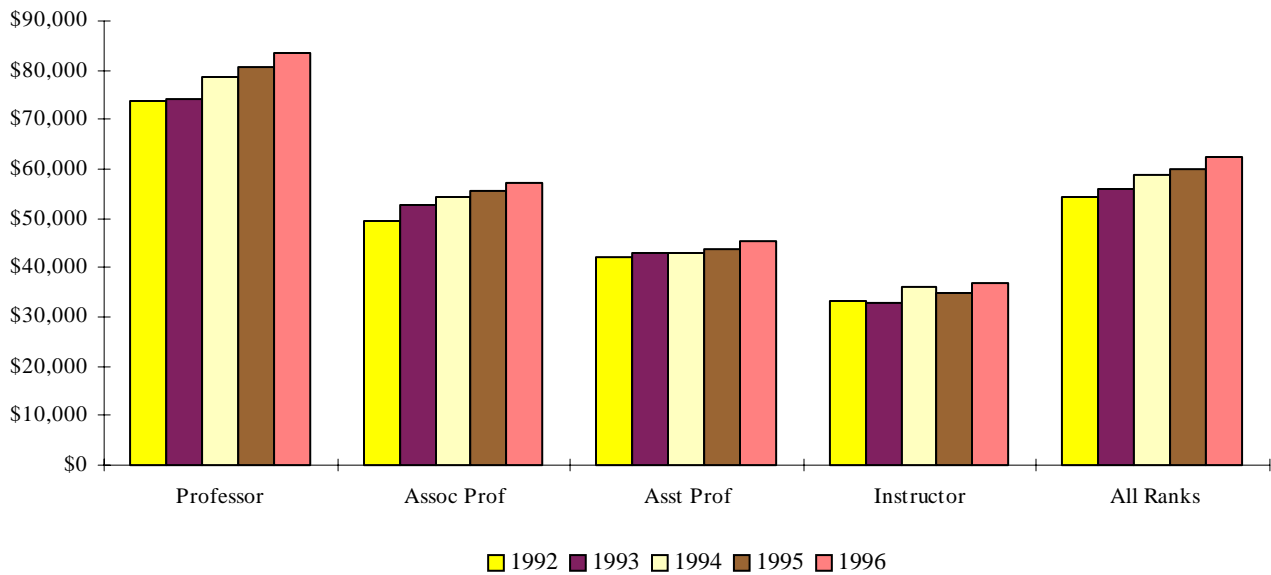


Table 4.6

FALL 1996 FULL-TIME FACULTY BY DIVISION/DEPARTMENT/RANK/TENURE STATUS/TYPE

Division	Department	Rank				Grand Total	Tenure Status			Type		% with Terminal Degree
		Prof	Assoc	Asst	Instr		Tenured	Prob	Restrict	Instr	Rsrch	
SCHOOLS AND COLLEGES												
CAS Total		118	164	65	30	377	269	31	77	368	9	90.5%
CAS	Art History	1	3	0	0	4	4	0	0	4	0	100.0%
	Biology	10	16	2	2	30	24	2	4	30	0	96.7%
	Chemistry	4	9	1	1	15	13	1	1	14	1	100.0%
	Communication	5	3	2	4	14	8	2	4	14	0	78.6%
	Cultural Studies	0	1	0	0	1	1	0	0	1	0	100.0%
	Economics	13	6	1	2	22	18	1	3	21	1	95.5%
	English	15	24	18	1	58	39	6	13	58	0	76.8%
	Foreign Languages and Literature	8	8	2	5	23	17	1	5	23	0	78.3%
	Geographic and Earth Sciences	1	2	6	0	9	3	3	3	9	0	100.0%
	History	5	14	6	3	28	19	3	6	27	1	96.4%
	Mathematical Sciences	7	16	1	2	26	23	1	2	26	0	92.0%
	Music	5	5	1	1	12	9	1	2	12	0	100.0%
	PAGE Program	0	1	0	0	1	1	0	0	1	0	100.0%
	Philosophy and Religious Studies	1	8	4	1	14	9	2	3	14	0	100.0%
	Physics and Astronomy	7	3	2	2	14	9	1	4	14	0	85.7%
	Psychology	9	18	6	1	34	23	3	8	31	3	94.1%
	Public/International Affairs	6	15	5	2	28	19	0	9	27	1	92.9%
	Robinson Professors	10	0	0	0	10	10	0	0	10	0	100.0%
	Shared Rsrch/Instrumentation Facility	1	1	0	2	4	1	0	3	2	2	50.0%
	Social/Organizational Learning	2	2	3	0	7	2	3	2	7	0	100.0%
	Sociology and Anthropology	8	9	5	1	23	17	1	5	23	0	95.7%
CNHS	Nursing	9	15	11	14	49	16	6	27	49	0	55.1%
GBI Total		8	7	9	2	26	11	5	10	26	0	92.3%
GBI	Accounting & Consulting SBA	1	0	0	0	1	1	0	0	1	0	100.0%
	Executive MBA	1	0	0	0	1	0	0	1	1	0	100.0%
	GBI Instruction	5	7	9	2	23	9	5	9	23	0	91.3%
	Technology Management	1	0	0	0	1	1	0	0	1	0	100.0%
SBA	SBA Undergraduate Program	11	10	7	4	32	21	3	8	32	0	81.3%
GSE Total		12	17	7	2	38	22	13	3	34	4	97.4%
GSE	GSE Instruction	12	15	7	2	36	22	11	3	32	4	97.2%
	Universal Teachers	0	2	0	0	2	0	2	0	2	0	100.0%
HUMAN SVCS Total		6	7	3	0	16	11	2	3	16	0	100.0%
HUMAN SVC	Health Sciences	4	6	1	0	11	8	2	1	11	0	100.0%
	Social Work	2	1	2	0	5	3	0	2	5	0	100.0%
Law	Law	13	7	5	0	25	17	6	2	25	0	100.0%
NCC	New Century College	0	0	0	2	2	0	0	2	2	0	50.0%
Centers & Institutes												
ICAR	Inst for Conflict Analysis & Resolution	6	1	3	1	11	3	4	4	9	2	72.7%
ICS&I	Inst for Comp. Sciences & Informatics	5	6	6	7	24	5	4	15	10	14	83.3%
INFO TECH Total		1	1	0	0	2	1	0	1	1	1	100.0%
INFO TECH	Information Technology & Support	0	1	0	0	1	0	0	1	0	1	100.0%
	Telecommunications	1	0	0	0	1	1	0	0	1	0	100.0%
Int'l Inst	International Institute	3	4	0	1	8	1	1	6	7	1	75.0%

Table 4.6 (continued)

FALL 1996 FULL-TIME FACULTY BY DIVISION/DEPARTMENT/RANK/TENURE STATUS/TYPE

Division	Department	Rank					Tenure Status			Type		% with Terminal Degree
		Prof	Assoc	Asst	Instr	Grand Total	Tenured	Prob	Restrict	Instr	Rsrch	
SCHOOLS AND COLLEGES												
IOA Total		0	4	7	0	11	2	1	8	11	0	100.0%
IOA	CVIT	0	0	1	0	1	0	0	1	1	0	100.0%
	Dance	0	1	1	0	2	1	0	1	2	0	100.0%
	Institute of the Arts	0	1	0	0	1	0	0	1	1	0	100.0%
	Studio Art	0	2	1	0	3	1	0	2	3	0	100.0%
	Theatre	0	0	4	0	4	0	1	3	4	0	100.0%
SITE Total		36	39	15	6	96	59	16	21	75	21	93.8%
SITE	Applied & Engineering Statistics	3	4	0	0	7	7	0	0	7	0	100.0%
	C3I Center	0	2	3	2	7	0	0	7	0	7	57.1%
	Center for Machine Learning/Inference	0	0	1	0	1	0	0	1	0	1	100.0%
	Computer Science	8	6	6	1	21	13	6	2	18	3	100.0%
	Electrical and Computer Engineering	8	11	3	1	23	17	3	3	20	3	100.0%
	Info & Software Sys Eng	4	5	2	0	11	8	3	0	11	0	100.0%
	Operations Research Engineering	8	0	0	0	8	7	0	1	8	0	100.0%
	SITE Dean	2	2	0	1	5	2	0	3	3	2	60.0%
	Systems Engineering	3	9	0	1	13	5	4	4	8	5	92.3%
Stdnt Svcs	Intercultural Services	0	0	0	8	8	0	0	8	8	0	0.0%
TIPP Total		12	4	1	9	26	10	0	16	8	18	53.8%
TIPP	CTR For Advance Of Public Health	0	2	0	0	2	0	0	2	0	2	100.0%
	CTR For Int'l Trade Policy	1	0	0	0	1	1	0	0	1	0	100.0%
	Institute of Public Policy	10	2	1	8	21	9	0	12	7	14	47.6%
	Regional Research Center	1	0	0	1	2	0	0	2	0	2	50.0%
Other Programs												
President	Krasnow Institute	0	0	1	2	3	0	0	3	0	3	0.0%
Provost Total		2	0	0	1	3	2	0	1	2	1	100.0%
Provost	Graduate Administration	0	0	0	1	1	0	0	1	0	1	100.0%
	Provost's Office	2	0	0	0	2	2	0	0	2	0	100.0%
PWI Total		2	3	3	0	8	1	1	6	7	1	75.0%
PWI	IET - Prince William Institute	1	2	3	0	6	1	1	4	5	1	83.3%
	Prince William Institute Admin	1	1	0	0	2	0	0	2	2	0	50.0%
Grand Total		244	289	143	89	765	451	93	221	690	75	85.9%

Figure 4.4
FALL 1996 FULL-TIME FACULTY BY TENURE STATUS

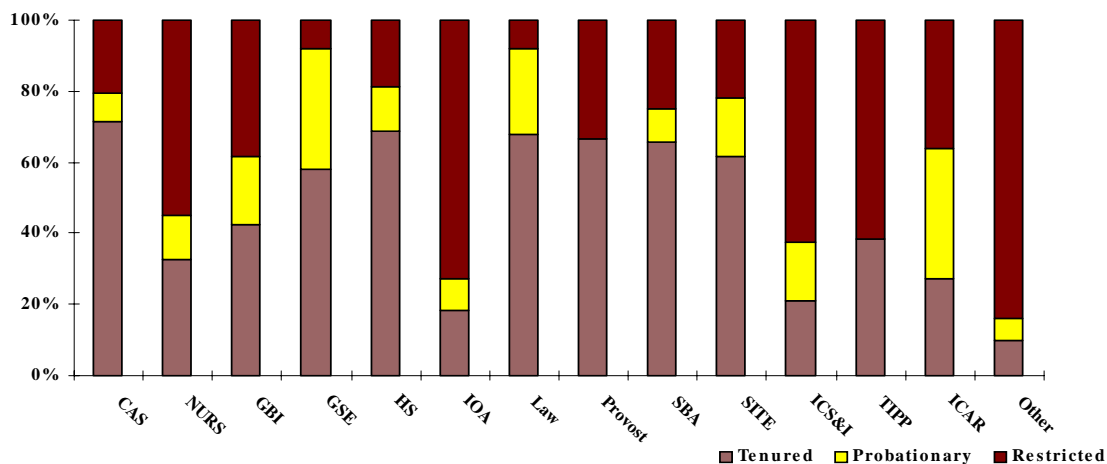


Table 4.7

DISTINGUISHED FACULTY -- ACADEMIC YEAR 1996-97**ENDOWED CHAIRS AT GEORGE MASON UNIVERSITY**

Evan E. Anderson	GMU Foundation Professor of Decision Sciences and MIS
Robert A. Anthony	GMU Foundation Professor of Law
Richard C. Bausch	Heritage Chair in Writing
James T. Bennett	William P. Snavely Professor of Political Economy and Public Policy
James M. Buchanan	Holbert L Harris University Professor of Economics
Stephen D. Burton	Heritage Chair in Music
Kevin P. Clements	The Vernon M. and Minnie I. Lynch Professor of Conflict Resolution
Gerald Cook	Earle C. Williams Professor of Information Technology and Electrical Engineering
Michael G. Ferri	GMU Foundation Professor of Finance
Francis Fukuyama	Omer L. and Nancy Hirst Professor of Public Administration
Ernest Gellhorn	GMU Foundation Professor of Law
James T. Godfrey	GMU Foundation Professor of Accounting
Carl M. Harris	BDM Professor of Information Technology
Don E. Kash	The John T. Hazel, Sr., and Ruth D. Hazel Professor of Public Policy and Professor of Public and International Affairs
Jerome B. Kernan	GMU Foundation Professor of Behavioral Analysis, Department of Marketing
Don Lavoie	The David H. Koch and Charles G. Koch Professor of International Affairs
Seymour M. Lipset	The Virginia E. Hazel and John T. Hazel, Jr., Professor of Public Policy, Professor of Public Affairs, and Professor of Sociology
Ryszard S. Michalski	Planning Research Corporation Professor of Information Technology and Computer Science
Christopher R. Mitchell	Drucie French Cumbie Professor of Conflict Resolution
Timothy J. Muris	GMU Foundation Professor of Law
Vacant	LeRoy Eakin, Sr. Professor of Strategic Management
Larry E. Ribstein	GMU Foundation Professor of Law
Andrew P. Sage	First American Bank of Virginia Professor of Information Technology
Roger D. Stough	Northern Virginia Chair in Local Government
Robert D. Tollison	Duncan Black Professor of Economics
Harry L. Van Trees	George Mason Institute Professor of Electrical, Computer and Systems Engineering
Edward Villella	Heritage Chair in Arts and Cultural Criticism
Richard E. Wagner	Holbert L Harris University Professor of Economics
Edward J. Wegman	Bernard J. Dunn Professor of Information Technology and Applied Statistics
Walter E. Williams	John M. Olin Distinguished Professor of Economics
Ruth E. Zambrana	Elisabeth Shirley Enochs Chair in Child Welfare
Vacant	Sydney S. Dewberry Chair for Civil Environment and Infrastructure

EMERITUS FACULTY

Alice C. Andrews	Associate Professor Emerita of Geography
Marjory Brown Azarowicz	Professor Emerita of Education
Barry K. Beyer	Professor Emeritus of Education
Henry J. Bindel, Jr.	Professor Emeritus of Education
Larry Bowen	Dean Emeritus of the Graduate School of Education
Stephen J. Brown	Professor Emeritus of English
Mary Kay Cabell	Associate Professor Emerita of Mathematical Science
Ernest Cassara	Professor Emeritus of History
Evelyn E. Cohelan	Professor Emerita of Nursing
John Henry Cooper	Chair Emeritus Health, Sport, and Leisure Studies
Lloyd M. DeBoer	Dean Emeritus of the School of Business Administration
Stephen T. Early	Professor Emeritus of Government and Politics
Albert W. Edgemon	Professor Emeritus of Education

(table continues)

Table 4.7 (continued)

DISTINGUISHED FACULTY -- ACADEMIC YEAR 1996-97*(Emeritus Faculty)*

Edwin A. Fleishman	Professor Emeritus of Psychology
Arnald D. Gabriel	Professor Emeritus of Music
Helen S. Garson	Professor Emerita of English
Joseph B. Gittler	Professor Emeritus of Sociology
Thomas H. Hill	Professor Emeritus of Music
James L. Jackson	Professor Emeritus of English
Helen Jenkins	Professor Emerita of Nursing
George W. Johnson	President Emeritus, Professor Emeritus of English
Hazel W. Johnson-Brown	Professor Emerita of Nursing
Irving Kayton	Professor Emeritus of Law
Emelia-Louise Kilby	Professor Emerita of Health and Physical Education
Robert Charles Krug	Professor Emeritus of Chemistry
William H. McFarlane	Professor Emeritus of Philosophy
Mary S. Montebello	Professor Emerita of Education
Ralph N. Norvell	Dean Emeritus, School of Law
Josephine F. Pacheco	Professor Emerita of History
James D. Palmer	Professor Emeritus of Information Technology and Engineering
Anthony F. Palmieri	Associate Professor Emeritus of English
Conrad Philos	Professor Emeritus of Law
Coleman Raphael	Dean Emeritus, School of Business Administration
Mian M. Saeed	Associate Professor Emeritus of History
Andrew P. Sage	Founding Dean Emeritus School of Information Technology
Ben F. Sands, Jr.	Professor Emeritus of Management
Betty J. Schuchman	Associate Professor Emerita of Education
Carol J. Sears	Associate Professor Emerita of Education
David H. Shaefer	Associate Professor Emeritus of Electrical and Computer Science
William P. Snively	Professor Emeritus of Economics
Lorin A. Thompson	President Emeritus
Dorothy J. Walker	Professor Emerita of Nursing
C. Robert Walter, Jr.	Professor Emeritus of Chemistry
William Scott Willis	Professor Emeritus of French
Norman A. Yance	Associate Professor Emeritus of Religious Studies
George A. Zaphiriou	Professor Emeritus of Law

CLARENCE J. ROBINSON PROFESSORS

Vassily Aksyonov	Russian Literature and Writing
Shaul Bakhsh	History
Mary Catherine Bateson	Anthropology and English
Paul D'Andrea	Theater and English
Jean-Paul Dumont	Anthropology
Robert M. Hazen	Earth Science
Hugh Hecló	Public Affairs
Thelma L. Lavine	Philosophy and American Culture
Harold J. Morowitz	Biology and Natural Science
John N. Paden	International Studies
James S. Trefil	Physics
Egon Verheyen	Humanities
Lenore J. Weitzman	Sociology and Law
Roger W. Wilkins	History and American Culture

(table continues)

Table 4.7 (continued)

DISTINGUISHED FACULTY -- ACADEMIC YEAR 1996-97**UNIVERSITY PROFESSORS**

Larry S. Bowen	Education and Public Policy
Arthur W. Chickering	Education
James E. Gentle	Computational Statistics
Kingsley E. Haynes	Public Policy
Menas Kafatos	Interdisciplinary Science
Henry G. Manne	Law
Andrew P. Sage	Information Technology and Engineering
Edgar H. Sibley	Information Systems and Systems Engineering
Valery N. Soyfer	Molecular Genetics
John N. Warfield	Center for Advanced Study in the Integrative Sciences

VIRGINIA COMMONWEALTH PROFESSORS

Frieda Butler	College of Nursing and Health Science
Charlene Douglas	College of Nursing and Health Science
Lawrence Washington	College of Nursing and Health Science

Table 4.8

**SCHEV PEER LIST FOR GEORGE MASON UNIVERSITY
1998-2000**

Rank	Institution
1	George Mason University
2	Wayne State University
3	University of Louisville
4	University of Wisconsin-Milwaukee
6	University of Oklahoma, Norman Campus
7	Temple University
8	University of New Mexico, All Campuses
9	Syracuse University, Main Campus
10	University of South Florida
11	University of Utah
12	University of Pittsburgh Main Campus
14	University of Connecticut
15	Loyola University of Chicago
16	University of Missouri, Kansas City
17	University of Tennessee at Knoxville
19	University of Cincinnati
22	University of South Carolina at Columbia
28	SUNY-Albany
30	University of Rhode Island
31	University of Kentucky
32	Western Michigan University
35	University of Kansas, Main Campus
36	University of Iowa
44	SUNY-Buffalo
47	Georgia State University



Budget and Finance

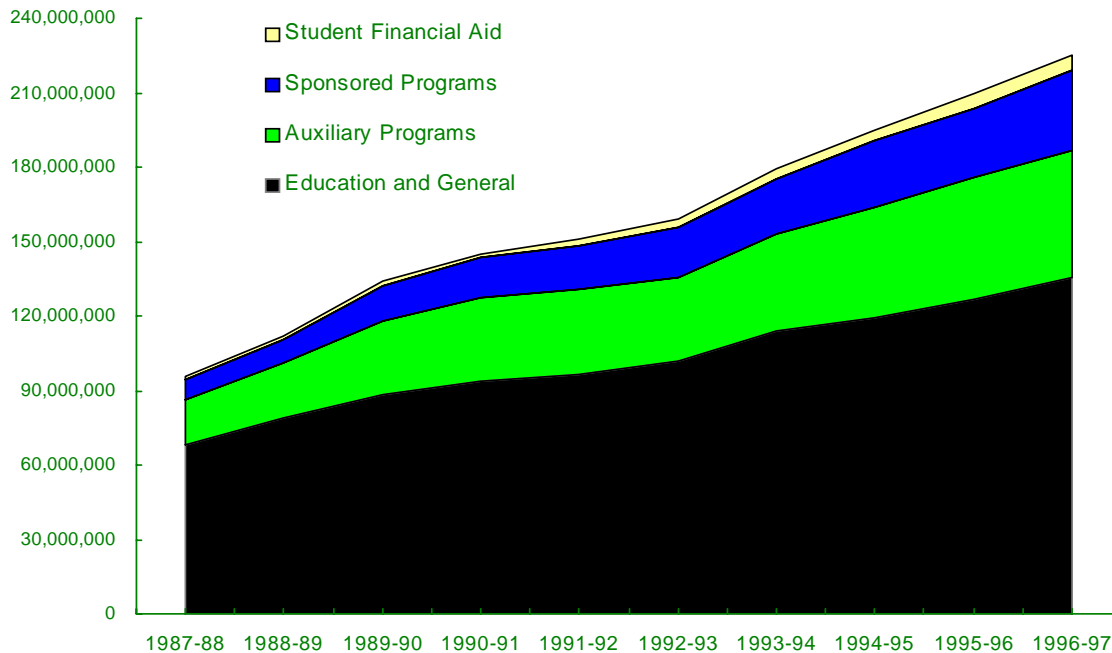
OVERVIEW

This chapter describes the financial and physical resources of George Mason University (GMU). Tables and figures illustrate the university's growing operating budgets in the Educational and General (E&G) Fund and Auxiliary Enterprises Fund as well as the area of Sponsored Programs.

GMU's operating financial resources are budgeted in four major operating funds: Educational and General (E&G) Programs, Auxiliary Enterprises, Student Financial Assistance, and Financial Assistance to E&G Programs (Sponsored Programs). Figure 5.1 shows the continuing growth of George Mason's total operating budgets from \$90 million in fiscal year 1987-88 to \$249 million in fiscal year 1996-97.

As an agency of the commonwealth of Virginia, GMU is funded, in part, through a biennial appropriation developed and approved by the General Assembly and the Governor. The fiscal year 1996-97 budget is in the first year of the current biennium. State appropriations authorize both spending and employment limits. The state's authorization for the maximum employment level for GMU in 1996-97 is 2,612.01 FTE, of which 82% are authorized within the E&G Programs. The current maximum employment level (MEL) is a net increase of almost 7%, or 170 FTE, over last year's MEL. These additional positions were authorized during the legislative session to support enrollment growth, the operations and maintenance of new facilities, and other staffing needs. In addition to appropriated operating funds, the state allots funds to George Mason on a project-by-project basis for capital improvements and constructions of facilities.

Figure 5.1
GMU OPERATING BUDGETS BY FUND
FISCAL YEARS 1987-88 THROUGH 1996-97



budget & finance

Educational and General Fund

The Educational and General (E&G) Fund is the largest component of the total university operating budget at \$135.5 million for the fiscal year 1996-97. Its seven major programs consist of instructional and institution-based research activities and services that support instructional programs. The following tables and figures describe revenue sources and expenditure plans by program area for the fiscal year 1996-97 E&G Fund.

The largest single source of funds for E&G is student tuition. This continues the trend begun in 1993-94, as the state general appropriation is no longer the largest source of funding. The student tuition revenue in 1996-97 makes up 48.6% of the total funding for E&G while the state appropriation is 47.6% of the funding and other state support and other fees make up 3.8% of the total funding. Figure 5.3 shows the current trends of revenue by source.

Within the E&G Fund, the sub-program of Instruction, which also includes institution-based research, utilizes 57.1% of the available resources. Other academic sub-programs including the Libraries, Academic Support and Student Services utilize 22.7%. The remaining 20.2% is utilized for Institutional Support and Physical Plant support. Approximately 82% of the budget is spent on salaries, wages and employee benefits, with the remaining 18% on non-personnel expenses including library reference materials, utilities, space rental, supplies, equipment contractual services, and other than personal services expenses (OTPS).

Table 5.1
E&G EXPENDITURES BY PROGRAM AREA
FISCAL YEARS 1993-94 THROUGH 1996-97

	1993-94	% of	1994-95	% of	1995-96	% of	1996-97	% of
	Actual	Total	Actual	Total	Actual	Total	Budget	Total
Instruction	61,624,744	54.09%	64,629,030	54.10%	73,283,751	57.80%	77,435,384	57.14%
Public Service	376,427	0.33%	915,478	0.77%	790,593	0.62%	952,100	0.70%
Libraries	6,701,451	5.88%	7,505,567	6.28%	9,364,565	7.39%	9,358,200	6.91%
Academic Support	7,036,638	6.18%	9,553,795	8.00%	7,633,318	6.02%	14,177,600	10.46%
Student Services	5,544,099	4.87%	5,793,590	4.85%	6,440,949	5.08%	6,236,175	4.60%
Institutional Support	22,108,476	19.41%	19,659,150	16.46%	18,711,690	14.76%	14,986,130	11.06%
Physical Plant	10,535,872	9.25%	11,405,115	9.55%	10,567,466	8.33%	12,366,300	9.13%
Total	113,927,707	100.00%	119,461,725	100.00%	126,792,332	100.00%	135,511,889	100.00%
Percent Increase			4.86%		6.14%		6.88%	

Figure 5.2
E&G FUND PROJECTED EXPENDITURES FISCAL YEAR 1996-97

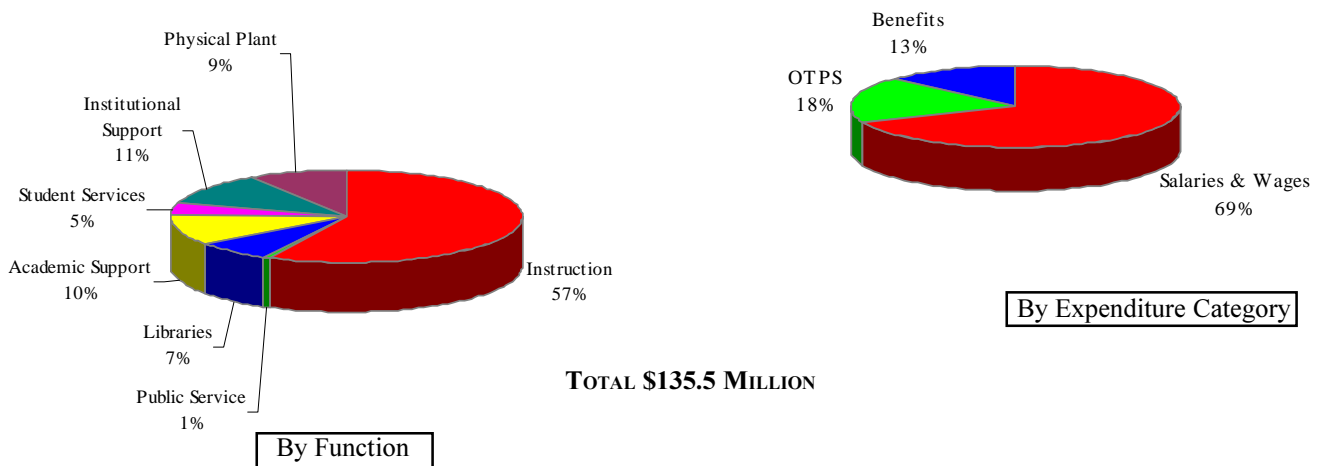


Table 5.2
E&G FUND REVENUES BY SOURCE
FISCAL YEARS 1993-94 THROUGH 1996-97

	Actual 1993-94	Actual 1994-95	Actual 1995-96	Budget 1996-97
General Fund State Appropriation	\$52,485,714	\$53,987,253	\$57,400,967	\$64,508,264
State Appropriation	52,145,987	53,347,225	56,531,784	63,906,953
Equipment Trust Fund Lease Payment	339,727	640,028	869,183	601,311
Non-General Fund State Appropriation	61,443,877	65,476,950	69,394,986	71,003,625
Higher Education Operating Revenues	57,677,680	60,926,451	65,105,628	66,566,900
Tuition	57,143,790	60,296,365	64,471,437	65,916,900
Admission/Graduation Fees	533,890	630,086	634,191	650,000
Other	3,766,197	4,550,499	4,289,358	4,436,725
Clinics/Fees	178,928	163,665	129,966	122,500
Public Service/Community Education	610,628	933,901	909,613	950,200
Indirect Cost Reimbursement	781,130	1,067,101	1,067,101	1,250,000
Miscellaneous	1,098,926	1,323,567	1,088,013	1,165,525
Equipment Trust Fund Reimbursement	307,661	226,162	171,387	100,000
English Language Institute	788,924	836,103	923,278	848,500
Total E&G Revenues	\$113,929,591	\$119,464,203	\$126,795,953	\$135,511,889

Figure 5.3
E&G FUND REVENUE TRENDS BY SOURCE
FISCAL YEAR 1990-91 THROUGH 1996-97

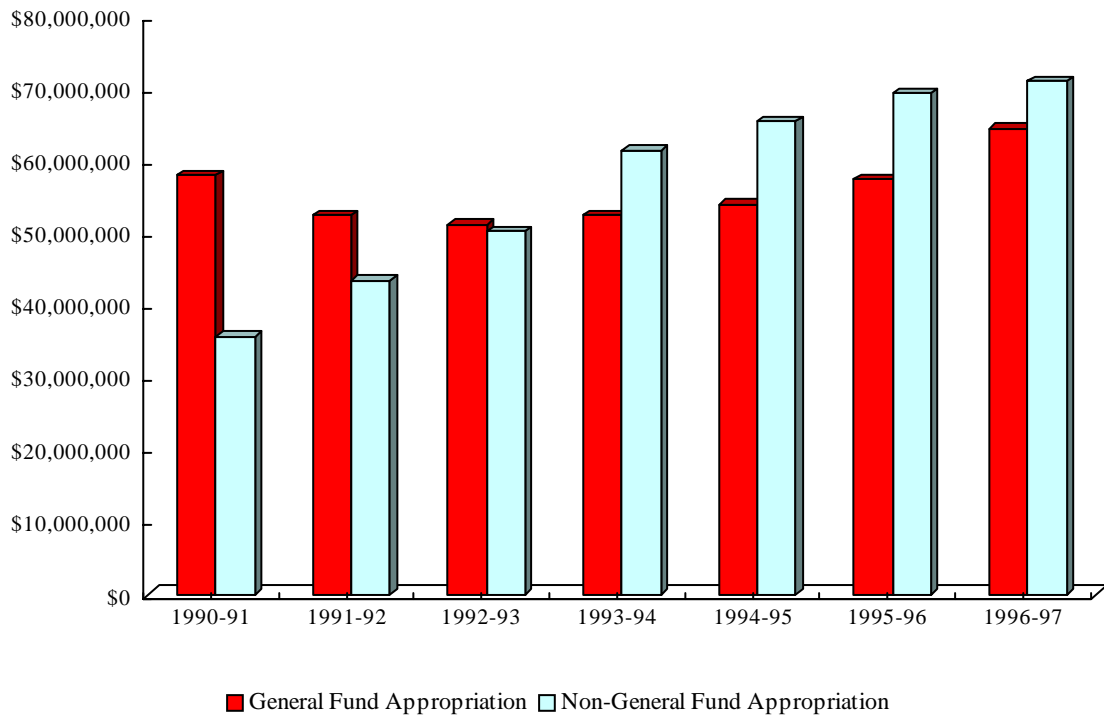


Table 5.3
**1996-97 E&G BASE BUDGET
SUMMARY BY MAJOR UNIT**

Unit	Personal Services	OTPS	Total FTE	Budget	Percent of Total
College of Arts & Sciences	31,062,400	1,124,300	565.45	32,186,700	23.75%
Nursing/Health Sciences	3,759,900	145,100	69.03	3,905,000	2.88%
Graduate School of Education	4,165,100	104,900	79.60	4,270,000	3.15%
Human Services	1,226,800	49,400	23.00	1,276,200	0.94%
New Century College	1,136,100	205,500	25.50	1,341,600	0.99%
Info Tech/Engineering	8,600,700	359,100	120.20	8,959,800	6.61%
School of Law	5,042,400	1,251,800	70.20	6,294,200	4.64%
School of Business Admin.	3,254,500	157,900	47.50	3,412,400	2.52%
Summer	2,986,100	3,000	75.00	2,989,100	2.21%
Total Academic Units	61,234,000	3,401,000	1,075.48	64,635,000	47.70%
Conflict Analysis & Resolution	858,000	32,200	12.20	890,200	0.66%
Computational Sci./Informatics	1,550,400	127,100	19.87	1,677,500	1.24%
Graduate Business Inst	3,979,900	209,600	54.75	4,189,500	3.09%
International Institute	1,001,050	62,350	18.59	1,063,400	0.78%
Institute of the Arts	1,505,600	158,200	31.62	1,663,800	1.23%
Prince William Institute	1,681,200	293,500	25.50	1,974,700	1.46%
Institute of Public Policy	1,666,400	188,600	16.75	1,855,000	1.37%
Total Centers & Inst.	12,242,550	1,071,550	179.28	13,314,100	9.83%
Enrollment Management	3,149,500	658,350	65.75	3,807,850	2.81%
Student Services	2,573,050	239,700	55.25	2,812,750	2.08%
Continuing Education	615,650	458,300	12.25	1,073,950	0.79%
Instructional Support	1,774,500	940,168	0.00	2,714,668	2.00%
Information Technology	1,090,800	509,700	19.00	1,600,500	1.18%
Library	3,496,500	4,292,000	80.50	7,788,500	5.75%
Academic Administration	2,598,450	417,350	46.98	3,015,800	2.23%
Total Academic Support	15,298,450	7,515,568	279.73	22,814,018	16.84%
Contract Courses	462,900	246,200	20.00	709,100	0.52%
Total Academic Affairs	89,237,900	12,234,318	1,554.49	101,472,218	74.88%
Business Development	272,500	89,250	5.07	361,750	0.27%
UCIS	5,828,900	3,186,600	97.50	9,015,500	6.65%
EVP Admin/Security	1,810,900	281,400	39.00	2,092,300	1.54%
Plant/Facilities	5,694,800	7,695,400	155.00	13,390,200	9.88%
Total Administration	7,505,700	7,976,800	194.00	15,482,500	11.43%
Total Finance & Planning	5,035,000	1,573,200	106.61	6,608,200	4.88%
Total President	3,192,300	896,700	57.58	4,089,000	3.40%
Total Non-Academic	21,834,400	13,722,550	460.76	35,556,950	26.24%
Central	211,750	(1,729,029)	113.77	(1,517,279)	-1.12%
Total	111,284,050	24,227,839	2,129.02	135,511,889	100.00%
% of Total	82.1%	17.9%		100.0%	

AUXILIARY ENTERPRISES FUND

The Auxiliary Enterprises Fund, which represents approximately 22.7% of the University's operating budget, consists of enterprises that are not a formal part of the academic enterprise of the university, but support the overall development of students. Expenditures from the Auxiliary Enterprises Fund are supported by revenues generated through events, activities, sales of services, and student fees. State appropriated funds are not made available for Auxiliary Enterprises activities. Mandatory student fees provide 42% of the resources for the fiscal year 1996-97 Auxiliary Enterprises Fund. Other major revenue sources are room, board, and telephone payments from residential students, which total approximately 24.8% of all Auxiliary Enterprises resources for 1996-97.

In contrast to the E&G Fund, the nature of the Auxiliary Enterprises activities makes them less personnel-intensive. For 1996-97, 21% of expenditures are projected for salaries, wages, and benefits. Debt service on revenue bonds issued to construct facilities requires 23% of the current year budget, and OTPS and other expenses require 56% of the budget. Approximately 2.4%, or \$1,226,200 of the Auxiliary Enterprises operating budget has been allocated for operating, facility and general reserves. Of this amount, \$880,000 or 71.8% has been allocated for facility depreciation reserves in accordance with SCHEV guidelines.

Table 5.4

Auxiliary Enterprises Fund--Budgeted Revenues/Expenditures by Source
Fiscal Year 1996-97

	Student Fees	% of Total	Other Income	Total Revenue	Operating Expenses	Debt Service	Total Expense
"All University Card" System	\$122,400	0.57%	\$35,000	\$157,400	\$157,400	\$0	\$157,400
Auxiliary Administration	\$0	0.00%	\$0	\$0	161,800	0	161,800
Photo ID	72,300	0.34%	7,000	79,300	79,300	0	79,300
University Police/Escort Service	440,200	2.05%	0	440,200	440,200	0	440,200
Health Services	688,950	3.20%	288,000	976,950	952,950	0	952,950
Disabled Student Services	303,400	1.41%	7,500	310,900	310,900	0	310,900
Student Activities Administration	1,188,750	5.53%	0	1,188,750	1,188,750	0	1,188,750
Student Clubs and Organizations	1,034,400	4.81%	400,000	1,434,400	1,434,400	0	1,434,400
Summer Trans/Open/House/Orient	104,350	0.49%	345,000	449,350	449,350	0	449,350
Intercollegiate Athletics	4,899,300	22.79%	14,000	4,913,300	4,951,700	0	4,951,700
Intercollegiate Athletics Scholarships	275,000	1.28%	1,713,400	1,988,400	2,050,000	0	2,050,000
Athletic Facility Improvements	300,000	1.40%	0	300,000	300,000	0	300,000
Patriot Center	1,619,800	7.53%	0	1,619,800	372,400	1,247,400	1,619,800
Recreation Sports Complex	2,035,050	9.47%	40,600	2,075,650	1,592,550	483,100	2,075,650
Telecommunications Infrastructure	831,850	3.87%	0	831,850	317,750	514,100	831,850
Student Unions/University Center	3,358,700	15.62%	2,211,000	5,569,700	2,959,500	2,610,200	5,569,700
Institute of the Arts	2,804,850	13.05%	1,045,000	3,849,850	2,982,250	867,600	3,849,850
Student Housing	0	0.00%	9,156,750	9,156,750	5,354,250	3,802,500	9,156,750
Student Board	0	0.00%	3,420,000	3,420,000	3,410,000	0	3,410,000
"Mason Lines"	0	0.00%	425,950	425,950	295,950	0	295,950
GMU Pay Phones	0	0.00%	133,050	133,050	133,050	0	133,050
Campus Access	0	0.00%	3,761,650	3,761,650	2,008,050	1,580,500	3,588,550
Child Development Center	0	0.00%	322,000	322,000	306,800	0	306,800
Computer Store	0	0.00%	2,397,000	2,397,000	2,388,200	0	2,388,200
Hemlock Overlook/Bull Run Marina	0	0.00%	775,000	775,000	765,700	0	765,700
Krasnow Institute	0	0.00%	383,400	383,400	0	383,400	383,400
Print Services	0	0.00%	1,681,200	1,681,200	1,596,100	0	1,596,100
Facility Reserves	880,000	4.09%	0	880,000	880,000	0	880,000
Other Reserves	100,000	0.47%	0	100,000	100,000	0	100,000
Presidential Scholars	300,000	1.40%	0	300,000	300,000	0	300,000
Indirect Cost Charge	0	0.00%	0	0	1,100,000	0	1,100,000
Interest Income	0	0.00%	1,150,000	1,150,000	0	0	0
Central Reserve	138,700	0.65%	0	138,700	136,200	0	136,200
Total Auxiliary Enterprise Budget	\$21,498,000	100.0%	\$29,712,500	\$51,210,500	\$39,475,500	\$11,488,800	\$50,964,300
Percent of Total	41.98%		58.02%	100.00%	77.46%	22.54%	100.00%

Figure 5.4
AUXILIARY ENTERPRISES FUND
REVENUES AND EXPENDITURES
FISCAL YEARS 1989-90 THROUGH 1996-97

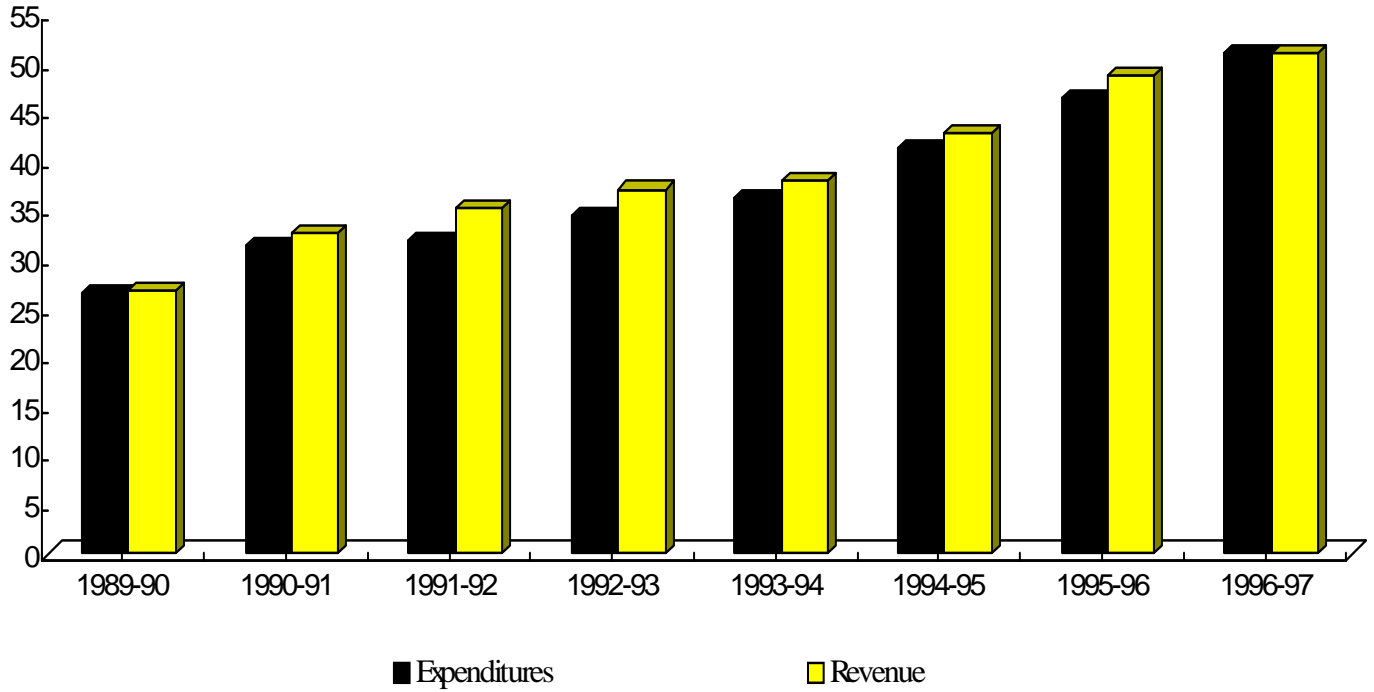
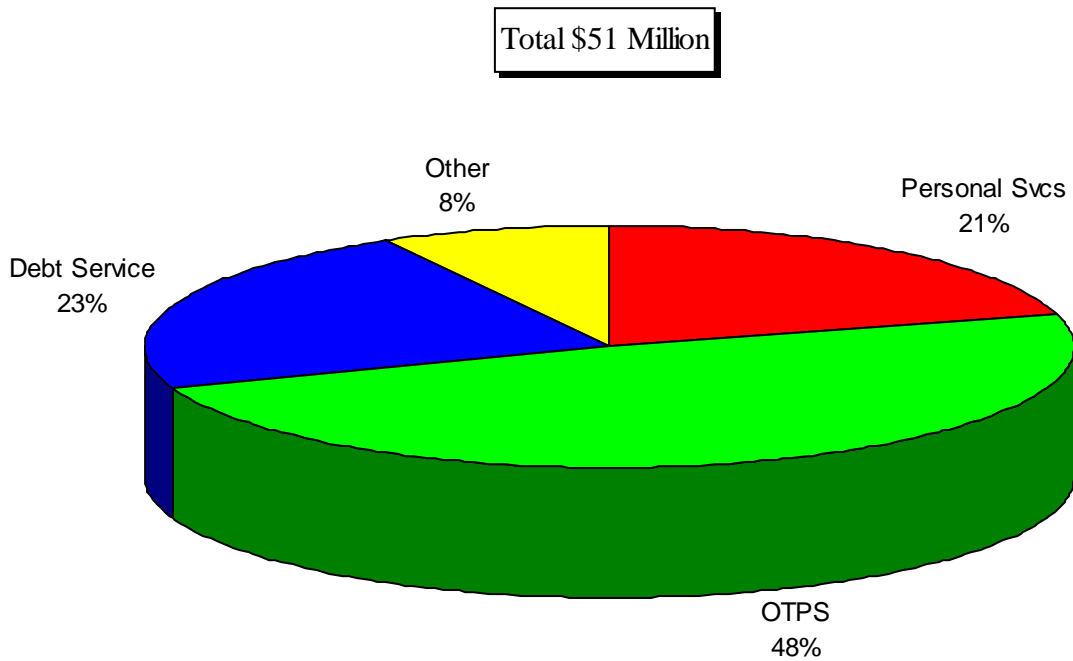
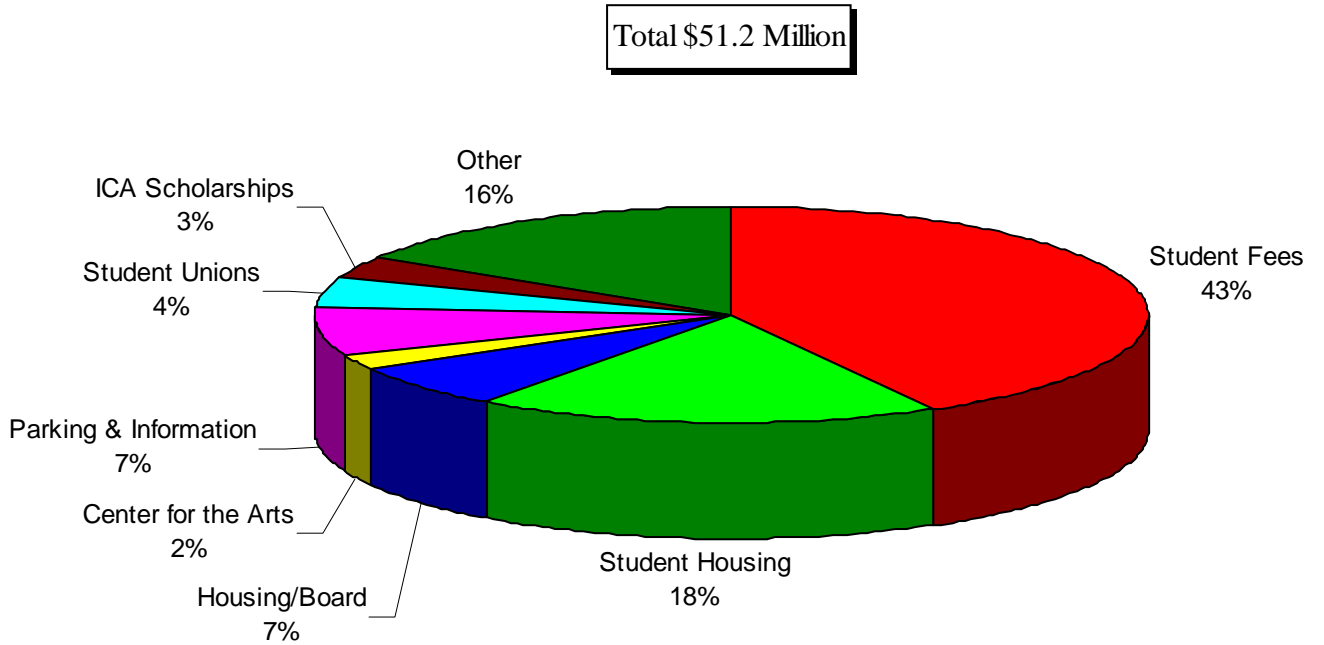


Figure 5.5
AUXILIARY ENTERPRISES FUND
BUDGETED REVENUES AND EXPENDITURES
FISCAL YEAR 1996-97



STUDENT TUITION AND FEES

The tuition and fees rates for a full-time student domiciled in Virginia is \$4,248 for the 1996-97 academic year. The rate for a full-time out-of-state student is \$11,952 exclusive of room and board. Law students domiciled in Virginia pay a full-time rate of \$7,280 while the full-time for out-of-state Law students is \$17,948. A review of tuition and mandatory student fees rates over the past nine academic years is provided below.

Table 5.5
TUITION AND FEES RATES OF FULL-TIME STUDENTS
ACADEMIC YEARS 1988-89 THROUGH 1996-97

	Tuition			Total			
	In-State	Out-of-State	Fees	Per Credit		Per Credit	
				In-State	Hour	Out-of-State	Hour
1988-89	\$1,356	\$3,552	\$684	\$2,040	\$85.00	\$4,236	\$176.50
1989-90	1,464	4,248	828	2,292	95.50	5,076	211.50
Fall 1990	1,548	5,004	948	2,496	104.00	5,952	248.00
Spring 1991	1,668	5,364	948	2,616	109.00	6,312	263.00
1991-92	1,908	6,384	1,080	2,988	124.50	7,464	311.00
1992-93	2,256	7,524	1,080	3,336	139.00	8,604	358.50
1993-94	2,808	8,976	1,080	3,888	162.00	10,056	419.00
1994-95	2,892	9,648	1,152	4,044	168.50	10,800	450.00
1995-96	2,976	10,368	1,236	4,212	175.50	11,604	483.50
1996-97	2,976	10,680	1,272	4,248	177.00	11,952	498.00

Note: These rates do not apply to students in the School of Law, which has a separate tuition and fee schedule

Figure 5.6
FULL-TIME, IN-STATE TUITION AND FEE RATES
ACADEMIC YEARS 1988-89 THROUGH 1996-97

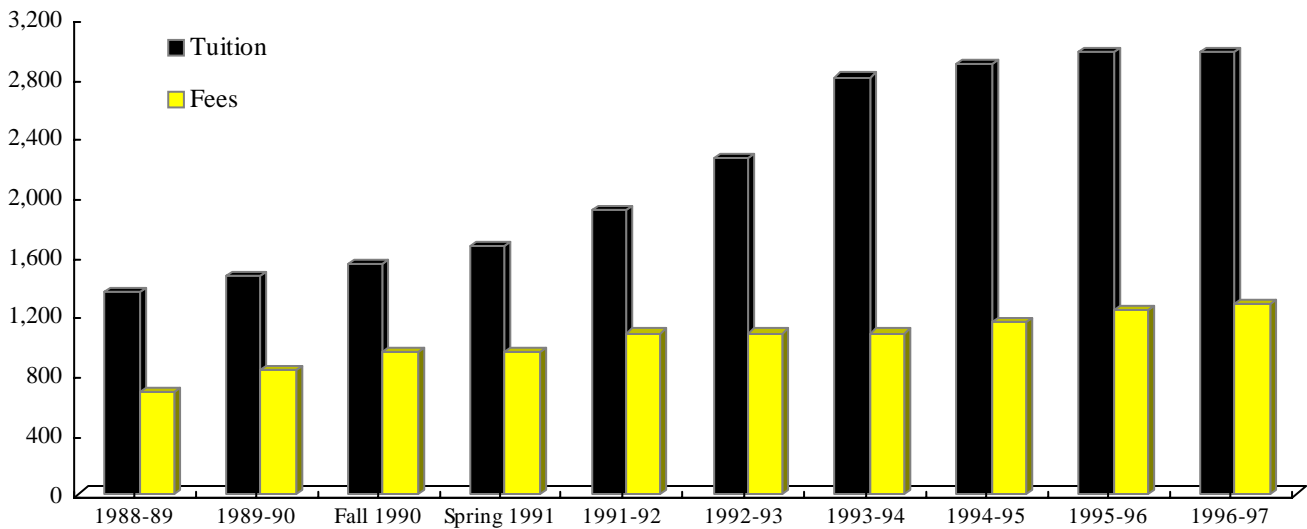


Table 5.6
CAMPUS BUILDINGS BY FIRST YEAR OF OCCUPANCY

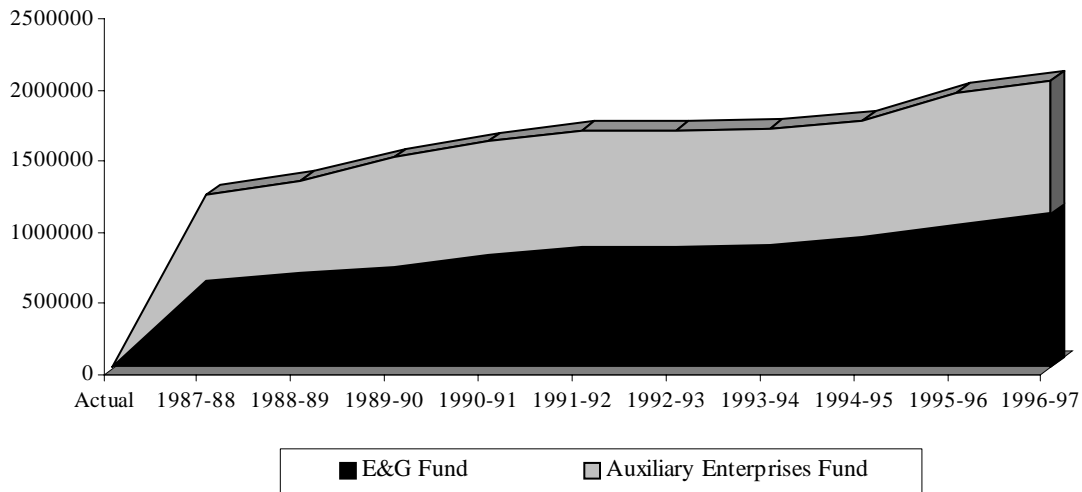
Year	Building	Gross Square Footage	Gross Replacement Value
1960	George's Hall	7,500	\$602,752
1964	East Building	13,110	1,197,751
1964	Finley Building	19,633	1,478,670
1964	Krug Hall	31,904	3,726,312
1964	Lecture Hall	7,998	739,204
1964	West Building	18,385	1,628,467
1967	Carty House	3,488	120,000
1967	Fenwick Library	140,600	14,131,312
1968	Development House	4,951	341,266
1968	Earie House	2,099	86,035
1968	Strong House	1,873	86,019
1968	Tallwood House	6,641	292,297
1971	Thompson Hall	71,957	6,187,221
1972	P.E. Building	61,440	4,343,005
1974	Biology Greenhouse	2,196	184,954
1974	Maintenance Building	12,002	672,175
1974	Student Union I	80,126	6,660,603
1975	Robinson Hall/Harris Theater	207,000	18,197,143
1976	Cooling/Heating Plant	9,195	2,952,105
1977	Student Housing (Apartment)	109,200	6,306,482
1980	Alumni House	2,452	*
1980	Mathy House	5,400	*
1980	Arlington Metro Center	131,272	11,268,553
1980	Telecommunications House	3,203	160,941
1981	Student Housing (Halls)	1,000,000	5,167,422
1982	Field House	115,376	6,482,376
1982	Information Booths	192	2,144
1982	King Hall	83,585	9,423,631
1982	Student Union II	90,875	9,452,347
1984	Trailers and Modules	61,052	4,563,828
1984	Student Housing (Patriot Village)	57,912	2,526,587
1985	Patriot Center	162,200	16,075,606
1986	Central Receiving Warehouse	15,000	*
1986	4260 Chain Bridge Road (Entrepreneurship Center)	10,000	*
1986	Student Housing (Commons)	101,380	8,713,593
1986	Student Housing (University Park)	40,383	*
1987	Science and Technology I	95,068	9,188,073
1988	Humanities I (Performing Arts)	81,900	7,532,338
1989	Commerce Building I	14,738	*
1989	Humanities II (Mason Hall, College Hall, Fine Arts)	101,333	10,100,000
1989	Providence Park	5,500	*
1989	Quincy Street Station (4th Floor)	9,368	*
1989	University Police Building	3,400	300,000
1989	Student Housing (Presidents Park)	97,126	7,999,998
1990	Commerce Building II	13,572	*
1990	Center for Innovative Technology (4th Floor)	8,000	*
1990	Housing IV	101,955	8,833,250
1990	Concert Hall	77,519	9,030,600
1991	Science and Technology II	96,596	7,600,000
1991	Prince William Institute	10,000	*
1992	Center for Innovative Technology (3rd Floor)	7,400	*
1993	Jennings Building	15,000	*
1995	Enterprise Hall	98,015	11,788,278
1996	Johnson Center	320,000	21,460,000
Total		2,948,070	\$237,603,338

*Rented through lease

Table 5.7
NET ASSIGNABLE SQUARE FOOTAGE BY FUND
FISCAL YEARS 1987-88 THROUGH 1996-97

	E&G Fund	Auxiliary Enterprises Fund	Total
Actual			
1987-88	605,174	607,888	1,213,062
1988-89	666,655	643,871	1,310,526
1989-90	712,444	763,289	1,475,733
1990-91	786,135	802,721	1,588,856
1991-92	846,100	815,700	1,661,800
1992-93	850,739	815,700	1,666,439
1993-94	861,968	815,700	1,677,668
1994-95	923,368	815,700	1,739,068
1995-96	1,000,348	928,870	1,929,218
1996-97	1,084,483	935,720	2,020,203

Figure 5.7
NET ASSIGNABLE SQUARE FOOTAGE BY FUND
FISCAL YEARS 1987-88 THROUGH 1996-97



Sponsored Programs, Development and Service Overview

This chapter presents excerpts from the annual reports of the Office of Sponsored Programs, the Development Office, and the university's Libraries. Sponsored Programs' sponsored research expenditures in fiscal year 1995-96 were \$28,014,859. This figure represents a 4% increase over fiscal year 1994-95. This success is the result of growth in several areas, including larger numbers of graduate, particularly doctoral students; a continued emphasis on faculty research; and the success of the research-oriented institutes. Figure 6.1 depicts the rise in sponsored research in recent years.

Table 6.1
SPONSORED PROGRAM ACTIVITY
PROPOSALS DEVELOPED, FUNDED AND ACTIVE
FISCAL YEARS 1990-91 THROUGH 1995-96

	1990-91	1991-92	1992-93	1993-94	1994-95	1995-96
Proposals Developed						
Number	360	459	520	615	637	627
Value	43,375,008	76,158,561	98,987,680	107,650,047	144,030,039	125,848,975
Proposals Funded						
Number	310	245	267	294	368	340
Value	16,874,327	13,073,840	18,201,045	21,871,592	29,687,035	22,419,032
Active Grants						
Number	775	750	790	759	817	832
Annual Expenditures	\$15,588,147	\$17,969,446	\$20,194,043	\$22,661,690	\$26,976,571	\$28,014,859

Figure 6.1
SPONSORED PROGRAMS EXPENDITURES
FISCAL YEARS 1998-89 THROUGH 1995-96



research & service

Table 6.2

SPONSORED PROGRAMS EXPENDITURES BY DEPARTMENT

	Active Accounts	Expenditures 1995-96
College of Arts and Sciences	4	\$94,813
Art and Art History	1	31,307
Associated Writing Programs	5	569,599
Biology	42	315,081
Chemistry	17	329,118
Communications	5	122,299
Center for Field Studies	1	653
Economics	11	438,352
English	8	111,496
Foreign Languages and Literature	1	24,868
Geography and Earth Systems Science	9	31,579
History	7	145,635
Mathematical Sciences	5	72,035
Music	4	28,410
Philosophy/Religious Studies	1	408,500
Physics and Astronomy	13	127,298
Psychology/Behavioral & Cognitive Studies	50	1,131,916
Public Affairs	6	224,934
Social & Organizational Learning Program	1	3,000
Sociology and Anthropology	8	159,083
<i>CAS Subtotal</i>	199	4,002,325
School of Business Administration	12	317,699
Graduate Business Institute	4	20,535
<i>SBA Subtotal</i>	16	338,234
School of Information Technology and Engineering	18	677,313
C3I Center	72	3,340,612
Computational Statistics Center	11	275,651
Computer Science	31	1,171,175
Electrical and Computer Engineering	45	924,299
Image Analysis Center	7	117,408
Information and Software Systems Engineering	8	436,478
Information Systems Integration Center	5	85,358
Operations Research Engineering	12	362,231
Regional Mobility Center	8	117,991
Secure Information Systems Center	9	286,416
Software Systems Engineering Center	5	184,249
Systems Engineering	21	383,168
<i>SITE Subtotal</i>	252	8,962,349
Graduate School of Education	40	1,996,317
Center for Human disAbilities	23	994,122
<i>GSE Subtotal</i>	63	2,990,439
School of Law	5	288,087
College of Nursing and Health Science	43	1,219,966
Computational Sciences Institute	17	896,622
Earth Observing and Space Research Center	22	801,533
<i>CSI Subtotal</i>	39	1,698,155
Public Policy Institute	64	3,770,097
Academic Affairs	13	330,498
Center for Professional Development	17	254,945

Table 6.2 (continued)

SPONSORED PROGRAMS EXPENDITURES BY DEPARTMENT		
	Active Accounts	Expenditures 1995-96
Early Identification Program	1	7,574
English Language Institute	1	639
Instructional Development Center	1	33,491
Krasnow Institute	2	298,862
Library	4	64,041
Market Processes Center	1	137,926
Minority Student Services	1	45
New Media Group	2	107,587
Student Services	1	98
<i>Academic Affairs Subtotal</i>	44	1,235,706
Administration	4	44,142
University Vice President		
Conflict Analysis and Resolution Institute	13	226,386
Institute for the Arts	1	5,619
International Institute	7	195,938
Institute for Educational Transformation	4	171,965
New Century College	3	46,727
<i>UVP Subtotal</i>	28	646,635
Executive	5	684,851
Entrepreneurship Center	61	1,674,944
GMU Foundation	3	495,737
<i>Executive Subtotal</i>	69	2,855,531
Finance and Planning	5	(46,936)
Institutional Planning and Research	1	10,128
<i>F&P Subtotal</i>	6	(36,808)
University Total	832	\$28,014,859

University Development

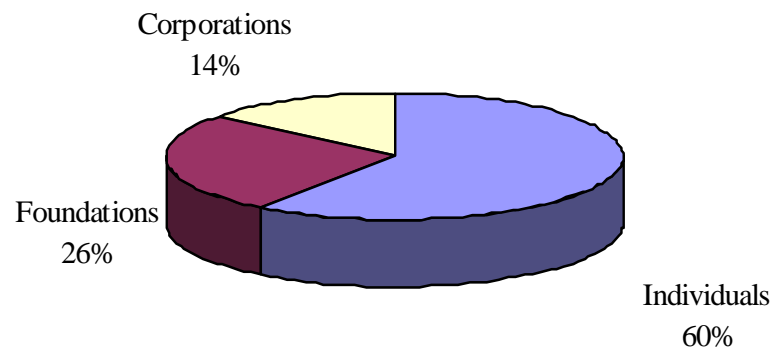
George Mason University has a diverse constituency of private supporters, reflecting many facets of the Northern Virginia community. Private support includes gifts from alumni, friends, faculty, staff, students, corporations, organizations, and private foundations. This support provides the university with resources to strengthen its various programs.

The GMU Foundation, established in 1966, is a private, nonprofit corporation and a 501(c)3 foundation operated exclusively to receive general philanthropy benefiting the university's programs. Gifts to the GMU Foundation, as well as gifts in memory of faculty, students or alumni, largely provide for eminent scholars, academic and athletic scholarships, resources for the libraries, equipment for research, and assistance for various departments.

In fiscal year 1995-96, the GMU Foundation received donations of \$9.8 million. The greatest proportion (60%) came from individuals; foundations provided 26% and corporations provided 14%.

Figure 6.2

GMU Foundation Donations, 1995-96



Library Resources

Library resources and services are housed in Fenwick Library and the George W. Johnson Center Library on the Fairfax Campus, in the Arlington Campus Library, Prince William Library, and the School of Law Library (Arlington). All of these facilities support faculty and student research. *Xlibris*, GMU's library information system, provides a public access catalog, on-line access to a variety of periodical indexes (some with full-text), the catalog of the Washington Research Libraries Consortium (WRLC), automated circulation, and in-house processing services. The library system can be used in the libraries, from campus locations on the network, or via modem from off-campus locations. The libraries also provide a wealth of bibliographic databases through a campuses-wide CD-ROM network as well as on individual workstations, in addition to maintaining a strong presence on the World Wide Web. GMU libraries' web sites offer nearly all of our information system components for use with web browsers, as well as a large amount of full-text database products purchased through the Virtual Library of Virginia (VIVA) initiative. Materials not held in the libraries can be obtained by direct borrowing from WRLC libraries, interlibrary loan through the international Online Computer Library Center (OCLC) database, or document delivery.

GMU Libraries have 82 full-time employees and approximately 200 part-time student assistants. Thirty-six percent of the full-time staff are professional librarians with graduate degrees in library science.

Fenwick's Special Collections and Archives contains more than 50 collections including the Robert Breen Theater Collection, the C. Harrison Mann Map Collection, the Ollie Atkins Photographic Collection, Planned Community Archives, the Alexander Haight Civil War and Prehistoric Collection, and the George Mason University Archives.

The GMU Law Library houses major research collections in the areas of law and economics, patent law, financial service law, and corporate law. Students and faculty have access to a variety of computer-based legal research systems including LEXIS/NEXIS and WESTLAW. The staff of the Law Library consists of eleven full-time staff, in addition to approximately 18 part-time employees.

Table 6.3

LIBRARY STATISTICS

FISCAL YEARS 1990-91 THROUGH 1995-96

	1990-91	1991-92	1992-93	1993-94	1994-95	1995-96
GMU Libraries						
Volumes Held	373,340	406,174	432,577	458,308	486,642	515,105
Physical Units of Microtext	701,797	798,109	919,108	1,009,005	1,099,584	1,193,700
Periodicals Received	3,500	4,357	4,782	5,279	5,732	6,314
U.S. Documents	256,564	260,862	477,823	486,911	492,946	500,503
Audiovisual Units	9,989	12,142	10,641	11,492	15,652	16,688
Circulations	249,500	249,628	287,927	268,718	310,470	338,041
Interlibrary Loan						
Borrowed	4,757	6,947	10,694	12,882	11,686	13,956
Loaned	6,237	8,548	9,955	12,091	13,473	17,255
Reference Questions	82,653	79,934	80,625	90,403	111,898	108,248
Law Library						
Volumes Held	182,257	174,026	170,537	176,976	186,276	194,908
Physical Units of Microtext	425,076	498,758	591,140	674,842	763,783	830,051
Periodicals Received	3,208	3,423	3,567	3,912	4,098	4,665
U.S. Documents	2,587	2,941	3,308	3,765	4,048	86,098
Interlibrary Loan Borrowed						
Borrowed	317	299	481	739	383	414
Loaned	1,046	998	833	1,128	1,403	945

*Includes holdings from Arlington, Fenwick, Johnson Center, Prince William Libraries



Terms and Definitions

ADMISSIONS, STUDENT ENROLLMENT AND ACADEMIC PROGRAM DATA

APPLIED/APPLICATIONS/APPLICANTS

The number of admission applications submitted for the reporting term. Individuals submitting multiple applications (e.g., applying for both an undergraduate and a graduate program, or more than one graduate program) are counted once for each application submitted; consequently, the count of graduate applied/applicants/applications may be greater than the number of individuals seeking admission to the university.

APPROVED/APPROVALS

The number of applications that resulted in an offer of admission into the applied-for program for the reporting term, including provisional admissions and other qualified admission statuses.

CERTIFICATE

A formal award certifying the satisfactory completion of a postsecondary program, but which does not qualify as a degree program.

CLASS LEVEL/STUDENT LEVEL

Undergraduate Degree-seeking:

- *Freshman*: A student who has fewer than 30 earned credit hours.
- *Sophomore*: A student who has 30-59 earned credit hours.
- *Junior*: A student who has 60-89 earned credit hours.
- *Senior*: A student who has at least 90 earned credit hours.

Graduate Degree-seeking:

- *Certificate*: A student whose primary program of study is one leading to a post-baccalaureate certificate.
- *Master's*: A student whose primary program of study is one leading to a master's degree.
- *Doctoral Pre-Candidate*: A student whose primary program of study is one leading to a doctoral degree who has not yet completed requirements for advancement to degree candidacy.
- *Doctoral Candidate*: A student whose primary program of study is one leading to a doctoral degree, who has met the university and departmental standards for advancement to degree candidacy. These standards normally include successful completion of all required course work and departmental candidacy examinations.

Professional (Law) Degree-seeking:

- Law students are classified as Law Day (full-time program) or Law Evening (part-time program) and by year in program, which is 1, 2, or 3 for Law Day students, and 1, 2, 3, or 4 for Law Evening student.

Non-Degree-seeking:

- Non-degree seeking students are classified only as undergraduate, graduate, or law, based on the level of the coursework being pursued.

CLASSIFICATION OF INSTRUCTIONAL PROGRAMS (CIP) CODE

Six-digit code that classifies instructional programs. The 1990 revision is the version currently in use.

CONTRACT COURSE

A course offered by contractual arrangement that is paid for as a unit rather than via tuition charges to individual students.

CREDIT HOUR

A unit of measure of course work, independent study, or a related activity, that can be applied toward meeting the requirements of a degree, certificate, or other formal award.

DEGREE-SEEKING STUDENT

A student enrolled in courses for credit who is recognized by the institution as seeking a degree or formal award.

ENROLLED/ENROLLEES

Students registered for more than zero credit hours on the census date for the reporting term. New enrollees approved for admission to multiple programs are counted only once, under the program designated as their primary program of study.

FIRST-TIME FRESHMAN

- *Admissions:* An applicant who has never attended any postsecondary institution since graduation from high school, or whose only postsecondary enrollment was in the summer term immediately prior to a fall applied-for term.
- *Student enrollment:* New students who qualify as first-time freshman admissions, including those with sufficient Advanced Placement credit to be granted sophomore class standing.

EXTENDED STUDIES

The enrollment program that serves nondegree-seeking students.

FULL-TIME-EQUIVALENT STUDENT (FTE)

A statistic derived from the student-credit hour productivity of the institution. In non-summer terms, the number of FTE students is obtained by dividing the total number of undergraduate, first professional (law), and graduate credit hours per term by 15, 15, and 12 respectively. The number of FTE students in summer, and annualized regular session (fall and spring semesters) is obtained by dividing the total number of undergraduate, first professional, and graduate credit hours per session by 30, 30, and 24 respectively. When student FTE is reported by academic division/department, the FTE is attributed to the department that administers the student's primary program of study. This definition should be distinguished from the definition of a full-time student.

FULL-TIME STUDENT

An undergraduate student enrolled for 12 or more credit hours in a term, a graduate student enrolled for 9 or more credit hours in a term, or a law student classified as a day student in a term.

GRADUATE STUDENT

A student enrolled in a master's, doctoral, or post-baccalaureate certificate program, not including law students. A nondegree-seeking

student enrolled in graduate-level classes is also considered a graduate student.

GUEST MATRICULANT

A student taking course work at George Mason and applying the credit toward a degree at another institution.

HEADCOUNT STUDENT

The number of students enrolled for more than zero credit hours in courses offered for degree or certificate credit, including students who are not admitted to a degree program (extended studies). When student headcount is reported by academic division/department, the headcount is attributed to the department that administers the student's primary program of study.

IN-STATE STUDENT

A student whose official domicile is in the commonwealth of Virginia.

LOWER DIVISION—BACCALAUREATE

- *Courses:* courses that are part of a baccalaureate program, generally taken by freshmen and sophomores, with course numbers in the range 100-299.
- *Students:* students classified as freshmen or sophomores (those with fewer than 60 earned credit hours).

NEW STUDENT

A student whose enrollment in the term is the consequence of an application for admission for the term.

NONDEGREE-SEEKING GRADUATE STUDENT

A student enrolled in graduate-level courses for credit who is not recognized as accepted into a degree or certificate program and who cannot be classified by student level.

NONDEGREE-SEEKING STUDENT

A student enrolled in courses for credit who is not recognized as seeking a degree or certificate.

NONDEGREE-SEEKING UNDERGRADUATE STUDENT

A student enrolled in undergraduate-level courses for credit who is not recognized as seeking a degree or certificate and who cannot be classified by student level.

NON-RESIDENT ALIEN

A person who is not a citizen or national of the United States and who is in this country on a visa or temporary basis and does not have the right to remain indefinitely. (Source: IPEDS)

OUT-OF-STATE STUDENT

A student whose official domicile is not the commonwealth of Virginia, and who therefore does not ordinarily qualify for in-state tuition rates.

PART-TIME STUDENT

An undergraduate enrolled for fewer than 12 credit hours in a term, a graduate student enrolled for fewer than 9 credit hours in a term, or a law student classified as an evening student in a term.

POST-BACCALAUREATE CERTIFICATE

An award that requires completion of an organized program of study beyond the level of a bachelor's degree, but which does not meet the requirements of academic degrees carrying the title of master.

PROGRAM/ACADEMIC PROGRAM

A combination of courses and related activities organized for the attainment of broad educational objectives.

RACE/ETHNICITY

Categories used to describe groups to which individuals belong or with which they identify. The categories do not denote scientific definitions of anthropological origins. A person may be counted in only one group. In official reporting only U.S. citizens and permanent residents (resident aliens) are grouped by race/ethnicity. The groups used to categorize all students are:

- African American/Black, Non-Hispanic
- American Indian or Alaskan Native
- Asian or Pacific Islander
- Hispanic
- White, Non-Hispanic
- Non-Resident Alien

RE-ADMITTED STUDENT

A student returning to the institution after an unofficial absence to resume a program of study, who has not attended another postsecondary institution during the absence, and whose re-enrollment requires formal approval. Formal approval to re-enroll is normally required after an unofficial absence of two-or-more non-summer terms, or after being formally dismissed. In most reporting, re-admitted students are counted among returning/continuing students. Students who attend another post-secondary institution during an unofficial absence are required to submit a complete application for admission, and are counted among new students.

RESIDENT ALIEN

A person who is not a citizen or national of the United States, and who has been lawfully admitted for permanent residence (and who holds alien registration receipt cards Form I-551/155). (Source: IPEDS)

RETURNING/CONTINUING STUDENT

A student whose eligibility to enroll in the term does not require the submission of a formal application for admission.

TRANSFER STUDENT

A student entering the institution for the first time or re-entering to resume a prior level, and known to have previously attended a postsecondary institution at the same level. A student who was dual-enrolled at a college or university while still enrolled in high school is counted as a first-time freshman, not as a transfer student.

UNCLASSIFIED STUDENT

A student whose enrollment cannot be classified by student level.

UPPER DIVISION—BACCALAUREATE

- *Courses:* courses that are part of a baccalaureate program, generally taken by juniors and seniors, with course numbers in the range 300-599.
- *Students:* students classified as juniors or seniors (those with at least 60 earned credit hours).

DEFINITIONS FOR FACULTY AND STAFF**ADMINISTRATIVE/PROFESSIONAL FACULTY**

Administrative/professional faculty perform work directly related to the administration, management, and support of the educational and general activities of the university. Incumbents in administrative faculty positions exercise discretion and independent judgement and generally direct the work of others. Professional faculty require advanced learning and experience acquired by prolonged formal instruction and/or specialized work experience. This category is normally limited to librarians, counselors, coaches, and other professional positions.

EMINENT SCHOLAR STIPENDS

Monies paid from GMU Foundation endowment funds and the State Eminent Scholars Matching Program to supplement the salaries of eminent full-time scholars such as the Robinson Professors.

FULL-TIME FACULTY

Full-time, instructional and research personnel holding the traditional ranks of professor, associate professor, assistant professor, and instructor. Designated as instructional or research faculty.

GRADUATE ASSISTANTS

Enrolled graduate students holding the positions of graduate teaching assistant or graduate research assistant. Traditionally, these positions are 20 hours per week.

INSTRUCTIONAL FACULTY

Faculty whose primary funding is from a ledger 1 instructional account and whose primary purpose is instruction. Most salary comparisons such as AAUP are based only on full-time, instructional faculty.

PART-TIME FACULTY

Part-time or adjunct faculty hired for instruction with semester or year-long contracts.

RESEARCH FACULTY

Faculty whose primary funding is from a research account and whose primary purpose is research.

RESTRICTED/FIXED TERM FACULTY

Faculty not eligible for tenure, hired under contracts of fixed terms.

PROBATIONARY/TENURE TRACK/TENURE STREAM FACULTY

Faculty eligible for, but not yet awarded tenure.

TENURED FACULTY

Faculty awarded appointments without a fixed term, with periodic review.

TERMINAL DEGREE

The highest earned degree in a discipline. In most cases, this is the doctorate (Ph.D./Ed.D.). In the fine arts, the M.F.A. or master's degree is considered the highest, appropriate degree. The J.D. in law is considered a professional degree.

CONTRIBUTING DATA SOURCES

Admissions Office

Budget Office

Center for Professional Development

Executive Vice President for Finance and Planning

Facilities Planning/Capital Outlay

Financial Aid Office

Fiscal Services

George Mason University Foundation

Human Resources

Information Management and Reporting Office

Institution of Graduate and Professional Business Studies Admissions

Institutional Assessment

Law Admissions

Office of Adult Learning and Professional Development

President's Office

Provost's Office

Registrar

State Council of Higher Education for Virginia (SCHEV)

Sponsored Programs Office

University Libraries

University Publications

University Relations

Vice President's Office

appendix

A GLIMPSE OF STUDENT ENROLLMENT

FALL CENSUS 1996

	Total		Course Load		Entry Status		Gender		Ethnicity				
	Head count	FTE	FT	PT	New	Return	Male	Female	Afric Amer	Asian Amer	Hispanic Amer	Native Amer	Non-Hispanic Other
UNDERGRADUATE													
Degree Seeking													
First Time Freshmen	1,953	1861.7	1,877	76	1,953	0	874	1,079	207	313	134	13	1,729
Other Lower Division	4,007	3383.4	3,159	848	927	3,080	1,764	2,243	380	639	278	19	1,950
Upper Division	7,332	5570.1	4,697	2,635	916	6,416	3,245	4,087	521	1,136	394	26	2,966
<i>Subtotal</i>	13,292	10815.1	9,733	3,559	3,796	9,496	5,883	7,409	1,108	2,088	806	58	4,615
Non Degree Seeking													
Concurrent H.S.	61	13.1	0	61	58	3	23	38	2	9	1	0	30
Extended Studies	412	133.5	20	392	296	116	169	243	45	34	20	3	175
Guest Matriculant	66	29.5	13	53	55	11	40	26	3	7	1	1	24
<i>Subtotal</i>	539	176.1	33	506	409	130	232	307	50	50	22	4	129
Total	13,831	10991.3	9,766	4,065	4,205	9,626	6,115	7,716	1,158	2,138	828	62	4,744
PROFESSIONAL													
Degree Seeking													
Law	691	594.5	374	317	218	473	440	251	25	32	4	2	392
GRADUATE													
Degree Seeking													
Masters	5,824	2877.9	1,455	4,369	1,808	4,016	2,458	3,366	320	419	179	11	3,044
Doctoral	1,254	550.5	265	989	240	1,014	734	520	81	92	28	3	1,074
<i>Subtotal</i>	7,078	3428.4	1,720	5,358	2,048	5,030	3,192	3,886	401	511	207	14	4,118
Non Degree Seeking													
Extended Studies	2,734	816.8	95	2,639	1,979	755	823	1,911	265	125	103	8	1,640
Guest Matriculant	34	13.2	4	30	27	7	17	17	2	6	1	0	14
<i>Subtotal</i>	2,768	830.0	99	2,669	2,006	762	840	1,928	267	131	104	8	1,654
Total	9,846	4258.4	1,819	8,027	4,054	5,792	4,032	5,814	668	642	311	22	5,173
Total Enrollment	24,368	15844.2	11,959	12,409	8,477	15,891	10,587	13,781	1,851	2,812	1,143	86	10,000
Percentage of Headcount	100.0		49.1	50.9	34.8	65.2	43.4	56.6	7.6	11.5	4.7	0.4	41.1
Fall 1995 Enrollment	24,172	15730.7	11,936	12,236	9,051	15,121	10,496	13,676	1,674	2,649	1,114	92	9,893
Percent Change	0.8		0.2	1.4	-6.3	5.1	0.9	0.8	10.6	6.2	2.6	-6.5	1.1

A GLIMPSE OF COURSE ENROLLMENT

FALL CENSUS 1996

	Lec/Sem		Lab/Rct/Stu		Credit Hours	Course FTE		FTE by Division of Students' Majors						
	Num Sects	Avg Size	Num Sects	Avg Size		Total	Pct.	CAS	SBA	GSE	SITE	LAW	NCC	NURS
CAS														
Undergraduate	972	37.4	305	20.7	116763.0	7763.2	49.9	4476.5	885.1	116.9	443.4		60.7	148.4
Graduate	245	15.9	15	12.8	12902.0	1000.8	6.4	644.1	2.8	22.8	3.9			5.8
Total	1,217	33.1	320	20.3	129665.0	8764.0	56.4	5120.7	887.9	139.6	447.3		60.7	154.2
SBA														
Undergraduate	118	47.0	10	74.9	17775.0	1185.0	7.6	50.1	1048.9	1.7	5.4		4.7	1.6
Graduate	54	27.4			4560.0	380.0	2.4	3.8	344.0	0.3	11.5			1.8
Total	172	40.9	10	74.9	22335.0	1565.0	10.1	53.9	1392.9	2.0	16.9		4.7	3.4
GSE														
Undergraduate	51	35.1	5	18.0	6140.0	408.4	2.6	46.6	1.8	251.2			0.4	5.9
Graduate	219	21.1			15236.0	1129.1	7.3	11.9		744.3				1.3
Total	270	23.7	5	18.0	21376.0	1537.5	9.9	58.5	1.8	995.5			0.4	7.1
SITE														
Undergraduate	76	44.1	58	20.1	10131.0	675.4	4.3	86.8	54.9	4.3	445.7		3.9	7.0
Graduate	104	23.9			8100.0	675.0	4.3	8.3	0.5		628.2			
Total	180	32.4	58	20.1	18231.0	1350.4	8.7	95.1	55.4	4.3	1074.0		3.9	7.0
LAW														
Professional	94	34.0			8951.0	596.7	3.8					594.5		
NCC														
Undergraduate	9	22.6			5141.0	342.7	2.2	22.5	5.0		0.8		303.2	0.4
NURS														
Undergraduate	44	25.8	37	10.5	4515.0	301.0	1.9	1.8			0.2			286.4
Graduate	33	14.5	8	6.6	1741.0	140.3	0.9	0.5	0.3	0.3				119.6
Total	77	21.0	45	9.8	6256.0	441.3	2.8	2.3	0.3	0.3	0.2			406.0
UIC														
Undergraduate	44	24.4	35	17.6	5237.0	345.5	2.2	106.4	14.7	3.6	2.9		3.8	5.8
Graduate	116	18.3	4	3.2	6372.5	517.3	3.3	10.3	136.4	3.7	1.9			0.8
Total	160	20.0	39	16.1	11609.5	862.8	5.5	116.7	151.0	7.3	4.8		3.8	6.6
OTHER														
Undergraduate	30	22.8	4	13.2	1045.0	68.0	0.4	27.4	5.8	0.9	3.5		1.7	1.6
Graduate	4	21.0			278.0	23.2	0.1			0.5				
Total	34	22.5	4	13.2	1323.0	91.1	0.6	27.4	5.8	1.4	3.5		1.7	1.6
UNIV TOTAL														
Undergraduate	1,344	37.3	454	20.6	166747.0	11089.3	71.3	4818.2	2016.2	378.6	901.9		378.3	457.1
Professional	94	34.0			8951.0	596.7	3.8					594.5		
Graduate	775	19.6	27	9.5	49189.5	3865.7	24.9	678.8	483.9	771.7	645.6			129.1
Total	2,213	31.0	481	20.0	224887.5	15551.7	100.0	5497.0	2500.1	1150.3	1547.5	594.5	378.3	586.2

CAS=College of Arts and Sciences
 SBA=School of Business Administration
 GSE=Graduate School of Education

SITE=School of Information Technology & Engineering
 LAW=School of Law
 NCC=New Century College

NURS=College of Nursing & Health Science
 UIC=University Institutes and Centers
 OTH=Other

