

**To Our Readers:**

This is the twenty-fifth edition of **George Mason University's Factbook**. Its purpose is to provide accurate and timely information about significant aspects of the university and its operations. The data presented in this Factbook includes the most current available for 1998-99 as well as pertinent historical information.

Changes to this edition of the Factbook include results from the Graduating Senior Surveys from the Office of Institutional Assessment.

Most of the information contained in the Factbook is extracted from administrative reports produced on an annual basis by various university offices. The expert assistance and cooperation received from individuals in offices supplying Factbook data are sincerely appreciated.

We hope that you find the Factbook both informative and useful. If you have any questions, comments or suggestions concerning the Factbook, please feel free to call or write us at anytime.

Dr. Maurice Scherrens, Senior Vice President  
Kathleen Cheney, Institutional Reports Coordinator

George Mason University  
Institutional Research and Reporting  
4400 University Drive, MSN 3D2  
Fairfax, Virginia 22030-4444  
(703) 993-8839

## TABLE OF CONTENTS

**GENERAL INFORMATION**

University Profile .....	5
History of the University .....	6
Mission Statement .....	8
Profile of Student Population, Programs and Facilities .....	9
Institutional and Professional Accreditation .....	10
SCHEV Approved Peer Group and Core Performance Measures .....	11
Endowed Chairs .....	13
Emeritus Faculty .....	14
Robinson, University and Commonwealth Professors .....	15

**ADMINISTRATION**

Organizational Chart .....	17
State Council of Higher Education for Virginia .....	18
Board of Visitors .....	19
University Administration .....	20
Deans & Directors, Chairs .....	21

**ADMISSIONS**

University Admissions Summary .....	25
New Enrollees by Residency Status .....	26
New Enrollees Demographic Characteristics .....	26
New Enrollees by Location of Last Institution Attended .....	27
Undergraduate Transfers from Virginia Institutions .....	28
New Enrollees by Academic Division .....	29
Student Financial Aid by Type of Award .....	30

**ENROLLMENT**

Trends in Student Demographics .....	33
Student Demographics by Academic Division .....	34
Undergraduate Student Enrollment by Academic Division .....	35
Graduate Student Enrollment by Academic Division .....	36
Law School Enrollment .....	36
Student Enrollment by Division, Department and Degree .....	37
Enrolled International Students by Country of Origin .....	44
Students in Housing .....	45

**DEGREES**

Degrees and Certificates Offered - CIP Codes and Year Initiated .....	47
Degrees and Certificates Awarded .....	51
Degrees and Certificates Awarded by Gender and Ethnicity .....	52
Institutional Assessment Graduating Seniors Survey Results .....	58

**FACULTY AND STAFF**

Total University Personnel by Job Classification .....	61
University Personnel by FTE and Headcount by Gender and Mean Age .....	62
University Personnel by Ethnic Distribution .....	62
Full-Time Instructional Faculty Age and Years of Service, by Rank .....	63
Full-Time Instructional Faculty Salary .....	64
Full-Time Faculty by Division/Department/Rank/Tenure Status .....	65
Comparison of AAUP Peer Faculty Salary Data .....	67

---

**TABLE OF CONTENTS**


---

**BUDGET**

1998-99 University Budget .....	69
E&G Expenditures by Program Area .....	70
E&G Fund Revenues by Source .....	71
E&G Base Budget Summary by Major Unit .....	72
Auxiliary Enterprises Budgeted Revenues/Expenditures by Source .....	74
Auxiliary Enterprises Fund Budgeted Revenues and Expenditures .....	75
Tuition and Fee Rates .....	76
Campus Building by First Year of Occupancy .....	77

**RESEARCH AND DEVELOPMENT**

Summary of Proposals by Sponsor .....	81
Summary of Proposals by Activity .....	81
Summary of Obligations for New Awards and Increments to Prior Awards by Sponsor .....	82
Summary of Obligations for New Awards and Increments to Prior Awards by Activity .....	82
Summary of Expenditures by Sponsor .....	83
Summary of Expenditures by Activity .....	83

**LIBRARIES**

University Libraries .....	85
Fenwick Library .....	85
Johnson Center Library .....	86
Arlington Campus Libraries: Quincy Street and Virginia Square .....	86
Prince William Campus Library .....	86
George Mason School of Law Library .....	87
Library Statistics .....	88

**APPENDIX**

Terms and Definitions .....	91
Glimpse of Student Enrollment .....	95
Glimpse of Course Enrollment .....	96

---



**UNIVERSITY PROFILE**

---

Located in Northern Virginia with the nation's capital nearby, George Mason University is in the mainstream of the political, artistic, and professional life of the country. Situated on 677 wooded acres near the City of Fairfax, the university's Fairfax Campus combines the quiet of a suburban setting with accessibility to Washington's libraries, galleries, and museums; Virginia's historic sites; and Fairfax County's high-technology firms. Metrorail, the Washington area's subway system, enables GMU riders to reach the U.S. Capitol in 35 minutes. It also provides a quick ride to GMU's 5.2-acre Arlington Campus, which houses the law school, a professional center, and a conference center. Its 124-acre campus in Prince William County offers academic, community, and business support programs.

The university's reputation for innovation results from its intent to be a world-class university built on a regional base. George Mason University is committed to meeting the needs of a highly sophisticated Northern Virginia community often characterized as a prototype of the high-tech, information/service-based economy of a post-industrial, knowledge-driven era.

George Mason University is a distinctive and diverse metropolitan teaching and research university that serves the national capital region. Understanding the needs of the region and the future development of the commonwealth, George Mason University is poised to meet the challenges of the approaching new century. The university is exploring new approaches to a variety of needs: new curricula for undergraduates, new advanced degrees supportive of the Information Age, new openings on the cutting edge of telecommunications, new arrangements between the corporate world and higher education, new ways to serve the region's network of urban centers, and new cooperative arrangements with state government agencies and the private sector. George Mason is committed to ensuring that each new program will meet the university's standard of excellence--a world-class teaching and research faculty for a region that demands and deserves the best.

**HIGHLIGHTS**

- 2,110 first-time freshmen enrolled in Fall 1998 making it the largest freshman class in George Mason history.
- 5,083 degrees and certificates were awarded in 1997-98.
- Graduate students make up 38% of the student population.
- The College of Arts and Sciences enrolls 29.2% of the total population and 38.3% of all undergraduates.
- 2,557 students lived in residential or university-owned housing in Fall 1998.
- Among students receiving financial aid, the average award for 1998-99 is \$6,918. The average award for institutional aid is \$4,499.
- 31% of students are minority or non-resident aliens and 56% are female.
- There are 866 full-time instructional and research faculty in Fall 1998, up 50 from Fall 1997.
- There are 583 part-time faculty in Fall 1998, up 58 from the previous year.
- 55.1% of full-time faculty are tenured, 14.1% are on probationary tenure track, and 30.9% are restricted.
- 84.3% of full-time faculty have a terminal degree.
- Mason's 1997-98 E&G budget exceeds \$146 million.
- Over \$28 million in research expenditures are projected in 1998-99.
- The University Libraries system currently holds 787,291 volumes.

HISTORY OF THE UNIVERSITY

*George Mason was a prominent American patriot, born in 1725 and died October 7, 1792 in Fairfax County, Virginia. He was a statesman who insisted on the protection of individual liberties in the composition of both the Virginia and United States Constitutions. He was ahead of his time in opposing slavery and in rejecting the constitution compromise that perpetuated it. When George Mason of Gunston Hall wrote the Virginia Declaration of Rights in 1776, he gave the United States the noble concept that the rights of the individual must be protected against the power of government. By placing in Virginia's first constitution a list of rights that could never be taken away from citizens, Mason sought to ensure a society in which government could not become all-powerful.*

*As a result of his influence, the first 10 amendments, which we know as the Bill of Rights, were added to the United States Constitution. The universal significance of this action made the American Revolution much more than a war for independence from Great Britain: It enshrined in our most important public document the principle that a government must always respect the rights of the people.*



George Mason University began as the Northern Virginia branch of the University of Virginia in 1957, offering courses in engineering and the liberal arts. Called University College, it opened in a renovated elementary school in Bailey's Crossroads with an enrollment of 17 students.

Eager to support this novice institution, the Town (now City) of Fairfax purchased 150 acres in 1958 and donated it to the University of Virginia in order for a permanent branch campus to be located in Northern Virginia. The following year, the University of Virginia Board of Visitors selected the name George Mason College. Construction of the campus's first four buildings, (North, South, East, West) was completed in 1964. In September of that year, 356 students began their studies in the new classrooms.

In March 1966, the General Assembly authorized the expansion of George Mason College into a four-year, degree-granting institution and gave it the long-range mandate to expand into a major regional university. The first senior class received degrees in June 1968. Graduate programs began in September 1970 with the first master's degrees conferred in June 1971. The George Mason College Board of Control, supported by citizens of Alexandria, Falls Church, Arlington, and Fairfax counties acquired an additional 442 acres. By the end of 1970, the colleges's Fairfax Campus reached 571 acres; it is now 677 acres.

In 1972, the Board of Visitors of the University of Virginia recommended that the college separate from its parent institution. On April 7, 1972, the governor signed the General Assembly legislation that established George Mason University as an independent member of the commonwealth's system of colleges and universities.

In 1979, George Mason was given the authority to grant doctoral degrees and began offering programs at this level. In the same year, the university acquired George Mason University School of Law located at the Arlington Campus.

In 1984, the first Robinson Professors, a group of outstanding scholars committed to undergraduate teaching and interdisciplinary scholarship, joined the faculty as a result of a generous bequest from Clarence J. Robinson.

---

**HISTORY OF THE UNIVERSITY**

---

Drawing prominent scholars from all fields, George Mason's outstanding faculty also includes James M. Buchanan, Nobel laureate in economics, Pulitzer Prize winners, IEEE Centennial Medalists, and recipients of numerous grants and awards including Fulbrights, National Science Foundation, and National Endowment of the Arts, among others. Endowed chairs have also brought many artists and scholars to campus.

In 1985, George Mason University, in partnership with area businesses, developed an engineering program geared toward the emerging information technology field and started the School of Information Technology and Engineering. The School of Information Technology and Engineering (IT&E) is concerned primarily with study areas that involve integrating the information basis for modern engineering with the more conventional physical and materials science approach. The careful integration of these areas results in a unique academic experience for highly motivated students. Through IT&E, George Mason was the first in the country to offer a doctoral degree in information technology.

The establishment of the Institute of the Arts in 1990 solidified the university's commitment to make the arts a pervasive part of students' lives. The Center for the Arts and the arts complex, which includes an art gallery, art studio, a rehearsal space, and performing venues such as TheaterSpace, are all components of the institute. The Institute of the Arts strives to maintain a balance between presenting master works of the past and creating a vital atmosphere for the production of new work. The institute is dedicated to the support and encouragement of all artists, including those of culturally diverse backgrounds, from here and abroad.

In April 1996, the innovative George W. Johnson Center opened. The Johnson Center's eight acres of floor space houses a 25,000-volume book collection, media center, computer labs, bank, bookstore, convenience store and food services. By combining student life resources with educational support, George Mason has created the learning workspace of the future. The center fosters university-wide learning by integrating students' curricular and extracurricular activities and by strengthening relationships among the university communities.

Since 1972, the university's development has been marked by rapid growth and innovative planning. In 26 years, enrollment has risen from 4,166 to 24,010 in Fall 1998. George Mason has expanded its presence to serve the entire Northern Virginia region by employing the revolutionary concept of the "multi-campus" university. In collaboration with county and state governments, the university established a campus in Prince William County. A partnership with American Type Culture Collection, the world's foremost archive of living cultures, will lead to academic programs focusing on bioinformatics and make Prince William County a center for medical technology. The new Prince William Campus opened its doors in September of 1997. The university is also expanding its presence in Arlington, home of the George Mason University School of Law. Construction is underway for new buildings which will include programs ranging from business to international transactions. The first of the new buildings at Arlington will be available for occupation in January 1999.

George Mason University has achieved national distinction in many areas. Its reputation continues to grow as the university provides for an educational, cultural, and economic resource for the people of Northern Virginia, the Commonwealth of Virginia, and the nation.

---

**MISSION STATEMENT**

---

The mission statement for George Mason University reads as follows:

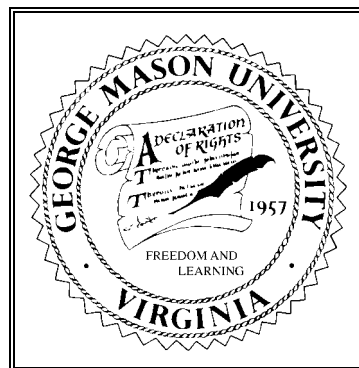
*George Mason University will be an institution of international academic reputation providing superior education enabling students to develop critical, analytical, and imaginative thinking and to make well-founded ethical decisions. The university will respond to the call for interdisciplinary research and teaching not simply by adding programs, but by rethinking the traditional structure of the academy.*

*The university will prepare students to address the complex issues facing them in society and to discover meaning in their own lives. George Mason will encourage diversity in its student body and will meet the needs of students by providing them with undergraduate, graduate, and professional courses of study that are interdisciplinary and innovative. The university will energetically seek ways to interact with and serve the needs of the student body.*

*The university will nurture and support a faculty that is diverse, innovative, and excellent in teaching, active in pure and applied research, and responsive to the needs of students and the community. The faculty will embody the university's interactive approach to change both in the academy and in the world.*

*The university will be a resource of the commonwealth of Virginia serving private and public sectors and will be an intellectual and cultural nexus between Northern Virginia, the nation, and the world.*

*Adopted by the Board of Visitors  
January, 1991*





A PROFILE OF OUR STUDENT POPULATION, PROGRAMS AND FACILITIES  
FALL 1998

<b>CAMPUS SIZE</b>			<b>FINANCIAL AID PROFILE</b>	
Fairfax Campus	677 acres		Students Receiving Aid(36%)	8,530
Arlington Campus	5.2 acres		Average Aid Package	\$7,105
Prince William Campus	120 acres		Grants	\$3,677
<b>ACADEMIC DIVISIONS</b>			Loans	\$5,925
Institute of the Arts			Work Study	\$2,238
College of Arts and Sciences			Range of Awards	\$100 to \$34,500
Institute for Biosciences, Bioinformatics & Biotechnology			<b>TOTAL OPERATING BUDGET</b>	
Institute for Computational Science & Informatics			\$280 million	
Institute for Conflict Analysis and Resolution			<b>BUILDINGS</b>	
Graduate School of Education			Academic/Administration	56
School of Information Technology & Engineering			Student Unions	3
School of Law			Recreation Facilities	4
School of Management			Student Housing	61
New Century College			<b>Total</b>	<b>124</b>
College of Nursing and Health Science			<b>BUILDINGS UNDER CONSTRUCTION</b>	
The Institute of Public Policy			Phase I, Arlington Campus	
<b>DEGREE PROGRAMS OFFERED</b>			Square Feet:	150,000
Undergraduate	54		Project Cost:	\$18 million
Graduate	58 (Master's 47; Doctoral 11)		Regional Recreation Center, Prince William Campus	
Professional	1		Square Feet:	110,000
<b>Total</b>	<b>113</b>		Project Cost:	\$13.4 million
<b>STUDENTS</b>			<b>FACILITIES OPEN TO THE PUBLIC</b>	
<b>Fall 1998 Enrollment</b>			<b>George W. Johnson Center:</b> The Johnson Center has eight acres of floor space and houses a 25,000-volume book collection, media center, computer labs, bank, bookstore, convenience store, and food services. New Century College classes meet there, and specially outfitted spaces provide opportunities for film, dance, meetings, and private study. The center fosters university-wide learning by integrating students' curricular and extracurricular activities and by strengthening relationships between the university communities.	
Undergraduate Degree Seeking	13,803		<b>Center for the Arts:</b> The Center for the Arts complex includes the 2,000-seat Concert Hall, two experimental theaters, three dance studios, and music and fine arts studios. 500 Concert Hall tickets are available free to students for each performance.	
Graduate Degree Seeking			<b>Patriot Center:</b> Patriot Center is a 10,000-seat sports and entertainment arena designed for basketball, concerts, and other sports and entertainment events.	
Master's	5,505		<b>Recreation Sports Complex:</b> The complex features 113,900 square feet (110,400 for the original building, 3,500 for the 1992 weight room addition), and includes a 200-meter track, 6 basketball courts, 7 volleyball courts, 8 handball/racquetball courts, a batting cage, golf and archery nets, fencing lanes, locker rooms, a weight room, and saunas. It also features a 400-meter outdoor track, soccer field, baseball diamond, and other athletic fields.	
Doctoral	1,323		<b>Aquatic and Fitness Center:</b> The 66,000 square foot two-pool complex includes a 3,500 square foot fitness gallery, four classrooms, whirlpool and co-ed sauna with men's and women's shower/locker room and family changing area.	
Professional (Law)	741		<b>ATHLETIC PROGRAMS</b>	
Extended Studies			Over 330 student-athletes compete in 20 men's and women's Division I sports--baseball, basketball, cross country, diving, golf, lacrosse, rowing, soccer, softball, swimming, tennis, indoor and outdoor track and field, volleyball, and wrestling. Intercollegiate men's and women's teams are members of the National Collegiate Athletic Association (NCAA) Division I, the Colonial Athletic Association (CAA), the Eastern College Athletic Conference (ECAC), and the Intercollegiate Association of Amateur Athletes of America (IC4A).	
Undergraduate	431			
Graduate	2,207			
Total Enrollment	24,010			
<b>Course Load</b>				
Full-time Enrollment	11,967			
Part-time Enrollment	12,043			
<b>Domicile</b>				
In-state Enrollment	21,110			
Out-of-state Enrollment	2,900			
<b>Minority Enrollment</b>				
African American	1,957			
Asian American	2,939			
Hispanic American	1,290			
Native American	93			
Non-resident Alien	1,167			
<b>Fall 1998 Freshman Class</b>				
First-time Freshmen	2,110			
<b>Gender</b>				
Female	13,414			
Male	10,596			
<b>Residential Population</b>				
Students Living on Campus	2,557			
<b>1998-99 TUITION AND FEES</b>				
In-state Students	\$4,344/year			
\$181/credit hour				
Out-of-state Students	\$12,504/year			
\$521/credit hour				
<i>(School of Law Rates Differ)</i>				
<b>1998-99 ROOM AND BOARD</b>				
Room (average per year)	\$3,300			
Board (15 meal plan)	\$1,820			

---

INSTITUTIONAL AND PROFESSIONAL ACCREDITATION

---

**INSTITUTIONAL ACCREDITATION**

George Mason University is accredited by the **Commission on Colleges of the Southern Association of Colleges and Schools** to award bachelor's, master's and doctoral degrees.

In addition, some programs are accredited by specialized accrediting bodies.

**PROFESSIONAL ACCREDITATION**

Chemistry

(B.S. in Chemistry)

American Chemical Society

College of Nursing and Health Science

National League for Nursing

Commission on Collegiate Nursing Education

Graduate School of Education

(Unit Accreditation at the Basic and Advanced Levels)

National Council for Accreditation of Teacher Education

Music

National Association of Schools of Music

Music Education Concentration

National Council for Accreditation Teacher Education

Psychology

(Doctoral Clinical Program)

American Psychological Association

(Master's in Psychology, Concentration in School Psychology)

National Association of School Psychologists

Public and International Affairs Department

(Master's of Public Administration Program)

National Association of Schools of Public Affairs and Administration

School of Information Technology and Engineering

(B.S. Computer Science)

Computer Science Accreditation Board

(B.S. Electrical Engineering; B.S. Urban Systems Engineering; B.S. Systems Engineering)

Accreditation Board for Engineering and Technology

School of Law

American Bar Association

School of Management

American Assembly of Collegiate Schools of Business

Social Work Program

Council on Social Work Education

**OTHER ACCREDITATION**

**Specialized State Accreditation:**

College of Nursing and Health Science -- Virginia State Board of Nursing

Graduate School of Education Teacher Education Programs -- Virginia State Board of Education

**GEORGE MASON UNIVERSITY'S SCHEV APPROVED PEER GROUP  
DEPT. OF PLANNING & BUDGET CORE PERFORMANCE MEASURES FOR 1997-98**

<b>School</b>	<b>1997 6yr Grad Rate</b>	<b>1997 Freshmen Retention</b>	<b>1996 Full- time Instr Fac</b>	<b>1995 All Full time Inst. &amp; Res. Fac</b>	<b>1996 Student FTE</b>
<b>George Mason University</b>	<b>48%</b>	<b>74%</b>	<b>711</b>	<b>760</b>	<b>16,095</b>
Georgia State University	25%	70%	811	829	16,307
Loyola University of Chicago	63%	83%	530	638	9,790
SUNY - Albany	66%	83%	581	609	13,100
SUNY - Buffalo	59%	83%	960	1,579	19,770
Syracuse University, Main Campus	69%	89%	803	819	15,317
Temple University	37%	n/a	1,118	1,604	21,346
University of Cincinnati	48%	75%	1,115	1,977	23,115
University of Connecticut	68%	87%	1,025	1,149	17,863
University of Iowa	83%	37%	1,049	1,809	23,873
University of Kansas, Main Campus	54%	77%	975	1,148	21,038
University of Kentucky	48%	78%	1,239	1,796	20,128
University of Louisville	29%	74%	689	1,165	15,261
University of Missouri, Kansas City	37%	72%	459	703	7,223
University of New Mexico, Main Campus	37%	71%	836	1,513	17,297
University of Oklahoma, Norman Campus	54%	81%	808	882	17,914
University of Pittsburgh Main Campus	61%	82%	1,291	3,206	20,994
University of Rhode Island	64%	76%	628	651	10,590
University of South Carolina at Columbia	56%	79%	1,028	1,379	20,036
University of South Florida	47%	76%	1,059	1,457	24,587
University of Tennessee at Knoxville	56%	77%	1,294	2,069	21,843
University of Utah	38%	59%	912	1,656	20,525
University of Wisconsin-Milwaukee	35%	68%	749	823	15,991
Wayne State University	42%	63%	913	1,534	20,049
Western Michigan University	52%	52%	756	1,188	19,632
<b>Average</b>	<b>51%</b>	<b>74%</b>	<b>894</b>	<b>1,318</b>	<b>17,987</b>

Source: U.S. News 1998 website, 1996 IPEDS Faculty Salary.

**GEORGE MASON UNIVERSITY'S SCHEV APPROVED PEER GROUP (CONTINUED)**  
**DEPT. OF PLANNING & BUDGET CORE PERFORMANCE MEASURES FOR 1997-98**

School	1996 Instruction	1996 Research	1996 Public Service	1996 Academic Support	1996 Student Services	1996 Inst Support	1996 O&M	1996 Library (Academic)	1996 Total
<b>George Mason University</b>	<b>87,432,079</b>	<b>17,695,522</b>	<b>2,499,270</b>	<b>19,394,109</b>	<b>7,563,218</b>	<b>19,990,641</b>	<b>12,338,964</b>	<b>10,014,251</b>	<b>176,928,054</b>
Georgia State University	92,846,924	37,184,702	5,404,655	27,292,218	19,554,967	23,001,960	18,032,488	10,068,153	233,386,067
Loyola University of Chicago	113,678,344	15,547,571	5,199,934	9,832,714	9,856,354	55,583,466	26,956,554	9,766,807	246,421,744
SUNY - Albany	96,093,756	18,512,961	3,839,343	13,752,808	11,274,917	18,289,444	15,363,477	8,347,768	185,474,474
SUNY - Buffalo	165,473,686	61,014,292	4,763,646	45,402,418	15,472,945	47,071,012	39,655,287	14,609,838	393,463,124
Syracuse University, Main Campus	127,227,935	20,444,282		40,859,688	16,464,903	33,417,656	31,373,894	9,689,194	279,477,552
Temple University	194,448,000	30,086,000	28,440,000	49,815,000	20,878,000	48,531,000	39,026,000	11,468,000	422,692,000
University of Cincinnati	176,699,311	65,399,576	35,628,210	42,959,398	18,245,579	27,646,094	35,158,547	15,765,387	417,502,102
University of Connecticut	140,465,843	51,834,699	20,542,786	47,428,890	7,671,877	40,669,645	25,990,050	17,596,417	352,200,207
University of Iowa	208,683,262	128,044,604	55,727,600	62,746,498	19,292,607	26,573,441	41,826,175	20,406,467	563,300,654
University of Kansas, Main Campus	115,979,258	57,268,805	11,685,879	29,461,568	13,599,502	21,935,021	24,933,186	13,525,269	288,388,488
University of Kentucky	188,052,819	119,273,186	121,597,214	51,361,653	16,786,982	32,536,871	27,970,246	18,671,785	576,250,756
University of Louisville	130,366,000	26,574,000	50,716,000	38,941,000	10,074,000	27,781,000	18,361,000	11,037,000	313,850,000
University of Missouri, Kansas City	80,071,336	9,057,494	9,447,390	16,599,089	11,605,484	11,491,258	13,797,012	5,899,112	157,968,175
University of New Mexico, Main Campus	123,794,804	94,001,310	114,665,458	23,069,290	16,353,654	22,485,250	23,845,067	11,974,863	430,189,696
University of Oklahoma, Norman Campus	92,949,000	38,030,000	28,970,000	34,409,000	8,753,000	11,834,000	17,819,000	8,702,000	241,466,000
University of Pittsburgh Main Campus	207,503,856	166,017,345	29,771,557	49,185,622	35,498,148	68,477,538	39,557,118	10,496,702	606,507,886
University of Rhode Island	61,507,699	39,057,057	4,457,426	22,580,452	16,868,066	18,380,746	18,601,809	5,818,507	187,271,762
University of South Carolina at Columbia	148,821,784	47,482,447	37,698,931	37,380,580	12,205,761	25,659,437	22,700,698	14,517,361	346,466,999
University of South Florida	170,039,834	72,578,875	16,991,906	63,762,518	14,798,576	50,447,795	24,396,258	10,140,151	423,155,913
University of Tennessee at Knoxville	143,368,428	95,344,243	60,563,012	42,411,202	21,981,625	17,797,258	25,884,370	12,875,056	420,225,194
University of Utah	155,893,000	119,717,000	180,069,000	41,122,000	16,318,000	41,491,000	28,422,000	15,182,000	598,214,000
University of Wisconsin-Milwaukee	87,572,454	18,900,970	16,099,150	31,014,479	22,517,822	10,851,401	15,189,055	9,734,150	211,879,481
Wayne State University	162,682,044	87,040,649	59,045,510	42,958,587	21,431,297	37,076,484	35,868,037	14,710,024	460,812,632
Western Michigan University	86,019,342	8,278,472	8,675,811	25,286,799	16,172,137	19,956,447	21,464,656	8,771,483	194,625,147
<b>Average</b>	<b>134,306,832</b>	<b>57,775,442</b>	<b>38,020,820</b>	<b>36,361,103</b>	<b>16,049,577</b>	<b>30,359,035</b>	<b>25,781,238</b>	<b>11,991,510</b>	<b>350,645,557</b>

Source: 1996-97 IPEDS Finance data.

Notes: Finance data for private schools Loyola and Syracuse are not available yet from NCES, so 1995 data are used.

## ENDOWED CHAIRS

Robert A. Anthony GMU Foundation Professor Law	Ryszard S. Michalski Planning Research Corporation Information Technology and Computer Science
Richard C. Bausch Heritage Chair Writing	Christopher R. Mitchell Drucie French Cumbie Professor Conflict Resolution
James T. Bennett William P. Snavely Professor Political Economy and Public Policy	Timothy J. Muris GMU Foundation Professor Law
James M. Buchanan Holbert L. Harris University Professor Economics	Larry E. Ribstein GMU Foundation Professor Law
Stephen D. Burton Heritage Chair Music	Andrew P. Sage First American Bank of Virginia Professor Information Technology and Computer Science
Kevin P. Clements The Vernon M. and Minnie I. Lynch Professor Conflict Resolution	Roger D. Stough Northern Virginia Chair Local Government
Gerald Cook Earle C. Williams Professor Information Technology and Electrical Engineering	Harry L. VanTrees George Mason Institute Professor Electrical, Computer and Systems Engineering
Michael G. Ferri GMU Foundation Professor Finance	Richard E. Wagner Holbert L. Harris University Professor Economics
Francis Fukuyama Omer L. and Nancy Hirst Professor Public Policy	Edward J. Wegman Bernard J. Dunn Professor Information Technology and Applied Statistics
Ernest Gellhorn GMU Foundation Professor Law	Walter E. Williams John M. Olin Distinguished Professor Economics
James T. Godfrey GMU Foundation Professor Accounting	Ruth E. Zambrana Elisabeth Shirley Enochs Chair Child Welfare
Carl M. Harris BDM Professor Information Technology	Vacant Sydney S. Dewberry Chair Civil Environment and Infrastructure
Don E. Kash The John T. Hazel, Sr., and Ruth D. Hazel Professor Public Policy	Vacant GMU Foundation Professor Decision Sciences and MIS
Jerome B. Kernan GMU Foundation Professor Behavior Analysis, Department of Marketing	Vacant LeRoy Eakin, Sr. Professor Strategic Management
Don Lavoie The David H. Koch and Charles G. Koch Professor International Affairs	Vacant Duncan Black Professor Economics
Seymour M. Lipset The Virginia E. Hazel and John T. Hazel, Jr., Professor Public Policy & Public Affairs, & Sociology	Vacant Heritage Chair Arts and Cultural Criticism

SOURCE: Office of the Provost

## EMERITUS FACULTY

---

Marjory Brown Azarowicz Professor Emerita of Education	Thelma Z. Lavine Professor Emerita of Philosophy and American Culture
Barry K. Beyer Professor Emeritus of Education	William H. McFarlane Professor Emeritus of Philosophy
Henry J. Bindel, Jr. Professor Emeritus of Education	Gustavo Mellander Dean Emeritus of Graduate School of Education
C. Alan Boneau Professor Emeritus of Psychology	Henry P. Meyer Associate Professor Emeritus of French
Larry Bowen Dean Emeritus of Graduate School of Education	Eugenie V. Mielczarek Professor Emerita of Physics
Stephen J. Brown Professor Emeritus of English	Mary S. Montebello Professor Emerita of Education
Mary Kay Cabell Associate Professor Emerita of Mathematical Science	Ralph N. Norvell Dean Emeritus of Law
Ernest Cassara Professor Emeritus of History	Josephine F. Pacheco Professor Emerita of History
Arthur Chickering Professor Emeritus of Education	James D. Palmer Professor Emeritus of Information Technology and Engineering
Evelyn E. Cohelan Professor Emerita of Nursing	Anthony F. Palmieri Associate Professor Emeritus of English
John Henry Cooper Chair Emeritus of Health, Sport and Leisure Studies	Samuel H. Phillips Professor Emeritus of Economics
Lloyd M. DeBoer Dean Emeritus of School of Business Administration	Conrad Philos Professor Emeritus of Law
Stephen T. Early Professor Emeritus of Government and Politics	Coleman Raphael Dean Emeritus, School of Business Administration
Albert W. Edgemon Professor Emeritus of Education	Mian M. Saeed Professor Emeritus of History
Edwin A. Fleishman Professor Emeritus of Psychology	Andrew P. Sage Founding Dean Emeritus School of Information Technology
Arnald D. Gabriel Professor Emeritus of Music	Ben F. Sands, Jr. Professor Emeritus of Management
Helen S. Garson Professor Emerita of English	David H. Schaefer Associate Professor Emeritus of Electrical and Computer Engineering
Martha Giles Professor Emerita of Music	Betty J. Schuchman Associate Professor Emerita of Education
Robert L. Gilstrap Professor Emeritus of Education	Carol J. Sears Associate Professor Emerita of Education
Joseph B. Gittler Professor Emeritus of Sociology	James G. Smith Professor Emeritus of Music
Thomas H. Hill Professor Emeritus of Music	William P. Snavelly Professor Emeritus of Economics
James L. Jackson Professor Emeritus of English	John P. Soder Associate Professor Emeritus of History
Helen Jenkins Professor Emerita of Nursing	Lorin A. Thompson President Emeritus
George W. Johnson President Emeritus, Professor Emeritus of English	Dorothy J. Walker Professor Emerita of Nursing
Hazel W. Johnson-Brown Professor Emerita of Nursing	C. Robert Walter, Jr. Professor Emeritus of Chemistry
Irving Kayton Professor Emeritus of Law	William Scott Willis Professor Emeritus of French
Emelia-Louise Kilby Professor Emerita of Health and Physical Education	Norman A. Yance Associate Professor Emeritus of Religious Studies
Barbara Knight Associate Professor Emerita of Public and International Affairs	George A. Zaphiriou Professor Emeritus of Law
Robert Charles Krug Professor Emeritus of Chemistry	

---

SOURCE: Office of the Provost

---

**CLARENCE J. ROBINSON PROFESSORS**

---

Vassily Aksyonov  
Russian Literature and Writing

Shaul Bakhash  
History

Mary Catherine Bateson  
Anthropology and English

Paul D'Andrea  
Theater and English

Jean-Paul Dumont  
Anthropology

Robert M. Hazen  
Earth Science

Hugh Hecló  
Public Affairs

Harold J. Morowitz  
Biology and Natural Science

John N. Paden  
International Studies

James S. Trefil  
Physics

Egon Verheyen  
Humanities

Lenore J. Weitzman  
Sociology and Law

Roger W. Wilkins  
History and American Culture

---

**UNIVERSITY PROFESSORS**

---

Larry S. Bowen  
Education and Public Policy

James E. Gentle  
Computational Statistics

Kingsley E. Haynes  
Public Policy

Menas Kafatos  
Interdisciplinary Science

Henry G. Manne  
Law

Andrew P. Sage  
Information Technology and Engineering

Edgar H. Sibley  
Information Systems and Systems Engineering

Valery N. Soyfer  
Molecular Genetics

John N. Warfield  
Center for Advanced Study in the Integrative Sciences

Alexander H. Levis  
Electrical and Computer Engineering

---

**COMMONWEALTH PROFESSORS**

---

Frieda Butler  
College of Nursing and Health Science

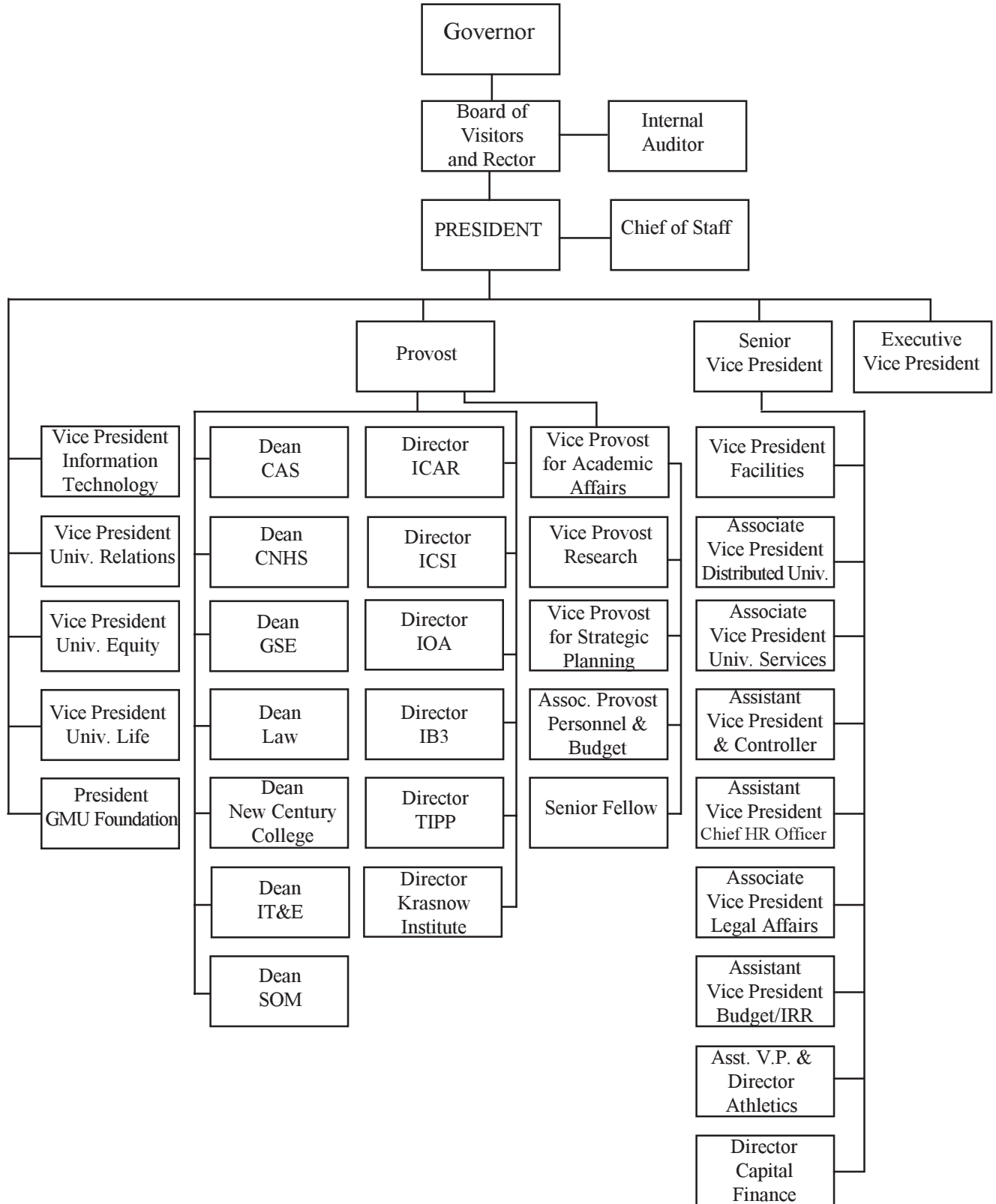
Charlene Douglas  
College of Nursing and Health Science

Lawrence Washington  
College of Nursing and Health Science





ADMINISTRATION ORGANIZATIONAL CHART



## STATE COUNCIL OF HIGHER EDUCATION FOR VIRGINIA

The State Council of Higher Education for Virginia (SCHEV) was established in 1956. The council is both the coordinator of and the advocate for higher education in the commonwealth of Virginia. Responsibilities include enrollment projections, budget planning, institutional approvals, and assessment. SCHEV is composed of eleven members appointed by the governor to four-year terms; no member may serve more than two consecutive four-year terms.

As of July 1998, the members and officers of SCHEV are:

John D. Padgett

CHAIRMAN

*Norfolk, Virginia*

Appointed: July 1, 1995

Current Term Expires: June 30, 1999

H. Lynn Hopewell, Jr.

VICE CHAIRMAN

*Warrenton, Virginia*

Appointed: July 1, 1996

Current Term Expires: June 30, 2000

Douglas Combs

*Warrenton, Virginia*

Appointed: July 1, 1998

Current Term Expires: June 30, 2002

John W. Gerdelman

*McLean, Virginia*

Appointed: July 1, 1997

Current Term Expires: June 30, 2001

Rayford Harris

*Richmond, Virginia*

Appointed: July 1, 1998

Current Term Expires: June 30, 2002

Walter M. Curt

*Harrisonburg, Virginia*

Appointed: July 1, 1998

Current Term Expires: June 30, 2002

Scott Goodman

*Charlottesville, Virginia*

Appointed: July 1, 1998

Current Term Expires: June 30, 2002

Karen F. Marcus

*Richmond, Virginia*

Appointed: July 1, 1998

Current Term Expires: June 30, 2002

Thomas F. Farrell, II

*Richmond, Virginia*

Appointed: July 1, 1998

Current Term Expires: June 30, 2002

Kate Obenshain Griffin

*Winchester, Virginia*

Appointed: July 1, 1995

Current Term Expires: June 30, 1999

Anne Marie Whittemore

*Richmond, Virginia*

Appointed: July 1, 1997

Current Term Expires: June 30, 2001

---

**BOARD OF VISITORS**

---

The Board of Visitors (BOV) of George Mason University was created by an act of the General Assembly when the university became an independent institution. The act which established the Board of Visitors became effective April 7, 1972. The BOV is a corporate body serving under the leadership of a rector, vice rector, and secretary. The 16 members of the Board are appointed by the governor of Virginia on a rotating basis to serve four-year terms. A student representative (nonvoting member) is appointed by the Board of Visitors each year at the May meeting to serve a one-year term.

As of September 1998, the members of the BOV are:

The Honorable Edwin Meese, III  
RECTOR  
*Washington, D.C.*

Mr. W. Scott McGeary  
VICE RECTOR  
*Arlington, Virginia*

Mr. Horace Cooper  
SECRETARY  
*Washington, D.C.*

Mr. Adam J. Sutton  
STUDENT REPRESENTATIVE  
*Fairfax, Virginia*

Ms. M. Constance Bedell  
*Springfield, Virginia*

Mr. Scott LaRose  
*Herndon, Virginia*

Joann P. DiGennaro, Esq.  
*McLean, Virginia*

Mr. Robert Lauterberg  
*Richmond, Virginia*

Dr. Edwin J. Feulner, Jr.  
*Washington, D.C.*

Mr. James Miller  
*Washington, D.C.*

Dr. Richard H. Fink  
*Washington, D.C.*

Mr. Marvin R. Murray  
*Alexandria, Virginia*

Ms. Janice S. Golec  
*Arlington, Virginia*

Mr. David N. Olson  
*Ashburn, Virginia*

Mr. James Hazel  
*Arlington, Virginia*

Mr. Leonard Pomata  
*McLean, Virginia*

Dr. William Kristol  
*Washington, D.C.*

Mr. Richard Kelsey (Student Alternate)  
*Falls Church, Virginia*

---

UNIVERSITY ADMINISTRATION

---

**PRESIDENT'S OFFICE**

---

President	Dr. Alan G. Merten
Vice President, University Relations	Ms. Helen J. Ackerman
Vice President, and University Equity Officer	Mr. Earl G. Ingram
Vice President for University Life	Dr. Karen Rosenblum
Vice President, Information Technology	Dr. Joy Hughes
President, GMU Foundation	Vacant
Chief of Staff	Dr. Lawrence D. Czarda

**UNIVERSITY PROVOST**

---

University Provost	Dr. David L. Potter
Vice Provost for Academic Affairs	Dr. Joseph S. Wood
Vice Provost for Research	Dr. Christopher T. Hill
Vice Provost for Strategic Planning	Dr. Linda A. Schwartzstein
Associate Provost for Personnel and Budget	Mr. David W. Rossell
Senior Fellow	Dr. Lorna M. Irvine

**SENIOR VICE PRESIDENT**

---

Senior Vice President	Dr. Maurice W. Scherrens
Vice President for Facilities	Mr. Reid Herlichy
Associate Vice President for Operational Services	Mr. Stanley E. Taylor
Associate Vice President for University Services	Mr. Kenneth Bumgarner
Associate Vice President for Legal Affairs	Mr. Jeffrey A. Brandwine
Assistant Vice President and Controller	Ms. Elizabeth Brock
Assistant Vice President and Chief Human Resource Officer	Mr. Keith Bushey
Assistant Vice President for Budget/IRR	Ms. Donna Kidd
Assistant Vice President and Director of Athletics	Mr. Thomas O'Connor
Director of Capital Finance	Mr. James A. Stamp

**EXECUTIVE VICE PRESIDENT**

---

Excutive Vice President	Dr. H. Randall Edwards
-------------------------	------------------------

## DEANS &amp; DIRECTORS, CHAIRS

## COLLEGE OF ARTS AND SCIENCES

Dean	Danielle Struppa
Senior Associate Dean	Zita Tyer
Associate Dean for Student Academic Affairs	Doris Bitler
Associate Dean for Academic Programs	Dee Ann Holisky
Associate Dean for Outreach	Richard Klimoski
Assistant Dean for Student Academic Affairs	Walter Rankin
Assistant Dean for Student Academic Affairs	JoAnn Schrass
Associate Director of Graduate Admissions	Susan Swett
Administration of Justice	Vacant
African American Studies	Gilbert Morris
Biology	George E. Taylor, Jr.
Chemistry	George Mushrush
Communications	Don Boileau
Cultural Studies	Mark Jacobs
Economics	Walter Williams
English	Christopher Thaiss
Geography and Earth Science	Richard Diecchio
History and Art History	Jack Censer
Honors Program in General Education	Mark Holt
Interdisciplinary Studies, M.A.	Rosemarie Zagarri
Mathematical Sciences	Robert Sachs
Modern and Classical Languages	Dick Gerdes
Music	Joseph Shirk
Philosophy and Religious Studies	Wayne Froman
Physics and Astronomy	B. Joseph Lieb
Program on Social and Organizational Learning	Mark Addleson
Psychology	Robert Smith
Public and International Affairs	Scott Keeter
Sociology and Anthropology	Joseph A. Scimecca
Telecommunications	Cynthia Lont
Women's Studies	Deborah Bergoffen

## COLLEGE OF NURSING AND HEALTH SCIENCE

Dean	Rita M. Carty
Associate Dean for Undergraduate Programs	Georgine M. Redmond
Associate Dean for Graduate Programs and Research	James D. Vail
Assistant Dean for Student Academic Affairs	Rosemarie C. Brenkus
Assistant Dean for Administration	Myra H. Fisher

DEANS & DIRECTORS, CHAIRS

**GRADUATE SCHOOL OF EDUCATION**

Dean	Gary R. Galluzzo
Associate Dean	Martin E. Ford
Assistant Dean of Academic Student Affairs	Mark Goor
Health, Fitness & Recreation Resources	Brett Wright
Teacher Education	Mary Anne Lecos
Ph.D. in Education Program	Gerald Wallace
Adult Learning & Professional Development	Edward Jones
Human disAbilities	Michael Behrmann
Bilingual/Multicultural/ESL Teacher Preparation	Harold Chu
Computer Instruction & Educational Technology	Michael Behrmann
Restructuring of Education in Science & Technology	Donna Sterling
Educational & Counseling Services	Mary Ann Dzama
Educational Transformation	Leo Rigsby
The Leadership Academy	Clark Dobson
The National Center for Community College Education	Gustavo Mellander

**INSTITUTE OF THE ARTS**

Director	Betsy Brininger
Director of Academic Affairs	Evans Mandes
Art and Visual Technologies	Scott Martin
Dance	Linda Miller
Interdisciplinary Studies	Evans Mandes
Theater	Kristin Johnsen-Neshati

**INSTITUTE FOR BIOSCIENCES, BIOINFORMATICS  
AND BIOTECHNOLOGY**

Director	Clark Tibbetts
----------	----------------

**INSTITUTE FOR COMPUTATIONAL SCIENCES  
AND INFORMATICS**

Director	W. Murray Black
----------	-----------------

**INSTITUTE FOR CONFLICT ANALYSIS  
AND RESOLUTION**

Director	Kevin P. Clements
----------	-------------------

**KRASNOW INSTITUTE**

Director	James Olds
----------	------------

**NEW CENTURY COLLEGE**

Dean	John S. O'Connor
Associate Dean	Karen K. Oates

DEANS & DIRECTORS, CHAIRS

**SCHOOL OF INFORMATION TECHNOLOGY  
AND ENGINEERING**

Dean	Lloyd Griffiths
Associate Dean of Administration	W. Murray Black
Associate Dean for Graduate Studies and Research	Stephen Nash
Assistant Dean for Undergraduate Studies	E. Bernard White
Commonwealth Graduate Engineering Program	John P. Wenzelberger
Applied and Engineering Statistics	Edward Wegman
Civil, Environmental & Infrastructure Engineering	Mark Houck
Computer Science	Henry Hamburger
Electrical & Computer Engineering	Andre Manitius
Information & Software Systems Engineering	Sushil Jajodia
Systems Engineering & Operations Research	Karla Hoffman

**SCHOOL OF LAW**

Dean	Mark F. Grady
Associate Dean for Academic Affairs	Gail Heriot
Associate Dean	Winston Moore
Associate Dean for Research & Technology	Deborah Keene
Director of Career Services	Anna Davis
Director of Law & Economics Center	Gordon Brady
Director of Administration & Finance	Raymond D'Souza
Director of Publications & Public Relations	Melanie Taylor

**SCHOOL OF MANAGEMENT**

Dean	Teresa Domzal
Senior Associate Dean	Timothy Sugrue
Assistant Dean, Academic Programs	David Harr
Director of Student Services	Ann Lewis
Undergraduate Program Director	Mary Erickson
Graduate Program Director	Gopal Krishnan
Managing Director of Executive Programs	Mary Leventhal
Information Technology Coordinator	George Wray

**THE INSTITUTE OF PUBLIC POLICY**

Director	Kingsley Haynes
Associate Director	Roger Stough
Director of Student Affairs	Paul Baker





UNIVERSITY ADMISSIONS SUMMARY  
FALL 1998

	Applied			Approved					Enrolled				
	Fall 1997		Fall 1998	Fall 1997		Fall 1998			Fall 1997		Fall 1998		
	Number	Number	% Change	Number	% of Applied	Number	% of Applied	% Change	Number	Accepted	Number	Accepted	% Change
<b>First Time Freshmen</b>													
Northern VA	3,150	3,284	4.3%	2,300	73.0	2,365	72.0	2.8%	1,406	61.1	1,467	62.0	4.3%
Other VA	1,045	1,277	22.2%	686	65.6	736	57.6	7.3%	353	51.5	393	53.4	11.3%
Out of State	1,210	1,474	21.8%	696	57.5	714	48.4	2.6%	256	36.8	250	35.0	-2.3%
<i>Subtotal</i>	5,405	6,035	11.7%	3,682	68.1	3,815	63.2	3.6%	2,015	54.7	2,110	55.3	4.7%
<b>Transfer</b>													
Northern VA CC	1,789	1,751	-2.1%	1,516	84.7	1,522	86.9	0.4%	1,070	70.6	1,162	76.3	8.6%
Other VA Col	729	754	3.4%	594	81.5	593	78.6	-0.2%	361	60.8	359	60.5	-0.6%
Out of State Col	1,267	1,304	2.9%	949	74.9	942	72.2	-0.7%	516	54.4	515	54.7	-0.2%
<i>Subtotal</i>	3,785	3,809	0.6%	3,059	80.8	3,057	80.3	-0.1%	1,947	63.6	2,036	66.6	4.6%
<b>Undergraduate Total</b>	<b>9,190</b>	<b>9,844</b>	<b>7.1%</b>	<b>6,741</b>	<b>73.4</b>	<b>6,872</b>	<b>69.8</b>	<b>1.9%</b>	<b>3,962</b>	<b>58.8</b>	<b>4,146</b>	<b>60.3</b>	<b>4.6%</b>
<b>Masters</b>													
Candidate	3,163	2,436	-23.0%	2,001	63.3	1,536	63.1	-23.2%	1,187	59.3	933	60.7	-21.4%
Provisional	429	314	-26.8%	425	99.1	311	99.0	-26.8%	311	73.2	216	69.5	-30.5%
Special	612	549	-10.3%	557	91.0	473	86.2	-15.1%	359	64.5	290	61.3	-19.2%
Certificate*	86	259	201.2%	78	90.7	234	90.3	200.0%	42	53.8	157	67.1	273.8%
<i>Subtotal</i>	4,290	3,558	-17.1%	3,061	71.4	2,554	71.8	-16.6%	1,899	62.0	1,596	62.5	-16.0%
Doctoral	881	794	-9.9%	431	48.9	393	49.5	-8.8%	217	50.3	222	56.5	2.3%
<b>Graduate Total</b>	<b>5,171</b>	<b>4,352</b>	<b>-15.8%</b>	<b>3,492</b>	<b>67.5</b>	<b>2,947</b>	<b>67.7</b>	<b>-15.6%</b>	<b>2,116</b>	<b>60.6</b>	<b>1,818</b>	<b>61.7</b>	<b>-14.1%</b>
<b>First Professional (Law)</b>	<b>1,693</b>	<b>1,965</b>	<b>16.1%</b>	<b>678</b>	<b>40.0</b>	<b>699</b>	<b>35.6</b>	<b>3.1%</b>	<b>216</b>	<b>31.9</b>	<b>214</b>	<b>30.6</b>	<b>-0.9%</b>
<b>University Total</b>	<b>16,054</b>	<b>16,161</b>	<b>0.7%</b>	<b>10,911</b>	<b>68.0</b>	<b>10,518</b>	<b>65.1</b>	<b>-3.6%</b>	<b>6,294</b>	<b>57.7</b>	<b>6,178</b>	<b>58.7</b>	<b>-1.8%</b>

\*New Certificate program added: Instructional Technology (GSE)

NEW ENROLLEES BY RESIDENCY STATUS  
FALL 1998

	Total		First Time Freshmen		Undergraduate Transfer		Graduate		Law	
	No.	%*	No.	%*	No.	%*	No.	%*	No.	%*
<b>Virginia</b>	<b>5,255</b>	<b>85.1</b>	<b>1,860</b>	<b>30.1</b>	<b>1,823</b>	<b>29.5</b>	<b>1,406</b>	<b>22.8</b>	<b>166</b>	<b>2.7</b>
Northern Virginia	4,544	73.6	1,467	23.7	1,679	27.2	1,243	20.1	155	2.5
Arlington	352	5.7	62	1.0	88	1.4	154	2.5	48	0.8
Fairfax County	2,392	38.7	858	13.9	896	14.5	580	9.4	58	0.9
Fauquier	107	1.7	20	0.3	37	0.6	50	0.8	-	-
Loudoun	237	3.8	83	1.3	99	1.6	51	0.8	4	0.1
Pr. William	648	10.5	208	3.4	255	4.1	171	2.8	14	0.2
Alexandria	282	4.6	52	0.8	117	1.9	92	1.5	21	0.3
Fairfax City	247	4.0	84	1.4	89	1.4	71	1.1	3	-
Falls Church	278	4.5	100	1.6	97	1.6	74	1.2	7	0.1
Manassas City/Park	1	-	-	-	1	-	-	-	-	-
Other VA	711	11.5	393	6.4	144	2.3	163	2.6	11	0.2
<b>Out-of-State</b>	<b>923</b>	<b>14.9</b>	<b>250</b>	<b>4.0</b>	<b>213</b>	<b>3.4</b>	<b>412</b>	<b>6.7</b>	<b>48</b>	<b>0.8</b>
Maryland	116	1.9	44	0.7	14	0.2	55	0.9	3	-
Washington, DC	33	0.5	4	0.1	6	0.1	20	0.3	3	-
Other	774	12.5	202	3.3	193	3.1	337	5.5	42	0.7
<b>University Total</b>	<b>6,178</b>	<b>100</b>	<b>2,110</b>	<b>34.2</b>	<b>2,036</b>	<b>32.9</b>	<b>1,818</b>	<b>29.4</b>	<b>214</b>	<b>3.5</b>

\* Percent of University Total for the column.

NEW ENROLLEES DEMOGRAPHIC CHARACTERISTICS  
FALL 1998

	Total	Gender		Ethnicity						Mean Age
		Female	Male	African Amer	Asian Amer	Hisp Amer	Nativ Amer	N-Res Alien	White Amer	
Freshmen										
First-Time	2,110	962	1,148	206	380	158	9	45	1,312	18.5
Transfer	284	123	161	35	24	23	2	17	183	22.3
Subtotal	2,394	1,085	1,309	241	404	181	11	62	1,495	19.0
Sophmores	752	338	414	75	84	47	3	33	510	25.0
Juniors	737	305	432	55	131	60	1	32	458	28.3
Seniors	263	122	141	19	36	23	1	8	176	31.1
<b>Undergraduate Total</b>	<b>4,146</b>	<b>1,850</b>	<b>2,296</b>	<b>390</b>	<b>655</b>	<b>311</b>	<b>16</b>	<b>135</b>	<b>2,639</b>	<b>22.5</b>
Masters										
Candidate	943	365	578	47	60	33	6	71	726	32.1
Provisional	206	76	130	19	11	8	1	20	147	33.1
Non-Degree	290	184	106	22	48	7	2	21	190	33.7
Certificate	157	43	114	11	6	5	-	1	134	42.1
Subtotal	1,596	668	928	99	125	53	9	113	1,197	33.5
Doctoral	222	127	95	13	20	3	-	55	131	35.3
<b>Graduate Total</b>	<b>1,818</b>	<b>795</b>	<b>1,023</b>	<b>112</b>	<b>145</b>	<b>56</b>	<b>9</b>	<b>168</b>	<b>1,328</b>	<b>33.7</b>
Law	214	125	89	4	15	8	2	-	185	28.2
<b>University Total</b>	<b>6,178</b>	<b>2,770</b>	<b>3,408</b>	<b>506</b>	<b>815</b>	<b>375</b>	<b>27</b>	<b>303</b>	<b>4,152</b>	<b>26.0</b>

NEW ENROLLEES BY LOCATION OF LAST INSTITUTION ATTENDED  
FALL 1998

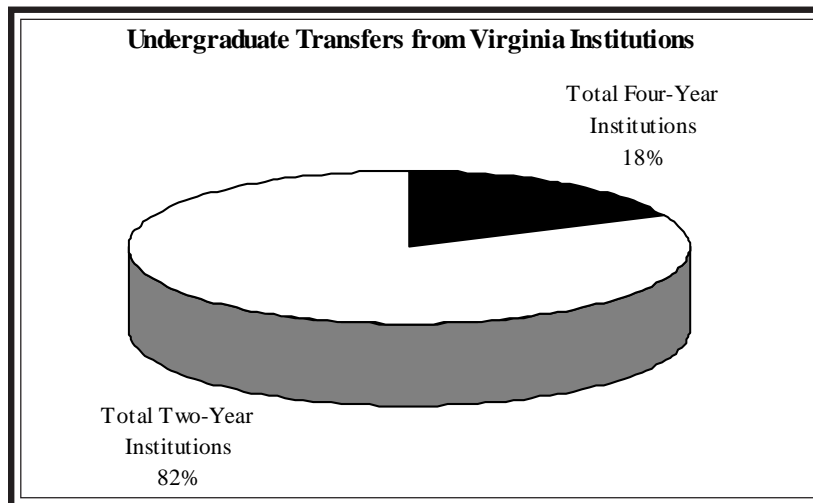
	First Time Freshmen*	Undergraduate Transfer	Law	Graduate	Total
Alabama	-	7	1	10	18
Alaska	-	-	-	1	1
Arizona	3	11	1	8	23
Arkansas	-	3	-	2	5
California	11	23	5	43	82
Colorado	3	11	3	18	35
Connecticut	15	6	2	19	42
Delaware	1	4	-	10	15
District of Columbia	9	41	17	78	145
Florida	6	26	6	29	67
Georgia	6	8	1	14	29
Hawaii	1	6	-	6	13
Idaho	-	5	-	1	6
Illinois	2	7	5	20	34
Indiana	2	1	4	19	26
Iowa	-	2	-	2	4
Kansas	-	-	2	6	8
Kentucky	-	4	-	3	7
Louisiana	1	6	-	8	15
Maine	2	1	1	5	9
Maryland	60	52	11	98	221
Massachusetts	8	9	4	30	51
Michigan	2	5	2	22	31
Minnesota	-	2	-	7	9
Mississippi	-	1	1	2	4
Missouri	-	4	1	7	12
Montana	2	1	1	3	7
Nebraska	-	3	-	6	9
Nevada	1	2	-	2	5
New Hampshire	2	2	1	5	10
New Jersey	25	14	1	17	57
New Mexico	1	2	-	3	6
New York	51	39	5	110	205
North Carolina	3	38	6	44	91
North Dakota	-	1	-	1	2
Ohio	4	13	3	35	55
Oklahoma	-	3	-	2	5
Oregon	-	3	-	5	8
Pennsylvania	19	22	16	111	168
Puerto Rico	1	1	-	3	5
Rhode Island	6	3	-	3	12
South Carolina	2	10	2	14	28
South Dakota	-	-	1	-	1
Tennessee	2	6	-	17	25
Texas	5	13	3	31	52
Utah	-	9	3	5	17
Vermont	-	2	2	8	12
Virgin Islands	1	1	-	-	2
Virginia	1,808	1,521	75	613	4,017
Washington	2	5	3	9	19
West Virginia	1	17	3	25	46
Wisconsin	-	4	1	16	21
Wyoming	-	2	-	2	4
Foreign	31	44	1	192	268
Unknown	11	10	20	68	109
<b>Total</b>	<b>2,110</b>	<b>2,036</b>	<b>214</b>	<b>1,818</b>	<b>6,178</b>

\*Location of high school attended

**UNDERGRADUATE TRANSFERS FROM VIRGINIA INSTITUTIONS  
FALL 1998**

<b>Four-Year Public Institutions</b>	
George Mason University*	44
Virginia Commonwealth University	44
Virginia Polytechnic Institute	35
James Madison University	21
University of Virginia	20
Mary Washington College	13
Radford University	11
Longwood College	6
Old Dominion University	5
Christopher Newport University	5
Other Four-Year Public	15
<b>Subtotal</b>	<b>219</b>
<b>Four-Year Private Institutions</b>	<b>49</b>
<b>Total Four-Year Institutions</b>	<b>268</b>
<b>Two-Year Public Institutions</b>	
Northern Virginia Community College; All Campuses	1,133
Lord Fairfax Community College	26
Germanna Community College	19
Tidewater Community College	11
Other Two-Year Public	33
<b>Subtotal</b>	<b>1,223</b>
<b>Two-Year Private Institutions</b>	<b>1</b>
<b>Total Two-Year Institutions</b>	<b>1,223</b>
<b>University Total</b>	<b>1,491</b>

*\*Students returning to GMU after graduation to pursue an additional undergraduate program are counted among undergraduate transfer students.*



NEW ENROLLEES BY ACADEMIC DIVISION  
FALL 1998

		Academic Division												
		Total	IART	CAS	ICSI	ICAR	GSE	IT&E	LAW	SOM	NCC	NURS	TIPP	UNDE
<b>Undergraduate Total</b>		<b>4,146</b>	<b>80</b>	<b>1,329</b>	-	-	<b>76</b>	<b>529</b>	-	<b>833</b>	<b>333</b>	<b>186</b>	-	<b>780</b>
Freshmen														
First-Time	2,110	47	563	-	-	27	268	-	319	199	46	-	-	641
Transfer	284	5	107	-	-	7	30	-	62	12	10	-	-	51
<i>Subtotal</i>	2,394	52	670	-	-	34	298	-	381	211	56	-	-	692
Sophmores	752	14	311	-	-	16	84	-	186	52	39	-	-	50
Juniors	737	10	269	-	-	13	93	-	225	53	47	-	-	27
Seniors	263	4	79	-	-	13	54	-	41	17	44	-	-	11
<b>Graduate Total</b>		<b>1,818</b>	<b>4</b>	<b>477</b>	<b>27</b>	<b>44</b>	<b>571</b>	<b>449</b>	-	<b>80</b>	-	<b>62</b>	<b>104</b>	-
Masters														
Provisional	206	1	58	-	1	96	23	-	-	-	11	16	-	-
Candidate	943	3	334	-	29	294	120	-	80	-	42	41	-	-
Certificate	157	-	11	3	-	105	13	-	-	-	1	24	-	-
Non-Degree	290	-	-	-	-	49	241	-	-	-	-	-	-	-
<i>Subtotal</i>	1,596	4	403	3	30	544	397	-	80	-	54	81	-	-
Doctoral	222	-	74	24	14	27	52	-	-	-	8	23	-	-
<b>First Professional</b>		214	-	-	-	-	-	214	-	-	-	-	-	-
<b>University Total</b>		<b>6,178</b>	<b>84</b>	<b>1,806</b>	<b>27</b>	<b>44</b>	<b>647</b>	<b>978</b>	<b>214</b>	<b>913</b>	<b>333</b>	<b>248</b>	<b>104</b>	<b>780</b>

List of Abbreviations:

- IART Institute of the Arts
- CAS College of Arts and Sciences
- ICSI Inst for Computational Sciences & Informatics
- ICAR Institute for Conflict Analysis & Resolution
- GSE Graduate School of Education
- IT&E School of Information Technology and Engineering
- LAW School of Law
- SOM School of Management
- NCC New Century College
- NURS College of Nursing and Health Science
- TIPP The Institute of Public Policy
- UNDE Undeclared Majors

**STUDENT FINANCIAL AID BY TYPE OF AWARD  
ACADEMIC YEARS 1995-96 THROUGH 1998-99**

	1995-96	1996-97	1997-98	As of 11/23/98 1998-99
<b>Student Aid Grand Total</b>	\$54,587,861	\$59,998,655	\$63,920,278	\$62,259,942
Number of Students	8,016	8,850	9,439	8,919
Average Award	\$6,810	\$6,779	\$6,734	\$6,918
<b>Federal Aid</b>	\$41,688,121	\$47,025,381	\$50,170,135	\$48,784,447
<b>Pell Grant</b>				
Total Aid Awarded	\$3,301,133	3,918,774	\$4,489,860	\$5,766,313
Number of Awards	2,343	2,583	2,792	2,935
Average Award	\$1,409	\$1,517	\$1,608	\$1,956
<b>Federal Perkins Loan</b>				
Total Aid Awarded	\$486,759	\$433,183	\$509,020	\$537,267
Number of Awards	262	228	271	328
Average Award	\$1,858	\$1,900	\$1,878	\$1,638
<b>Supplemental Grants</b>				
Total Aid Awarded	\$472,560	\$506,077	\$654,875	\$521,900
Number of Awards	2,048	2,088	2,618	2,103
Average Award	\$231	\$242	\$250	\$248
<b>Federal Work-Study</b>				
Total Aid Awarded	\$364,535	\$551,242	\$703,385	\$1,184,134
Number of Awards	263	331	447	478
Average Award	\$1,386	\$1,665	\$1,574	\$2,477
<b>Federal Stafford Loan*</b>				
Total Aid Awarded	\$23,982,876	\$26,280,548	\$27,258,798	\$25,838,482
Number of Awards	5,899	6,324	6,623	6,158
Average Award	\$4,066	\$4,156	\$4,116	\$4,196
<b>Parent Loan</b>				
Total Aid Awarded	\$3,366,575	\$3,578,127	\$3,491,645	\$3,564,866
Number of Awards	602	649	620	595
Average Award	\$5,592	\$5,513	\$5,632	\$5,991
<b>Unsubsidized Stafford Loans**</b>				
Total Aid Awarded	\$9,713,683	\$11,757,430	\$13,062,552	\$11,371,485
Number of Awards	2,164	2,804	2,816	2,363
Average Award	\$4,489	\$4,193	\$4,639	\$4,812
<b>State Aid Total</b>	\$5,282,558	\$5,989,468	\$5,070,626	\$5,671,121
<b>Undergraduate</b>				
Total Aid Awarded	\$4,359,389	\$5,204,504	\$4,365,614	\$5,349,808
Number of Awards	1,874	2,155	2,068	1,845
Average Award	\$2,188	\$2,415	\$2,446	\$3,074

\* Program changed to Federal Direct Stafford Loan for 1995-96.

\*\* Program changed to Federal Direct Unsubsidized Stafford Loan for 1995-96.

*continued next page*

**STUDENT FINANCIAL AID BY TYPE OF AWARD  
ACADEMIC YEARS 1995-96 THROUGH 1998-99**

	1995-96	1996-97	1997-98	As of 11/23/98 1998-99
<b>College Scholarship Assistance</b>				
Total Aid Awarded	\$253,000	\$223,000	\$241,882	\$9,850
Number of Awards	159	134	135	6
Average Award	\$1,591	\$1,664	\$1,792	\$1,642
<b>Tuition Remission</b>				
Total Aid Awarded	\$500,900	\$392,964	\$294,130	\$309,313
Number of Awards	148	107	83	81
Average Award	\$3,384	\$3,672	\$3,544	\$3,819
<b>Virginia Transfer Grant</b>				
Total Aid Awarded	\$133,269	\$133,000	\$133,000	\$2,150
Number of Awards	39	56	70	1
Average Award	\$3,417	\$2,375	\$1,900	\$2,150
<b>Undergraduate Student Financial</b>				
Total Aid Awarded	\$36,000	\$36,000	\$36,000	****
Number of Awards	40	39	37	****
Average Award	\$900	\$923	\$973	****
<b>Other Aid Total</b>	\$7,617,182	\$7,768,052	\$8,679,517	\$7,804,374
<b>Institutional Scholarships***</b>				
Total Aid Awarded	\$6,243,522	\$6,298,111	\$6,928,013	\$6,153,054
Number of Awards	1,402	1,257	1,427	1,245
Average Award	\$4,453	\$5,010	\$4,610	\$4,499
<b>Other Grants and Scholarships</b>				
Total Aid Awarded	\$881,749	\$917,543	\$986,923	\$1,013,784
Number of Awards	576	566	626	569
Average Award	\$1,539	\$1,621	\$1,577	\$1,782
<b>Other Loan Program</b>				
Total Aid Awarded	\$491,911	\$552,398	\$764,581	\$637,536
Number of Awards	77	88	129	104
Average Award	\$6,388	\$6,277	\$5,927	\$6,130

\*\*\* Awarded on merit.

\*\*\*\* None awarded to date.





TRENDS IN STUDENT DEMOGRAPHICS  
FALL 1994 THROUGH FALL 1998

	1994	1995*	1996*	1997	1998
<b>Total Headcount</b>	<b>21,774</b>	<b>24,172</b>	<b>24,368</b>	<b>23,826</b>	<b>24,010</b>
<i>Gender</i>					
Female	11,687	13,676	13,781	13,350	13,414
Male	10,087	10,496	10,587	10,476	10,596
<i>Ethnicity</i>					
African American	1,409	1,674	1,851	1,863	1,957
Asian American	2,453	2,649	2,812	2,897	2,939
Hispanic American	938	1,114	1,143	1,194	1,290
Native American	81	92	86	82	93
Non-Res. Alien	822	950	1,071	1,172	1,167
White American	16,071	17,693	17,405	16,618	16,564
<i>Residency</i>					
Northern Virginia	17,147	19,115	18,571	17,894	18,957
Other Virginia	2,211	2,166	2,825	3,038	2,153
Out-of-State	2,416	2,891	3,026	2,894	2,900
<i>Age</i>					
<i>Undergraduate</i>					
Under 25	9,898	9,783	9,873	9,942	10,175
25 to 30	1,433	1,700	1,719	1,806	1,864
Over 30	1,998	2,287	2,230	2,175	2,172
Unknown	2	4	9	13	23
<i>Professional (Law)</i>					
Under 25	272	158	149	169	192
25 to 30	215	301	302	302	291
Over 30	193	239	240	244	258
<i>Graduate</i>					
Under 25	1,559	1,145	1,136	1,084	936
25 to 30	2,334	2,776	2,759	2,699	2,528
Over 30	3,861	5,742	5,932	5,368	5,540
Unknown	9	37	19	24	31

\* Due to flexible scheduling, beginning in Fall 1995, some end-of-summer enrollments were reported in the fall census. This reporting method created high enrollments for Fall 1995 and Fall 1996. Per directions from SCHEV, these enrollments are now being counted in the summer. Therefore, the data for Fall 1997 and 1998 appear to show a drop from Fall 1996, when this is simply a result of a change in reporting methods. Annual data are not affected.

**STUDENT DEMOGRAPHICS BY ACADEMIC DIVISION  
FALL 1998**

		Total	Gender		Ethnicity						
			Female	Male	Afric Amer	Asian Amer	Hisp Amer	Native Amer	N-Res Alien	White Amer	Mean Age
Institute of the Arts	Undergraduate	318	208	110	28	30	26	1	11	222	23.4
	Graduate	40	25	15	2	1	2	-	2	33	33.1
	<b>Total</b>	<b>358</b>	<b>233</b>	<b>125</b>	<b>30</b>	<b>31</b>	<b>28</b>	<b>1</b>	<b>13</b>	<b>255</b>	<b>24.4</b>
College of Arts and Sciences	Undergraduate	5,458	3,375	2,083	495	537	391	24	157	3,854	24.2
	Graduate	1,554	884	670	61	57	51	7	110	1,268	33.8
	<b>Total</b>	<b>7,012</b>	<b>4,259</b>	<b>2,753</b>	<b>556</b>	<b>594</b>	<b>442</b>	<b>31</b>	<b>267</b>	<b>5,122</b>	<b>26.3</b>
Institute for Computational Science and Informatics	Graduate	126	27	99	5	18	4	-	21	78	37.1
	<b>Total</b>	<b>126</b>	<b>27</b>	<b>99</b>	<b>5</b>	<b>18</b>	<b>4</b>	<b>-</b>	<b>21</b>	<b>78</b>	<b>37.1</b>
Institute for Conflict Analysis & Resolution	Graduate	116	64	52	8	4	4	-	21	79	34.6
	<b>Total</b>	<b>116</b>	<b>64</b>	<b>52</b>	<b>8</b>	<b>4</b>	<b>4</b>	<b>-</b>	<b>21</b>	<b>79</b>	<b>34.6</b>
Graduate School of Education	Undergraduate	355	187	168	24	16	13	-	8	294	24.3
	Graduate	1,974	1,518	456	152	45	63	6	23	1,685	36.9
	<b>Total</b>	<b>2,329</b>	<b>1,705</b>	<b>624</b>	<b>176</b>	<b>61</b>	<b>76</b>	<b>6</b>	<b>31</b>	<b>1,979</b>	<b>35.0</b>
School of Information Technology & Engineering	Undergraduate	1,423	304	1,119	107	432	93	4	85	702	24.4
	Graduate	1,777	502	1,275	105	303	34	5	333	997	33.7
	<b>Total</b>	<b>3,200</b>	<b>806</b>	<b>2,394</b>	<b>212</b>	<b>735</b>	<b>127</b>	<b>9</b>	<b>418</b>	<b>1,699</b>	<b>29.6</b>
School of Law	Professional	741	292	449	19	49	21	4	1	647	29.6
	<b>Total</b>	<b>741</b>	<b>292</b>	<b>449</b>	<b>19</b>	<b>49</b>	<b>21</b>	<b>4</b>	<b>1</b>	<b>647</b>	<b>29.6</b>
School of Management	Undergraduate	3,114	1,553	1,561	271	794	230	15	164	1,640	24.2
	Graduate	582	191	391	28	42	12	1	26	473	32.9
	<b>Total</b>	<b>3,696</b>	<b>1,744</b>	<b>1,952</b>	<b>299</b>	<b>836</b>	<b>242</b>	<b>16</b>	<b>190</b>	<b>2,113</b>	<b>25.6</b>
New Century College	Undergraduate	1,114	749	365	122	94	88	10	27	773	27.0
	<b>Total</b>	<b>1,114</b>	<b>749</b>	<b>365</b>	<b>122</b>	<b>94</b>	<b>88</b>	<b>10</b>	<b>27</b>	<b>773</b>	<b>27.0</b>
College of Nursing and Health Science	Undergraduate	568	520	48	82	63	27	1	13	382	28.7
	Graduate	282	264	18	23	15	7	1	15	221	40.8
	<b>Total</b>	<b>850</b>	<b>784</b>	<b>66</b>	<b>105</b>	<b>78</b>	<b>34</b>	<b>2</b>	<b>28</b>	<b>603</b>	<b>32.7</b>
The Institute of Public Policy	Graduate	377	174	203	30	31	24	3	62	227	35.1
	<b>Total</b>	<b>377</b>	<b>174</b>	<b>203</b>	<b>30</b>	<b>31</b>	<b>24</b>	<b>3</b>	<b>62</b>	<b>227</b>	<b>35.1</b>
Undeclared Majors	Undergraduate	1,453	797	656	124	246	109	3	28	943	20.2
	<b>Total</b>	<b>1,453</b>	<b>797</b>	<b>656</b>	<b>124</b>	<b>246</b>	<b>109</b>	<b>3</b>	<b>28</b>	<b>943</b>	<b>20.2</b>
Extended Studies	Undergraduate	387	200	187	29	39	15	2	27	275	30.2
	Graduate	2,190	1,553	637	234	113	72	6	32	1,733	37.2
	<b>Total</b>	<b>2,577</b>	<b>1,753</b>	<b>824</b>	<b>263</b>	<b>152</b>	<b>87</b>	<b>8</b>	<b>59</b>	<b>2,008</b>	<b>36.1</b>
Guest Matriculants	Undergraduate	44	21	23	5	8	3	-	-	28	21.2
	Graduate	17	6	11	3	2	1	-	1	10	29.9
	<b>Total</b>	<b>61</b>	<b>27</b>	<b>34</b>	<b>8</b>	<b>10</b>	<b>4</b>	<b>-</b>	<b>1</b>	<b>38</b>	<b>23.6</b>
University Total	Undergraduate	14,234	7,914	6,320	1,287	2,259	995	60	520	9,113	24.4
	Graduate	9,035	5,208	3,827	651	631	274	29	646	6,804	35.5
	Professional	741	292	449	19	49	21	4	1	647	29.6
	<b>Total</b>	<b>24,010</b>	<b>13,414</b>	<b>10,596</b>	<b>1,957</b>	<b>2,939</b>	<b>1,290</b>	<b>93</b>	<b>1,167</b>	<b>16,564</b>	<b>28.7</b>

**UNDERGRADUATE STUDENT ENROLLMENT BY ACADEMIC DIVISION  
FALL 1998**

	Headcount		Entry Status		Course Load		Class Level					FTE	
	No.	% of Total	New	Return	Full-Time	Part-Time	Fresh-man	Sopho-more	Junior	Senior	Non-Degree	Total	% of Total
<b>Institute of the Arts</b>	318	2.2	80	238	262	56	81	73	91	73	-	287	2.5
<b>College of Arts and Sciences</b>	5,458	38.3	1,329	4,129	4,002	1,456	951	1,119	1,516	1,872	-	4,463	39.1
<b>Graduate School of Education</b>	355	2.5	76	279	281	74	50	67	82	156	-	296	2.6
<b>School of Information Technology &amp; Engineering</b>	1,423	10.0	529	894	976	447	413	236	318	456	-	1,100	9.6
<b>School of Management</b>	3,114	21.9	833	2,281	2,243	871	580	676	910	948	-	2,511	22.0
<b>New Century College</b>	1,114	7.8	333	781	753	361	246	276	293	299	-	883	7.7
<b>College of Nursing and Health Science</b>	568	4.0	186	382	364	204	86	102	127	253	-	428	3.7
<b>Undeclared Majors</b>	1,453	10.2	780	673	1,265	188	989	338	107	19	-	1,278	11.2
<b>Extended Studies</b>	387	2.7	281	106	70	317	-	-	-	-	387	164	1.4
<b>Guest Matriculants</b>	44	0.3	39	5	6	38	-	-	-	-	44	18	0.2
<b>Undergraduate Total</b>	<b>14,234</b>	<b>100</b>	<b>4,466</b>	<b>9,768</b>	<b>10,222</b>	<b>4,012</b>	<b>3,396</b>	<b>2,887</b>	<b>3,444</b>	<b>4,076</b>	<b>431</b>	<b>11,428</b>	<b>100</b>

**GRADUATE STUDENT ENROLLMENT BY ACADEMIC DIVISION  
FALL 1998**

	Headcount		Course Load		Class Level					FTE	
	No.	% of Total	Part-Time	Full-Time	Doc. Cand.	Pre-Cand.	Masters	Cert.	Non-Degree	Total	% of Total
Institute of the Arts	40	0.4	33	7	-	-	40	-	-	22	0.6
College of Arts and Sciences	1,554	17.2	1,204	350	81	300	1,132	38	3	713.8	19
Institute for Computational Sciences & Informatics	126	1.4	102	24	34	89	-	3	-	51.3	1.4
Institute for Conflict Analysis & Resolution	116	1.3	68	48	1	59	56	-	-	61.3	1.6
Graduate School of Education	1,974	21.8	1,607	367	58	212	1,495	115	94	885.5	23.6
School of Information Technology & Engineering	1,777	19.7	1,588	189	30	298	858	38	553	682.8	18.2
School of Management	582	6.4	443	139	-	-	582	-	-	342.8	9.1
College of Nursing and Health Science	282	3.1	214	68	-	47	233	2	-	143.8	3.8
The Institute of Public Policy	377	4.2	288	89	15	96	240	25	1	176.8	4.7
Extended Studies	2,190	24.2	2,105	85	-	-	-	-	2,190	665.6	17.7
Guest Matriculants	17	0.2	17	-	-	-	-	-	17	5.3	0.1
<b>Graduate Total</b>	<b>9,035</b>	<b>100</b>	<b>7,669</b>	<b>1,366</b>	<b>219</b>	<b>1,101</b>	<b>4,636</b>	<b>221</b>	<b>2,858</b>	<b>3750.7</b>	<b>100</b>

**LAW SCHOOL ENROLLMENT  
FALL 1998**

	Headcount		Course Load		Class Level				FTE	
	No.	% of Total	Full-Time	Part-Time	1st Year	2nd Year	3rd Year	4th Year	Total	% of Total
Day	379	51.1	379	-	118	129	132	-	364.7	59.6
Evening	362	48.9	-	362	93	88	74	107	246.7	40.4
<b>School of Law Total</b>	<b>741</b>	<b>100.0</b>	<b>379</b>	<b>362</b>	<b>211</b>	<b>217</b>	<b>206</b>	<b>107</b>	<b>611.5</b>	<b>100.0</b>

STUDENT ENROLLMENT BY DIVISION, DEPARTMENT AND DEGREE  
FALL 1998

	Total	Gender		Ethnicity						
		Female	Male	Afric	Asian	Hisp	Native	N-Res	White	
				Amer	Amer	Amer	Amer	Alien	Amer	
<b>Institute of the Arts</b>										
Division of Studio Art	BA Art (Studio)	172	93	79	12	23	18	-	10	109
	BFA Art (Studio)	12	8	4	-	1	1	-	-	10
	<i>Subtotal</i>	184	101	83	12	24	19	-	10	119
Division of Dance	BA Dance	28	27	1	7	-	2	-	-	19
	BFA Dance	27	27	-	3	2	-	-	-	22
	MFA Dance	8	8	-	-	-	-	-	1	7
	<i>Subtotal</i>	63	62	1	10	2	2	-	1	48
Visual Information	MA Visual Information Technology	17	9	8	2	-	1	-	1	13
	MFA Visual Information Technology	15	8	7	-	1	1	-	-	13
	<i>Subtotal</i>	32	17	15	2	1	2	-	1	26
Division of Theater	BA Theater	79	53	26	6	4	5	1	1	62
	<b>IART Total</b>	<b>358</b>	<b>233</b>	<b>125</b>	<b>30</b>	<b>31</b>	<b>28</b>	<b>1</b>	<b>13</b>	<b>255</b>
<b>College of Arts and Sciences</b>										
Area Studies	BA Area Studies (European)*	1	1	-	-	-	-	-	-	1
Biology	BA Biology	142	86	56	12	23	12	-	3	92
	BS Biology	627	384	243	51	150	30	2	28	366
	BS Medical Technology	45	25	20	12	4	2	-	3	24
	MS Biology	64	35	29	4	1	1	-	2	56
	PhD Environmental Science & Public Policy	103	52	51	-	3	4			82
	<i>Subtotal</i>	981	582	399	83	181	49	2	46	620
Chemistry	BA Chemistry	13	8	5	-	3	1	-	2	7
	BS Chemistry	69	41	28	7	13	3	1	2	43
	MS Chemistry	16	7	9	1	6	1	-	-	8
	<i>Subtotal</i>	98	56	42	8	22	5	1	4	58
Communication	BA Communication	740	466	274	79	56	46	4	19	536
Economics	BA Economics	74	29	45	8	6	11	-	5	44
	BS Economics	58	20	38	-	8	6	-	4	40
	MA Economics	22	6	16	-	-	1	-	5	16
	PhD Economics	117	33	84	1	6	-	-	44	66
	<i>Subtotal</i>	271	88	183	9	20	18	-	58	166
English	BA English	526	369	157	45	26	20	4	15	416
	MA English (Linguistics)	27	19	8	-	1	-	-	3	23
	MA English (Literature)	33	20	13	1	-	1	-	-	31
	MA English (Professional Writing & Editing)	48	42	6	2	-	1	-	-	45
	MA English (Teaching Writing & Literature)	19	15	4	-	-	-	-	-	19
	MFA Creative Writing	94	63	31	8	3	-	1	2	80
	CERT Teaching English as Second Language	16	12	4	-	1	1	-	1	13
	<i>Subtotal</i>	763	540	223	56	31	23	5	21	627

\* Degree program is being phased out and no longer accepts new students.

continued next page

STUDENT ENROLLMENT BY DIVISION, DEPARTMENT AND DEGREE  
FALL 1998

		Total	Gender		Ethnicity					
			Female	Male	Afric Amer	Asian Amer	Hisp Amer	Native Amer	N-Res Alien	White Amer
Modern and Classical Languages	BA Modern & Classical Languages	3	3	-	-	1	-	-	-	2
	BA Modern & Classical Languages (Classical)	6	1	5	-	-	1	-	-	5
	BA Modern & Classical Languages (French)	28	23	5	3	1	4	-	2	18
	BA Modern & Classical Languages (German)	9	5	4	-	-	-	-	-	9
	BA Modern & Classical Languages (Russian)	6	4	2	-	1	-	-	-	5
	BA Modern & Classical Languages (Spanish)	76	57	19	3	3	26	-	2	42
	MA Modern & Classical Languages	37	29	8	-	2	10	-	1	24
	CERT Translation*	4	3	1	-	-	1	-	-	3
	<i>Subtotal</i>	169	125	44	6	8	42	-	5	108
Geography and Earth Sciences	BA Geography	34	8	26	2	1	1	-	3	27
	BA Geology	11	3	8	1	-	-	-	-	10
	BS Earth Science	41	17	24	1	1	1	1	-	37
	BS Geography	12	4	8	-	1	-	-	-	11
	BS Geology*	3	1	2	-	-	2	-	-	1
	MS Geographic & Cartographic Sciences	48	10	38	-	-	-	-	-	48
	<i>Subtotal</i>	149	43	106	4	3	4	1	3	134
History and Art History	BA Art (History)	40	36	4	-	2	1	-	1	36
	BA History	263	110	153	15	8	14	1	1	224
	MA History	122	57	65	2	3	3	2	2	110
	<i>Subtotal</i>	425	203	222	17	13	18	3	4	370
Interdisciplinary Studies, Graduate	MAIS Interdisciplinary Studies(Individ)	108	71	37	3	7	3	2	5	88
	MAIS Interdisciplinary Studies(Liberal)	17	5	12	-	1	1	-	1	14
	<i>Subtotal</i>	125	76	49	3	8	4	2	6	102
Mathematical Sciences	BA Mathematics	24	18	6	1	4	-	-	2	17
	BS Mathematics	52	33	19	7	9	1	-	1	34
	MS Mathematics	24	6	18	2	2	-	-	1	19
	<i>Subtotal</i>	100	57	43	10	15	1	-	4	70
Music	BA Music	45	23	22	2	5	4	-	3	31
	BM Music	128	82	46	6	9	4	-	3	106
	MA Music	36	23	13	1	3	-	-	-	32
	<i>Subtotal</i>	209	128	81	9	17	8	-	6	169
Philosophy and Religious Studies	BA Philosophy	46	15	31	3	4	3	-	1	35
Physics	BA Physics*	3	2	1	-	-	-	-	-	3
	BS Physics	33	8	25	2	2	-	1	3	25
	MS Applied and Engineering Physics	13	4	9	-	-	1	-	-	12
	<i>Subtotal</i>	49	14	35	2	2	1	1	3	40

\* Degree program is being phased out and no longer accepts new students.

continued next page

STUDENT ENROLLMENT BY DIVISION, DEPARTMENT AND DEGREE  
FALL 1998

		Total	Gender		Ethnicity					
			Female	Male	Afric Amer	Asian Amer	Hisp Amer	Native Amer	N-Res Alien	White Amer
Program for Social & Organizational Learning	MS Professional Studies: Organizational Learning	51	30	21	4	-	1	-	6	40
Psychology	BA Psychology	641	531	110	70	59	57	2	15	438
	BS Psychology	373	283	90	33	31	23	2	5	279
	MA Psychology (Exper Neuropsychology)	12	9	3	-	-	1	-	-	11
	MA Psychology (Human Factors Eng.)	12	4	8	-	1	-	-	-	-
	MA Psychology (Indust/Organizational)	23	13	10	1	-	2	-	1	19
	MA Psychology ( Life-Span Developmental)	10	7	3	1	1	1	-	1	6
	MA Psychology (School)	23	21	2	3	1	1	-	2	16
	PhD Psychology	8	8	-	1	1	-	-	-	6
	PhD Psychology (Applied Experimental)	3	1	2	-	-	-	-	-	3
	PhD Psychology (Clinical)	48	34	14	-	3	3	-	-	42
	PhD Psychology (Developmental)	27	25	2	1	-	1	-	-	25
	PhD Psychology (Human Factors Eng.)	10	5	5	-	1	-	-	1	8
	PhD Psychology (Indust/Organizational)	30	22	8	1	1	1	-	2	25
	<i>Subtotal</i>	1,220	963	257	111	99	90	4	27	889
Public and International Affairs	BA Government and Politics**	239	116	123	29	15	15	2	3	175
	BA International Studies**	212	124	88	14	32	29	-	16	121
	BA Government and International Politics	228	131	97	29	18	30	-	5	146
	BS Administration of Justice	260	94	166	26	14	16	1	1	202
	BS Public Administration	79	27	52	13	7	-	2	-	57
	MPA Public Administration	161	96	65	5	5	5	2	2	142
	DPA Public Administration	3	1	2	-	-	-	-	1	2
	CERT Nonprofit Management	18	11	7	2	1	-	-	-	15
	<i>Subtotal</i>	1,200	600	600	118	92	95	7	28	860
Russian Studies	BA Russian Studies	17	7	10	1	-	-	-	2	14
Sociology and Anthropology	BA Anthropology	90	62	28	-	9	8	-	-	73
	BA Sociology	152	114	38	20	11	16	1	7	97
	MA Sociology	34	25	9	3	1	-	-	3	27
	PhD Cultural Studies	32	25	7	2	-	1	-	4	25
	<i>Subtotal</i>	308	226	82	25	21	25	1	14	222
Study of the Americas	BA Study of the Americas*	9	4	5	-	-	4	-	-	5
Telecommunications	MA Telecommunications	81	35	46	8	2	5	-	10	56
	<b>CAS Total</b>	<b>7,012</b>	<b>4,259</b>	<b>2,753</b>	<b>556</b>	<b>594</b>	<b>442</b>	<b>31</b>	<b>267</b>	<b>5,122</b>
<b>Institute for Computational Sciences &amp; Informatics</b>	PhD Computational Science & Informatics	123	26	97	5	17	4	-	21	76
	CERT Computational Techniques & Apps.	3	1	2	-	1	-	-	-	2
	<b>ICSI Total</b>	<b>126</b>	<b>27</b>	<b>99</b>	<b>5</b>	<b>18</b>	<b>4</b>	<b>-</b>	<b>21</b>	<b>78</b>

\* Degree program is being phased out and no longer accepts new students.

\*\* Program reorganized into BA Government and International Politics

continued next page

STUDENT ENROLLMENT BY DIVISION, DEPARTMENT AND DEGREE  
FALL 1998

		Total	Gender		Ethnicity					
			Female	Male	Afric Amer	Asian Amer	Hispanic Amer	Native Amer	N-Res Alien	White Amer
<b>Institute for Conflict Analysis &amp; Resolution</b>										
	MS Conflict Analysis & Resolution	56	31	25	3	4	4	-	8	37
	PhD Conflict Analysis and Resolution	60	33	27	5	-	-	-	13	42
	<b>ICAR Total</b>	<b>116</b>	<b>64</b>	<b>52</b>	<b>8</b>	<b>4</b>	<b>4</b>	<b>-</b>	<b>21</b>	<b>79</b>
<b>Graduate School of Education</b>										
Center for	DA Community College Education	126	53	73	21	3	4	1	1	96
Community College	DAED Education	2	2	-	1	-	-	-	-	1
Education	DIPL Community College Education	3	1	2	-	-	-	-	-	3
	CERT Community College Education	8	2	6	2	-	1	-	-	5
	CERT Instructional Technology	100	94	6	7	1	3	-	-	89
	<i>Subtotal</i>	239	152	87	31	4	8	1	1	194
	MA Professional Studies: Teaching Track	230	199	31	24	4	1	-	-	201
Education	MED Counseling and Development	178	141	37	9	4	10	-	5	150
	MED C & I (Early Childhood)	153	143	10	7	8	9	-	2	-
	MED C & I (Adult Education)	24	20	4	3	-	-	-	-	21
	MED C & I (Biling/Multicult Education)	21	18	3	1	2	4	-	1	13
	MED C & I (English as a Second Language)	36	34	2	2	3	-	-	4	27
	MED C & I (Middle Education)	141	114	27	7	3	7	1	-	123
	MED C & I (Reading)	4	4	-	-	-	-	-	-	4
	MED C & I (Secondary Education)	181	110	71	4	3	8	-	-	166
	MED Education Leadership	198	124	74	29	2	4	1	-	162
	MED Instructional Technology	111	82	29	4	-	3	-	2	102
	MED Special Education	279	251	28	17	10	3	3	6	240
	PhD Education	142	105	37	12	2	5	-	1	122
	<i>Subtotal</i>	1,937	1,497	440	150	45	62	6	22	1,652
Health and Human	BS Health, Fitness & Recreation Resources	204	118	86	12	13	7	-	6	166
Services	BSED Physical Education	151	69	82	12	3	6	-	2	128
	MS Exercise Science & Health	31	15	16	2	-	1	-	1	27
	CERT Gerontology	6	6	-	-	-	-	-	-	6
	<i>Subtotal</i>	392	208	184	26	16	14	-	9	327
	<b>GSE Total</b>	<b>2,329</b>	<b>1,705</b>	<b>624</b>	<b>176</b>	<b>61</b>	<b>76</b>	<b>6</b>	<b>31</b>	<b>1,979</b>
<b>School of Information Technology and Engineering</b>										
Applied and	MS Statistical Science	50	19	31	5	3	1	1	2	38
Engineering Statistics	CERT Federal Statistical System	4	1	3	-	1	-	-	-	3
	<i>Subtotal</i>	54	20	34	5	4	1	1	2	41
Civil, Environ. &	BS Urban Systems Engineering	59	11	48	7	5	6	1	3	37
Infrastructure Engr.	MS Urban Systems Engineering	30	7	23	1	2	-	-	5	22
	<i>Subtotal</i>	89	18	71	8	7	6	1	8	59
Computer Science	BS Computer Science	892	215	677	56	311	40	1	49	435
	MS Computer Science	348	98	250	12	84	7	-	96	149
	<i>Subtotal</i>	1,240	313	927	68	395	47	1	145	584

\* Degree program is being phased out and no longer accepts new students.

continued next page



STUDENT ENROLLMENT BY DIVISION, DEPARTMENT AND DEGREE  
FALL 1998

	Total	Gender		Ethnicity						
		Female	Male	Afric	Asian	Hisp	Native	N-Res	White	
				Amer	Amer	Amer	Amer	Alien	Amer	
Electrical and Computer Engineering	BPRE Engineering	9	2	7	-	3	1	-	2	3
	BS Computer Engineering	30	3	27	2	10	3	-	1	14
	BS Electrical Engineering	328	45	283	35	75	30	2	22	164
	MS Electrical Engineering	266	48	218	18	45	7	-	34	162
	CERT Communications & Networking	4	1	3	1	-	1	-	-	2
	<i>Subtotal</i>	637	99	538	56	133	42	2	59	345
Information and Software Systems Engineering	MS Information Systems	368	145	223	18	93	4	1	65	187
	MS Software Systems Engineering	154	57	97	11	20	7	-	12	104
	CERT Information Engineering	5	1	4	-	1	-	-	-	4
	CERT Software Systems Engineering	1	-	1	-	1	-	-	-	-
	<i>Subtotal</i>	528	203	325	29	115	11	1	77	295
Operations Research and Engineering	MS Operations Research & Mgmt Science	57	15	42	1	3	2	-	6	45
Office of the Dean	PhD Information Technology	330	70	260	19	33	2	1	98	177
	NONDG Not Declared	20	3	17	-	3	-	1	4	12
	<i>Subtotal</i>	350	73	277	19	36	2	2	102	189
Systems Engineering	BS Systems Engineering	105	28	77	7	28	13	-	8	49
	MS Systems Engineering	114	29	85	13	10	3	-	11	77
	CERT Cmnd, Cntrl, Comm & Intg Syst Engr	1	-	1	-	1	-	-	-	-
	CERT Sys Eng for Comp Info & Soft Int Sys	25	8	17	6	3	-	1	-	15
	<i>Subtotal</i>	245	65	180	26	42	16	1	19	141
	<b>IT&amp;E Total</b>	<b>3,200</b>	<b>806</b>	<b>2,394</b>	<b>212</b>	<b>735</b>	<b>127</b>	<b>9</b>	<b>418</b>	<b>1,699</b>
<b>School of Law</b>	JD Law	446	212	234	10	30	10	2	1	393
	JD Law (Corporate & Securities)	46	12	34	2	3	-	-	-	41
	JD Law (Intellectual Property)	113	18	95	4	12	6	-	-	91
	JD Law (International Business)	49	17	32	-	3	4	1	-	41
	JD Law (Litigation)	58	23	35	3	-	1	-	-	54
	JD Law (Regulatory)	29	10	19	-	1	-	1	-	27
	<b>Law Total</b>	<b>741</b>	<b>292</b>	<b>449</b>	<b>19</b>	<b>49</b>	<b>21</b>	<b>4</b>	<b>1</b>	<b>647</b>
<b>School of Management</b>	BPRE Accounting	264	166	98	39	54	20	4	6	141
	BPRE Business Administration	197	89	108	10	40	19	-	13	115
	BPRE Decision Science & Mgt Info Sys	384	185	199	33	145	18	3	25	160
	BPRE Finance	115	55	60	15	18	4	-	5	73
	BPRE Management	184	88	96	17	25	13	2	9	118
	BPRE Marketing	159	87	72	10	23	13	-	15	98
	BPRE Not Declared	153	75	78	15	14	12	1	9	102
	BS Accounting	323	215	108	33	73	32	1	10	174
	BS Business Administration	230	92	138	14	51	22	2	9	132
	BS Decision Science & Mgt Info. Sys	625	276	349	47	266	37	1	35	
	BS Finance	161	56	105	12	37	15	1	14	82
	BS Management	134	74	60	13	13	9	-	7	92
	BS Marketing	174	93	81	12	34	15	-	6	107

\* Degree program is being phased out and no longer accepts new students.

continued next page

STUDENT ENROLLMENT BY DIVISION, DEPARTMENT AND DEGREE  
FALL 1998

	Total	Gender		Ethnicity					
		Female	Male	Afric	Asian	Hispanic	Native	N-Res	White
				Amer	Amer	Amer	Amer	Alien	Amer
BS Not Declared	11	2	9	1	1	1	-	1	7
MBA Business Administration	210	64	146	10	18	3	-	16	163
MBA Executive Business Administration	55	20	35	6	2	1	-	3	43
MBA Fast Track Business Administration	253	79	174	8	14	7	-	4	
MS Accounting*	24	12	12	-	4	-	1	2	17
MS Professional Studies Technology Mgt.	24	7	17	3	-	-	-	1	20
MS Taxation*	16	9	7	1	4	1	-	-	10
<b>SOM Total</b>	<b>3,696</b>	<b>1,744</b>	<b>1,952</b>	<b>299</b>	<b>836</b>	<b>242</b>	<b>16</b>	<b>190</b>	<b>2,113</b>
<b>New Century College</b>									
BPRE Individualized Studies	183	128	55	11	4	14	3	2	149
BPRE Interdisciplinary Studies	10	10	-	-	-	-	1	-	9
BAIN Integrative Studies	476	291	185	61	56	41	2	12	304
BAIS Interdisciplinary Studies	13	6	7	-	-	-	-	-	13
BIS Individualized Studies	133	92	41	9	5	6	3	7	103
BS Social Work	151	138	13	20	5	11	-	2	113
BSIN Integrative Studies	148	84	64	21	24	16	1	4	82
<b>NCC Total</b>	<b>1,114</b>	<b>749</b>	<b>365</b>	<b>122</b>	<b>94</b>	<b>88</b>	<b>10</b>	<b>27</b>	<b>773</b>
<b>College of Nursing and Health Science</b>									
BPRE Nursing	178	164	14	34	28	11	-	3	102
BS Health Science	1	1	-	-	-	-	-	-	1
BSN Nursing	389	355	34	48	35	16	1	10	279
MS Professional Studies: Health Sci.Admin.	7	4	3	-	-	1	-	-	6
MSN Advanced Clinical Nursing	46	45	1	5	2	1	1	3	34
MSN Nurse Practitioner	99	92	7	5	9	3	-	-	82
MSN Nursing	25	23	2	1	1	1	-	2	20
MSN Nursing Administration	53	50	3	7	1	-	-	4	41
MSNBA Nursing/Business Administration	3	3	-	-	1	-	-	-	2
PhD Nursing	47	45	2	5	1	1	-	6	34
CERT Nursing Education	2	2	-	-	-	-	-	-	2
<b>CNHS Total</b>	<b>850</b>	<b>784</b>	<b>66</b>	<b>105</b>	<b>78</b>	<b>34</b>	<b>2</b>	<b>28</b>	<b>603</b>
<b>The Institute of Public Policy</b>									
MA International Transactions	240	136	104	21	22	23	2	45	127
PhD Public Policy	112	32	80	7	9	1	1	16	78
CERT International Planning	25	6	19	2	-	-	-	1	22
<b>TIPP Total</b>	<b>377</b>	<b>174</b>	<b>203</b>	<b>30</b>	<b>31</b>	<b>24</b>	<b>3</b>	<b>62</b>	<b>227</b>

\* Degree program is being phased out and no longer accepts new students.

continued next page

**STUDENT ENROLLMENT BY DIVISION, DEPARTMENT AND DEGREE  
FALL 1998**

	Total	Gender		Ethnicity					
		Female	Male	Afric	Asian	Hisp	Native	N-Res	White
				Amer	Amer	Amer	Amer	Alien	Amer
<b>Undeclared Majors</b>									
BPRE Undergraduate Undeclared	1,453	797	656	124	246	109	3	28	943
<b>UM Total</b>	<b>1,453</b>	<b>797</b>	<b>656</b>	<b>124</b>	<b>246</b>	<b>109</b>	<b>3</b>	<b>28</b>	<b>943</b>
<b>Extended Studies and Guest Matriculants</b>									
Extended Studies									
NONDG Contract Course Registration	52	17	35	4	2	1	-	-	45
NONDG English Language Institute	37	18	19	-	4	-	-	29	4
NONDG Extended Studies (Arts & Sciences)	529	304	225	40	41	24	-	4	420
NONDG Extended Studies (Business)	51	23	28	4	5	1	-	-	41
NONDG Extended Studies (Education)	1,205	975	230	163	30	42	5	2	963
NONDG Extended Studies (Inst. of the Arts)	9	6	3	1	1	-	-	-	7
NONDG Extended Studies (New Century)	1	1	-	-	1	-	-	-	-
NONDG Extended Studies (Nursing)	125	119	6	9	6	2	-	-	108
NONDG Extended Studies (Public Policy)	8	3	5	2	-	-	-	-	6
NONDG Extended Studies (ITE)	50	10	40	4	12	4	-	1	29
NONDG Extended Studies (Undecided)	371	194	177	27	33	10	3	9	289
NONDG Extended Studies (Post-Bacc)	98	63	35	6	7	3	-	1	81
NONDG Extended Studies Undergraduate	28	13	15	3	10	-	-	-	15
NONDG International Stud. Exchange Grad	5	2	3	-	-	-	-	5	-
NONDG Int'l Stud. Exchange Undergrad	8	5	3	-	-	-	-	8	-
<i>Subtotal</i>	2,577	1,753	824	263	152	87	8	59	2,008
Guest Matriculants	61	27	34	8	10	4	-	1	38
<b>ES/GM Total</b>	<b>2,638</b>	<b>1,780</b>	<b>858</b>	<b>271</b>	<b>162</b>	<b>91</b>	<b>8</b>	<b>60</b>	<b>2,046</b>
<b>University Total Enrollment</b>	<b>24,010</b>	<b>13,414</b>	<b>10,596</b>	<b>1,957</b>	<b>2,939</b>	<b>1,290</b>	<b>93</b>	<b>1,167</b>	<b>16,564</b>

\* Degree program is being phased out and no longer accepts new students.

ENROLLED INTERNATIONAL STUDENTS BY COUNTRY OF ORIGIN  
FALL 1998

Country	Enrolled	Country	Enrolled	Country	Enrolled
Afghanistan	5	Ghana	4	Peru	17
Albania	3	Greece	5	Philippines	26
Angola	1	Grenada	1	Poland	1
Argentina	14	Guatemala	1	Portugal	1
Australia	5	Guyana	1	Qatar	1
Austria	1	Haiti	1	Republic of Korea	60
Bahamas	3	Hong Kong	7	Romania	5
Bahrain	5	Hungary	2	Russia	15
Bangladesh	11	Iceland	1	Saudi Arabia	45
Belgium	2	India	159	Sierra Leone	4
Bhutan	1	Indonesia	8	Singapore	3
Bolivia	8	Iran	9	Somalia	1
Bosnia-Herzegovina	2	Ireland	1	South Africa	2
Brazil	15	Israel	7	Spain	2
Bulgaria	5	Italy	12	Sri Lanka	1
Burma	1	Jamaica	17	Sudan	1
Byelarus	4	Japan	46	Sweden	16
Cameroon	4	Jordan	19	Switzerland	5
Canada	19	Kenya	7	Syria	5
Caroline Island	1	Kuwait	9	Taiwan	30
Cayman Islands	1	Lebanon	6	Tanzania	3
Chile	5	Liberia	2	Thailand	38
China	109	Madagascar	1	Trinidad and Tobago	4
Colombia	11	Malaysia	5	Tunisia	1
Costa Rica	2	Malta	4	Turkey	44
Croatia	1	Mauritania	1	Uganda	1
Cyprus	4	Mauritius	1	Ukraine	1
Czechoslovakia	2	Mexico	6	United Arab Emirates	10
Denmark	1	Moldova	1	United Kingdom	18
Ecuador	1	Morocco	9	Unknown	44
Egypt	12	Mozambique	1	Uzbekistan	1
El Salvador	4	Nepal	3	Venezuela	9
Estonia	1	Netherlands	4	Vietnam	16
Ethiopia	14	New Zealand	1	Yemen	5
Finland	3	Nicaragua	1	Yugoslavia	3
France	11	Nigeria	11	Zimbabwe	2
Gambia	1	Norway	4		
Gaza Strip	1	Oman	3	<b>Total Students</b>	<b>1,167</b>
Germany	9	Pakistan	41	<b>Total Countries</b>	<b>114</b>

STUDENTS IN HOUSING  
FALL 1998

		Northern Virginia	Other Virginia	Out-of- State	Total	% of Total
Freshman	First Time	411	366	197	974	38.1
	New	31	20	15	66	2.6
	Returning	134	93	55	282	11
	<b>Total</b>	<b>576</b>	<b>479</b>	<b>267</b>	<b>1,322</b>	<b>51.7</b>
Sophomore	New	33	21	11	65	2.5
	Returning	217	204	107	528	20.6
	<b>Total</b>	<b>250</b>	<b>225</b>	<b>118</b>	<b>593</b>	<b>23.2</b>
Junior	New	17	10	3	30	1.2
	Returning	151	127	64	342	13.4
	<b>Total</b>	<b>168</b>	<b>137</b>	<b>67</b>	<b>372</b>	<b>14.5</b>
Senior	New	1	.	2	3	0.1
	Returning	87	81	44	212	8.3
	<b>Total</b>	<b>88</b>	<b>81</b>	<b>46</b>	<b>215</b>	<b>8.4</b>
Other	New	4	2	34	40	1.6
	Returning	2	4	9	15	0.6
	<b>Total</b>	<b>6</b>	<b>6</b>	<b>43</b>	<b>55</b>	<b>2.2</b>
<b>Total New</b>		<b>497</b>	<b>419</b>	<b>262</b>	<b>1,178</b>	<b>46.1%</b>
<i>% of Total</i>		42.2	35.6	22.2	100	
<b>Total Return</b>		<b>591</b>	<b>509</b>	<b>279</b>	<b>1,379</b>	<b>53.9%</b>
<i>% of Total</i>		42.9	36.9	20.2	100	
<b>Grand Total in Housing</b>		<b>1,088</b>	<b>928</b>	<b>541</b>	<b>2,557</b>	<b>100%</b>
<i>% of Total</i>		42.5	36.3	21.2	100	



---

**DEGREES AND CERTIFICATES OFFERED AY98-99**  
**CLASSIFICATION OF INSTRUCTIONAL PROGRAM (CIP) CODE - YEAR INITIATED**

---

**CERTIFICATE PROGRAMS:****Undergraduate Certificate Programs**

Applied Statistics  
 Environmental Chemistry  
 Environmental Management  
 Gerontology  
 Operations Research and Engineering

**Graduate Certificate Programs**

Command, Control, Communications and Intelligence  
 Communications and Networking  
 Community College Education  
 Computational Modeling  
 Computational Techniques and Applications  
 Federal Statistics  
 Gerontology  
 Global Trade Management  
 Information Engineering  
 Information Systems Security  
 Integration of Technology in Schools  
 International Business Planning  
 International Nursing  
 Managing Organizations in the International Arena  
 Military Operations Research  
 Multimedia Development  
 Nonprofit Management  
 Nursing Administration  
 Nursing Education  
 Regional Trade, Policy, and Planning  
 Signal Processing  
 Software Systems Engineering  
 Systems Engineering for Computer, Information, and Software Intensive Systems  
 Teaching of English as a Second Language  
 VLSI Design/Manufacturing

**BACHELOR DEGREES:****Institute of the Arts**

	CIP Code	Year Initiated
Art (Studio), B.A.	50.0701	1974
Art (Studio), B.F.A.	50.0701	1997
Dance, B.A.	50.0301	1986
Dance, B.F.A.	50.0301	1988
Theater, B.A.	50.0501	1975

**College of Arts and Sciences**

Administration of Justice, B.S.	43.0107	1971
Anthropology, B.A.	45.0201	1981
Biology, B.A.	26.0101	1966
Biology, B.S.	26.0101	1966
Chemistry, B.A.	40.0501	1967
Chemistry, B.S.	40.0501	1967
Communication, B.A.	23.1001	1980
Earth Systems Science, B.S.	40.0601	1992

**DEGREES AND CERTIFICATES OFFERED AY98-99**  
**CLASSIFICATION OF INSTRUCTIONAL PROGRAM (CIP) CODE**

<b>BACHELOR DEGREES (CONT.):</b>	<b>CIP Code</b>	<b>Year Initiated</b>
Economics, B.A.	45.0601	1969
Economics, B.S.	45.0601	1969
English, B.A.	23.0101	1966
Geography, B.A.	45.0701	1975
Geography, B.S.	45.0701	1998
Geology, B.A.	40.0601	1989
Government and International Politics, B.A.	45.1001	1971
History (Art), B.A.	50.0701	1974
History, B.A.	45.0801	1966
Mathematics, B.A.	27.0101	1967
Mathematics, B.S.	27.0101	1967
Medical Technology, B.S.	51.1005	1975
Modern & Classical Languages, B.A.	16.0101	1990
Music, B.A.	50.0903	1972
Music, B.M.	50.0903	1972
Philosophy, B.A.	38.0101	1971
Physics, B.S.	40.0808	1968
Psychology, B.A.	42.0101	1969
Psychology, B.S.	42.0101	1969
Public Administration, B.S.	44.0401	1973
Russian Studies, B.A.	05.0199	1979
Sociology, B.A.	45.1101	1970
<b>Graduate School of Education</b>		
Health, Fitness and Recreation Resources, B.S.	13.1307	1994
Physical Education, B.S.Ed.	13.1314	1972
<b>School of Information Technology and Engineering</b>		
Computer Engineering, B.S.	11.0101	1998
Computer Science, B.S.	11.0101	1980
Electrical Engineering, B.S.	14.1001	1981
Systems Engineering, B.S.	14.2701	1987
Urban Systems Engineering, B.S.	14.2798	1991
<b>School of Management</b>		
Accounting, B.S.	52.0301	1980
Decision Science and MIS, B.S.	52.9999	1980
Finance, B.S.	52.0801	1980
Management, B.S.	52.0201	1980
Marketing, B.S.	52.1401	1980
<b>New Century College</b>		
Individualized Studies, B.I.S.	24.0101	1975
Integrative Studies, B.A.IN.	24.0199	1995
Integrative Studies, B.S.IN.	24.0199	1995
Interdisciplinary Studies, B.A.I.S.	24.0199	1994
Social Work, B.S.	44.0701	1971
<b>College of Nursing and Health Science</b>		
Health Science, B.S.	51.9999	1998
Nursing, B.S.N.	51.1601	1974



**DEGREES AND CERTIFICATES OFFERED AY98-99**  
**CLASSIFICATION OF INSTRUCTIONAL PROGRAM (CIP) CODE**

<b>MASTER'S DEGREES</b>	CIP Code	Year Initiated
<b>Institute of the Arts</b>		
Dance, M.F.A.	50.0101	1992
Visual Information Technology, M.A.	50.0101	1990
Visual Information Technology, M.F.A.	50.0101	1990
<b>College of Arts and Sciences</b>		
Applied and Engineering Physics, M.S.	40.0801	1982
Biology, M.S.	26.0101	1970
Chemistry, M.S.	40.0501	1988
Creative Writing, M.F.A.	23.0501	1980
Economics, M.A.	45.0601	1973
English, M.A.	23.0801	1973
English: Linguistics, M.A.	23.0601	1973
Geographic and Cartographic Sciences, M.S.	45.0701	1979
History, M.A.	45.0801	1971
Interdisciplinary Studies, M.A.I.S.	30.9999	1982
Mathematics, M.S.	27.0101	1970
Modern & Classical Languages, M.A.	16.0101	1981
Music, M.A.	50.0101	1982
New Professional Studies: Organizational Learning, M.S.	30.9998	1997
Physics, M.A.	40.0801	1982
Psychology, M.A.	42.0101	1972
Public Administration, M.P.A.	44.0401	1976
Sociology, M.A.	45.1101	1982
Telecommunications, M.A.	09.9999	1990
<b>Institute for Biosciences, Bioinformatics and Biotechnology</b>		
New Professional Studies: Bioinformatics, M.S.	30.9998	1999
New Professional Studies: Biotechnology, M.S.	30.9998	1999
New Professional Studies: Forensic Biosciences, M.S.	30.9998	1998
<b>Institute for Conflict Analysis and Resolution</b>		
Conflict Analysis & Resolution, M.S.	30.0501	1982
<b>Graduate School of Education</b>		
Counseling and Development, M.Ed.	13.1101	1972
Curriculum and Instruction, M.Ed.	13.0301	1989
Education Leadership, M.Ed.	13.0401	1972
Exercise, Fitness and Health Promotion, M.S.	13.1314	1982
Instructional Technology, M.Ed.	13.0301	1989
New Professional Studies: Teaching, M.A.	30.9998	1996
Special Education, M.Ed.	13.1001	1975
<b>School of Information Technology and Engineering</b>		
Computer Science, M.S.	11.0101	1982
Electrical Engineering, M.S.	14.1001	1982
Information Systems, M.S.	11.0401	1982
Operations Research and Management Science, M.S.	14.1701	1982
Software Systems Engineering, M.S.	14.2799	1989
Statistical Science, M.S.	14.1301	1989
Systems Engineering, M.S.	14.2701	1984
Urban Systems Engineering, M.S.	14.2798	1994

**DEGREES AND CERTIFICATES OFFERED AY98-99**  
**CLASSIFICATION OF INSTRUCTIONAL PROGRAM (CIP) CODE**

<b><u>MASTER'S DEGREES (CONT.):</u></b>	<b><u>CIP Code</u></b>	<b><u>Year Initiated</u></b>
<b>School of Management</b>		
Business Administration, M.B.A.	52.0201	1972
New Professional Studies: Technology Management, M.S.	30.9998	1997
<b>College of Nursing and Health Science</b>		
New Professional Studies: Health Systems Management, M.S.	30.9998	1999
Nursing, M.S.N., M.S.N/M.B.A.	51.1601	1979
<b>The Institute of Public Policy</b>		
International Commerce and Policy, M.A.	45.0901	1990

<b><u>DOCTORAL DEGREES:</u></b>	<b><u>CIP Code</u></b>	<b><u>Year Initiated</u></b>
<b>College of Arts and Sciences</b>		
Cultural Studies, Ph.D.	24.0103	1994
Economics, Ph.D.	45.0601	1982
Environmental Science and Public Policy, Ph.D.	26.9999	1982
Psychology, Ph.D.	42.0101	1990
<b>Institute for Computational Sciences and Informatics</b>		
Computational Sciences and Informatics, Ph.D.	30.0801	1992
<b>Institute for Conflict Analysis and Resolution</b>		
Conflict Analysis and Resolution, Ph.D.	30.0501	1988
<b>Graduate School of Education</b>		
Community College Education, D.A.	13.1299	1990
Education, Ph.D.	13.0101	1980
<b>School of Information Technology and Engineering</b>		
Information Technology, Ph.D.	14.9999	1985
<b>College of Nursing and Health Science</b>		
Nursing, Ph.D.	51.1602	1993
<b>The Institute of Public Policy</b>		
Public Policy, Ph.D.	44.0501	1991

<b><u>FIRST PROFESSIONAL DEGREES:</u></b>	<b><u>CIP Code</u></b>	<b><u>Year Initiated</u></b>
<b>School of Law</b>		
Law, J.D.	22.0101	1979

**TOTAL UNIVERSITY DEGREE PROGRAMS OFFERED**

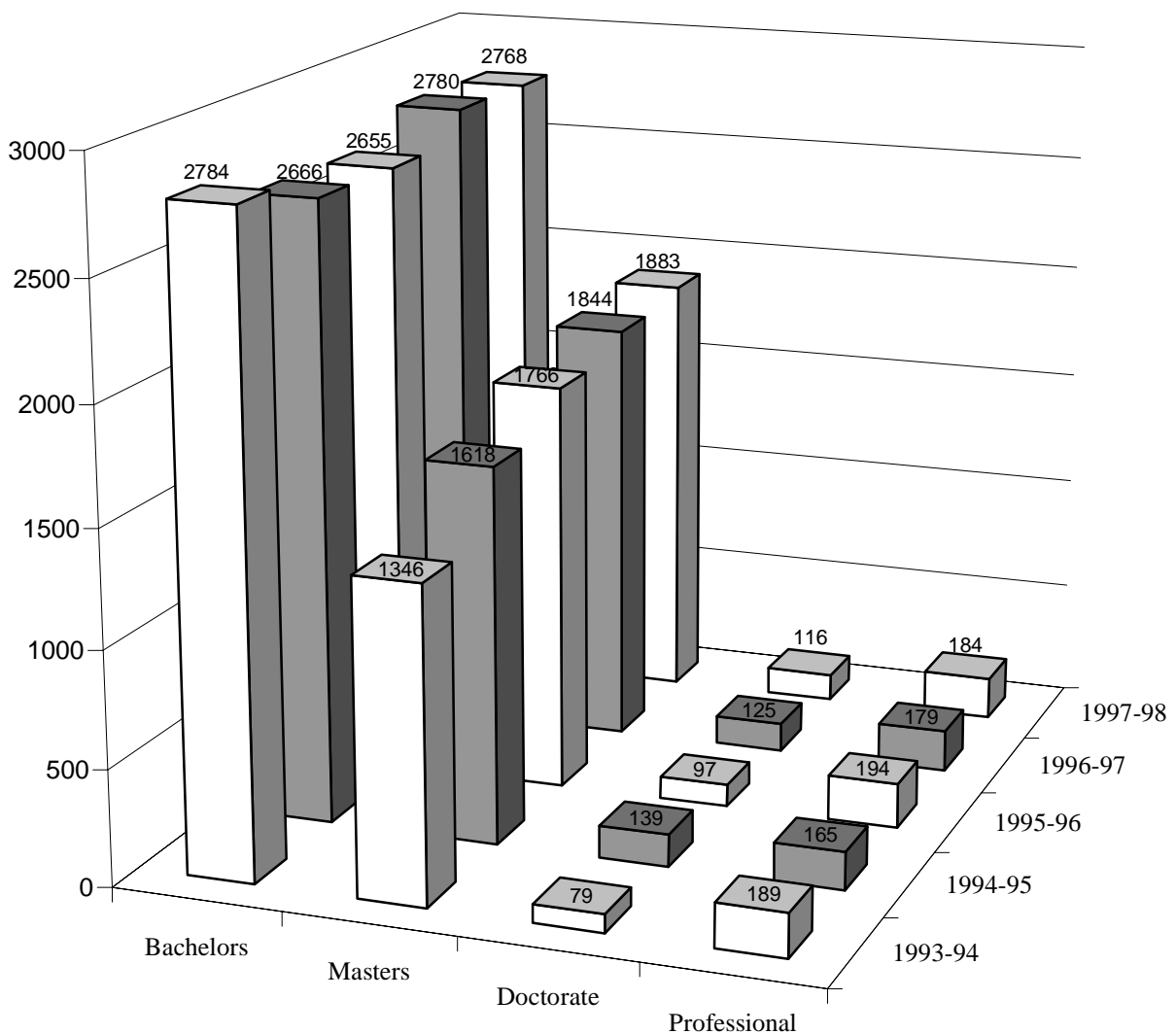
Bachelors	54
Master's	47
Doctoral	11
First Professional	1
<b>TOTAL</b>	<b>113</b>

*Note: This total reflects only current degree programs accepting new students.*

DEGREES AND CERTIFICATES AWARDED

Degrees and Certificates Conferred by Academic Division  
Academic Year 1997-98

	Certificates	Bachelors	Masters	Doctorate	First Professional	Total
Institute of the Arts	-	67	5	-	-	72
College of Arts and Sciences	31	1,470	404	36	-	1,941
Inst for Computational Sciences & Informatics	-	-	-	8	-	8
Institute for Conflict Analysis & Resolution	-	-	14	2	-	16
Graduate School of Education	3	87	659	25	-	774
School of Info Technology & Engineering	95	204	369	29	-	697
School of Law	-	-	-	-	184	184
School of Management	-	620	245	-	-	865
New Century College	-	131	-	-	-	131
College of Nursing & Health Science	3	189	68	10	-	270
The Institute of Public Policy	-	-	119	6	-	125
<b>University Total</b>	<b>132</b>	<b>2,768</b>	<b>1,883</b>	<b>116</b>	<b>184</b>	<b>5,083</b>



**DEGREES AND CERTIFICATES AWARDED BY GENDER AND ETHNICITY  
ACADEMIC YEAR 1997-98**

	Total	Gender		Ethnicity						
		Female	Male	Afric	Asian	Hisp	Native	N-Res	White	
				Amer	Amer	Amer	Amer	Alien	Amer	
<b>Institute of the Arts</b>										
Division of Studio Art	BA Art (Studio)	49	14	35	-	10	6	-	3	30
	BFA Art Studio	1	-	1	-	-	-	-	-	1
	<i>Subtotal</i>	50	14	36	-	10	6	-	3	31
Division of Dance	BFA Dance	6	1	5	-	-	-	-	-	6
	MFA Dance	2	-	2	-	-	-	-	-	2
	<i>Subtotal</i>	8	1	7	-	-	-	-	-	8
Visual Info. Tech.	MA Visual Information Technology	3	1	2	-	1	-	-	1	1
Division of Theater	BA Theater	11	3	8	1	1	1	-	-	8
	<b>IART Total</b>	<b>72</b>	<b>19</b>	<b>53</b>	<b>1</b>	<b>12</b>	<b>7</b>	<b>-</b>	<b>4</b>	<b>48</b>
<b>College of Arts and Sciences</b>										
Biology	BA Biology	26	10	16	3	2	1	-	4	16
	BS Biology	120	56	64	3	37	2	-	7	71
	BS Medical Technology	6	4	2	-	3	-	-	1	2
	MS Biology	15	5	10	-	-	-	-	1	14
	PhD Environmental Science & Public Policy	6	2	4	-	1	-	-	1	4
	CERT Environmental Management	11	5	6	-	-	-	-	-	11
	<i>Subtotal</i>	184	82	102	6	43	3	-	14	118
Chemistry	BA Chemistry	6	-	6	-	2	1	-	-	3
	BS Chemistry	8	4	4	3	1	-	-	-	4
	MS Chemistry	9	9	-	-	2	-	-	1	6
	<i>Subtotal</i>	23	13	10	3	5	1	-	1	13
Communication	BA Speech Communication	195	77	118	21	13	19	-	4	138
Economics	BA Economics	22	16	6	-	4	3	-	1	14
	BS Economics	34	25	9	1	5	2	-	3	23
	MA Economics	26	21	5	-	1	1	-	5	19
	PhD Economics	10	9	1	-	-	1	-	1	8
	<i>Subtotal</i>	92	71	21	1	10	7	-	10	64
English	BA English	184	56	128	12	13	13	-	1	145
	MA English	1	1	-	-	-	-	-	-	1
	MA English (Linguistics)	11	-	11	-	2	-	-	-	9
	MA English (Literature)	16	6	10	1	-	-	-	1	14
	MA English (Professional Writing & Editing)	11	-	11	-	1	-	-	-	10
	MA English (Teaching Writing & Literature)	8	1	7	-	-	1	-	-	7
	MFA Creative Writing	21	11	10	1	-	1	-	-	19
	CERT Teaching English as a Second Lang.	11	-	11	-	2	-	-	2	7
	<i>Subtotal</i>	263	75	188	14	18	15	-	4	212

continued next page

**DEGREES AND CERTIFICATES AWARDED BY GENDER AND ETHNICITY  
ACADEMIC YEAR 1997-98**

		Total	Gender		Ethnicity					
			Female	Male	Afric Amer	Asian Amer	Hispanic Amer	Native Amer	N-Res Alien	White Amer
Modern and	BA Classical Studies	1	-	1	-	-	-	-	-	1
Classical	BA Modern & Classical Languages (French)	6	1	5	-	-	-	-	-	6
Languages	BA Modern & Classical Languages (German)	1	-	1	-	-	-	-	-	1
	BA Modern & Classical Languages (Spanish)	22	4	18	-	2	9	-	1	10
	MA Modern & Classical Languages	8	2	6	-	1	1	-	2	4
	CERT Translation	3	-	3	-	-	2	-	-	1
	<i>Subtotal</i>	41	7	34	-	3	12	-	3	23
Geography and	BA Geography	10	8	2	1	-	1	-	-	8
Earth Sciences	BA Geology	2	1	1	-	-	-	-	-	2
	BS Earth Systems Science	14	6	8	-	1	1	-	-	12
	MS Geographic & Cartographic Science	22	14	8	-	-	-	-	1	21
	<i>Subtotal</i>	48	29	19	1	1	2	-	1	43
History and	BA Art (History)	6	1	5	1	2	-	-	-	3
Art History	BA History	85	56	29	3	-	2	-	1	79
	MA History	33	18	15	-	-	-	-	-	33
	<i>Subtotal</i>	124	75	49	4	2	2	-	1	115
Interdisciplinary	MAIS Interdisciplinary									
Studies, Graduate	Studies, (Individualized)	32	8	24	3	-	1	-	-	28
	MAIS Interdisciplinary Studies (Liberal)	3	1	2	-	-	-	-	-	3
	<i>Subtotal</i>	35	9	26	3	-	1	-	-	31
Mathematical	BA Mathematics	7	1	6	-	-	-	-	-	7
Sciences	BS Mathematics	9	4	5	1	2	1	-	1	4
	MS Mathematics	3	2	1	-	-	-	-	1	2
	<i>Subtotal</i>	19	7	12	1	2	1	-	2	13
Music	BA Music	5	2	3	-	1	-	-	-	4
	BM Music	13	7	6	1	1	-	-	1	10
	MA Music	19	8	11	-	-	1	-	1	17
	<i>Subtotal</i>	37	17	20	1	2	1	-	2	31
Phil. And Rel. Studies	BA Philosophy	17	10	7	1	1	-	-	-	15
Physics	BA Physics	1	1	-	-	1	-	-	-	-
	BS Physics	2	1	1	-	-	-	-	-	2
	MS Applied and Eng. Physics	4	3	1	-	1	-	-	-	3
	<i>Subtotal</i>	7	5	2	-	2	-	-	-	5
Program for Social & Organizational Lrng.	MS Professional Studies:Organizational Lrng.	10	3	7	1	1	-	-	-	8

continued next page

**DEGREES AND CERTIFICATES AWARDED BY GENDER AND ETHNICITY  
ACADEMIC YEAR 1997-98**

		Total	Gender		Ethnicity					
			Female	Male	Afric	Asian	Hisp	Native	N-Res	White
					Amer	Amer	Amer	Amer	Alien	Amer
Psychology	BA Psychology	175	33	142	11	13	15	-	5	131
	BS Psychology	117	24	93	2	8	2	1	2	102
	MA Psychology	8	1	7	-	1	-	-	-	7
	MA Psychology (Exper Neuropsychology)	5	2	3	-	-	-	-	-	5
	MA Psychology (Human Factors Eng.)	8	2	6	-	-	-	-	-	8
	MA Psychology (Indust/Organizational)	15	6	9	-	-	-	-	1	14
	MA Psychology (Life-Span Developmental)	3	1	2	-	-	-	-	-	3
	MA Psychology (School)	6	1	5	1	-	-	-	1	4
	PhD Psychology	5	1	4	-	-	-	-	-	5
	PhD Psychology (Applied Experimental)	1	1	-	-	-	-	-	-	1
	PhD Psychology (Clinical)	4	1	3	-	-	-	-	-	4
	PhD Psychology (Developmental)	2	-	2	-	-	-	-	-	2
	PhD Psychology (Human Factors Eng.)	3	2	1	-	-	-	-	-	3
	PhD Psychology (Indust/Organizational)	5	-	5	-	-	-	-	-	5
	CERT Psychology Technician	5	1	4	-	1	1	-	-	3
	<i>Subtotal</i>	362	76	286	14	23	18	1	9	297
Public and	BA Government and Politics	91	53	38	5	6	6	-	2	72
International	BA International Studies	80	35	45	-	12	14	-	6	48
Affairs	BS Administration of Justice	86	53	33	3	6	9	-	1	67
	BS Public Administration	34	13	21	4	1	-	-	-	29
	MPA Public Administration	68	32	36	4	-	4	-	2	58
	CERT Nonprofit Management	1	-	1	-	-	-	-	-	1
	<i>Subtotal</i>	360	186	174	16	25	33	-	11	275
Russian Studies	BA Russian Studies	6	-	6	-	-	-	-	1	5
Sociology and	BA Anthropology	23	6	17	2	3	-	-	-	18
Anthropology	BA Sociology	49	9	40	9	7	5	-	1	27
	MA Sociology	13	2	11	1	1	-	-	1	10
	<i>Subtotal</i>	85	17	68	12	11	5	-	2	55
Study of the Americas	BA Study of the Americas	7	2	5	-	-	3	-	-	4
Telecommunications	MA Telecommunications	26	12	14	1	1	-	-	-	24
	<b>CAS Total</b>	<b>1,941</b>	<b>773</b>	<b>1,168</b>	<b>100</b>	<b>163</b>	<b>123</b>	<b>1</b>	<b>65</b>	<b>1,489</b>
<b>Institute for Computational Sciences &amp; Informatics</b>										
	PhD Computational Science & Informatics	8	7	1	-	1	-	-	4	3
	<b>ICSI Total</b>	<b>8</b>	<b>7</b>	<b>1</b>	<b>-</b>	<b>1</b>	<b>-</b>	<b>-</b>	<b>4</b>	<b>3</b>

continued next page

**DEGREES AND CERTIFICATES AWARDED BY GENDER AND ETHNICITY  
ACADEMIC YEAR 1997-98**

		Total	Gender		Ethnicity					
			Female	Male	Afric	Asian	Hisp	Native	N-Res	White
					Amer	Amer	Amer	Amer	Alien	Amer
<b>Institute for Conflict Analysis &amp; Resolution</b>										
	MS Conflict Analysis & Resolution	14	5	9	1	1	1	-	1	10
	PhD Conflict Analysis & Resolution	2	2	-	-	-	-	-	1	1
	<b>ICAR Total</b>	<b>16</b>	<b>7</b>	<b>9</b>	<b>1</b>	<b>1</b>	<b>1</b>	<b>-</b>	<b>2</b>	<b>11</b>
<b>Graduate School of Education</b>										
Center for	DA Community College Education	12	10	2	1	-	-	-	-	11
Community College	CERT Community College Education	2	2	-	-	1	-	-	-	1
	<i>Subtotal</i>	14	12	2	1	1	-	-	-	12
Education	MED C&I (Early Childhood)	85	6	79	2	5	4	-	-	74
	MED C&I (Biling/Multicult Ed)	5	1	4	-	2	2	-	-	1
	MED C&I (Teaching Eng. as a Second Lang)	17	1	16	-	3	1	-	2	11
	MED C&I (Middle Education)	73	13	60	6	3	2	-	-	62
	MED C&I (Reading)	15	-	15	-	-	-	-	-	15
	MED C&I (Secondary Education)	69	21	48	4	3	3	-	-	59
	MED Counseling and Development	70	7	63	4	1	6	-	-	59
	MED Education Leadership	104	33	71	25	1	2	-	-	76
	MED Instructional Technology	16	5	11	1	-	-	-	-	15
	MED Special Education	91	10	81	3	4	3	1	-	80
	PhD Education	13	1	12	3	1	-	-	-	9
	<i>Subtotal</i>	558	98	460	48	23	23	1	2	461
Health and Human	BS Health, Fitness & Recreational Resources	54	28	26	6	4	-	-	-	44
Services	BSED Physical Education	33	15	18	1	-	2	-	-	30
	MS Exercise Science and Health	11	4	7	2	-	1	-	-	8
	CERT Gerontology	1	-	1	-	-	-	-	-	1
	<i>Subtotal</i>	99	47	52	9	4	3	-	-	83
Initiatives in Educ.										
Transformation	MED C&I (Reflective Practice w/ Subj Spec)									
	Professional Studies: Teaching Track	103	11	92	7	-	2	-	-	94
	<b>GSE Total</b>	<b>774</b>	<b>168</b>	<b>606</b>	<b>65</b>	<b>28</b>	<b>28</b>	<b>1</b>	<b>2</b>	<b>650</b>
<b>School of Information Technology and Engineering</b>										
Applied and	MS Statistical Science	8	4	4	-	-	-	-	2	6
Engineering Statistics	CERT Applied Statistics	1	1	-	-	-	-	-	1	-
	<i>Subtotal</i>	9	5	4	-	-	-	-	3	6
Civil, Environ. &	BS Urban Systems Engineering	17	14	3	1	2	1	-	1	12
Infrastructure Engr.	MS Urban Systems Engineering	9	7	2	1	1	1	-	1	5
	<i>Subtotal</i>	26	21	5	2	3	2	-	2	17
Computer Science	BS Computer Science	115	88	27	1	52	1	-	10	51
	MS Computer Science	102	67	35	-	19	-	-	53	30
	<i>Subtotal</i>	217	155	62	1	71	1	-	63	81

continued next page

**DEGREES AND CERTIFICATES AWARDED BY GENDER AND ETHNICITY  
ACADEMIC YEAR 1997-98**

		Total	Gender		Ethnicity					
			Female	Male	Afric Amer	Asian Amer	Hisp Amer	Native Amer	N-Res Alien	White Amer
Electrical and	BS Electrical Engineering	59	50	9	4	19	2	-	-	34
Computer	MS Electrical Engineering	45	39	6	1	7	-	-	5	32
Engineering	CERT Communications & Networking	9	8	1	-	1	-	-	3	5
	<i>Subtotal</i>	113	97	16	5	27	2	-	8	71
Information and	MS Information Systems	114	69	45	1	24	4	-	31	54
Software Systems	MS Software Systems Engineering	45	33	12	-	8	1	-	5	31
Engineering	CERT Information Engineering	22	17	5	1	4	1	-	4	12
	CERT Information Systems Engineering	2	2	-	-	-	-	-	1	1
	CERT Software Systems Engineering	33	25	8	-	5	-	1	1	26
	<i>Subtotal</i>	216	146	70	2	41	6	1	42	124
Operations Research	MS Operations Research & Mgmt Science	19	13	6	-	-	-	-	2	17
& Engineering	CERT Operations Research & Engineering	1	1	-	-	-	-	-	-	1
	<i>Subtotal</i>	20	14	6	-	-	-	-	2	18
Office of the Dean	PHD Information Technology	29	22	7	-	5	-	-	11	13
Systems	BS Systems Engineering	13	10	3	1	2	1	-	2	7
Engineering	CERT Cmnd, Cntrl, Comm & Intell Sys Eng	3	3	-	1	-	-	-	-	2
	MS Systems Engineering	27	19	8	1	4	2	-	1	19
	CERT Sys Eng for Comp Info & Soft Int Sys	24	21	3	6	1	-	-	-	17
	<i>Subtotal</i>	67	53	14	9	7	3	-	3	45
	<b>ITE Total</b>	<b>697</b>	<b>513</b>	<b>184</b>	<b>19</b>	<b>154</b>	<b>14</b>	<b>1</b>	<b>134</b>	<b>375</b>
<b>School of Law</b>										
	JD Law	150	88	62	9	4	-	-	-	137
	JD Law (Corporate & Securities)	8	7	1	1	-	-	-	-	7
	JD Law (Intellectual Property)	17	16	1	-	-	-	-	-	17
	JD Law (International Business)	6	5	1	-	1	-	-	-	5
	JD Law (Regulatory)	3	2	1	-	-	-	-	-	3
	<b>Law Total</b>	<b>184</b>	<b>118</b>	<b>66</b>	<b>10</b>	<b>5</b>	<b>-</b>	<b>-</b>	<b>-</b>	<b>169</b>
<b>School of Management</b>										
	BS Accounting	156	55	101	10	37	11	-	7	91
	BS Business Administration	24	12	12	1	-	1	-	-	22
	BS Decision Science & MIS System	213	107	106	6	109	7	1	12	78
	BS Finance	95	67	28	3	17	5	-	6	64
	BS Management	58	29	29	4	7	4	-	1	42
	BS Marketing	74	28	46	2	10	5	-	6	51
	MBA Business Administration	190	115	75	14	10	4	-	19	143
	MBA Executive Business Admin.	23	13	10	1	-	-	-	-	22
	MS Accounting	14	5	9	1	1	-	-	4	8
	MS Taxation	18	8	10	-	2	1	-	-	15
	<b>SOM Total</b>	<b>865</b>	<b>439</b>	<b>426</b>	<b>42</b>	<b>193</b>	<b>38</b>	<b>1</b>	<b>55</b>	<b>536</b>

continued next page



**DEGREES AND CERTIFICATES AWARDED BY GENDER AND ETHNICITY  
ACADEMIC YEAR 1997-98**

	Total	Gender		Ethnicity					
		Female	Male	Afric	Asian	Hisp	Native	N-Res	White
				Amer	Amer	Amer	Amer	Alien	Amer
<b>New Century College</b>									
BAIN Integrative Studies	10	1	9	-	1	-	-	-	9
BAIS Interdisciplinary Studies	2	1	1	-	-	-	-	-	2
BIS Individualized Studies	76	27	49	8	3	2	1	2	60
BS Social Work	41	2	39	2	1	3	-	-	35
BSIN Integrative Studies	2	1	1	-	-	-	-	-	2
<b>NCC Total</b>	<b>131</b>	<b>32</b>	<b>99</b>	<b>10</b>	<b>5</b>	<b>5</b>	<b>1</b>	<b>2</b>	<b>108</b>
<b>College of Nursing and Health Science</b>									
BSN Nursing	189	15	174	18	23	5	-	3	140
MSN Advanced Clinical Nursing	19	-	19	-	1	-	-	-	18
MSN Nurse Practitioner	32	3	29	-	4	1	-	-	27
MSN Nursing	2	-	2	-	-	-	-	-	2
MSN Nursing Administration	14	2	12	2	-	1	-	2	9
MSNBA Nursing/ Business Administration	1	-	1	-	-	-	-	-	1
CERT Nursing Education	3	1	2	-	-	-	-	1	2
PhD Nursing	10	-	10	-	-	-	-	1	9
<b>CNHS Total</b>	<b>270</b>	<b>21</b>	<b>249</b>	<b>20</b>	<b>28</b>	<b>7</b>	<b>-</b>	<b>7</b>	<b>208</b>
<b>The Institute of Public Policy</b>									
MA International Transactions	119	45	74	6	14	12	-	22	65
PhD Public Policy	6	6	-	-	-	1	-	1	4
<b>TIPP Total</b>	<b>125</b>	<b>51</b>	<b>74</b>	<b>6</b>	<b>14</b>	<b>13</b>	<b>-</b>	<b>23</b>	<b>69</b>
<b>University Total</b>	<b>5,083</b>	<b>2,148</b>	<b>2,935</b>	<b>274</b>	<b>604</b>	<b>236</b>	<b>5</b>	<b>298</b>	<b>3,666</b>

## INSTITUTIONAL ASSESSMENT GRADUATING SENIORS SURVEY RESULTS

Each year, the Office of Institutional Assessment, in cooperation with academic departments and the Registrar's Office, surveys Mason's graduating seniors. This table below provides a review of seniors' levels of satisfaction with experiences at Mason over the past five years. Satisfaction declined among seniors in 1996 and in particular 1997, but rose in 1998. Higher satisfaction in 1998 is a return to levels expressed by seniors in 1994 and 1995.

	1994	1994	1995	1995	1996	1996	1997	1997	1998	1998
	Very	Somewhat	Very	Somewhat	Very	Somewhat	Very	Somewhat	Very	Somewhat
<b>Satisfaction at Mason</b>	%	%	%	%	%	%	%	%	%	%
Education in general	43	52	45	52	32	60	31	60	46	49
Education in major field	40	34	60	35	43	48	42	47	57	37
Advising in major field*	29	42	37	40	24	41	24	39	29	40
University support services	21	50	27	47	15	48	16	42	25	49
Campus Life	7	46	10	43	7	38	7	32	10	46
Sense of belonging to GMU community	11	38	14	38	10	35	10	29	12	39
Overall GMU experience	na^	na	na	na	21	59	21	57	35	56

\*Prior to 1997 the question read "departmental support services (e.g. advising)."

^Na means the question not asked in those years.

Proportion of seniors who said each computer technology/application was incorporated into 10 or more Mason classes as reported on the 1996, 1997 and 1998 Graduating Senior Surveys.

<b>Computer Technology</b>	<b>1996</b>	<b>1997</b>	<b>1998</b>
Word Processing	56%	64%	70%
E-mail	9%	19%	34%
Internet/WWW	4%	16%	37%
Graphics	2%	2%	6%

Average hours\* per week during last semester of senior year spent on each of four activities.

<b>Activity</b>	<b>1995 Avg. Hours</b>	<b>1996 Avg. Hours</b>	<b>1997 Avg. Hours</b>	<b>1998 Avg. Hours</b>
Time Spent in Classes/Labs	13	14	14	14
Study/Homework	12	17	16	15
Working for Pay	22	19	20	25
Interaction with/care for family	9	18	18	21

\*Average time spent by each cohort in each year.





**TOTAL UNIVERSITY PERSONNEL BY JOB CLASSIFICATION  
HEADCOUNT FOR FALL 1994 THROUGH FALL 1998**

	1994	1995	1996	1997**	1998**	Avg % of Change * 1994-98
<b>Instructional and Research</b>						
Full-Time Faculty	742	760	765	816	866	4.0%
Part-Time Faculty	504	516	543	525	583	3.8%
Graduate Assistants	423	446	475	472	471	2.8%
<b>Total</b>	<b>1,669</b>	<b>1,722</b>	<b>1,783</b>	<b>1,813</b>	<b>1,920</b>	<b>3.6%</b>
<b>Administrators and Staff</b>						
Administrative Faculty	289	280	304	330	329	3.4%
Professional/Technical	449	409	471	507	542	5.2%
Office/Clerical	208	158	152	135	124	-11.8%
Skilled/Service	194	180	175	194	197	0.6%
<b>Total</b>	<b>1,140</b>	<b>1,027</b>	<b>1,102</b>	<b>1,166</b>	<b>1,192</b>	<b>1.4%</b>
<b>Faculty and Staff Total</b>	<b>2,809</b>	<b>2,749</b>	<b>2,885</b>	<b>2,979</b>	<b>3,112</b>	<b>2.6%</b>
Temporaries	1,432	1,641	1,619	1,620	1,332	-1.1%
<b>Total w/Temporaries***</b>	<b>4,241</b>	<b>4,390</b>	<b>4,504</b>	<b>4,599</b>	<b>4,444</b>	<b>1.2%</b>

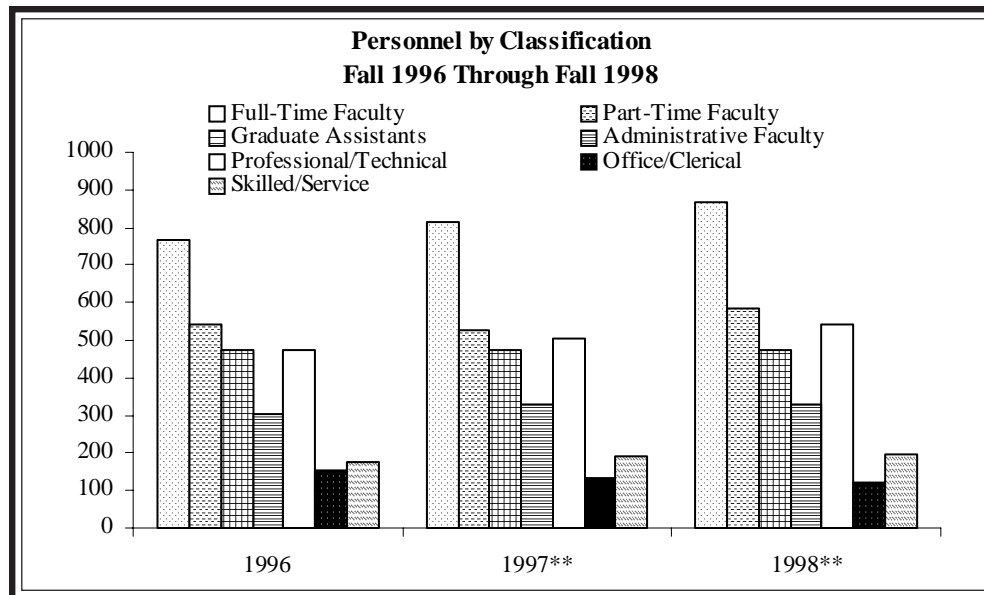
\*Average annual growth rate.

\*\* Includes faculty on leave with pay/benefits, and includes current year permanent part-time for Admin. Faculty, Professional, and Office/Clerical

\*\*\*Includes wage employees and student wages, excludes college work study.

Note: The university president is included in administrative faculty;

The dip in the temporaries total is due to improved counting methods.



UNIVERSITY PERSONNEL BY FTE AND HEADCOUNT BY GENDER AND MEAN AGE  
FALL 1998

	Total FTE	Total Hct.	N		%		Mean Age
			Female	Female	Male	Male	
<b>Instructional and Research</b>							
Full-Time Faculty	855.9	866	302	34.9%	564	65.1%	48.8
Part-Time Faculty	187.1	583	259	44.4%	324	55.6%	38.1
Graduate Assistants	73.8	471	238	50.5%	233	49.5%	30.9
<i>Subtotal</i>	1116.8	1,920	799	41.6%	1,121	58.4%	41.2
<b>Administrators and Staff</b>							
Administrative Faculty	321.8	329	184	55.9%	145	44.1%	44.7
Professional/Technical	529.9	542	363	67.0%	179	33.0%	41.7
Office/Clerical	119.9	124	114	91.9%	10	8.1%	42.4
Skilled/Service	199.0	197	29	14.7%	168	85.3%	42.5
<i>Subtotal</i>	1170.6	1,192	690	57.9%	502	42.1%	42.8
<b>Faculty &amp; Staff Total</b>	<b>2287.3</b>	<b>3,112</b>	<b>1,489</b>	<b>47.8%</b>	<b>1,623</b>	<b>52.2%</b>	<b>41.8</b>

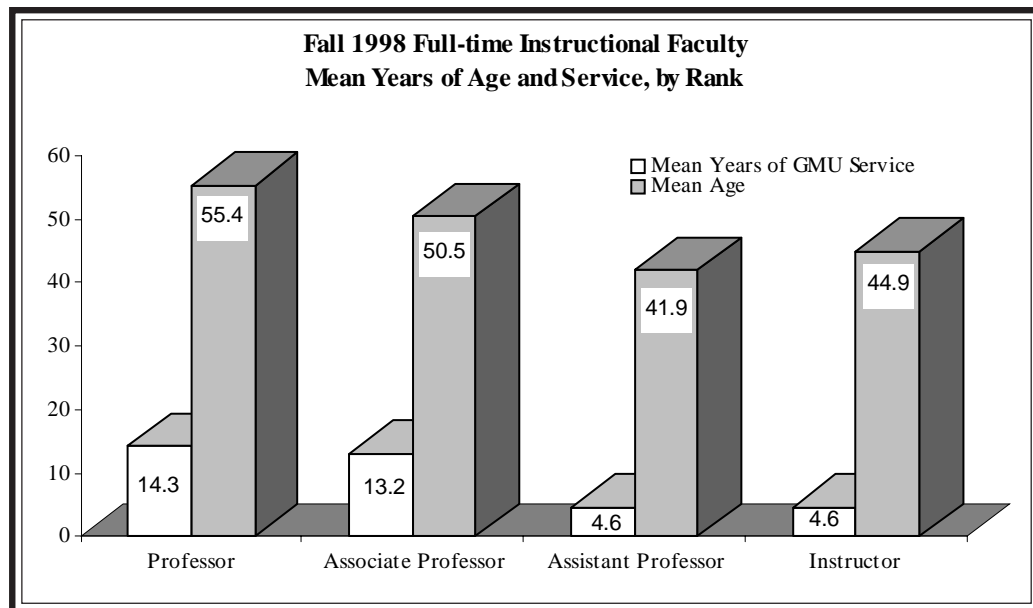
UNIVERSITY PERSONNEL BY ETHNIC DISTRIBUTION  
FALL 1998

	Total	Afr.	Asian	Hisp.	Native	Non-Res	White
		Amer.	Amer.	Amer.	Amer.	Alien	Amer.
<b>Instructional and Research</b>							
Full-Time Faculty	866	33	54	22	0	37	720
<i>% of total</i>		3.8%	6.2%	2.5%	0.0%	4.3%	83.1%
Part-Time Faculty	583	15	15	17	0	16	520
<i>% of total</i>		2.6%	2.6%	2.9%	0.0%	2.7%	89.2%
Graduate Assistants	471	14	20	15	0	159	263
<i>% of total</i>		3.0%	4.2%	3.2%	0.0%	33.8%	55.8%
<b>Administrators and Staff</b>							
Admin Faculty	329	32	13	4	0	3	277
<i>% of total</i>		9.7%	4.0%	1.2%	0.0%	0.9%	84.2%
Professional/Tech.	542	64	34	12	0	3	429
<i>% of total</i>		11.8%	6.3%	2.2%	0.0%	0.6%	79.2%
Office/Clerical	124	23	9	3	0	0	89
<i>% of total</i>		18.5%	7.3%	2.4%	0.0%	0.0%	71.8%
Skilled/Service	197	37	16	12	2	3	127
<i>% of total</i>		18.8%	8.1%	6.1%	1.0%	1.5%	64.5%
<b>Faculty &amp; Staff Total</b>	<b>3,112</b>	<b>218</b>	<b>161</b>	<b>85</b>	<b>2</b>	<b>221</b>	<b>2,425</b>
<i>% of total</i>		7.0%	5.2%	2.7%	0.1%	7.1%	77.9%

**FULL-TIME INSTRUCTIONAL FACULTY AGE AND YEARS OF SERVICE, BY RANK  
FALL 1998**

	Total	Age 29 or Less	Age 30- 39	Age 40- 49	Age 50- 59	Age 60 or More	Mean Age	Mean Years of GMU Service
Professor <i>% of total</i>	261	0 0.0%	8 3.1%	57 21.8%	122 46.7%	74 28.4%	55.4	14.3
Associate Professor <i>% of total</i>	269	0 0.0%	25 9.3%	106 39.4%	112 41.6%	26 9.7%	50.5	13.2
Assistant Professor <i>% of total</i>	166	7 4.2%	75 45.2%	50 30.1%	26 15.7%	8 4.8%	41.9	4.6
Instructor <i>% of total</i>	63	2 3.2%	16 25.4%	26 41.3%	16 25.4%	3 4.8%	44.9	4.6
<b>Total</b>	<b>759</b>	<b>9</b> 1.2%	<b>124</b> 16.3%	<b>239</b> 31.5%	<b>276</b> 36.4%	<b>111</b> 14.6%	<b>49.8</b>	<b>11.0</b>

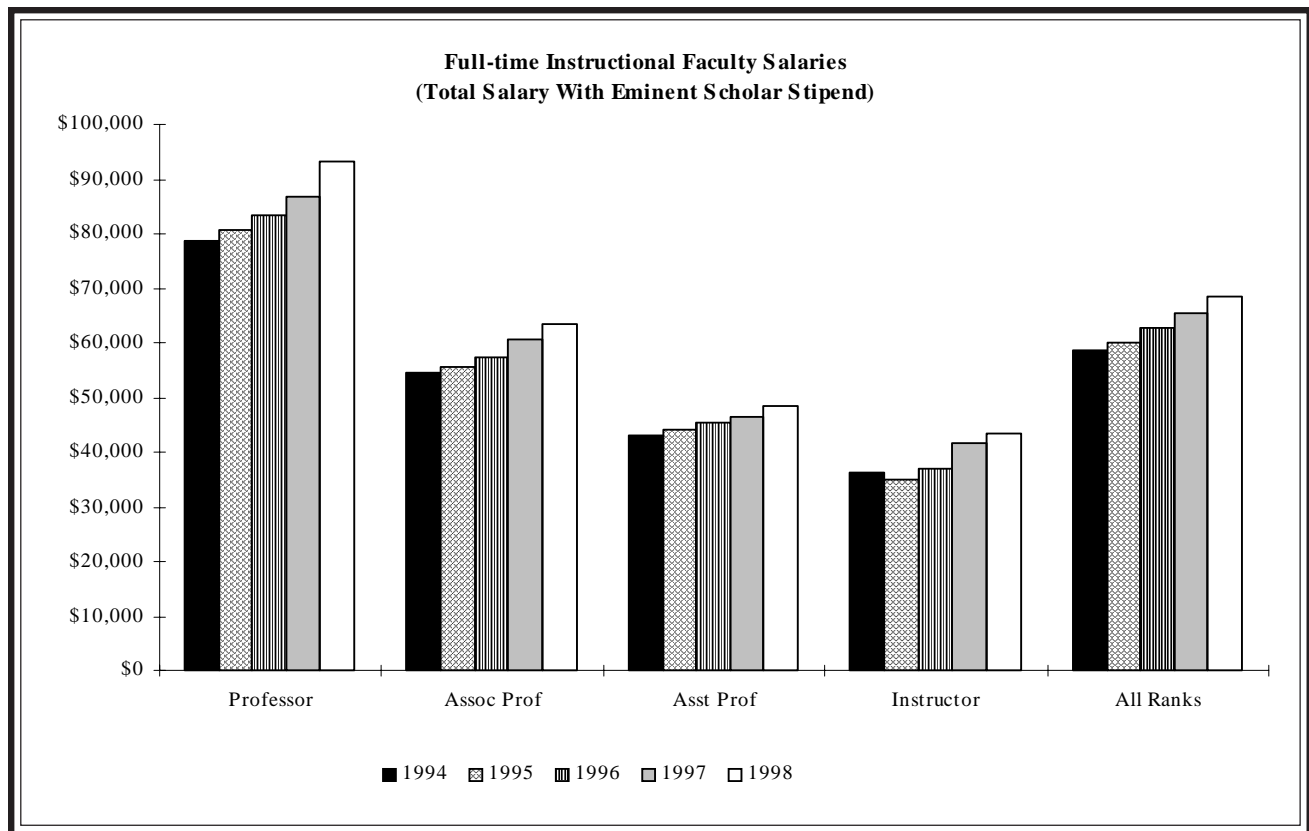
*Instructional faculty are those full-time employees paid 50% or more from Educational and General (ledger1) state funded instructional monies.*



**FULL-TIME INSTRUCTIONAL FACULTY SALARY  
ACADEMIC YEARS 1997-98 AND 1998-99**

	1997-98	1997-98	1998-99	1998-99	% Change	% Change
	State Salary	Total Salary	State Salary	Total Salary	State Salary	Total Salary
Professor	\$81,730	\$86,717	\$87,466	\$93,190	7.0%	7.5%
Associate	\$60,781	\$60,781	\$63,176	\$63,274	3.9%	4.1%
Assistant	\$46,372	\$46,372	\$48,463	\$48,506	4.5%	4.6%
Instructor	\$41,662	\$41,662	\$42,907	\$43,335	3.0%	4.0%
<b>University Total</b>	<b>\$63,551</b>	<b>\$65,275</b>	<b>\$66,493</b>	<b>\$68,520</b>	<b>4.6%</b>	<b>5.0%</b>

*NOTE: All salaries have been converted to a 9/10 month contract equivalent and 1.0 FTE.  
Raises for Eminent Scholars (Included with Professors) were in the stipend, not the base for 1997-98.  
Salaries reflect the raises for both years.  
State salary is that portion of the salary funded through Educational and General ledger 1 appropriations.*





**FULL-TIME FACULTY BY DIVISION/DEPARTMENT\*/RANK/TENURE STATUS  
FALL 1998**

	RANK					Tenure Status			Type		% With Terminal Degree <sup>1</sup>
	Prof	Assoc	Asst	Instr	Grand Total	Tenured	Prob.	Restrict.	Instr.	Rsrch.	
<b>Institute of the Arts Total</b>	<b>2</b>	<b>10</b>	<b>8</b>	<b>2</b>	<b>22</b>	<b>4</b>	<b>4</b>	<b>14</b>	<b>21</b>	<b>1</b>	<b>82.4%</b>
CVIT	0	1	1	0	2	0	0	2	2	0	100.0%
Dance	1	3	1	2	7	2	2	3	7	0	80.0%
Institute of the Arts	0	1	0	0	1	0	1	0	1	0	100.0%
Studio Art	1	4	3	0	8	2	0	6	7	1	100.0%
Theatre	0	1	3	0	4	0	1	3	4	0	50.0%
<b>College of Arts and Sciences Total</b>	<b>120</b>	<b>152</b>	<b>84</b>	<b>25</b>	<b>381</b>	<b>263</b>	<b>44</b>	<b>74</b>	<b>367</b>	<b>14</b>	<b>90.7%</b>
Biology	11	13	7	1	32	24	2	6	31	1	96.8%
CAS Dean	0	0	0	1	1	0	0	1	1	0	0.0%
Chemistry	4	9	1	0	14	13	1	0	14	0	100.0%
Communication	6	5	0	4	15	11	0	4	15	0	78.6%
Cultural Studies	0	1	0	0	1	1	0	0	1	0	100.0%
Economics	11	6	3	1	21	16	3	2	19	2	100.0%
English	19	22	16	1	58	41	5	12	58	0	80.7%
Geographic and Earth Science	2	1	6	1	10	3	3	4	10	0	90.0%
History	7	13	11	1	32	20	6	6	30	2	96.8%
Honors Program	0	1	0	0	1	1	0	0	1	0	100.0%
MA in Telecommunications	1	0	0	0	1	1	0	0	1	0	100.0%
Mathematical Sciences	7	14	2	5	28	21	2	5	28	0	82.1%
Modern/Classical Languages	9	8	5	3	25	18	2	5	25	0	88.0%
Music	4	4	2	0	10	7	3	0	10	0	80.0%
Philosophy and Religious Studies	2	10	4	0	16	12	3	1	16	0	93.8%
Physics and Astronomy	7	2	4	1	14	8	1	5	13	1	92.9%
Psychology	11	15	8	2	36	24	5	7	32	4	97.1%
Public/International Affairs	7	13	7	1	28	19	3	6	28	0	96.4%
Shared Research/Instrumentation Facility	1	2	1	2	6	1	0	5	2	4	60.0%
Social/Organizational Learning	1	3	2	0	6	3	2	1	6	0	100.0%
Sociology and Anthropology	10	10	5	1	26	19	3	4	26	0	96.2%
<b>Biosciences/Bioinformatics/Biotech Total</b>	<b>2</b>	<b>5</b>	<b>0</b>	<b>3</b>	<b>10</b>	<b>2</b>	<b>1</b>	<b>7</b>	<b>7</b>	<b>3</b>	<b>90.0%</b>
<b>Inst for Comp. Science &amp; Informatics Total</b>	<b>20</b>	<b>6</b>	<b>3</b>	<b>13</b>	<b>42</b>	<b>8</b>	<b>3</b>	<b>31</b>	<b>11</b>	<b>31</b>	<b>78.1%</b>
<b>Inst. for Conf. Analysis &amp; Resolution Total</b>	<b>6</b>	<b>2</b>	<b>3</b>	<b>1</b>	<b>12</b>	<b>5</b>	<b>2</b>	<b>5</b>	<b>11</b>	<b>1</b>	<b>72.7%</b>
<b>Graduate School of Education Total</b>	<b>21</b>	<b>30</b>	<b>17</b>	<b>1</b>	<b>69</b>	<b>37</b>	<b>23</b>	<b>9</b>	<b>65</b>	<b>4</b>	<b>92.8%</b>
GSE Instruction	16	20	9	0	45	28	14	3	42	3	97.8%
Health, Fitness, Recreation Resources	4	6	1	1	12	8	2	2	12	0	91.7%
Institute For Educ Transformation	1	3	5	0	9	1	5	3	8	1	77.8%
Special Education Licensure Fulfillment	0	0	1	0	1	0	0	1	1	0	100.0%
Universal Teachers	0	1	1	0	2	0	2	0	2	0	50.0%

\* Departments as listed in Financial Resources System

<sup>1</sup> Excludes faculty with missing data on the database

continued next page

FULL-TIME FACULTY BY DIVISION/DEPARTMENT\*/RANK/TENURE STATUS  
FALL 1998

	RANK					Tenure Status			Type		% With Terminal Degree <sup>1</sup>
	Prof	Assoc	Asst	Instr	Grand Total	Tenured	Prob.	Restrict.	Instr.	Rsrch.	
<b>Info Technology &amp; Engineering Total</b>	<b>38</b>	<b>36</b>	<b>15</b>	<b>6</b>	<b>95</b>	<b>63</b>	<b>15</b>	<b>17</b>	<b>79</b>	<b>16</b>	<b>94.4%</b>
Applied & Engineering Statistics	3	4	1	0	8	7	1	0	8	0	100.0%
C3I Center	1	0	1	0	2	0	0	2	0	2	0.0%
Center for Computational Statistics	0	0	0	1	1	0	0	1	0	1	0.0%
Center For Software Syst Eng 2	0	1	0	0	1	0	0	1	0	1	0.0%
Civil Eng & Infrastructure	2	3	0	0	5	3	1	1	4	1	100.0%
Computer Science	9	6	8	2	25	15	6	4	23	2	100.0%
Electrical and Computer Engineering	8	11	2	0	21	17	2	2	19	2	100.0%
Info & Software Sys Eng	6	6	3	1	16	9	4	3	13	3	93.8%
IT&E Dean	1	1	0	1	3	1	0	2	2	1	100.0%
Operations Research Engineering	7	0	0	0	7	7	0	0	7	0	100.0%
Systems Engineering	1	4	0	1	6	4	1	1	3	3	83.3%
<b>School of Management Total</b>	<b>15</b>	<b>14</b>	<b>22</b>	<b>11</b>	<b>62</b>	<b>26</b>	<b>11</b>	<b>25</b>	<b>62</b>	<b>0</b>	<b>87.1%</b>
Accounting & Consulting	3	5	4	2	14	6	4	4	14	0	92.9%
Business and Legal Studies	0	2	0	1	3	2	0	1	3	0	100.0%
Decision Support	0	1	5	1	7	1	3	3	7	0	85.7%
Finance	3	2	2	1	8	5	1	2	8	0	87.5%
Management	3	1	5	3	12	3	1	8	12	0	75.0%
Management Information Systems	2	1	3	1	7	3	0	4	7	0	100.0%
Marketing	4	2	2	1	9	6	2	1	9	0	88.9%
SOM Dean	0	0	1	1	2	0	0	2	2	0	50.0%
<b>School of Law Total</b>	<b>18</b>	<b>9</b>	<b>1</b>	<b>0</b>	<b>28</b>	<b>19</b>	<b>7</b>	<b>2</b>	<b>28</b>	<b>0</b>	<b>100.0%</b>
Law	17	9	1	0	27	18	7	2	27	0	100.0%
Office of the Dean/LAW	1	0	0	0	1	1	0	0	1	0	100.0%
<b>New Century College Total</b>	<b>2</b>	<b>5</b>	<b>8</b>	<b>2</b>	<b>17</b>	<b>4</b>	<b>3</b>	<b>10</b>	<b>16</b>	<b>1</b>	<b>62.5%</b>
New Century College	0	4	6	2	12	1	3	8	11	1	45.5%
Social Work	2	1	2	0	5	3	0	2	5	0	100.0%
<b>Nursing &amp; Health Sciences Total</b>	<b>9</b>	<b>15</b>	<b>13</b>	<b>12</b>	<b>49</b>	<b>17</b>	<b>6</b>	<b>26</b>	<b>47</b>	<b>2</b>	<b>57.4%</b>
<b>Institute of Public Policy Total</b>	<b>13</b>	<b>6</b>	<b>8</b>	<b>18</b>	<b>45</b>	<b>14</b>	<b>2</b>	<b>29</b>	<b>18</b>	<b>27</b>	<b>70.6%</b>
Center for Advance of Public Health	0	1	0	1	2	0	0	2	0	2	100.0%
Center for Policy Analysis	0	0	0	2	2	0	0	2	0	2	0.0%
Center For Regional Analysis	0	0	1	5	6	0	0	6	0	6	40.0%
Entrepreneurship Center	0	0	2	8	10	0	0	10	0	10	25.0%
Institute of Public Policy	13	5	5	2	25	14	2	9	18	7	90.9%
<b>Academic Administration Total</b>	<b>14</b>	<b>0</b>	<b>0</b>	<b>0</b>	<b>14</b>	<b>14</b>	<b>0</b>	<b>0</b>	<b>14</b>	<b>0</b>	<b>92.9%</b>
Provost's Office	1	0	0	0	1	1	0	0	1	0	100.0%
Robinson Professors	13	0	0	0	13	13	0	0	13	0	92.3%
<b>Krasnow Institute Total</b>	<b>3</b>	<b>0</b>	<b>2</b>	<b>4</b>	<b>9</b>	<b>1</b>	<b>1</b>	<b>7</b>	<b>2</b>	<b>7</b>	<b>75.0%</b>
<b>University Life Total</b>	<b>0</b>	<b>0</b>	<b>0</b>	<b>11</b>	<b>11</b>	<b>0</b>	<b>0</b>	<b>11</b>	<b>11</b>	<b>0</b>	<b>0.0%</b>
<b>GRAND TOTAL</b>	<b>283</b>	<b>290</b>	<b>184</b>	<b>109</b>	<b>866</b>	<b>477</b>	<b>122</b>	<b>267</b>	<b>759</b>	<b>107</b>	<b>84.3%</b>

\* Departments as listed in Financial Resources System

<sup>1</sup> Excludes faculty with missing data on the database

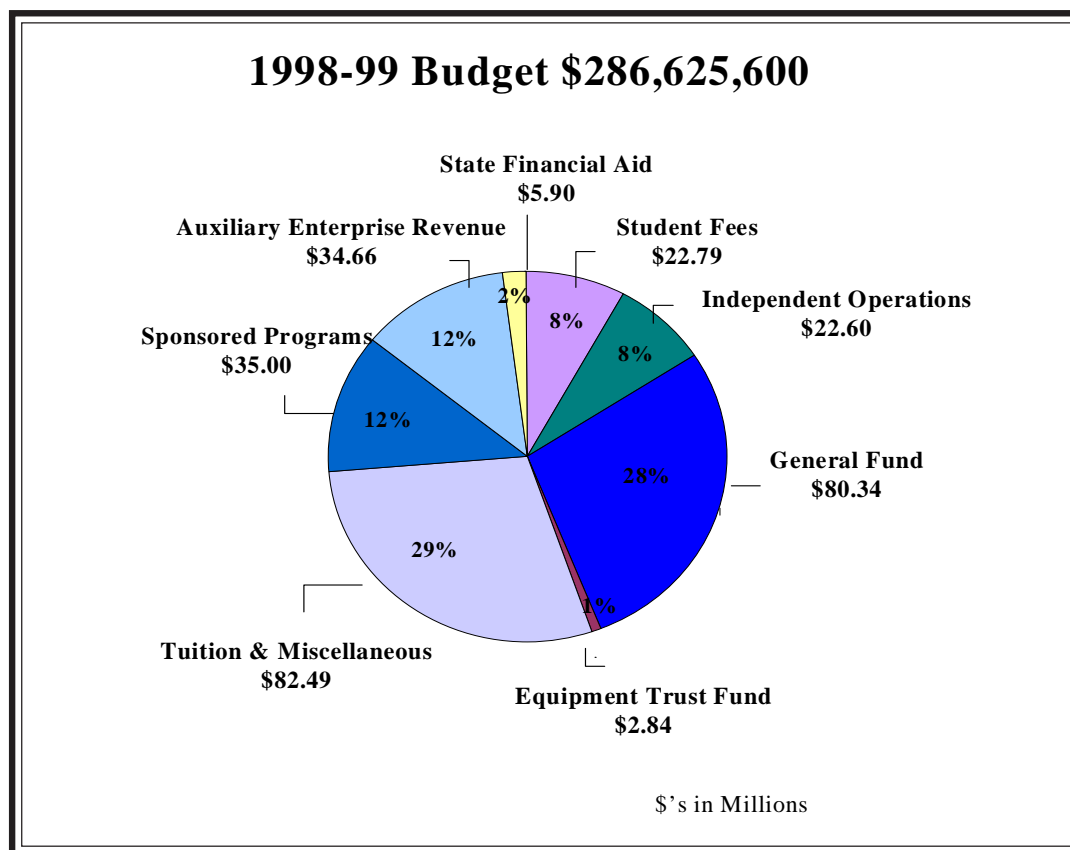
COMPARISON OF AAUP PEER FACULTY SALARY DATA  
YEARS 1996 AND 1997

<b>Peer Institutions</b>	<b>1996 Salary</b>	<b>1997 Salary</b>	<b>Percent Change</b>
University of Connecticut	\$70,900	\$71,800	1.3%
Temple University	68,300	69,500	1.8%
University of Iowa	64,000	66,000	3.1%
SUNY - Buffalo	62,700	63,100	0.6%
Loyola University of Chicago	61,100	63,100	3.3%
SUNY - Albany	61,600	61,200	-0.6%
University of Rhode Island	59,400	61,200	3.0%
Georgia State University	59,000	61,200	3.7%
University of Cincinnati	58,900	61,000	3.6%
University of Pittsburgh Main Campus	58,900	60,200	2.2%
Wayne State University	57,400	59,300	3.3%
<b>George Mason University</b>	<b>55,585</b>	<b>58,920</b>	<b>6.0%</b>
University of Kentucky	57,000	58,700	3.0%
Syracuse University, Main Campus	56,600	57,700	1.9%
University of Tennessee at Knoxville	56,900	56,700	-0.4%
University of Missouri, Kansas City	54,800	56,300	2.7%
University of South Carolina at Columbia	54,700	56,300	2.9%
University of Wisconsin-Milwaukee	54,400	55,900	2.8%
University of Kansas, Main Campus	53,800	55,800	3.7%
Western Michigan University	53,400	55,400	3.7%
University of South Florida	51,100	55,300	8.2%
University of Louisville	51,900	54,200	4.4%
University of Oklahoma, Norman Campus	50,800	53,200	4.7%
University of Utah	55,900	52,800	-5.5%
University of New Mexico, All Campuses	52,000	52,000	0.0%
<b>Average</b>	<b>57,729</b>	<b>59,079</b>	<b>2.3%</b>
Standard Deviation	5,152	5,060	
60th Percentile	58,600	60,020	

*Note: All peer data are supplied by SCHEV from the AAUP Faculty Salary Survey.  
GMU salaries are based on 9 month 1.0 FTE instructional faculty and exclude  
the SCHEV-calculated cost-of-living adjustment.*



1998-99 UNIVERSITY BUDGET

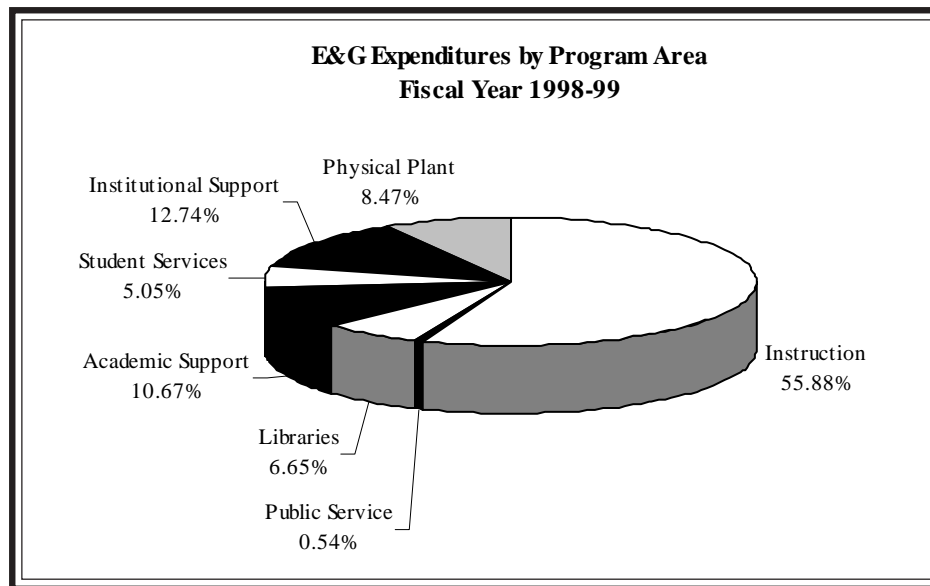


	1997-98	1998-99	% Change
<b>Educational and General</b>			
General Fund	\$70,430,000	\$80,343,000	14.1%
Tuition/Misc.	77,200,000	82,492,000	6.9%
<b>Auxiliary Enterprises</b>			
Student Fees	22,300,000	22,792,000	2.2%
Aux. Ent. Revenue	32,750,000	34,662,600	5.8%
Independent Operations	22,600,000	22,600,000	--
<b>Sponsored Programs</b>	32,500,000	35,000,000	7.7%
<b>State Financial Aid</b>	5,647,000	5,900,000	3.8%
<b>Equipment Trust Fund</b>	5,185,000	2,836,000	-45.0%
<b>Total</b>	<b>\$268,612,000</b>	<b>\$286,625,600</b>	<b>6.7%</b>

*\*Excludes capital outlay and private funding.*

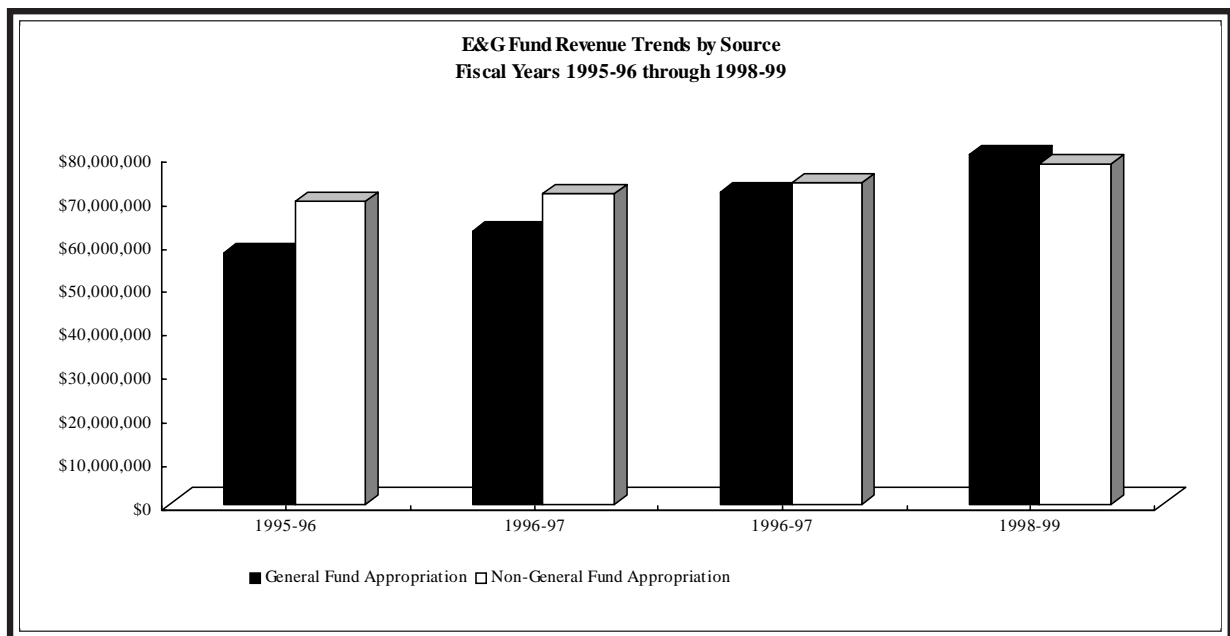
**EDUCATIONAL AND GENERAL EXPENDITURES BY PROGRAM AREA  
FISCAL YEARS 1995-96 THROUGH 1998-99**

<b>Program Area</b>	<b>1995-96 Actual</b>	<b>% of Total</b>	<b>1996-97 Actual</b>	<b>% of Total</b>	<b>1997-98 Actual</b>	<b>% of Total</b>	<b>1998-99 Budget</b>	<b>% of Total</b>
Instruction	\$73,283,751	57.80%	\$77,978,571	58.31%	\$87,517,174	59.59%	\$93,383,400	59.04%
Public Service	790,593	0.62%	857,420	0.64%	747,167	0.51%	861,100	0.54%
Libraries	9,364,565	7.39%	9,107,223	6.81%	10,180,231	6.93%	10,521,000	6.65%
Academic Support	7,633,318	6.02%	10,003,251	7.48%	9,591,022	6.53%	11,876,700	7.51%
Student Services	6,440,949	5.08%	7,144,808	5.34%	7,875,584	5.36%	7,981,800	5.05%
Institutional Support	18,711,690	14.76%	16,626,796	12.43%	18,838,832	12.83%	20,158,060	12.74%
Physical Plant	10,567,466	8.33%	12,024,050	8.99%	12,114,074	8.25%	13,390,000	8.47%
<b>Total</b>	<b>\$126,792,332</b>	<b>100.00%</b>	<b>\$133,742,119</b>	<b>100.00%</b>	<b>\$146,864,084</b>	<b>100.00%</b>	<b>\$158,172,060</b>	<b>100.00%</b>
Percent Increase			5.48%		9.81%		7.70%	



**EDUCATIONAL AND GENERAL FUND REVENUES BY SOURCE  
FISCAL YEARS 1995-96 THROUGH 1998-99**

Source	Actual 1995-96	Actual 1996-97	Actual 1997-98	Budget 1998-99
State Appropriation	56,531,784	61,872,756	70,021,472	78,783,351
Equipment Trust Fund Lease Payment	869,183	601,311	1,585,482	1,559,922
<b>General Fund State Appropriation</b>	<b>\$57,400,967</b>	<b>\$62,474,067</b>	<b>\$71,606,954</b>	<b>\$80,343,273</b>
Tuition	64,471,437	66,329,574	68,457,116	70,964,200
Admission/Graduation Fees	634,191	625,543	612,809	625,000
Higher Education Operating Revenues	65,105,628	66,955,117	69,069,925	71,589,200
Clinics/Fees	129,966	121,124	92,429	73,750
Public Service/Community Education	909,613	907,485	1,081,922	1,070,000
Indirect Cost Reimbursement	1,067,101	1,099,967	1,233,348	1,530,000
Miscellaneous	1,088,013	1,077,972	1,361,901	2,366,637
Equipment Trust Fund Reimbursement	171,387	52,404	595,600	0
English Language Institute	923,278	1,058,283	1,210,284	1,200,000
Other	4,289,358	4,317,235	4,465,484	6,240,387
<b>Non-General Fund State Appropriation</b>	<b>69,394,986</b>	<b>71,272,352</b>	<b>73,535,409</b>	<b>77,829,587</b>
<b>Total E&amp;G Revenues</b>	<b>\$126,795,953</b>	<b>\$133,746,419</b>	<b>\$146,252,363</b>	<b>\$158,172,860</b>

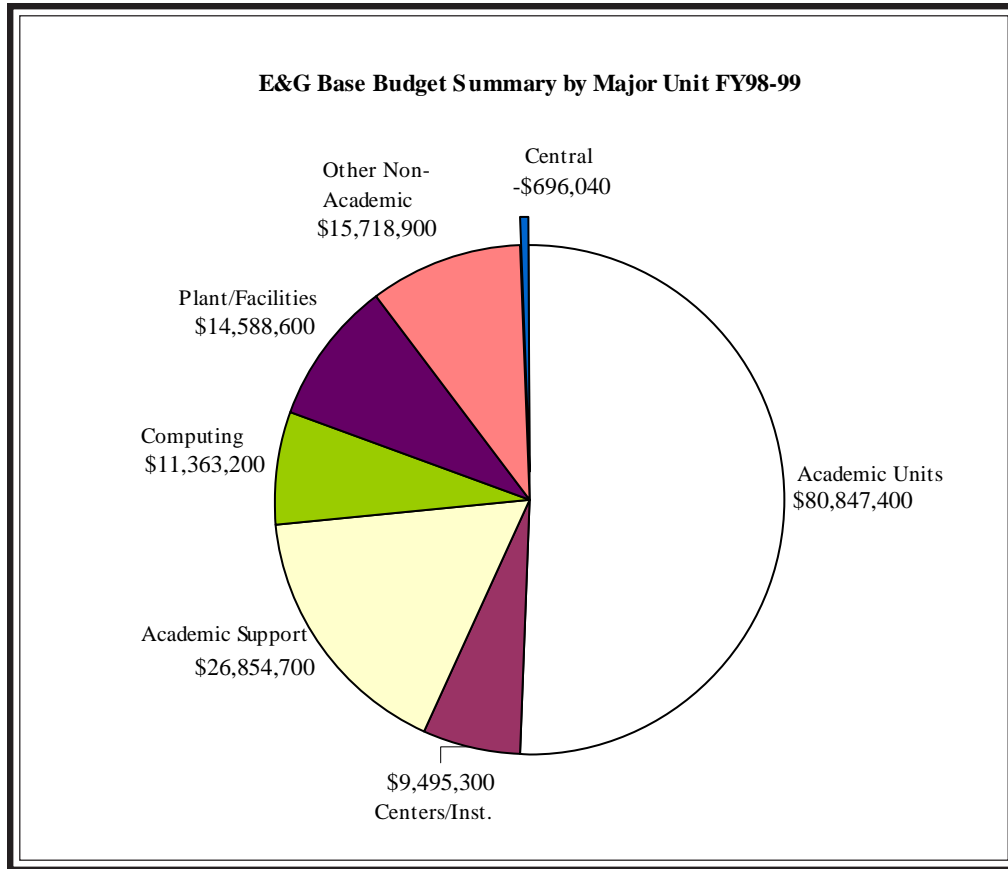


**E&G BASE BUDGET SUMMARY BY MAJOR UNIT  
FISCAL YEAR 1998-99**

<b>Unit</b>	<b>Personal Services</b>	<b>Non- Personnel</b>	<b>Total FTE</b>	<b>Budget</b>	<b>Percent of Total</b>
College of Arts & Sciences	33,867,800	1,389,000	566.26	35,256,800	22.29%
Nursing/Health Sciences	4,235,000	168,800	69.53	4,403,800	2.78%
Graduate School of Education	7,985,500	518,700	147.40	8,504,200	5.38%
New Century College	2,161,900	228,600	41.75	2,390,500	1.51%
Info Tech/Engineering	10,967,500	339,000	135.15	11,306,500	7.15%
School of Law	5,778,800	1,350,500	74.31	7,129,300	4.51%
School of Management	8,242,200	432,800	118.25	8,675,000	5.48%
Summer	3,178,300	3,000	75.00	3,181,300	2.01%
<b>Total Academic Units</b>	<b>\$76,417,000</b>	<b>\$4,430,400</b>	<b>\$1,227.65</b>	<b>\$80,847,400</b>	<b>51.11%</b>
Conflict Analysis & Resolution	1,112,300	215,300	13.00	1,327,600	0.84%
Computational Sci./Informatics	1,359,100	127,300	15.02	1,486,400	0.94%
Institute of the Arts	1,922,600	165,100	36.25	2,087,700	1.32%
Inst for Biosci/Bioinform/Biotech	1,067,600	127,500	11.07	1,195,100	0.76%
Institute of Public Policy	3,097,500	301,000	37.51	3,398,500	2.15%
<b>Total Centers &amp; Inst.</b>	<b>\$8,559,100</b>	<b>\$936,200</b>	<b>\$112.85</b>	<b>\$9,495,300</b>	<b>6.00%</b>
Enrollment Services	3,075,100	498,200	61.75	3,573,300	2.26%
University Life	3,141,500	666,900	59.75	3,808,400	2.41%
Instructional Support	2,066,500	1,993,400	3.00	4,059,900	2.57%
Vice Pres Info Technology	1,341,300	284,100	17.00	1,625,400	1.03%
Library	4,218,700	4,673,600	89.00	8,892,300	5.62%
Professional Development	499,100	221,900	10.00	721,000	0.46%
Provost	3,126,400	1,048,000	45.77	4,174,400	2.64%
<b>Total Academic Support</b>	<b>\$17,468,600</b>	<b>\$9,386,100</b>	<b>\$286.27</b>	<b>\$26,854,700</b>	<b>16.98%</b>
<b>Total Academic</b>	<b>\$102,444,700</b>	<b>\$14,752,700</b>	<b>\$1,626.77</b>	<b>\$117,197,400</b>	<b>74.09%</b>
UCIS	6,812,000	4,551,200	105.10	11,363,200	7.18%
EVP Admin/Distrib Univ	583,300	173,200	9.00	756,500	0.48%
Security/Access	2,216,300	385,200	49.75	2,601,500	1.64%
Plant/Facilities	6,413,800	8,174,800	159.00	14,588,600	9.22%
Total Finance & Planning	5,788,600	1,604,600	108.61	7,393,200	4.67%
Executive Affairs	1,292,200	200,000	18.10	1,492,200	3.40%
University Development	999,900	95,300	16.25	1,095,200	3.40%
University Relations	1,374,100	1,006,200	25.35	2,380,300	3.40%
<b>Total Non-Academic</b>	<b>\$25,480,200</b>	<b>\$16,190,500</b>	<b>\$491.16</b>	<b>\$41,670,700</b>	<b>26.35%</b>
Central	914,800	-1,610,840.00	26.09	-696,040.00	-0.44%
<b>Total</b>	<b>\$128,839,700</b>	<b>\$29,332,360</b>	<b>\$2,144.02</b>	<b>\$158,172,060</b>	<b>100.00%</b>
<i>% of Total</i>	81.5%	18.5%		100.0%	



**E&G BASE BUDGET SUMMARY BY MAJOR UNIT  
FISCAL YEAR 1998-99**

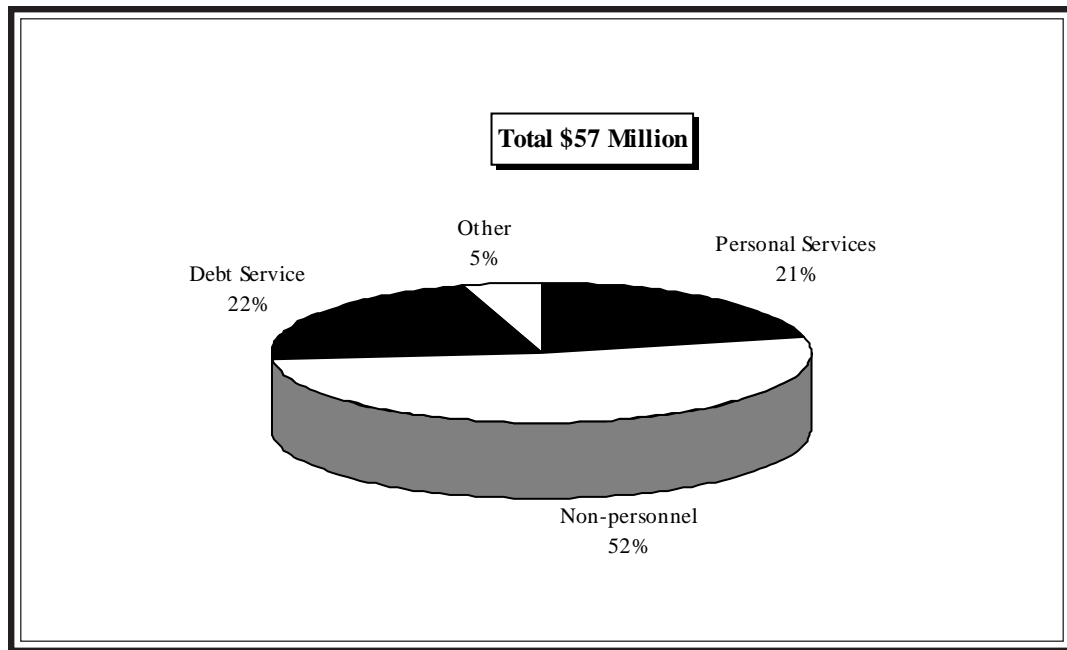
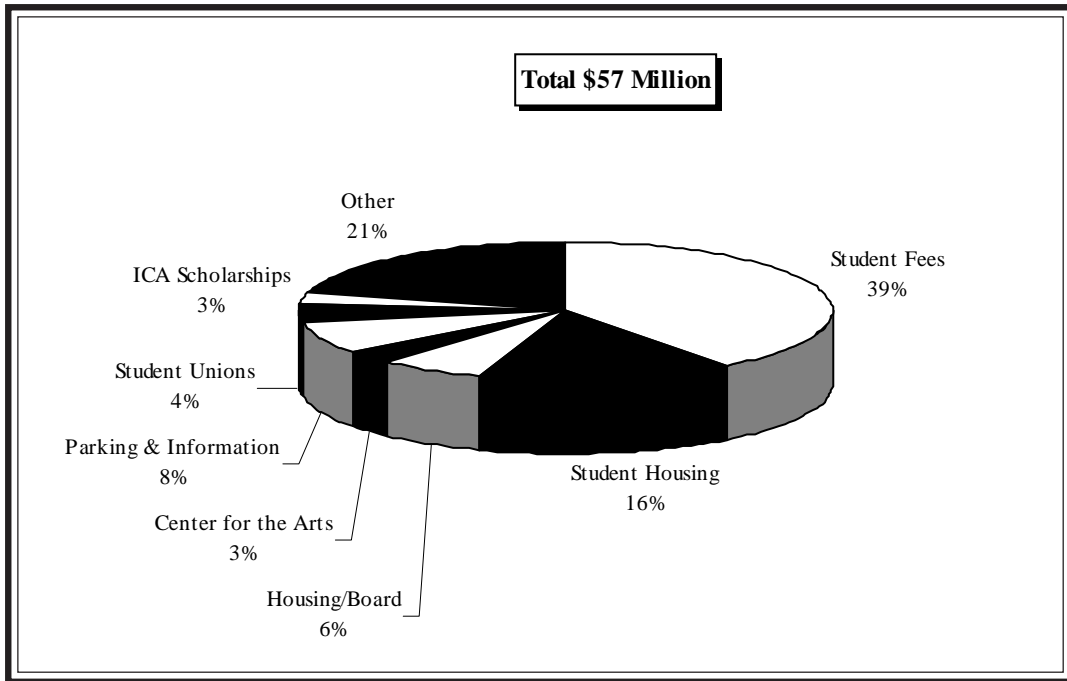


	1997-98	1998-99	% Change
Academic Units	73,790,400	80,847,400	9.56%
Centers and Institutes	10,437,400	9,495,300	-9.02%
Academic Support	23,035,568	26,854,700	16.57%
Computing	9,770,200	11,363,200	16.30%
Plant/Facilities	13,734,400	14,588,600	6.21%
Other Non-academic	15,422,200	15,718,900	1.92%
Central	-2,023,507	-696,040	65.60%
<b>Total</b>	<b>\$144,166,661</b>	<b>\$158,172,060</b>	<b>9.71%</b>

**AUXILIARY ENTERPRISES BUDGETED REVENUES/EXPENDITURES BY SOURCE  
FISCAL YEAR 1998-99**

<b>Source</b>	<b>Student Fees</b>	<b>% of Total</b>	<b>Other Income</b>	<b>Total Revenue</b>	<b>Operating Expenses</b>	<b>Debt Service</b>	<b>Total Expense</b>
"All University Card" System	\$126,200	0.57%	\$38,500	\$164,700	\$164,700	\$0	\$164,700
Athletic Facility Improvements	300,000	1.35%	0	\$300,000	300,000	0	\$300,000
Campus Access	0	0.00%	4,418,800	\$4,418,800	2,669,200	1,982,500	\$4,651,700
Central Reserve	42,900	1.37%	0	\$42,900	0	0	\$0
Child Development Center	0	0.00%	360,200	\$360,200	354,000	0	\$354,000
Computer Store	0	0.00%	2,700,000	\$2,700,000	2,696,800	0	\$2,696,800
Disabled Student Services	195,100	0.86%	8,400	\$203,500	203,500	0	\$203,500
Facility Reserves	1,839,800	4.04%	1,411,900	\$3,251,700	1,639,100	1,062,600	\$2,701,700
GMU Pay Phones	0	0.00%	158,200	\$158,200	90,300	0	\$90,300
Health Services	765,500	3.18%	290,000	\$1,055,500	1,051,500	0	\$1,051,500
Hemlock Overlook/Bull Run Marina	0	0.00%	925,000	\$925,000	915,000	0	\$915,000
Indirect Cost Charge	0	0.90%	0	\$0	1,000,000	0	\$1,000,000
Institute of the Arts	2,748,400	12.35%	1,715,700	\$4,464,100	3,596,500	867,600	\$4,464,100
Intercollegiate Athletics	5,316,500	22.82%	51,600	\$5,368,100	5,368,100	0	\$5,368,100
Intercollegiate Athletics Scholarships	350,000	1.24%	1,650,000	\$2,000,000	2,300,000	0	\$2,300,000
Interest Income	0	0.00%	1,000,000	\$1,000,000	0	0	\$0
Krasnow Institute	0	0.00%	0	\$0	0	0	\$0
"Mason Lines"	0	0.00%	250,600	\$250,600	250,600	0	\$250,600
Other Reserves	211,900	0.75%	0	\$211,900	211,900	0	\$211,900
Patriot Center	1,605,900	7.33%	0	\$1,605,900	354,800	1,251,100	\$1,605,900
Photo ID	73,400	0.33%	8,000	\$81,400	81,400	0	\$81,400
Presidential Scholars	255,000	1.57%	95,000	\$350,000	350,000	0	\$350,000
Print Services	0	0.00%	1,909,000	\$1,909,000	1,881,300	0	\$1,881,300
Recreation Sports Complex	2,134,600	9.43%	44,200	\$2,178,800	1,701,500	477,300	\$2,178,800
Student Activities Administration	1,011,700	4.85%	14,000	\$1,025,700	1,025,700	0	\$1,025,700
Student Board	0	0.00%	3,650,000	\$3,650,000	3,614,100	0	\$3,614,100
Student Clubs and Organizations	999,900	4.65%	398,000	\$1,397,900	1,397,900	0	\$1,397,900
Student Housing	0	0.00%	8,985,900	\$8,985,900	5,142,600	3,756,600	\$8,899,200
Student Unions/University Center	3,077,400	14.55%	2,336,700	\$5,414,100	2,749,800	2,609,300	\$5,359,100
Summer Transition/Open/House/Orientation	103,400	0.50%	345,700	\$449,100	449,100	0	\$449,100
Telecommunications	0	0.00%	1,817,200	\$1,817,200	1,807,000	0	\$1,807,000
Telecommunications Infrastructure	829,300	3.72%	0	\$829,300	317,700	511,600	\$829,300
University Police/Escort Service	489,800	2.04%	0	\$489,800	489,800	0	\$489,800
University Services	315,000	1.62%	76,200	\$391,200	384,000	0	\$384,000
<b>Total Auxiliary Enterprise Budget</b>	<b>\$22,791,700</b>	<b>100.0%</b>	<b>\$34,658,800</b>	<b>\$57,450,500</b>	<b>\$44,557,900</b>	<b>\$12,518,600</b>	<b>\$57,076,500</b>
<i>% of Total</i>	40.46%		59.54%	100.0%	79.20%	20.80%	100.0%

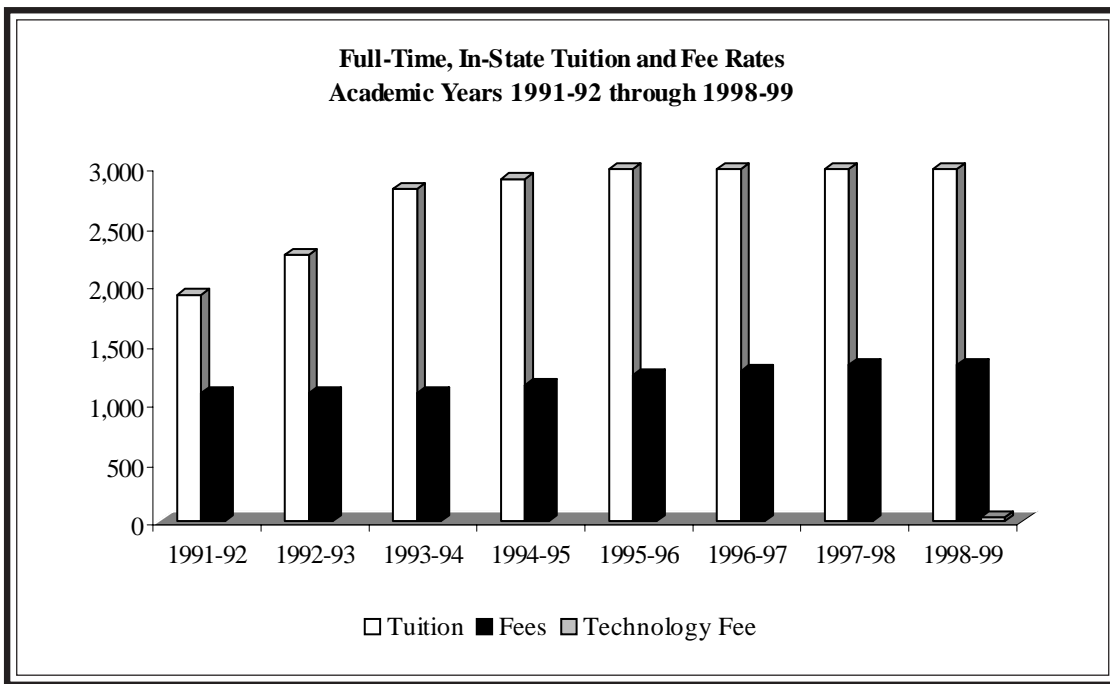
AUXILIARY ENTERPRISES FUND BUDGETED REVENUES AND EXPENDITURES  
FISCAL YEAR 1998-99



**TUITION AND FEE RATES  
ACADEMIC YEARS 1991-92 THROUGH 1998-99**

Academic Year	In-State	Out-of-State	Fees	Technology Fee	In-State Total	Out-of-State Total	In-State	Out-of-State
							Per Credit Hour	Per Credit Hour
1991-92	1,908	6,384	1,080		2,988	7,464	124.50	311.00
1992-93	2,256	7,524	1,080		3,336	8,604	139.00	358.50
1993-94	2,808	8,976	1,080		3,888	10,056	162.00	419.00
1994-95	2,892	9,648	1,152		4,044	10,800	168.50	450.00
1995-96	2,976	10,368	1,236		4,212	11,604	175.50	483.50
1996-97	2,976	10,680	1,272		4,248	11,952	177.00	498.00
1997-98	2,976	10,920	1,320		4,296	12,240	179.00	510.00
1998-99	2,976	11,136	1,320	42.00	4,344	12,504	181.00	521.00

*Note: These rates do not apply to students in the School of Law, which has a separate tuition and fee schedule*



**CAMPUS BUILDINGS BY FIRST YEAR OF OCCUPANCY  
YEAR ENDING DECEMBER 1998**

<b>Year Building</b>	<b>Gross Square Footage</b>	<b>Gross Replacement Value</b>
1960 George's Hall	7,500	\$602,752
1964 East Building	13,110	1,197,751
1964 Finley Building	19,633	1,478,670
1964 Krug Hall	31,904	3,726,312
1964 Lecture Hall	7,998	739,204
1964 West Building	18,385	1,628,467
1967 Carty House	3,488	120,000
1967 Fenwick Library	140,600	14,131,312
1968 Development House	4,951	341,266
1968 Earle House	2,099	86,035
1968 Strong House	1,873	86,019
1968 Tallwood House	6,641	292,297
1971 Thompson Hall	71,957	6,187,221
1972 P.E. Building	61,440	4,343,005
1974 Biology Greenhouse	2,196	184,954
1974 Maintenance Building	12,002	672,175
1974 Student Union I	83,100	6,660,603
1975 Robinson Hall/Harris Theater	207,000	18,197,143
1976 Cooling/Heating Plant	10,900	2,952,105
1977 Student Housing I (Apartments)	109,200	6,306,482
1980 Alumni House	2,452	*
1980 Mathy House	5,400	*
1980 Arlington Metro Center	131,272	11,268,553
1980 Telecommunications House	3,203	160,941
1981 Student Housing IIA (Halls)	100,000	5,167,422
1982 Field house	117,600	6,482,376
1982 Information Booths	192	2,144
1982 King Hall	83,585	9,423,631
1982 Student Union II	90,875	9,452,347
1984 Trailers and Modules	46,052	4,563,828
1984 Student Housing (Patriot Village)	57,912	2,526,587
1985 Patriot Center	162,200	16,075,606
1986 4260 Chain Bridge Road (Entrepreneurship Center)	12,000	*
1986 Student Housing IIB (Commons)	101,380	8,713,593
1986 Student Housing IIB (University Park)	40,383	*
1987 Science and Technology I	95,068	9,188,073
1988 Humanities I (Performing Arts)	81,900	7,532,338
1989 Commerce Building I	14,738	*
1989 Humanities II (Mason Hall, College Hall, Fine Arts)	101,333	10,100,000
1989 Quincy Street Station (4th Floor)	9,368	*
1989 University Police Building	3,400	300,000
1989 Student Housing III (Presidents Park)	97,126	7,999,998
1990 Commerce Building II	13,572	*
1990 Center for Innovative Technology (4th Floor)	8,000	*
1990 Student Housing IV (Presidents Park)	101,955	8,833,250
1990 Concert Hall	59,400	9,030,600

*\*Rented through lease*

---



---

**CAMPUS BUILDINGS BY FIRST YEAR OF OCCUPANCY CONT.  
YEAR ENDING DECEMBER 1998**

---

<b>Year Building</b>	<b>Gross Square Footage</b>	<b>Gross Replacement Value</b>
1991 Science and Technology II	100,000	7,600,000
1995 Enterprise Hall	101,000	11,788,278
1996 Harvey Hall	860	*
1996 Enterprise Center	3,367	*
1996 George W. Johnson Center	310,000	32,888,424
1997 Warehouse/Facilities Administration	35,170	2,671,260
1997 Krasnow Institute	22,965	4,062,267
1998 Prince William I	99,136	15,588,000
1998 Prince William II	90,000	20,348,000
1998 Arlington I	211,983	19,052,000
1998 Aquatic and Fitness Center	66,901	11,120,000
<b>Total</b>	<b>3,397,725</b>	<b>\$321,873,289</b>

*\*Rented through lease*







SUMMARY OF PROPOSALS BY SPONSOR  
FISCAL YEARS 1997 AND 1998

	Number of Proposals			Amount of Proposals		
	FY 97	FY 98	% Change	FY 97	FY 98	% Change
<b>Federal Sources</b>						
Federal	223	248	11%	\$63,767,220	\$103,069,607	62%
Federal funds passed through state	12	21	75%	1,015,578	1,164,722	15%
Federal funds passed through industry	152	164	8%	13,805,871	13,801,649	0%
<b>Subtotal</b>	<b>387</b>	<b>433</b>	<b>12%</b>	<b>\$78,588,669</b>	<b>\$118,035,978</b>	<b>50%</b>
<b>Other Sources</b>						
Industry	34	29	-15%	1,087,091	993,289	-9%
State	22	28	27%	771,334	910,451	18%
CIT	17	26	53%	485,406	1,645,407	239%
Local Gov/Schools	33	26	-21%	6,012,875	1,290,417	-79%
Foundations						
GMU Foundation*	17	26	53%	1,121,278	4,635,333	313%
Other Foundations**	56	35	-38%	8,328,802	2,913,339	-65%
Associations/Other	63	74	17%	4,881,443	8,400,532	72%
Revenue	23	30	30%	818,176	703,711	-14%
<b>Subtotal</b>	<b>265</b>	<b>274</b>	<b>3%</b>	<b>\$23,506,405</b>	<b>\$21,492,479</b>	<b>9%</b>
<b>Grand Total</b>	<b>652</b>	<b>707</b>	<b>8%</b>	<b>\$102,095,074</b>	<b>\$139,528,457</b>	<b>37%</b>

\*Includes some grants to the GMU Foundation from other foundations

\*\*Foundation grants made directly to GMU

SUMMARY OF PROPOSALS BY ACTIVITY  
FISCAL YEARS 1997 AND 1998

	Number of Proposals		Amount of Proposals	
	FY 97	FY 98	FY 97	FY 98
Academic Affairs	17	32	\$1,056,646	\$393,699
Administration	3	4	235,706	410,065
College of Arts and Sciences	158	151	22,168,135	26,698,317
Institute for Computational Sciences & Informatics	33	37	8,184,379	11,629,754
Executive	2	2	6,500	22,214
Graduate School of Education	54	46	7,395,820	9,100,775
Institute for Bioscience, Bioinformatics & Biotechnology	5	24	2,386,206	21,329,610
Institute for Conflict Analysis & Resolution	19	12	7,573,037	2,188,873
Information Technology (UCIS)	3	3	506,670	16,465
Institute of the Arts	1	15	4,343	347,464
School of Information Technology & Engineering	165	164	30,533,094	43,528,179
Krasnow Institute	5	9	36,730	6,532,610
School of Law	2	7	8,590	1,024,432
New Century College	9	8	793,619	613,804
College of Nursing and Health Science	25	42	3,268,844	3,829,727
School of Management	17	7	1,876,392	452,411
The Institute of Public Policy	126	137	15,406,435	11,071,928
University Life	8	7	653,928	338,130
<b>Grand Total</b>	<b>652</b>	<b>707</b>	<b>\$102,095,074</b>	<b>\$139,528,457</b>

**SUMMARY OF OBLIGATIONS FOR NEW AWARDS AND INCREMENTS  
TO PRIOR AWARDS BY SPONSOR FISCAL YEARS 1997 AND 1998**

	Number of New Awards			Obligations for New Awards and Increments to Prior Awards		
	FY 97	FY 98	% Change	FY 97	FY 98	% Change
<b>Federal Sources</b>						
Federal	97	117	21%	\$11,413,970	15,588,308	37%
Federal funds passed through state	13	13	0%	743,646	996,231	34%
Federal funds passed through industry	98	125	28%	4,673,840	6,651,892	42%
<b>Subtotal</b>	<b>208</b>	<b>255</b>	<b>23%</b>	<b>\$16,831,456</b>	<b>\$23,236,431</b>	<b>38%</b>
<b>Other Sources</b>						
Industry	17	21	24%	318,659	370,077	16%
State	19	28	47%	581,677	883,993	52%
CIT	11	15	36%	354,894	621,801	75%
Local Gov/Schools	24	23	-4%	1,327,551	1,160,242	-13%
Foundations						
GMU Foundation*	16	24	50%	670,256	1,276,957	91%
GMU Foundations**	11	17	55%	545,858	874,304	60%
Associations/Other	48	55	15%	1,303,599	2,492,382	91%
Revenue	22	30	36%	810,408	988,331	22%
<b>Subtotal</b>	<b>168</b>	<b>213</b>	<b>27%</b>	<b>\$5,912,902</b>	<b>\$8,668,087</b>	<b>47%</b>
<b>Grand Total</b>	<b>376</b>	<b>468</b>	<b>24%</b>	<b>\$22,744,358</b>	<b>\$31,904,518</b>	<b>40%</b>

\*Includes some grants to the GMU Foundation from other foundations

\*\*Foundation grants made directly to GMU

**SUMMARY OF OBLIGATIONS FOR NEW AWARDS AND INCREMENTS  
TO PRIOR AWARDS BY ACTIVITY FISCAL YEARS 1997 AND 1998**

	Number of New Awards		Obligations for New Awards and Increments to Prior Awards	
	FY 97	FY 98	FY 97	FY 98
Academic Affairs	15	30	\$343,742	\$238,699
Administration	2	3	105,000	107,000
College of Arts and Sciences	84	105	3,781,490	5,713,093
Institute for Computational Sciences & Informatics	19	16	2,896,453	4,581,853
Executive	2	2	54,263	58,857
Graduate School of Education	27	32	2,683,840	2,421,495
Institute for Bioscience, Bioinformatics & Biotechnology	3	9	351,863	554,284
Institute for Conflict Analysis & Resolution	8	7	163,048	145,246
Information Technology (UCIS)	1	3	7,461	19,465
Institute of the Arts	0	9	0	126,347
School of Information Technology & Engineering	77	97	6,084,619	8,247,401
Krasnow Institute	2	7	24,000	914,371
School of Law	2	3	8,590	118,995
New Century College	4	4	268,844	312,354
College of Nursing and Health Science	21	31	1,160,257	1,681,223
School of Management	14	3	853,654	372,463
The Institute of Public Policy	90	100	3,815,376	6,026,870
University Life	5	7	141,858	264,502
<b>Grand Total</b>	<b>376</b>	<b>468</b>	<b>\$22,744,358</b>	<b>\$31,904,518</b>

SUMMARY OF EXPENDITURES BY SPONSOR  
FISCAL YEARS 1997 AND 1998

	Number of Accounts			Expenditures		
	FY 97	FY 98	% Change	FY 97	FY 98	% Change
<b>Federal Sources</b>						
Federal	265	263	-1%	\$11,974,144	\$13,554,245	13%
Federal funds passed through state	21	21	0%	757,730	820,411	8%
Federal funds passed through industry	172	157	-9%	4,737,099	4,353,784	-8%
<b>Subtotal</b>	<b>458</b>	<b>441</b>	<b>-4%</b>	<b>\$17,468,973</b>	<b>\$18,728,440</b>	<b>7%</b>
<b>Other Sources</b>						
Industry	27	25	-7%	338,183	232,451	-31%
State	34	43	26%	714,967	735,284	3%
CIT	23	25	9%	296,043	428,346	45%
Local Gov/Schools	35	40	14%	1,016,265	1,295,197	27%
Foundations						
GMU Foundation*	59	66	12%	3,812,404	2,512,770	-34%
Other Foundations**	15	26	73%	242,145	859,091	255%
Associations/Other	77	93	21%	1,076,607	1,957,928	82%
Revenue/Other	147	153	4%	2,361,916	1,752,759	-26%
<b>Subtotal</b>	<b>417</b>	<b>471</b>	<b>13%</b>	<b>\$9,858,530</b>	<b>\$9,773,826</b>	<b>-1%</b>
<b>Grand Total</b>	<b>875</b>	<b>912</b>	<b>4%</b>	<b>\$27,327,503</b>	<b>\$28,502,266</b>	<b>4%</b>

\*Includes some grants to the GMU Foundation from other foundations

\*\*Foundation grants made directly to GMU

SUMMARY OF EXPENDITURES BY ACTIVITY  
FISCAL YEARS 1997 AND 1998

	Number of Accounts		Expenditures	
	FY 97	FY 98	FY 97	FY 98
Academic Affairs	34	42	\$346,908	\$280,822
Administration	14	8	1,138,144	433,745
College of Arts and Sciences	208	224	3,783,173	4,846,079
Institute for Computational Sciences & Informatics	48	43	2,572,793	3,180,233
Executive	8	8	855,622	216,532
Graduate School of Education	75	76	3,007,691	2,900,785
Institute for Bioscience, Bioinformatics & Biotechnology	3	8	73,679	384,724
Institute for Conflict Analysis & Resolution	19	21	319,349	188,163
Information Technology (UCIS)	9	9	78,995	828,068
Institute of the Arts	1	6	-219	54,171
School of Information Technology & Engineering	238	217	6,902,844	7,136,672
Krasnow Institute	4	5	432,663	421,499
School of Law	5	6	290,625	311,373
New Century College	8	11	149,366	189,440
College of Nursing and Health Science	37	45	883,342	1,186,369
School of Management	17	21	676,001	681,209
The Institute of Public Policy	139	149	5,666,607	5,081,106
University Life	8	13	149,920	181,276
<b>Grand Total</b>	<b>875</b>	<b>912</b>	<b>\$27,327,503</b>	<b>\$28,502,266</b>



---

**UNIVERSITY LIBRARIES**

---

Resources and services of the GMU Libraries are housed in Fenwick Library and the George W. Johnson Center Library on the Fairfax Campus, the Arlington Campus Library, the Prince William Library, and School of Law Library at Arlington which is administered separately. All of the libraries support faculty and student research. GMU's library information system provides a public access catalog, on-line access to a variety of electronic resources (some with full text), the on-line catalog of the Washington Research Libraries Consortium (WRLC), automated circulation, electronic reserves, and library processing services. The library system can be used in the libraries, from campus locations on the network, or through the World Wide Web from off-campus locations. The libraries also provide a wealth of bibliographic databases through a Libraries-wide CD-ROM network as well as on individual computer workstations, in addition to maintaining a strong presence on the World Wide Web. GMU Libraries' web sites offer nearly all of our information systems components for use with web browsers, as well as a large amount of full-text database resources made available through the Virtual Library of Virginia (VIVA) initiative. The library liaison program to academic departments and programs supports a variety of cooperative and collaborative activities, including library resources development and development of instructional programs. The Libraries provide an inter-campus delivery service for students and faculty requesting materials held at another GMU campus library. Materials not held in the GMU libraries can be obtained by direct borrowing from WRLC institution libraries, interlibrary loan through the international Online Computer Library Center (OCLC) network, or through commercial document when required.

The University Libraries has 90 full-time staff, 11 graduate research assistants, and approximately 200 part-time student assistants and wage employees. Thirty-six percent of the full-time staff are administrative faculty (primarily librarians) with accredited graduate degrees in library and information sciences, and many possessing advanced discipline-based degrees as well.

---

**FENWICK LIBRARY**

---

Fenwick Library is the main research library in the university library system. Fenwick holds most of the Libraries' book collections in all disciplines, as well as current and bound journals, microforms, special collections and archives materials, government documents, and maps. Fenwick also offers access to a large number of electronic resources: networked and stand-alone CD-ROMS; the Libraries' online catalog; online bibliographic and full-text databases, including electronic journals, as well as Internet/Web accessible resources. Instruction and reference classes are available in information search strategies, sources, and information technology. Liaison librarians work collaboratively with academic departments and programs to develop print collections and electronic resources, as well as partnering to offer introductory, intermediate and advanced information competency group instructional sessions for students and faculty. Fenwick staff also assist individual students at all levels--graduate and undergraduate--as they become more sophisticated library and information technology users throughout their careers at GMU.

The Special Collections and Archives (SC&A) Department in Fenwick Library collects, organizes and preserves books, manuscripts, photographic images, and other items of historical or special interest to the GMU Community; scans and digitizes some especially noteworthy materials for research use (available via the Libraries' Web Pages); and provides "finding aids" for identification and use of special and archival materials.

Another significant resource of primary research materials held in Fenwick Library is the Government Documents and Maps collection. This collection includes both federal and Virginia state documents. Both sets of documents contain items from the administrative, legislative, and judicial branches of government, and constitute an invaluable source of primary source materials for students and faculty in political science, public policy, sociology, business and other fields. The Maps collection includes maps produced by the U.S. Geological Survey Service, as well as commercially published maps and atlases. The United States Government is one of the largest publishers (print and electronic) in the world. There are three main federal government publishing agencies: The United States Government Printing Office; the National Technical Information Service (NTIS); and the Defense Technical Information Center (DTIC). George Mason participates in the Federal Depository Library Program. As a selective depository library, Fenwick receives approximately 50% of the material available to program participants. Fenwick Library also selects approximately 30% of the materials available through the NTIS Selected Research in Microfiche program.

Additional services available at Fenwick Library include the Periodicals/Microforms collection, and the Circulation, Document Acquisition and Delivery (Interlibrary Loan), and Collection Management departments. Also, the Office of the University Librarian is located in Fenwick.

---

**JOHNSON CENTER LIBRARY**

---

The Johnson Center Library is part of the George W. Johnson Center, an integrated learning environment at GMU. The primary service point spaces of the Johnson Center Library have been conceived as a prototype of an electronic "gateway" library that supports information access and research activities through the Libraries' information technology systems and the Internet/WWW. Electronic access to scholarly information is complimented by a print reference collection, a media collections, and a growing circulating book collection comprised of core texts and readings supporting the interdisciplinary and multicultural emphasis in the university's undergraduate curriculum. The Johnson Center Library especially supports interdisciplinary programs such as New Century College through its collections and outreach programs. The library also holds designated discipline-based circulating collections (starting with education and music in academic year 1998/99.)

The Johnson Center Library emphasizes teaching the novice library user to use library and information resources more confidently in the Johnson Center Library itself, as well as in other libraries and through other channels, whether an area public library, a corporate setting, or from a desktop computer at home. The teaching of the Johnson Center Library provides a foundation for library users in critical thinking skills as they navigate more complex layers of information throughout their academic careers. The teaching/learning mission of the Johnson Center Library is also an indispensable part of the overall teaching/learning mission of the Johnson Center itself.

The Johnson Center Library is the center for media collections and services for the university library system. The Media collection includes materials in a variety of formats--videotapes, CD's, audiotapes, laserdiscs, and interactive videodiscs. The video collection of nearly 5,000 VHS videocassettes and over 300 laserdiscs include documentaries and educational titles from a wide range of disciplines as well as an extensive collection of feature films. The audio collection contains nearly 2,000 compact discs and more than 3,000 L.P. records, including large classical and jazz collections as well as popular music titles. The library also has over 500 audiocassettes, primarily unabridged "books on tape" editions of classic literature. The multi-media CD-ROM collection has more than 100 titles in the Arts, Humanities, and Sciences. Also available is "the Video Encyclopedia of the 20th Century", a unique collection of 40+ videodiscs which can be used to copy historic video clips to VHS tape for use in class projects, multimedia, etc. These materials are available for viewing and/or listening in the Library; some are available for external circulation to GMU students, faculty, and staff.

The Johnson Center Library also provides course reserve materials for students on the Fairfax Campus. The Libraries-wide electronic reserves service is also managed at this library. A collection of periodicals (foreign newspapers and general interest magazines and journals) and a leisure reading collection round out the Johnson Center Library's collections and services.

---

**ARLINGTON CAMPUS LIBRARIES: QUINCY STREET AND VIRGINIA SQUARE**

---

The Arlington Campus Library is a full-service research facility supporting the teaching and research needs of GMU faculty, staff, and students on this campus. The library's collection emphasizes international relations and commercial transactions, business, finance, trade, and related policy issues. The Arlington Campus Library also holds a core of reference materials, and is a depository of European Union documents. Library staff provide assistance and instruction for faculty, staff, and students in identifying and using various resources. A critical component of this Arlington Campus Library service is an emphasis on being a "virtual" library, with most of its resources and services available online. (Currently, the Arlington Campus Library is divided into two sites: Quincy Street and Virginia Square; however, it is anticipated that in March 1999 the two components will be merged into one location--in the old Law School Library at Virginia Square.)

---

**PRINCE WILLIAM CAMPUS LIBRARY**

---

This rapidly growing library supports faculty and students in the programs and courses offered at the Prince William Campus, including Education; Biotechnology; Computer Science; Health, Fitness, and Recreation Resources; and Administration of Justice. The library provides access to all George Mason University library information technology systems and electronic resources. The library emphasis is on instruction and assistance with the use of electronic resources and computing applications. In 1998, the library integrated into its collection the American Type Culture Collection, consisting primarily of scientific journals in bioscience and biomedicine. Finally, the Prince William Campus Library is fostering partnerships for provision of information services to the rapidly expanding corporate and technology presence in Prince William County.

---

**GEORGE MASON SCHOOL OF LAW LIBRARY**

---

George Mason School of Law Library combines a growing collection, with a high level of technology support, to ensure that our students and faculty have optimal access to all resources needed for serious scholarly study.

Located on three floors of the Law School building, the library houses 340 study carrels and table seats. Separate seminar and computer rooms inside the facility allow for group and computer activities.

The law library's collection consists of more than 359,000 volumes and volume equivalents. The collection is particularly strong in the areas of law and economics, business, economic theory and history, ethics, philosophy, tax, international law, patent law and banking.

As a participant in the Federal Government Depository Program, the law library regularly receives administrative decisions, executive agency reports, and numerous other government documents. The law library collections consist of American legal court reports, statutes, encyclopedias, digests, and indexes. It also receives more than 4,600 law and law-related periodicals and serials.

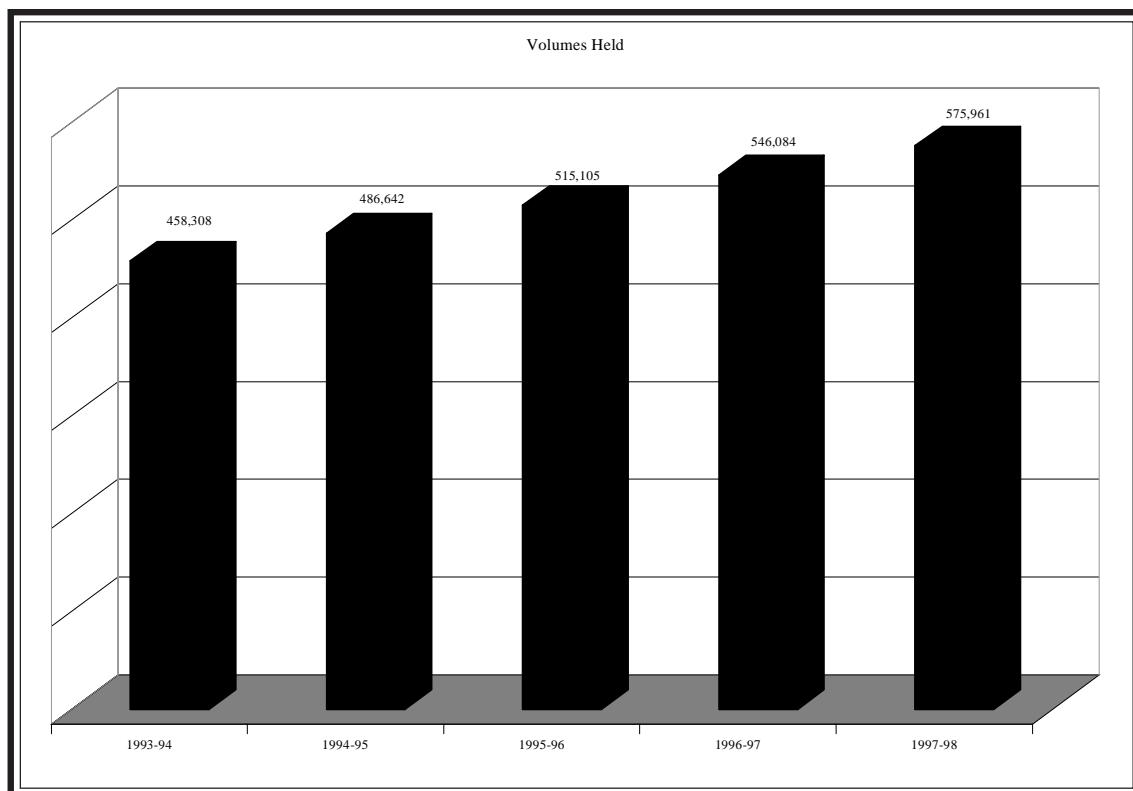
Automation is the key to managing and effectively using a collection of this size. The library shares an on-line catalog with the other libraries at George Mason University. Resources are expanded further through Aladin, the on-line catalog of the Washington Research Library Consortium. An interlibrary loan service allows George Mason law students to borrow materials from participating institutions. As members of the Virtual Library of Virginia, students and faculty have access to a growing number of on-line indexes and full-text databases that greatly enhance their ability to conduct legal and non-legal research.

There are two major, full-text computer-assisted legal research systems at George Mason: LEXIS and WESTLAW. They are both available to the law students and the law faculty of George Mason for educational research purposes. Although the systems differ, each includes the full text of judicial opinions, statutory materials, administrative regulations and decisions, and other legal and non-legal resource materials. The Law Library is supported by a staff of 13 full-time employees.

**LIBRARY STATISTICS**  
**FISCAL YEARS 1993-94 THROUGH 1997-98**

<b>GMU Libraries</b>	1993-94	1994-95	1995-96	1996-97	1997-98
Volumes Held	458,308	486,642	515,105	546,084	575,961
Physical Units of Microtext	1,009,005	1,099,584	1,193,700	1,279,676	1,360,150
Periodicals Received	5,279	5,732	6,314	6,925	7,191
U.S. Documents	486,911	492,946	500,503	506,153	512,925
Audiovisual Units	11,492	15,652	16,688	18,868	20,745
Circulations	268,718	310,470	338,041	387,520	300,202
<b>Interlibrary Loan</b>					
Borrowed	12,882	11,686	13,956	16,632	18,195
Loaned	12,091	13,473	17,255	21,146	20,411
Reference Questions	90,403	111,898	108,248	97,293	123,538
<b>Law Library</b>					
Volumes Held	176,976	186,276	194,908	204,922	211,330
Physical Units of Microtext	674,842	763,783	830,051	887,522	935,076
Periodicals Received	3,912	4,098	4,665	5,065	5,342
U.S. Documents	3,765	4,048	86,098	32,842	33,721
<b>Interlibrary Loan Borrowed</b>					
Borrowed	739	383	414	612	1,577
Loaned	1,128	1,403	945	438	1,223

*University Libraries: includes holding from Arlington, Fenwick, Johnson Center, Prince William libraries*









## TERMS AND DEFINITIONS

**APPLIED/APPLICATIONS/APPLICANTS**

The number of admission applications submitted for the reporting term. Individuals submitting multiple applications (e.g., applying for both an undergraduate and a graduate program, or more than one graduate program) are counted once for each application submitted; consequently, the count of graduate applied/applicants/applications may be greater than the number of individuals seeking admission to the university.

**APPROVED/APPROVALS**

The number of applications that resulted in an offer of admission into the applied-for program for the reporting term, including provisional admissions and other qualified admission statuses.

**CERTIFICATE**

A formal award certifying the satisfactory completion of a postsecondary program, but which does not qualify as a degree program.

**CLASS LEVEL/STUDENT LEVEL****UNDERGRADUATE DEGREE-SEEKING:**

- *Freshman*: A student who has fewer than 30 earned credit hours.
- *Sophomore*: A student who has 30-59 earned credit hours.
- *Junior*: A student who has 60-89 earned credit hours.
- *Senior*: A student who has at least 90 earned credit hours.

**GRADUATE DEGREE-SEEKING:**

- *Certificate*: A student whose primary program of study is one leading to a post-baccalaureate certificate.
- *Master's*: A student whose primary program of study is one leading to a master's degree.
- *Doctoral Pre-Candidate*: A student whose primary program of study is one leading to a doctoral degree who has not yet completed requirements for advancement to degree candidacy.
- *Doctoral Candidate*: A student whose primary program of study is one leading to a doctoral degree, who has met the university and departmental standards for advancement to degree candidacy. The standards normally include successful completion of all required course work and departmental candidacy examinations.

**PROFESSIONAL (LAW) DEGREE-SEEKING:**

- Law students are classified as Law Day (full-time program) or Law Evening (part-time program) and by year in program, which is 1, 2, or 3 for Law Day students and 1, 2, 3, or 4 for Law Evening student.

**NON-DEGREE-SEEKING:**

- Non-degree seeking students are classified only as undergraduate, graduate, or law, based on the level of the coursework being pursued.

**CLASSIFICATION OF INSTRUCTIONAL PROGRAMS (CIP) CODE**

Six-digit code that classifies instructional programs. The 1990 revision is the version currently in use.

**CONTRACT COURSE**

A course offered by contractual arrangement that may be paid for as a unit rather than via tuition charges to individual students.

**CREDIT HOUR**

A unit of measure of course work, independent study, or a related activity, that can be applied toward meeting the requirements of a degree, certificate, or other formal award.

**DEGREE-SEEKING STUDENT**

A student enrolled in courses for credit who is recognized by the institution as seeking a degree or formal award.

**ENROLLED/ENROLLEES**

Students registered for more than zero credit hours on the census date for the reporting term. New enrollees approved for admission to multiple programs are counted only once, under the program designated as their primary program of study.

**FIRST-TIME FRESHMAN**

- *Admissions*: An applicant who has never attended any postsecondary institution since graduation from high school, or whose only postsecondary enrollment was in the summer term immediately prior to a fall applied-for term.
- *Student enrollment*: New students who qualify as first-time freshman admissions, including those with sufficient Advanced Placement credit to be granted sophomore class standing.

**EXTENDED STUDIES**

The enrollment program that serves non-degree-seeking students.

## TERMS AND DEFINITIONS

**FULL-TIME EQUIVALENT (FTE) STUDENT**

A statistic derived from the student-credit hour productivity of the institution. In non-summer terms, the number of FTE students is obtained by dividing the total number of undergraduate, first professional (law), and graduate credit hours per term by 15, 15, and 12 respectively. The number of FTE students in summer, and annualized regular session (fall and spring semesters) is obtained by dividing the total number of undergraduate, first professional, and graduate credit hours per session by 30, 30, and 24 respectively. This definition should be distinguished from the definition of a full-time student.

**FULL-TIME STUDENT**

An undergraduate student enrolled for 12 or more credit hours in a term, a graduate student enrolled for 9 or more credit hours in a term, or a law student classified as a day student in a term.

**GRADUATE STUDENT**

A student enrolled in a master's, doctoral, or post-baccalaureate certificate program, not including law students. A non-degree-seeking student enrolled in graduate-level classes is also considered a graduate student.

**GUEST MATRICULANT**

A student taking course work at George Mason and applying the credit toward a degree at another institution.

**HEADCOUNT STUDENT**

The number of students enrolled for more than zero credit hours in courses offered for degree or certificate credit, including students who are not admitted to a degree program (extended studies). When student headcount is reported by academic division/department, the headcount is attributed to the department that administers the student's primary program of study.

**IN-STATE STUDENT**

A student whose official domicile is in the commonwealth of Virginia.

**LOWER DIVISION--BACCALAUREATE**

- *Courses:* courses that are part of a baccalaureate program, generally taken by freshmen and sophomores, with course numbers in the range 100-299.
- *Students:* students classified as freshmen or sophomores (those with fewer than 60 earned credit hours).

**NEW STUDENT**

A student whose enrollment in the term is the consequence of an application for admission for the term.

**NON-DEGREE-SEEKING GRADUATE STUDENT**

A student enrolled in graduate-level courses for credit who is not recognized as accepted into a degree or certificate program and who cannot be classified by student level.

**NON-DEGREE-SEEKING STUDENT**

A student enrolled in courses for credit who is not recognized as seeking a degree or certificate.

**NON-DEGREE-SEEKING UNDERGRADUATE STUDENT**

A student enrolled in undergraduate-level courses for credit who is not recognized as seeking a degree or certificate and who cannot be classified by student level.

**NON-RESIDENT ALIEN**

A person who is not a citizen or national of the United States and who is in this country on a visa or temporary basis and does not have the right to remain indefinitely. (Source: IPEDS)

**OUT-OF-STATE STUDENT**

A student whose official domicile is not the commonwealth of Virginia, and who therefore does not ordinarily qualify for in-state tuition rates.

**PART-TIME STUDENT**

An undergraduate enrolled for fewer than 12 credit hours in a term, a graduate student enrolled for fewer than 9 credit hours in a term, or a law student classified as an evening student in a term.

**POST-BACCALAUREATE CERTIFICATE**

An award that requires completion of an organized program of study beyond the level of a bachelor's degree, but which does not meet the requirements of academic degrees carrying the title of master.

**PROGRAM/ACADEMIC PROGRAM**

A combination of courses and related activities organized for the attainment of broad educational objectives.

---

**TERMS AND DEFINITIONS**

---

**RACE/ETHNICITY**

Categories used to describe groups to which individuals belong or with which they identify. The categories do not denote scientific definitions of anthropological origins. A person may be counted in only one group. In official reporting only U.S. citizens and permanent residents (resident aliens) are grouped by race/ethnicity. The groups used to categorize all students are:

- African American/Black, Non-Hispanic
- American Indian or Alaskan Native
- Asian or Pacific Islander
- Hispanic
- White, Non-Hispanic
- Non-Resident Alien

**RE-ADMITTED STUDENT**

A student returning to the institution after an unofficial absence to resume a program of study, who has not attended another postsecondary institution during the absence, and whose re-enrollment requires formal approval. Formal approval to re-enroll is normally required after an unofficial absence of two or more non-summer terms, or after being formally dismissed. In most reporting, re-admitted students are counted among returning/continuing students. Students who attend another post-secondary institution during an unofficial absence are required to submit a complete application for admission, and are counted among new students.

**RESIDENT ALIEN**

A person who is not a citizen or national of the United States, and who has been lawfully admitted for permanent residence (and who holds alien registration receipt cards Form I-551/155). (Source: IPEDS)

**RETURNING/CONTINUING STUDENT**

A student whose eligibility to enroll in the term does not require the submission of a formal application for admission.

**TRANSFER STUDENT**

A student entering the institution for the first time or re-entering to resume a prior level, and known to have previously attended a postsecondary institution at the same level. A student who was dual-enrolled at a college or university while still enrolled in high school is counted as a first-time freshman, not as a transfer student.

**UNCLASSIFIED STUDENT**

A student whose enrollment cannot be classified by student level.

**UPPER DIVISION--BACCALAUREATE**

*Courses:* courses that are part of a baccalaureate program, generally taken by juniors and seniors, with course numbers in the range 300-599.

*Students:* students classified as juniors or seniors (those with at least 60 earned credit hours).

---

**TERMS AND DEFINITIONS**

---

**DEFINITIONS FOR FACULTY AND STAFF****ADMINISTRATIVE/PROFESSIONAL FACULTY**

Administrative/professional faculty perform work directly related to the administration, management, and support of the educational and general activities of the university. Incumbents in administrative faculty positions exercise discretion and independent judgement and generally direct the work of others. Professional faculty require advanced learning and experience acquired by prolonged formal instruction and/or specialized work experience. This category is normally limited to librarians, counselors, coaches, and other professional positions.

**EMINENT SCHOLAR STIPENDS**

Monies paid from GMU Foundation endowment funds and the State Eminent Scholars Matching Program to supplement the salaries of eminent full-time scholars such as the Robinson Professors.

**FULL-TIME FACULTY**

Full-time, instructional and research personnel holding the traditional ranks of professor, associate professor, assistant professor, and instructor. Designated as instructional or research faculty.

**GRADUATE ASSISTANTS**

Enrolled graduate students holding the positions of graduate teaching assistant or graduate research assistant. Traditionally, these positions are 20 hours per week.

**INSTRUCTIONAL FACULTY**

Faculty whose primary funding is from an Educational and General ledger one instructional account and whose primary purpose is instruction. Most salary comparisons such as AAUP are based only on full-time, instructional faculty.

**PART-TIME FACULTY**

Part-time or adjunct faculty hired for instruction with semester or year-long contracts.

**RESEARCH FACULTY**

Faculty whose primary funding is from a research account and whose primary purpose is research.

**RESTRICTED/FIXED TERM FACULTY**

Faculty not eligible for tenure, hired under contracts of fixed terms.

**PROBATIONARY/TENURE TRACK/TENURE STREAM FACULTY**

Faculty eligible for, but not yet awarded tenure.

**TENURED FACULTY**

Faculty awarded appointments without a fixed term, with periodic review.

**TERMINAL DEGREE**

The highest earned degree in a discipline. In most cases, this is the doctorate (Ph.D./Ed.D.). In the fine arts, the M.F.A. or master's degree is considered the highest, appropriate degree. The J.D. in law is considered a professional degree.