

# ACADEMIC PROGRAMS AND DEGREES CONFERRED

Degrees and certificates awarded by George Mason University are authorized by the State Council of Higher Education for Virginia and accredited by the Commission on Colleges of the Southern Association of Colleges and Schools.\* The university confers degrees at the Baccalaureate, Master's, Doctoral, and First Professional levels. The university offers post-baccalaureate and graduate certificates. Some post-baccalaureate certificates may be awarded concurrently with the baccalaureate degree.

During the 2012-2013 academic year, Mason granted 8,959 degrees and certificates. Of the degrees awarded in 2012-2013, 55% were bachelor's, 33% master's, 3% doctoral, 3% first professional, and 6% were certificate awards. Among certificates, 61% (4% of total degrees) required 18 or more credits for completion (meeting IPEDS and SCHEV reporting standards) and 39% (2% of total degrees) required less than 18 credits (Table 5.1). Of the degrees granted, 31.2% were awarded by the College of Humanities and Social Sciences, 16.2% by the College of Education and Human Development, 12.7% by the School of Management, and 12.4% by the Volgenau School of Engineering (Table 5.2).

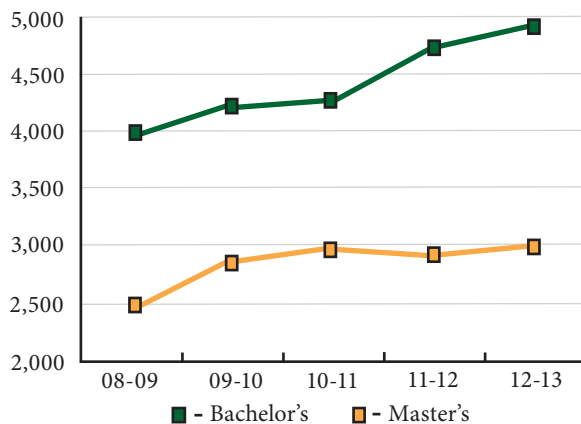
The university offers a total of 200 programs of study. This includes 76 undergraduate programs, 85 master's programs, 38 doctoral programs, and one first professional degree. For a detailed listing, please see Table 5.6.

**TABLE 5.1 Trends in Degrees and Awards Conferred**

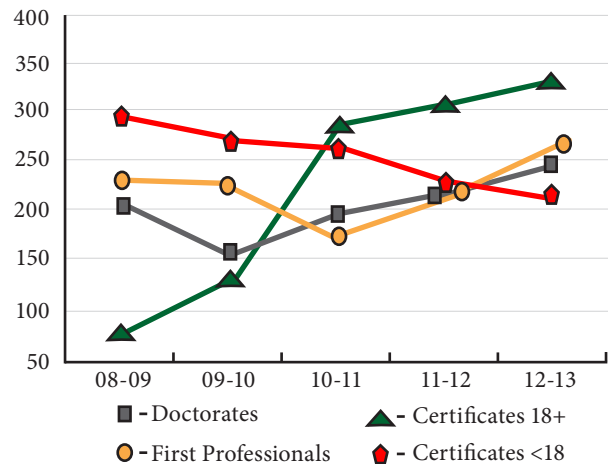
	2008-09	2009-10	2010-2011	2011-2012	2012-2013	Changes in Awards from '08-'09 to '12-'13	
						Number	Percentage
Bachelor's	4,009	4,202	4,255	4,718	4,920	911	22.7
Master's	2,499	2,856	2,941	2,899	2,980	481	19.2
Doctorate*	202	158	194	212	249	47	23.3
First Professional	228	224	168	216	261	33	14.5
Certificates 18+	89	145	304	326	335	261	352.7
Certificates <18	277	258	241	215	214	-78	-26.7
<b>Total</b>	<b>7,304</b>	<b>7,843</b>	<b>8,103</b>	<b>8,586</b>	<b>8,959</b>	<b>1,655</b>	<b>22.7</b>

\*Includes Professional Doctorate degrees.

**Fig. 5.1 Degrees Conferred Trends: Bachelor's and Master's**



**Fig. 5.2 Degrees and Awards Conferred Trends: Doctorates, Professional, and Certificates**



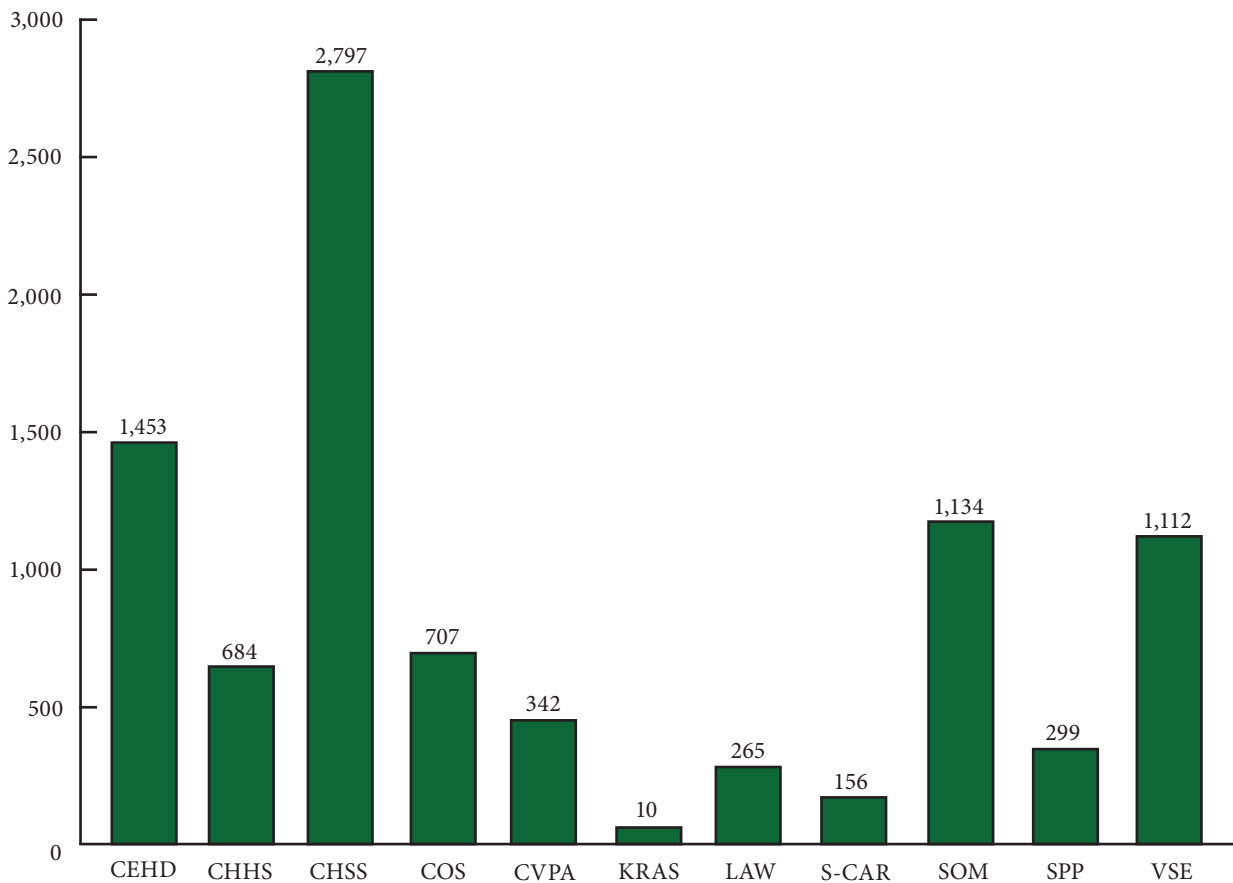
\*George Mason University is accredited by the Commission on Colleges of the Southern Association of Colleges and Schools to award bachelor's, master's, and doctoral degrees. Contact the Commission on Colleges at 1866 Southern Lane, Decatur, Georgia 30033-4097 or call 404-679-4500 for questions about the accreditation of George Mason University. The university is also a member of the Council of Graduate Schools in the United States. Some programs are accredited by specialty accrediting bodies.

**TABLE 5.2 Degrees and Certificates Conferred by Academic Division, Academic Year 2012–13**

	Bachelor's	Master's	Doctorate*	First Professional	Certificate +18	Certificate <18	Total	% of Univ. Total
CEHD	229	897	47	0	209	71	1,453	16.2
CHHS	391	260	16	0	10	7	684	7.6
CHSS	2,169	517	70	0	22	19	2,797	31.2
COS	406	163	54	0	74	10	707	7.9
CVPA	249	79	2	0	6	6	342	3.8
KRAS	0	0	4	0	0	6	10	0.1
LAW	0	4	0	261	0	0	265	3.0
S-CAR	63	70	9	0	0	14	156	1.7
SOM	884	243	0	0	7	0	1,134	12.7
SPP	0	272	20	0	1	6	299	3.3
VSE	529	475	27	0	6	75	1,112	12.4
<b>University Total</b>	<b>4,920</b>	<b>2,980</b>	<b>249</b>	<b>261</b>	<b>335</b>	<b>214</b>	<b>8,959</b>	<b>100%</b>

Note: Percentages may not add up to total due to rounding  
 \*Includes a Professional Doctorate degree.

**Fig. 5.3 Degrees and Certificates Conferred by Academic Unit**



*List of Abbreviations:*

CEHD: College of Education and Human Development  
 CHHS: College of Health and Human Services  
 CHSS: College of Humanities and Social Sciences  
 COS: College of Science  
 CVPA: College of Visual and Performing Arts  
 KRAS: Krasnow Institute for Advanced Study

LAW: School of Law  
 S-CAR: School for Conflict Analysis and Resolution  
 SOM: School of Management  
 SPP: School of Public Policy  
 VSE: Volgenau School of Engineering

TABLE 5.3 Degrees and Certificates Awarded by Gender and Ethnicity, Academic Year 2012–13

		Gender			Ethnicity									
		Total	Female	Male	Not Re-ported	Amer. Ind./ AK Native	Asian	Black/ Afr. Amer.	His-panic	White	Non-Res. Alien	Pac. Island	Two or More	Not Re-ported
CEHD	Bachelor's	229	126	103	0	0	16	13	14	155	3	2	9	17
	Master's	897	744	152	1	2	42	59	51	559	13	0	14	157
	Doctoral	47	42	5	0	0	4	4	1	32	2	0	0	4
	Certificates 18+	209	180	29	0	0	6	8	9	141	0	0	6	39
	Certificates <18	71	66	5	0	0	2	5	2	53	1	0	1	7
	<b>Total</b>	<b>1,453</b>	<b>1,158</b>	<b>294</b>	<b>1</b>	<b>2</b>	<b>70</b>	<b>89</b>	<b>77</b>	<b>940</b>	<b>19</b>	<b>2</b>	<b>30</b>	<b>224</b>
CHHS	Bachelor's	391	349	42	0	0	56	53	38	180	10	3	16	35
	Master's	260	235	25	0	0	26	52	14	125	7	0	3	33
	Doctoral	16	16	0	0	0	3	1	0	10	0	0	0	2
	Certificates 18+	10	5	5	0	0	1	3	0	5	0	0	0	1
	Certificates <18	7	6	1	0	0	1	1	1	0	4	0	0	0
	<b>Total</b>	<b>684</b>	<b>611</b>	<b>73</b>	<b>0</b>	<b>0</b>	<b>87</b>	<b>110</b>	<b>53</b>	<b>320</b>	<b>21</b>	<b>3</b>	<b>19</b>	<b>71</b>
CHSS	Bachelor's	2,169	1,379	785	5	6	201	201	271	1,133	66	2	108	181
	Master's	517	298	219	0	0	28	27	35	326	14	1	14	72
	Doctoral	70	40	30	0	0	4	3	1	46	11	0	0	5
	Certificates 18+	22	15	7	0	0	1	0	1	14	0	0	0	6
	Certificates <18	19	14	5	0	0	1	1	2	11	1	0	1	2
	<b>Total</b>	<b>2,797</b>	<b>1,746</b>	<b>1,046</b>	<b>5</b>	<b>6</b>	<b>235</b>	<b>232</b>	<b>310</b>	<b>1,530</b>	<b>92</b>	<b>3</b>	<b>123</b>	<b>266</b>
COS	Bachelor's	406	229	177	0	2	104	26	31	163	14	1	15	50
	Master's	163	76	86	1	0	17	4	8	86	16	0	4	28
	Doctoral	54	23	31	0	1	6	1	2	16	19	0	0	9
	Certificates 18+	74	53	21	0	1	23	19	6	21	0	0	2	2
	Certificates <18	10	5	5	0	0	1	1	0	5	0	0	1	2
	<b>Total</b>	<b>707</b>	<b>386</b>	<b>320</b>	<b>1</b>	<b>4</b>	<b>151</b>	<b>51</b>	<b>47</b>	<b>291</b>	<b>49</b>	<b>1</b>	<b>22</b>	<b>91</b>
CVPA	Bachelor's	249	159	89	1	0	33	17	28	128	5	0	20	18
	Master's	79	56	22	1	0	3	6	6	41	7	0	3	13
	Doctoral	2	1	1	0	0	1	0	0	0	0	0	0	1
	Certificates 18+	6	4	2	0	0	0	0	0	5	0	0	1	0
	Certificates <18	6	5	1	0	0	0	0	1	5	0	0	0	0
	<b>Total</b>	<b>342</b>	<b>225</b>	<b>115</b>	<b>2</b>	<b>0</b>	<b>37</b>	<b>23</b>	<b>35</b>	<b>179</b>	<b>12</b>	<b>0</b>	<b>24</b>	<b>32</b>
KRAS	Doctoral	4	1	3	0	0	0	0	0	2	1	0	0	1
	Certificates <18	6	3	3	0	0	2	0	0	1	1	0	1	1
	<b>Total</b>	<b>10</b>	<b>4</b>	<b>6</b>	<b>0</b>	<b>0</b>	<b>2</b>	<b>0</b>	<b>0</b>	<b>3</b>	<b>2</b>	<b>0</b>	<b>1</b>	<b>2</b>
LAW	First Professional	261	102	159	0	2	17	1	5	205	7	0	3	21
	Masters	4	1	2	1	1	1	0	0	1	0	0	0	1
	<b>Total</b>	<b>265</b>	<b>103</b>	<b>161</b>	<b>1</b>	<b>3</b>	<b>18</b>	<b>1</b>	<b>5</b>	<b>206</b>	<b>7</b>	<b>0</b>	<b>3</b>	<b>22</b>

\*For more information about degree awards by program, go to our website: [irr.gmu.edu](http://irr.gmu.edu).

(Continues on next page)

TABLE 5.3 Degrees and Certificates Awarded by Gender and Ethnicity, Academic Year 2012–13 (Cont'd)

		Total	Gender			Ethnicity								
			Female	Male	Not Re-ported	Amer. Ind./ AK Native	Asian	Black/ Afr. Amer.	His-panic	White	Non-Res. Alien	Pac. Island	Two or More	Not Re-ported
S-CAR	Bachelor's	63	33	30	0	1	3	6	2	41	0	0	3	7
	Master's	70	39	31	0	1	4	5	5	30	2	0	1	22
	Doctoral	9	4	5	0	0	1	0	0	6	2	0	0	0
	Certificates <18	14	5	9	0	0	0	3	1	8	0	0	0	2
	<b>Total</b>	<b>156</b>	<b>81</b>	<b>75</b>	<b>0</b>	<b>2</b>	<b>8</b>	<b>14</b>	<b>8</b>	<b>85</b>	<b>4</b>	<b>0</b>	<b>4</b>	<b>31</b>
SOM	Bachelor's	884	424	460	0	3	250	63	115	287	51	6	42	67
	Master's	243	71	172	0	0	34	9	12	110	24	1	3	50
	Certificates 18+	7	4	3	0	0	2	0	2	2	0	0	0	1
	<b>Total</b>	<b>1,134</b>	<b>499</b>	<b>635</b>	<b>0</b>	<b>3</b>	<b>286</b>	<b>72</b>	<b>129</b>	<b>399</b>	<b>75</b>	<b>7</b>	<b>45</b>	<b>118</b>
SPP	Master's	272	145	127	0	0	14	20	24	135	15	0	6	58
	Doctoral	20	7	13	0	0	1	1	0	8	8	0	0	2
	Certificates 18+	1	1	0	0	0	0	0	0	0	0	0	0	1
	Certificates <18	6	1	5	0	0	0	0	1	3	0	0	1	1
	<b>Total</b>	<b>299</b>	<b>154</b>	<b>145</b>	<b>0</b>	<b>0</b>	<b>15</b>	<b>21</b>	<b>25</b>	<b>146</b>	<b>23</b>	<b>0</b>	<b>7</b>	<b>62</b>
VSE	Bachelor's	529	90	437	2	2	162	28	39	207	26	2	21	42
	Master's	475	124	350	1	0	56	28	21	144	154	2	4	66
	Doctoral	27	8	19	0	0	3	0	1	7	11	0	0	5
	Certificate 18+s	6	3	3	0	0	1	0	0	4	0	0	0	1
	Certificates <18	75	19	55	1	0	8	8	4	26	18	0	1	10
	<b>Total</b>	<b>1,112</b>	<b>244</b>	<b>864</b>	<b>4</b>	<b>2</b>	<b>230</b>	<b>64</b>	<b>65</b>	<b>388</b>	<b>209</b>	<b>4</b>	<b>26</b>	<b>124</b>
UNIVERSITY TOTAL	8,959	5,211	3,734	14	22	1,139	677	754	4,487	513	20	304	1,043	

\*For more information about degree awards by program, go to our website: [irr.gmu.edu](http://irr.gmu.edu).

## SCIENCE, TECHNOLOGY, ENGINEERING, MATHEMATICS AND HEALTH SCIENCES DEGREES

The tables below provide information on Mason's degrees and awards in Science, Technology, Engineering, and Mathematics (STEM), (Table 5.4) and Health Science (H), (Table 5.5) areas. STEM and Health Science degree programs are defined by SCHEV using the approved classification of instructional program (CIP) codes (<http://research.schev.edu/policytools/stemlist.asp>) plus approved institution-specific STEM CIP codes.

Over the past five years, degrees and awards in STEM degree programs grew by 39%. In 2012-2013, 22% of Mason's total awards were in STEM programs. More specifically: 20% of all Bachelor's; 32% of all Certificates; 23% of all Master's; and 35% of all Doctorate degrees were awarded in STEM fields (Table 5.4).

During this same five-year period, awards in Health Science fields grew by 19%. In 2012-2013, 6% of Mason's total awards were in Health Science fields. By degree level, Mason's Health Science awards were as follows: 7%

**TABLE 5.4 Science, Technology, Engineering and Mathematics (STEM) Awards by Level**

	2008-2009	2009-2010	2010-2011	2011-2012	2012-2013	5 Year % Change
<b>Bachelor's</b>						
In-State	627	690	691	859	893	
Out-of-State	41	72	68	81	92	
<b>Bachelor's Total</b>	<b>668</b>	<b>762</b>	<b>759</b>	<b>940</b>	<b>985</b>	
<b>% Change</b>		<b>14.1%</b>	<b>-0.4%</b>	<b>23.8%</b>	<b>4.8%</b>	<b>47.5%</b>
<b>Master's</b>						
In-State	324	359	327	394	465	
Out-of-State	201	223	201	213	217	
<b>Master's Total</b>	<b>525</b>	<b>582</b>	<b>528</b>	<b>607</b>	<b>682</b>	
<b>% Change</b>		<b>10.9%</b>	<b>-9.3%</b>	<b>15.0%</b>	<b>12.4%</b>	<b>29.9%</b>
<b>Doctorate</b>						
In-State	32	28	46	52	41	
Out-of-State	49	30	44	50	45	
<b>Doctorate Total</b>	<b>81</b>	<b>58</b>	<b>90</b>	<b>102</b>	<b>86</b>	
<b>% Change</b>		<b>-28.4%</b>	<b>55.2%</b>	<b>13.3%</b>	<b>-15.7%</b>	<b>6.2%</b>
<b>Certificates 18+</b>						
In-State	5	15	54	53	41	
Out-of-State	1	4	31	41	43	
<b>Certificate 18+ Total</b>	<b>6</b>	<b>19</b>	<b>85</b>	<b>94</b>	<b>84</b>	
<b>% Change</b>		<b>216.7%</b>	<b>347.4%</b>	<b>10.6%</b>	<b>-10.6%</b>	<b>1,300.0%</b>
<b>Certificates &lt;18</b>						
In-State	67	60	76	81	71	
Out-of-State	43	64	39	39	21	
<b>Certificates &lt;18 Total</b>	<b>110</b>	<b>124</b>	<b>115</b>	<b>120</b>	<b>92</b>	
<b>% Change</b>		<b>12.7%</b>	<b>-7.3%</b>	<b>4.3%</b>	<b>-23.3%</b>	<b>-16.4%</b>
<b>Total STEM Awards</b>	<b>1,390</b>	<b>1,545</b>	<b>1,577</b>	<b>1,863</b>	<b>1,929</b>	
<b>% Change</b>		<b>11.2%</b>	<b>2.1%</b>	<b>18.1%</b>	<b>3.5%</b>	<b>38.8%</b>

Notes: Historical data has been mapped to reflect the current classification of instruction (CIP) code designation for these programs. Students are counted in STEM if their primary program or secondary program is in STEM.

**TABLE 5.5 Health Sciences Awards by Level**

	2008-2009	2009-2010	2010-2011	2011-2012	2012-2013	5 Year % Change
<b>Bachelor's</b>						
In-State	311	266	278	309	326	
Out-of-State	37	36	37	48	38	
<b>Bachelor's Total</b>	<b>348</b>	<b>302</b>	<b>315</b>	<b>357</b>	<b>364</b>	
<b>% Change</b>		<b>-13.2%</b>	<b>4.3%</b>	<b>13.3%</b>	<b>2.0%</b>	<b>4.6%</b>
<b>Master's</b>						
In-State	92	121	161	204	146	
Out-of-State	13	22	24	35	28	
<b>Master's Total</b>	<b>105</b>	<b>143</b>	<b>185</b>	<b>239</b>	<b>174</b>	
<b>% Change</b>		<b>36.2%</b>	<b>29.4%</b>	<b>29.2%</b>	<b>-27.2%</b>	<b>65.7%</b>
<b>Doctorate</b>						
In-State	8	2	4	16	16	
Out-of-State	0	0	0	1	0	
<b>Doctorate Total</b>	<b>8</b>	<b>2</b>	<b>4</b>	<b>17</b>	<b>16</b>	
<b>% Change</b>		<b>-75.0%</b>	<b>100.0%</b>	<b>325.0%</b>	<b>-5.9%</b>	<b>100.0%</b>
<b>Certificates +18</b>						
In-State	8	9	7	16	5	
Out-of-State	1	2	2	3	1	
<b>Certificate Total</b>	<b>9</b>	<b>11</b>	<b>9</b>	<b>19</b>	<b>6</b>	
<b>% Change</b>		<b>22.2%</b>	<b>-18.2%</b>	<b>111.1%</b>	<b>-68.4%</b>	<b>-33.3%</b>
<b>Certificates &lt;18</b>						
In-State	9	11	10	9	1	
Out-of-State	0	2	2	4	5	
<b>Certificates &lt;18 Total</b>	<b>9</b>	<b>13</b>	<b>12</b>	<b>13</b>	<b>6</b>	
<b>% Change</b>		<b>116.7%</b>	<b>-7.7%</b>	<b>8.3%</b>	<b>-53.8%</b>	<b>0.0%</b>
<b>Total Health Science Awards</b>	<b>479</b>	<b>471</b>	<b>525</b>	<b>645</b>	<b>566</b>	
<b>% Change</b>		<b>-1.1%</b>	<b>11.5%</b>	<b>22.9%</b>	<b>-12.2%</b>	<b>18.9%</b>

Note: Historical data has been mapped to reflect the current classification of instruction (CIP) code designation for these programs. Students are counted in Health Sciences if their primary program or secondary program is in Health Sciences.

**TABLE 5.6 Actively Recruited Degree Programs by Level and College, with Classification of Instructional Program (CIP) Codes and Years Initiated, Academic Year 2013–14**

Degrees	CIP Code	Year Initiated
<b>BACHELOR'S DEGREES:</b>		
<b>College of Education and Human Development</b>		
Athletic Training, B.S.	51.0913	2002
Health, Fitness, and Recreation Resources, B.S.	13.1307	1994
Physical Education, B.S.Ed.	13.1314	1972
Tourism and Event Management, B.S.	52.0903	2008
<b>College of Health and Human Services</b>		
Community Health, B.S.	51.2208	2008
Health Administration, B.S.	51.9999	1998
Nursing, B.S.N.	51.3801	1974
Social Work, B.S.W.	44.0701	1971
<b>College of Humanities and Social Sciences</b>		
Anthropology, B.A.	45.0201	1981
Art History, B.A.	50.0703	2010
Communication, B.A.	23.1304	1980
Creative Writing, B.F.A.	23.1302	2013
Criminology, Law, and Society, B.A.	43.0107	2013
Criminology, Law, and Society, B.S.	43.0107	1994
Economics, B.A.	45.0601	1969
Economics, B.S.	45.0601	1969
English, B.A.	23.0101	1966
Environmental and Sustainability Studies, B.A.	30.3301	2010
Foreign Languages, B.A.	16.0101	1990
Global Affairs, B.A.	45.0901	2003
Government and International Politics, B.A.	45.1099	1998
History, B.A.	54.0101	1966
Individualized Study, B.I.S.	24.0101	1975
Integrative Studies, B.A.	24.0199	1995
Integrative Studies, B.S.	24.0199	1995
Latin American Studies, B.A.	05.0107	2005
Neuroscience, B.S.	26.1501	2007
Philosophy, B.A.	38.0101	1971
Psychology, B.A.	42.0101	1969
Psychology, B.S.	42.0101	1969
Public Administration, B.S.	44.0401	1973
Religious Studies, B.A.	38.0201	2001
Russian and Eurasian Studies, B.A.	05.0110	2009
Sociology, B.A.	45.1101	1970
<b>College of Science</b>		
Astronomy, B.S.	40.0201	2002
Biology, B.A.	26.0101	1966
Biology, B.S.	26.0101	1966
Chemistry, B.A.	40.0501	1967
Chemistry, B.S.	40.0501	1967
Earth Science, B.S.	40.0601	2002
Environmental Science, B.S.	03.0104	2010
Forensic Science, B.S.	43.0106	2011
Geography, B.A.	45.0701	1975
Geography, B.S.	45.0701	1998
Geology, B.A.	40.0601	1989
Global and Environmental Change, B.S.	40.9999	2007
Mathematics, B.A.	27.0101	1967

(Continues on next page)

**TABLE 5.6 Actively Recruited Degree Programs by Level and College, with Classification of Instructional Program (CIP) Codes and Years Initiated, Academic Year 2013–14 (Cont'd)**

Degrees	CIP Code	Year Initiated
<b>College of Science (Cont'd)</b>		
Mathematics, B.S.	27.0101	1967
Medical Technology, B.S.	51.1005	1975
Physics, B.S.	40.0801	1968
<b>College of Visual and Performing Arts</b>		
Art and Visual Technology, B.A.	50.0101	2001
Art and Visual Technology, B.F.A.	50.0101	2001
Computer Game Design, B.F.A.	10.0304	2009
Dance, B.A.	50.0301	1986
Dance, B.F.A.	50.0301	1988
Film and Video Studies, B.A.	50.0602	2007
Music, B.A.	50.0903	1972
Music, B.M.	50.0903	1972
Theater, B.A.	50.0501	1975
Theater, B.F.A.	50.0501	1975
<b>School for Conflict Analysis and Resolution</b>		
Conflict Analysis and Resolution, B.A.	30.0501	2004
Conflict Analysis and Resolution, B.S.	30.0501	2004
<b>School of Management</b>		
Accounting, B.S.	52.0301	1980
Finance, B.S.	52.1399	1980
Information Systems & Operations Management, B.S.	52.0801	1980
Management, B.S.	52.0201	1980
Marketing, B.S.	52.1401	1980
<b>University - Provost</b>		
Applied Sciences, B.A.S.	24.0102	2010
<b>Volgenau School of Engineering</b>		
Applied Computer Science, B.S.	11.0701	2006
Applied Information Technology, B.S.	11.0103	2002
Bioengineering, B.S.	14.0501	2010
Civil and Infrastructure Engineering, B.S.	14.0801	2000
Computer Engineering, B.S.	14.0901	1998
Computer Science, B.S.	11.0101	1980
Electrical Engineering, B.S.	14.1001	1981
System Engineering, B.S.	14.2701	1987
<b>MASTER'S DEGREES:</b>		
<b>College of Education and Human Development</b>		
Counseling and Development, M.Ed.	13.1101	1972
Curriculum and Instruction, M.Ed.	13.0301	1989
Education Leadership, M.Ed.	13.0401	1972
Educational Psychology, M.S.	42.2806	2008
Exercise, Fitness, and Health Promotion, M.S.	13.1314	1982
Special Education, M.Ed.	13.1001	1975
Sport and Recreation Studies, M.S.	31.0504	2010
<b>College of Health and Human Services</b>		
Global Health, M.S.	51.2210	2008
Health and Medical Policy, M.S.	44.0503	2010
Health Informatics, M.S.	51.2706	2012

(Continues on next page)



**TABLE 5.6 Actively Recruited Degree Programs by Level and College, with Classification of Instructional Program (CIP) Codes and Years Initiated, Academic Year 2013–14 (Cont'd)**

Degrees	CIP Code	Year Initiated
<b>College of Health and Human Services (Cont'd)</b>		
Health Systems Management, M.H.A.	51.0701	1999
Nursing, M.S.N	51.3801	1979
Nutrition, M.S.	51.3102	2013
Public Health, M.P.H.	51.2201	2009
Senior Housing Administration, M.S.	51.0799	2009
Social Work, M.S.W.	44.0701	2002
<b>College of Humanities and Social Sciences</b>		
Anthropology, M.A.	45.0201	2007
Art History, MA	50.0703	2006
Biodefense, M.S.	26.0599	2003
Communication, M.A.	09.0101	2001
Creative Writing, M.F.A.	23.1302	1980
Criminology, Law, and Society, M.A.	43.0103	2005
Economics, M.A.	45.0601	1973
English, M.A.	23.1404	1973
Foreign Languages, M.A.	16.0101	1981
Global Affairs, M.A.	30.2001	2009
History, M.A.	54.0101	1971
History of Decorative Arts, M.A.	50.0799	2011
Interdisciplinary Studies, M.A.I.S.	30.9999	1982
Middle East and Islamic Studies, M.A.	05.0108	2013
Philosophy, M.A.	38.0101	2004
Political Science, M.A.	45.1001	2003
Psychology, M.A.	42.0101	1972
Public Administration, M.P.A.	44.0401	1976
Sociology, M.A.	45.1101	1982
<b>College of Science</b>		
Applied and Engineering Physics, M.S.	40.0801	1982
Bioinformatics and Computational Biology, M.S.	26.1101	2002
Bioinformatics Management, M.S	26.1103	2007
Biology, M.S.	26.0101	1970
Biomedical Sciences, M.S.	26.0102	2011
Chemistry, M.S.	40.0501	1988
Computational Science, M.S.	30.0801	2002
Earth Systems Science, M.S.	40.0601	2002
Environmental Science and Policy, M.S.	03.0104	2002
Forensic Science, M.S.	43.0106	2010
Geographic and Cartographic Sciences, M.S.	45.0701	1979
Geoinformatics and Geospatial Intelligence, M.S.	45.0702	2010
Mathematics, M.S.	27.0101	1970
<b>College of Visual and Performing Arts</b>		
Art and Visual Technology, M.F.A.	50.0101	2001
Arts Education, M.A.T.	13.1302	2005
Arts Management, M.A.	50.1002	2004
Dance, M.F.A.	50.0301	2002
Graphic Design, M.A.	50.0409	2010
Music, M.M.	50.0901	2002
<b>School for Conflict Analysis and Resolution</b>		
Conflict Analysis and Resolution, M.S.	30.0501	1982

(Continues on next page)

**TABLE 5.6 Actively Recruited Degree Programs by Level and College, with Classification of Instructional Program (CIP) Codes and Years Initiated, Academic Year 2013–14 (Cont'd)**

<b>Degrees</b>	<b>CIP Code</b>	<b>Year Initiated</b>
<b>School of Law</b>		
Intellectual Property Law, LL.M.	22.0299	2002
Law and Economics, LL.M	22.9999	2002
<b>School of Management</b>		
Accounting, M.S.	52.0301	1985
Business Administration, M.B.A.	52.0201	1972
Management of Secure Information Systems, M.S.	43.0303	2011
Real Estate Development, M.S.	52.1501	2009
Technology Management, M.S.	52.0211	2000
<b>School of Public Policy</b>		
Executive Masters in Public Policy, E.M.P.P.	44.0599	2009
Health and Medical Policy, M.S.	44.0503	2010
International Commerce and Policy, M.A.	45.0901	1992
Law, J.D./M.P.P.*	22.0101	2006
Organization Development and Knowledge Management, M.S.	52.1003	2009
Peace Operations, M.S.	30.2801	2011
Public Policy, M.P.P.	44.0501	2002
Telecommunications Policy, M.A.	09.0702	2009
Transportation Policy, Operations and Logistics, M.A.	44.9999	2002
<b>Volgenau School of Engineering</b>		
Applied Information Technology, M.S.	11.0103	2008
Civil and Infrastructure Engineering, M.S.	14.0801	2000
Computer Engineering, M.S.	14.0901	1999
Computer Forensics, M.S.	43.0116	2009
Computer Science, M.S.	11.0101	1982
Electrical Engineering, M.S.	14.1001	1982
Geotechnical, Construction, and Structural Engineering, M.Eng.	14.3301	2012
Information Security and Assurance, M.S.	11.1003	2003
Information Systems, M.S.	11.0401	1982
Operations Research, M.S.	14.3501	1982
Software Engineering, M.S.	14.0903	1989
Statistical Science, M.S.	27.0501	1989
Systems Engineering, M.S.	14.2701	1984
Telecommunications, M.S.	11.0901	2000
<b>DOCTORAL DEGREES:</b>		
<b>College of Education and Human Development</b>		
Education, Ph.D.	13.0101	1980
<b>College of Health and Human Services</b>		
Nursing, Ph.D.	51.3801	1993
Nursing Practice, D.N.P.	51.3818	2010
Rehabilitation Science, Ph.D.	26.1503	2011
<b>College of Humanities and Social Sciences</b>		
Biodefense, Ph.D.	26.0599	2003
Communication, Ph.D.	09.0905	2007
Community College Education, D.A.	13.1299	1990
Criminology, Law, and Society, Ph.D.	43.0103	2005

\*Joint Degree Program.

(Continues on next page)

**TABLE 5.6 Actively Recruited Degree Programs by Level and College, with Classification of Instructional Program (CIP) Codes and Years Initiated, Academic Year 2013–14 (Cont'd)**

<b>Degrees</b>	<b>CIP Code</b>	<b>Year Initiated</b>
<b>College of Humanities and Social Sciences (Cont'd)</b>		
Cultural Studies, Ph.D.	24.0103	1994
Economics, Ph.D.	45.0601	1982
History, Ph.D.	54.0101	2000
Linguistics, Ph.D.	16.0102	2009
Political Science, Ph.D.	45.1001	2006
Psychology, Ph.D.	42.0101	1984
Sociology, Ph.D.	45.1101	2008
Writing and Rhetoric, Ph.D.	23.1304	2013
<b>College of Science</b>		
Bioinformatics and Computational Biology, Ph.D.	26.1101	2002
Biosciences, Ph.D.	30.0101	2002
Chemistry and Biochemistry, Ph.D.	26.0202	2009
Climate Dynamics, Ph.D.	40.0401	2003
Computational Sciences and Informatics, Ph.D.	30.0801	1992
Earth Systems and Geoinformation Sciences, Ph.D.	40.0601	2005
Environmental Science and Public Policy, Ph.D.	03.0104	1982
Mathematics, Ph.D.	27.0101	2005
Neuroscience, Ph.D.	26.1501	2004
Physics, Ph.D.	40.0801	2008
<b>College of Visual and Performing Arts</b>		
Musical Arts, D.M.A.	50.0999	2009
Music Education, Ph.D.	13.1312	2009
<b>School for Conflict Analysis and Resolution</b>		
Conflict Analysis and Resolution, Ph.D.	30.0501	1988
<b>Krasnow Institute for Advanced Study</b>		
Computational Social Science, Ph.D.	30.1501	2005
<b>School of Public Policy</b>		
Public Policy, Ph.D.	44.0501	1991
<b>Volgenau School of Engineering</b>		
Civil and Infrastructure Engineering, Ph.D.	14.0801	2009
Computer Science, Ph.D.	11.0101	1999
Electrical and Computer Engineering, Ph.D.	14.1001	2000
Information Technology, Engr.	14.0901	2002
Information Technology, Ph.D.	11.0103	1985
Statistical Science, Ph.D.	27.0502	2007
Systems Engineering and Operations Research, Ph.D.	14.2701	2009
<b>FIRST PROFESSIONAL DEGREE:</b>		
<b>School of Law</b>		
Law, J.D.	22.0101	1979

**TOTAL UNIVERSITY DEGREE PROGRAMS OFFERED**

Bachelor's:	76
Master's:	85
Doctoral:	38
First Professional:	1
<b>Total:</b>	<b>200</b>

## INSTITUTIONAL ACCREDITATION

George Mason University is accredited by the Commission on Colleges of the Southern Association of Colleges and Schools to award bachelor's, master's, and doctoral degrees. Contact the Commission on Colleges at 1866 Southern Lane, Decatur, Georgia 30033-4097 or call 404-679-4500 for questions about the accreditation of George Mason University.

## SPECIALIZED ACCREDITATION

---

### COLLEGE OF EDUCATION AND HUMAN DEVELOPMENT

(Unit accreditation at the Initial and Advanced Levels)  
*National Council for Accreditation of Teacher Education (NCATE)*

#### School of Recreation, Health and Tourism

(B.S. in Athletic Training)  
*Commission on Accreditation of Athletic Training Education (CAATE)*

(B.S. in Health, Fitness, and Recreation Resources, Concentrations in Parks and Outdoor Recreation and Therapeutic Recreation)

*Council on Accreditation of Parks, Recreation, Tourism and Related Professions (COAPRT)*

### COLLEGE OF HEALTH AND HUMAN SERVICES

#### School of Nursing

(All programs)  
*Commission on Collegiate Nursing Education (CCNE)*

#### Department of Social Work

(B.S.W. and M.S.W. in Social Work)  
*Council on Social Work Education (CSWE)*

#### Department of Health Administration and Policy

(B.S. in Health Administration)  
*Association of University Programs in Health Administration (M.S. Health Systems Management, executive management concentration)*

*Commission of Healthcare Management Education (CAHME)*

#### Department of Global and Community Health

(Master of Public Health)  
*Council on Education for Public Health (CEPH)*

### COLLEGE OF HUMANITIES AND SOCIAL SCIENCES

#### Department of History and Art History

(B.A. and M.A. in Art History)  
*National Association of Schools of Art and Design (NASAD)*

#### Department of Public and International Affairs

(Master of Public Administration)  
*National Association of Schools of Public Affairs and Administration (NASPAA)*

#### Department of Psychology

(Ph.D. in Psychology with a Concentration in Clinical Psychology)  
*American Psychological Association (APA)*  
(M.A. in Psychology, Concentration in School Psychology)  
*Approved by the National Association of School Psychologists (NASP)*

### COLLEGE OF SCIENCE

#### Department of Chemistry

(B.S. in Chemistry)  
*Approved by the American Chemical Society (ACS)*

#### Department of Geography and Geoinformation Science

(Graduate Certificate in Geospatial Intelligence)  
*Approved by the US Geospatial Intelligence Foundation (USGIF)*

### COLLEGE OF VISUAL AND PERFORMING ARTS

#### School of Music

(B.A./B.M. in Music; M.M. in Music; D.M.A. in Musical Arts; Ph.D. in Music Education)  
*National Association of Schools of Music (NASM)*

#### School of Art

(B.A./B.F.A. in Art & Visual Technology; M.A./M.F.A. in

Art & Visual Technology; M.A.T. in Art Education; M.A. in Graphic Design)

*National Association of Schools of Art and Design (NASAD)*

(M.A.T. in Art Education)

*National Council for Accreditation of Teacher Education (NCATE)*

#### Other Academic Units

(B.F.A. in Computer Game Design; B.A. in Film and Video Studies; M.A. in Arts Management)

*National Association of Schools of Art and Design (NASAD)*

### SCHOOL OF LAW

*American Bar Association (ABA)*

### SCHOOL OF MANAGEMENT

(All programs in Business; all programs in Accounting)  
*AACSB International – The Association to Advance Collegiate Schools of Business*

### VOLGENAU SCHOOL OF ENGINEERING

(B.S. in Applied Information Technology;

B.S. in Computer Science)

*Computing Accreditation Commission of ABET*

(B.S. in Bioengineering; B.S. in Civil and Infrastructure

Engineering; B.S. in Computer Engineering; B.S. in

Electrical Engineering; B.S. in Systems Engineering)

*Engineering Accreditation Commission of ABET*

## **STATE APPROVALS**

---

### **COLLEGE OF EDUCATION AND HUMAN DEVELOPMENT**

(Teacher Education programs)  
Virginia Department of Education

### **COLLEGE OF HEALTH AND HUMAN SERVICES**

**School of Nursing**  
Virginia Board of Nursing

## **CONSORTIUM OF UNIVERSITIES OF THE WASHINGTON METROPOLITAN AREA**

---

George Mason University is a member of the Consortium of Universities of the Washington Metropolitan area. Fully participating members are American University, The Catholic University of America, Corcoran College of Art and Design, Gallaudet University, George Mason University, The George Washington University, Georgetown University, Howard University, Marymount University, National Defense Intelligence College, National Defense University, Trinity Washington University, University of the District of Columbia, and University of Maryland - College Park.

Eligible students have the opportunity to benefit from the academic offerings of member institutions and to enroll for courses at any of the participating institutions. Further information can be found at [www.consortium.org](http://www.consortium.org).